

Lateral Spring Plungers with spring steel sheet

22160.0206



Product Description

The lateral spring plunger with spring steel sheet guarantees a simple and secure positioning of workpieces or components at stops or fixture plates, e.g. in board mounting or before the clamping process in the jig and fixture construction. The double-sided version allows for serial clamping. Below h_1 is resulting a down hold effect.

Material

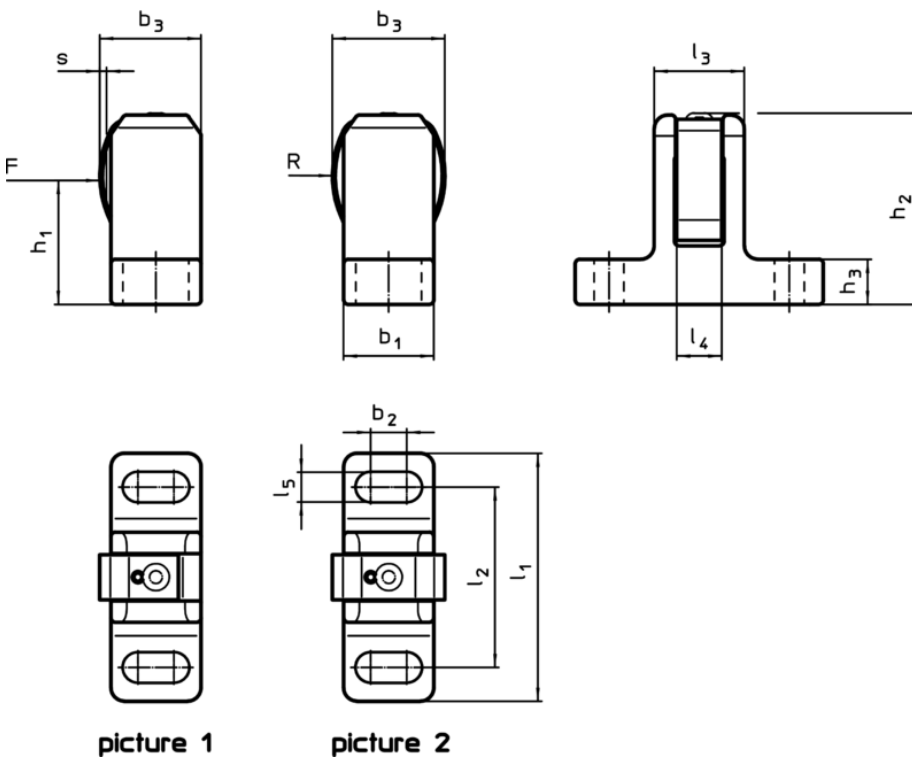
Spring element

- Stainless steel

Body

- Steel, black

Drawing



Order information

Dimensions													Stroke	For screw	Spring load	max.		Art. No.
l_1	l_2	l_3	l_4	l_5	b_1	b_2	b_3	h_1	h_2	h_3	R	s		F	max. ¹⁾	°C	g	
± 1					$\pm 0,5$		~		± 1			[mm]	[mm]	[N]		[°C]	[g]	
[mm]																		
double-sided – picture 2																		
55	40	20	10	6,6	20	8	25	28,5	42,5	10	22,5	1,5	M6	55	250	135		22160.0206

¹⁾ statistical average value

Application example

