

Lateral Plungers· smooth, without seal, with female thread

22150.1040



Product Description

To be used for positioning and applying pressure, e.g. during painting and sandblasting.

Material

Body

- Aluminium

Threaded washer

- Steel, blackened

Spring

- Stainless steel

Assembly

Formula for calculating the center distance for the mounting hole:

$$l_0 = z/2 + w + x,$$

l_0 = center distance,

y = workpiece height,

w = workpiece length,

x = stroke,

z = stop diameter

Calculation dimension x for workpieces: $x = d_2/2 - s$

Installation by pressing in.

Characteristic

Light spring load = spring from stainless steel

More information

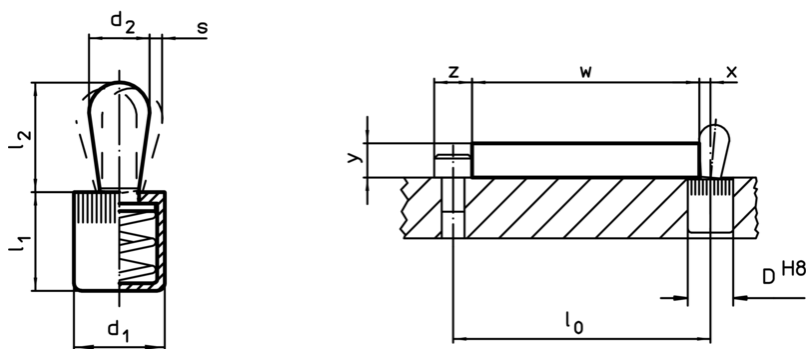
Notes

Individual set screws can be screwed in the plate with threaded hole.

Further products

- Eccentric Mounting Bushings, for lateral plungers, smooth

Drawing





Order information

Dimensions		Spring load F max. ¹⁾	d ₃	Dimensions				Stroke s	Location hole D H8	🌡️ max. [°C]	🏋️ [g]	Art. No.
d ₁	d ₂			l ₁	l ₂	l ₃	l ₄					
[mm]		[N]		[mm]				[mm]	[mm]	[°C]	[g]	
light spring load												
16	M6	100	10,2	17	11,5	7,5	1,7	3,2	16	250	9,4	22150.1040

¹⁾ statistical average value

Accessories

	Dimensions d ₁ [mm]	 [g]	Art. No.
assembly tool			
	16	105	22150.0833