

## Spring Plungers with moveable ball and internal hexagon 22031.0252



### Product Description

Spring plungers can be used for locating or for applying pressure, as a detent or for ejection. The running of the ball minimises wear on the counterpart, this also results in a positive locking behaviour depending on the counterpart. Plastic balls offer electric insulation.

#### Material

##### Body

- Stainless steel 1.4305

##### Bearing

- Plastic

##### Ball

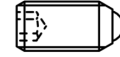
- Stainless steel, hardened

##### Spring

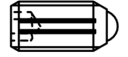
- Stainless steel

#### Characteristic

Reinforced spring load: marked with two lines



Standard spring load



Heavy spring load

#### More information

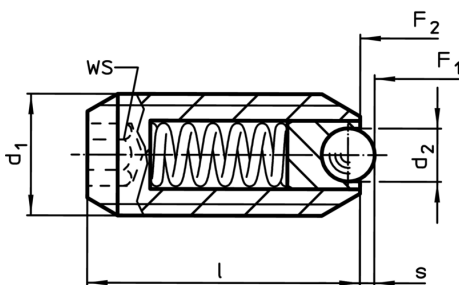
#### Notes

Special types on request.  
Spring range and forces are precisely tested.

#### References

Thread lock on request, please refer to appendix - Technical Data - Calculation of indexing resistance, see details at the start of the section.

### Drawing



### Order information

Dimensions			WS [mm]	Stroke s [mm]	Spring load <sup>1)</sup>		min. max. [°C]	[g]	Art. No.	
d <sub>1</sub>	d <sub>2</sub>	l			F <sub>1</sub>	F <sub>2</sub>				
[mm]					[N]					
stainless steel, heavy spring load										
M12	6,5	26	6	2,3	39,5	77,3	-30	90	15	22031.0252

<sup>1)</sup> statistical average value

Application example

