

## Spring Plungers with moveable ball and internal hexagon 22031.0046



### Product Description

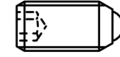
Spring plungers can be used for locating or for applying pressure, as a detent or for ejection. The running of the ball minimises wear on the counterpart, this also results in a positive locking behaviour depending on the counterpart. Plastic balls offer electric insulation.

#### Material

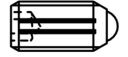
- Body**
- Free cutting steel, blackened
- Bearing**
- Plastic
- Ball**
- Ball-bearing steel, hardened
- Spring**
- Stainless steel

#### Characteristic

Reinforced spring load: marked with two lines



Standard spring load



Heavy spring load

#### More information

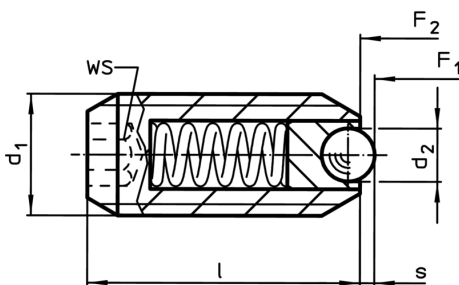
#### Notes

Special types on request.  
Spring range and forces are precisely tested.

#### References

Thread lock on request, please refer to appendix - Technical Data - Calculation of indexing resistance, see details at the start of the section.

### Drawing



### Order information

Dimensions			WS	Stroke s	Spring load <sup>1)</sup>		min.	max.	[g]	Art. No.
d <sub>1</sub>	d <sub>2</sub>	l			F <sub>1</sub>	F <sub>2</sub>				
[mm]			[mm]	[mm]	[N]	[N]	[°C]	[g]		
<b>free cutting steel, heavy spring load</b>										
M6	2,5	15	3	0,7	11	16	-30	90	2,2	22031.0046

<sup>1)</sup> statistical average value

Application example

