

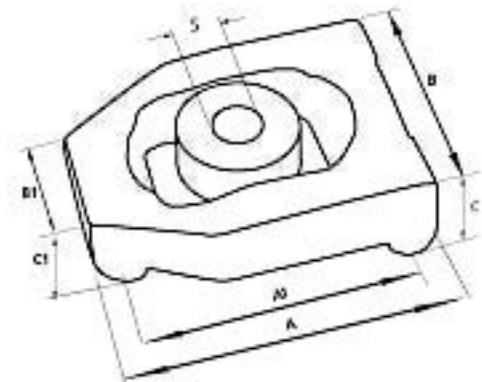
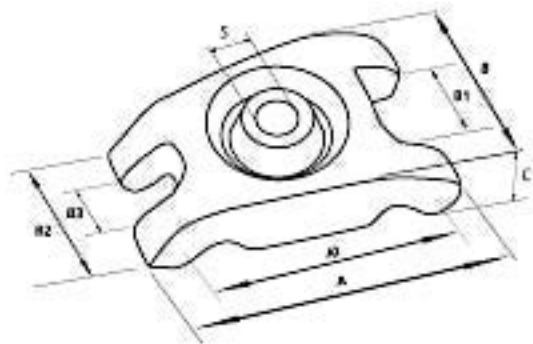
Buttress Clamps

- Holds press tools on all types of power press.
- Clamps work up to 75mm (3") deep to drilling machines and lathe faceplates.
- Constant clamping force ratio between workpiece and table, thanks to self-aligning captive pivot.
- h-shaped head's 4-point contact resists tendency for workpiece to rotate.



1 daN = 1 kgf
1 daN = 2.2 lbf
1 daN = 10 N

	Model No.	Max Safe Working Height mm Inch	Max Fixing Bolt Diameter mm Inch	Clamp Weight kg
Standard Duty  1200 daN	T614-0	45 (1 3/4)	M12 (1/2)	0.6
Medium Duty  1200 daN	T614-1	57 (2 1/4)	M16 (5/8) or M20 (3/4)	2.7
Heavy Duty  1000 daN	T614-2	75 (3)	M24 (1)	4.3



Model No.	Measurements in mm								
	A	A1	B	B1	B2	B3	C	C1	S
Standard Duty T614-0	110	90	66	36	40	20	26	-	13
Medium Duty T614-1	160	134	100	53	65	29	46	-	21
Heavy Duty T614-2	170	148	130	65	-	-	50	40	26