

METRIC FITTING SPACERS

16 mm SERIES

4 - HOLE

GLOBAL STANDARD COMPONENTS



Assembly

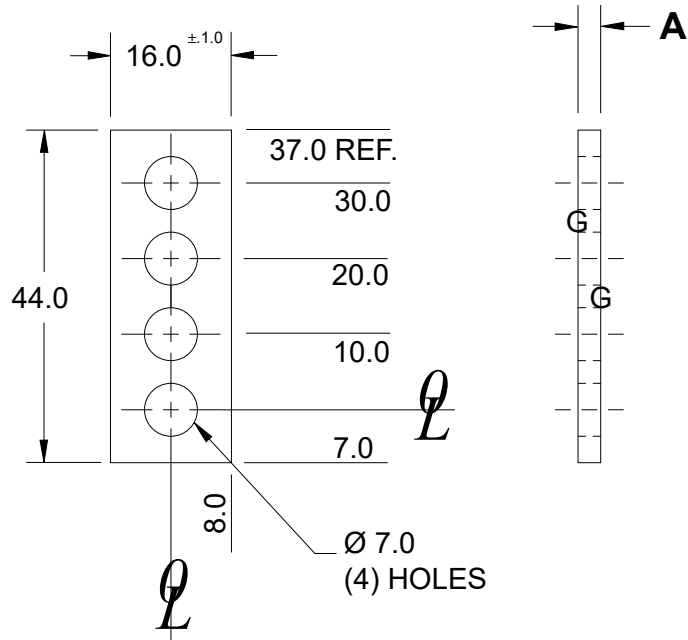
03/19/21

NOTE:

- 1.) ETCH DIM A ON EDGE OF SPACER
- 2.) BLACK OXIDE FINISH
- 3.) SURFACES TO BE FLAT AND PARALLEL TO WITHIN 0.015 mm T.I.R.
- 4.) MATERIAL: STEEL
- 5.) TOLERANCES:
 1 PLACE ± 0.3
 2 PLACE ± 0.03

MATERIAL: S.A.E. 1020 HRS

SEE PAGE B-1.1 FOR GLOBAL MATERIALS CHART



NAAMS CODE	A
ASP830	3.00
ASP832	3.20
ASP834	3.40
ASP836	3.60
ASP838	3.80
ASP840	4.00
ASP842	4.20
ASP844	4.40
ASP846	4.60
ASP848	4.80
ASP850	5.00
ASP852	5.20
ASP854	5.40
ASP856	5.60
ASP858	5.80
ASP860	6.00
ASP862	6.20
ASP864	6.40
ASP866	6.60
ASP868	6.80
ASP870	7.00