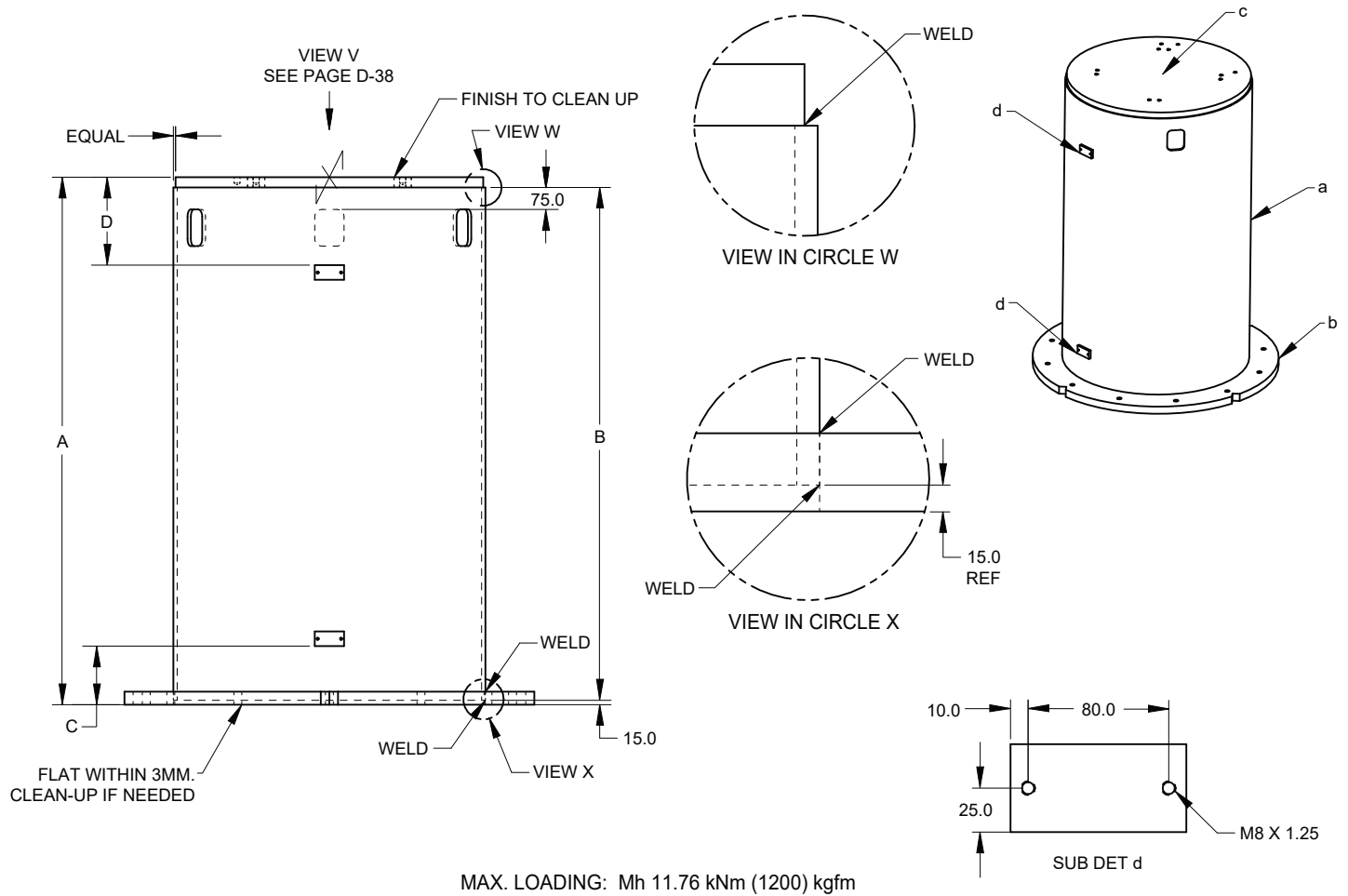


ROBOT RISER M900iA 260L/350



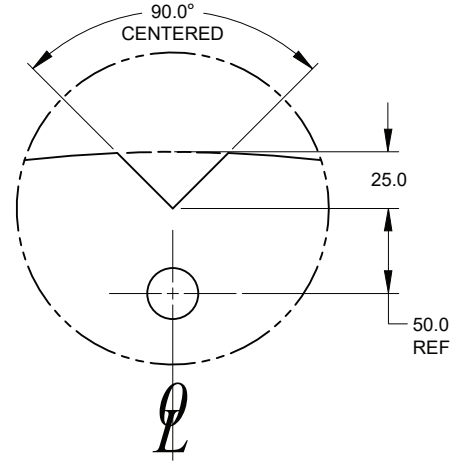
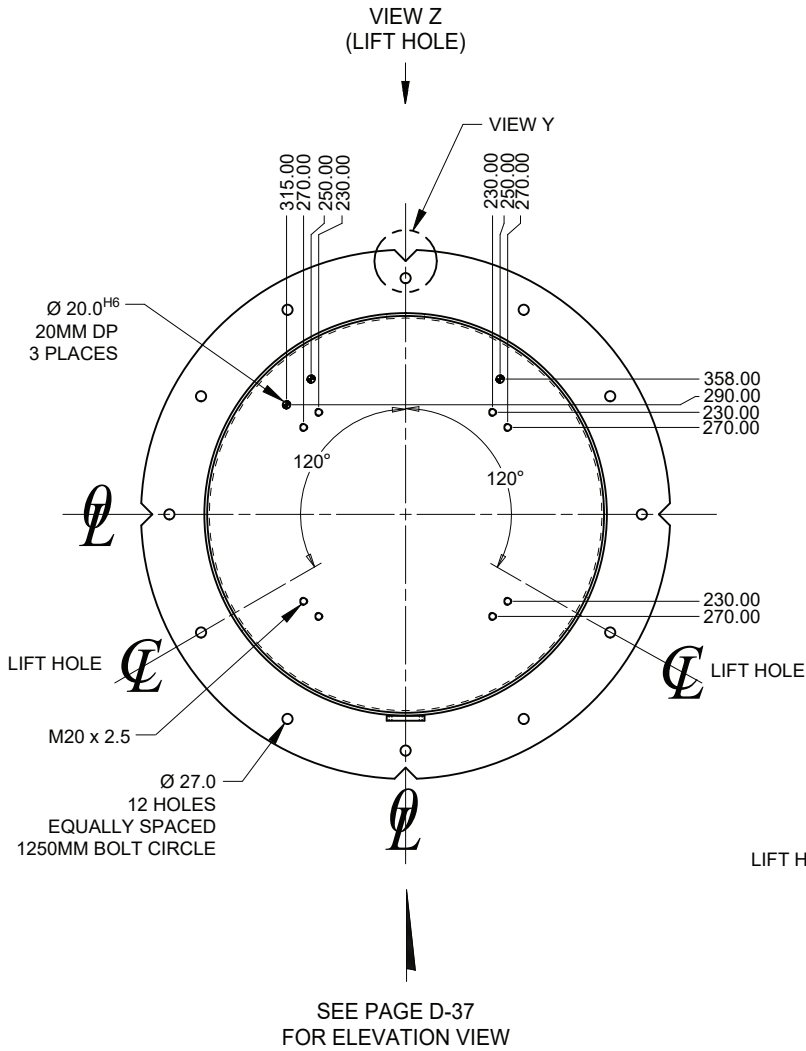
NAAMS CODE	A ±5.0	B	C	D
ARR920	300	250.0	N/A	N/A
ARR930	600	550.0	300MM	N/A
ARR940	900	850.0	450MM	N/A
ARR950	1200	1150.0	200MM	300MM
ARR960	1500	1450.0	200MM	300MM
ARR970	1800	1750.0	200MM	300MM

SEE DRAWING ON NEXT PAGE

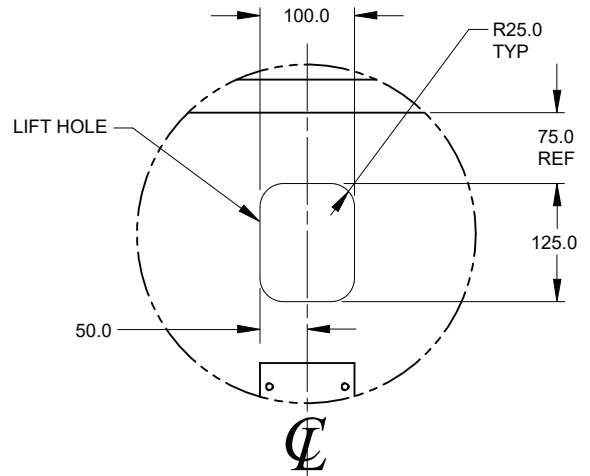
INCH STOCK:

- (a) 1 ~ 1065MM DIA X 1/2" W/T x B - ASTM A - 36
- (b) 1 ~ 1 3/4" X 1400MM DIA - ASTM A - 36
- (c) 1 ~ 1 3/4" X 1050MM DIA - ASTM A - 36 MADE FROM HOLE IN SUB DET "b"
- (d) 1 or 2 ~ 1/2" X 2" X 100MM - ASTM A - 36 SEE CHART

ROBOT RISER M900iA 260L/350



VIEW IN CIRCLE Y
NOTCH IN LINE WITH O-LINE
4 PLACES AS SHOWN



VIEW Z
ROTATED 180°
3 PLACES AS SHOWN

VIEW V
SEE DRAWING ON PRECEDING PAGE