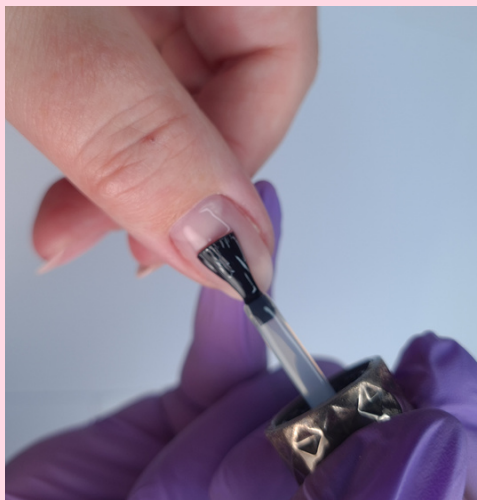


LUXE
—GEL—
PROFESSIONAL

APPLICATION
GUIDE

STRUCTURE BASE | GEL POLISH | BUILDER GEL

GEL POLISH



NAIL PREP

- Sanitise your own and your customer's hands.
- Use a cuticle pusher to push back the cuticles.
- Trim away excess cuticle with cuticle nippers.
- File nails into desired shape using a 180 grit file.
- Gently buff nails using a 100/180 grit buffer to remove any shine from the nail plate.
- Dehydrate and cleanse the nail plate using our Luxe Gel Cleanser & Luxe Gel lint free wipes.

BASE COAT

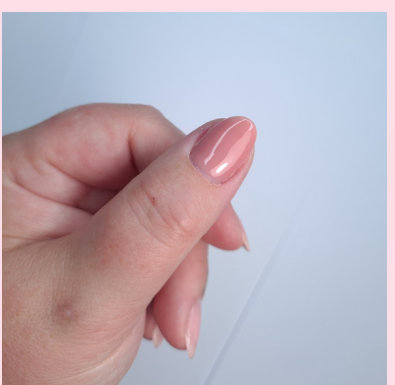
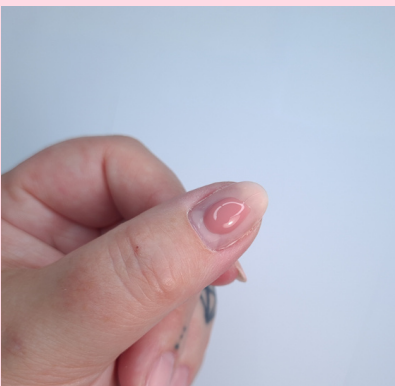
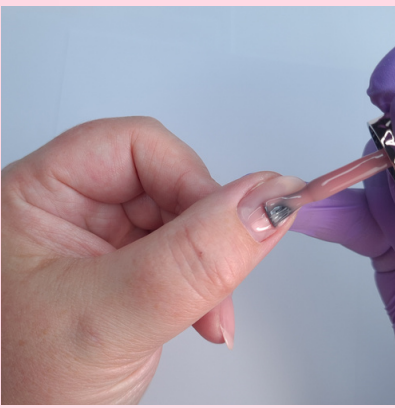
- Apply a thin and precise layer of Luxe Gel 2in1 Base Coat or Clear Structure Base Coat.
- Seal the free edge.
- Cure for 60s Luxe Gel smart LED lamp which is specifically designed for Luxe Gel products or 99 seconds if using low heat mode.
- If the customer experiences a 'heat spike', remove the nails from the lamp and cure outside the lamp and repeat the above step. Be sure all layers are correctly cured.

COLOUR AND FINISH

- Apply a thin coat of any Luxe Gel colour making sure to seal the free edge.
- Cure using our Luxe Gel smart LED lamp for 60 seconds or 99s low heat mode.
- Apply a second even coat of colour, avoid flooding cuticles and use a liner brush if needed.
- Seal the free edge cure for 60s in Luxe Gel LED lamp.
- Apply Luxe Gel Non- Wipe Extra Shine Top Coat or Velvet Matte Top Coat and seal the free edge.
- Cure 60s in Luxe Gel Smart LED lamp.
- Apply Luxe Gel cuticle oil.

STRUCTURE BASE

Our medium viscosity Structure Base can be added as a strengthening layer before a Gel Polish application, as a natural nail overlay, or to create short to medium length extensions. Structure Base already includes base and primer and is soak-off and refillable.



NAIL PREP

- Sanitise your own and your customer's hands.
- Use a cuticle pusher to push back the cuticles.
- Trim away excess cuticle with cuticle nippers.
- File nails into desired shape using a 180 grit file.
- Gently buff nails using a 100/180 grit buffer to remove any shine from the nail plate.
- Dehydrate and cleanse the nail plate using our Luxe Gel Cleanser & Luxe Gel lint free wipes.

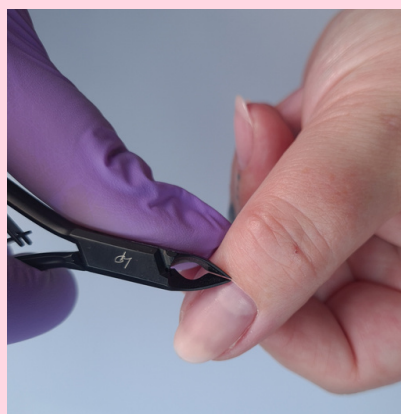
APPLICATION

- Apply thin but precise coat of your chosen Structure Base Shade to the natural nail, avoid skin use our Liner brush if needed to get closer to the cuticle.
- Cure for 60s in our Luxe Gel Smart LED Lamp or 99s if using low heat mode.
- Apply second layer using a medium bead of structure base, spreading side to side and dragging away from the cuticle area. Avoid thick build-up around the free edge and the cuticle area & seal the free edge.
- Build and cure one nail at a time, turn the hand over to help create apex if necessary.
- Cure for 60s using Luxe Gel Smart LED lamp OR 99s low heat mode.

REFINE & FINISH

- Cure all nails for a further 60s.
- Wipe with Luxe Gel Cleanser and Lint Free Pads
- If refinement is needed use a 180/240 grit buffer.
- Remove any dust with a duster brush.
- Apply you Luxe Gel Extra Shine TopCoat
- Cure for 60s in Luxe Gel LED Smart Lamp or alternatively apply your colour of choice followed by top coat.
- Apply Luxe Gel cuticle oil.

BUILDER GEL



NAIL PREP

- Sanitise your own and your customer's hands.
- Use a cuticle pusher to push back the cuticles.
- Trim away excess cuticle with cuticle nippers.
- File nails into desired shape using a 180 grit file.
- Gently buff nails using a 100/180 grit buffer to remove any shine from the nail plate.
- Dehydrate and cleanse the nail plate using our Luxe Gel Cleanser & Luxe Gel lint free wipes.

TIP APPLICATION

- Stick on Luxe Gel clear tips using our Luxe Gel nail glue.
- Press down firmly to ensure there are no air bubbles as this will cause lifting.
- Cut, file and buff tips into shape using a 100/180 grit File and 180/240 grit Buffer.

APPLICATION

- Apply a thin layer of Clear Structure Base and seal the free edge.
- Cure using the Luxe Gel Lamp on 60s Smart Mode or Low Heat Mode (99 seconds),
- Apply a medium bead of Builder gel, spreading side to side and dragging away from the cuticle area. Avoid thick build-up around the free edge and the cuticle area.
- seal the free edge.
- Build and cure one nail at a time, turn the hand over to help create apex if necessary.
- If needed apply another layer of builder following the above steps and cure.



REFINE & FINISH

- Remove tacky layer with Luxe Gel Cleanser & Lint Free Pads.
- Use 100/180 grit file to shape the nails as desired.
- Use 180/240 grit buffer to create smooth even surface.
- Apply any Luxe Gel colour following the gel polish application steps above.
- Finish with Luxe Gel Non-wipe Extra Shine Top Coat
- Cure for 60s in Luxe Gel Smart Led Lamp and apply cuticle oil.