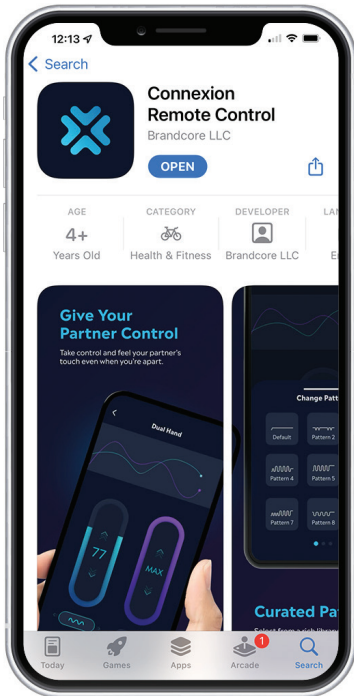


# LOVE ((❤️)) DISTANCE HOW TO GUIDE



## CONNEXION

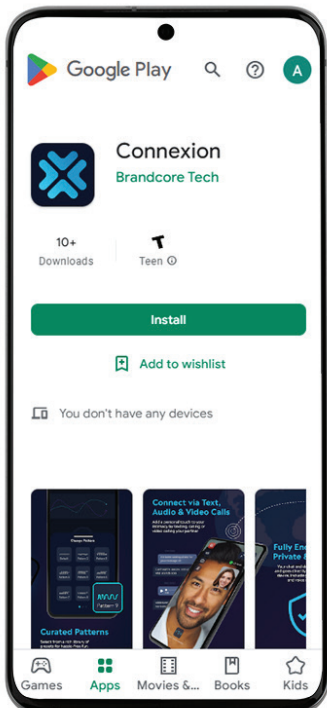
The Love Distance Collection uses a brand new app called Connexion, available on both the Apple App Store and the Google Play Store.



### download on Apple device

1. Open the App Store from your compatible Apple device
2. Search “Connexion Remote Control”
3. Press GET and follow the on-screen instructions to install

*\* The Connexion app requires iOS 12.4 or later on the iPhone, iPad or iPod Touch.*



### download on Android device

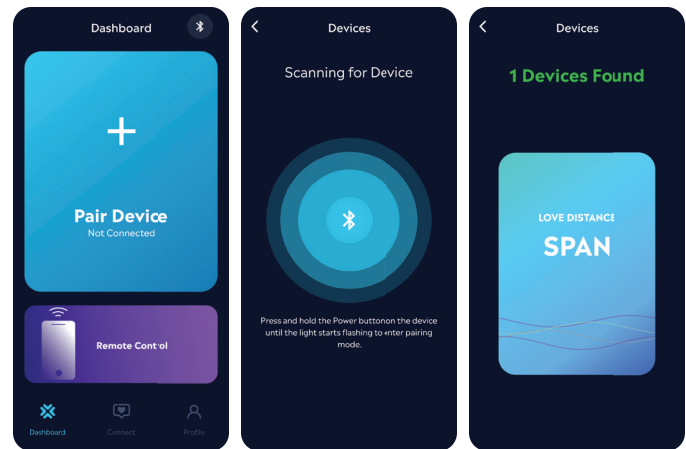
1. Open the Google Play Store from your compatible Android device
2. Search “Connexion”
3. Press INSTALL and follow the on-screen instructions to install

# LOVE ((❤️)) DISTANCE HOW TO GUIDE



## app control (solo) when you want to use the Connexion app by yourself

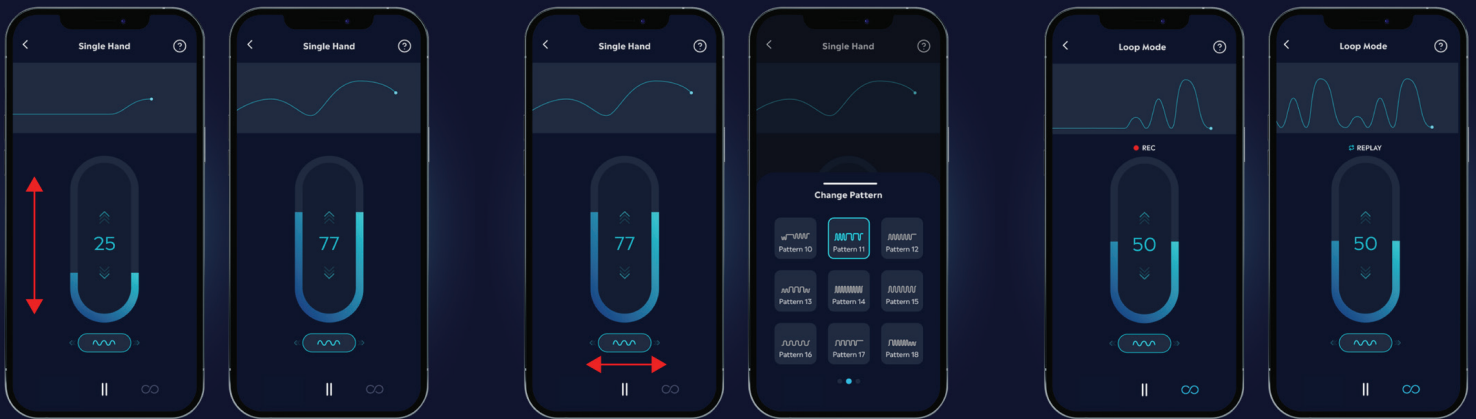
1. Download the Connexion app by searching for “Connexion Remote Control” or “Connexion” in your device’s app store, or by visiting [www.thecx.app](http://www.thecx.app).
2. Turn the Bluetooth setting on your device to **ON** or **DISCOVERABLE**. If you do not do this, you will be prompted to do so within the app.
3. Open the app to get to your account dashboard. From this screen, you can set up your first toy, view your profile, connect with your partner’s device, and more.
4. To connect your toy for the first time, press the **PAIR DEVICE** button.
5. Once on the next screen, your toy is ready to be paired. Turn on your Love Distance toy by pressing and holding the power button. Once on, the LED will flash red and blue, indicating it is in standby/pairing mode.
6. Once your toy is found, you will see a confirmation that it is ready to be paired.
7. Press the name of the toy to start playing. The item will vibrate quickly to indicate it has been paired with the app successfully. The app will then display the controls screen.



Use slider to control your toy’s vibration strength

Swipe or tap to change vibration patterns

Tap to enter Loop mode for hands free pleasure



Do not attempt to pair the Love Distance item from the your device’s bluetooth settings screen. The item must be paired from within the Connexion app itself.

ADDITIONAL INSTRUCTIONS CAN BE FOUND ONLINE AT [WWW.THECX.APP](http://WWW.THECX.APP)

# LOVE ((❤️)) DISTANCE HOW TO GUIDE

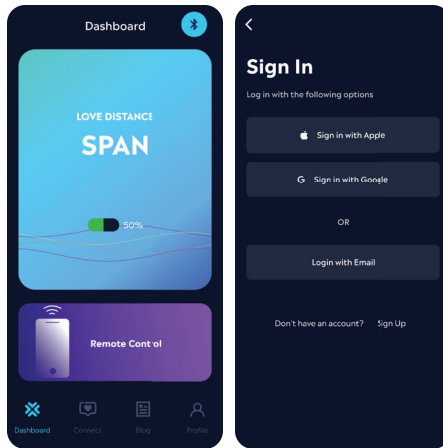


## app control (partner) when you want to use the Connexion app with a partner

1. To use your Love Distance toy with a partner, the person who has the toy in their possession must activate and pair the toy with their own device first, as outlined on the previous page. Once done, please continue to step 2.

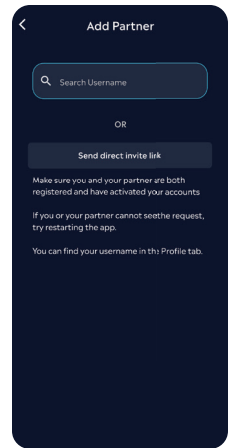
2. Both partners must create accounts within the Connexion app before connecting with each other.

3. Press the **PROFILE** button on the bottom of the app, then follow the in-app instructions to create an account. After signup, you may receive an email asking you to confirm your email address. Please do so before proceeding.



4. Once your account is active, press the **CONNECT** button on the bottom of the app to connect with your partner.

5. You can add them by searching for their username or by sending them a direct link via text, email or other means.

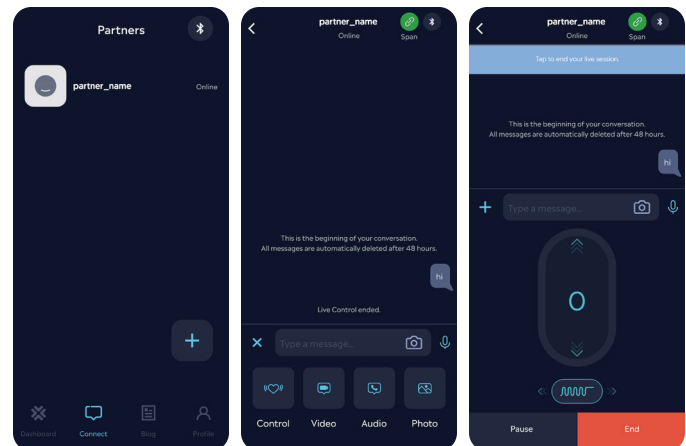


6. After your partner is added, connected and approved, they will show in your partners list. Press your partner's name to connect with them.

7. Once connected with your partner, you can send messages, photos, videos, audio clips and control their toy by pressing the **+** button at the bottom of the app.

8. To control their toy, press the **CONTROL** button at the bottom of the app. The toy control screen will appear.

9. To end your session, simply press the red **END** button at the bottom.



Do not attempt to pair the Love Distance item from the your device's bluetooth settings screen. The item must be paired from within the Connexion app itself.

ADDITIONAL INSTRUCTIONS CAN BE FOUND ONLINE AT [WWW.THECX.APP](http://WWW.THECX.APP)

# LOVE ((♥)) DISTANCE HOW TO GUIDE



**manual control** all Love Distance items can be operated without the app

1. Turn on your item by pressing and holding the power button for 2-3 seconds.
2. Once on, the LED will flash red and blue, indicating it is in standby/pairing mode.
3. Press the power button again to bypass the standby/pairing mode and to start using the item manually.
4. Keep pressing the power button to cycle through the available functions and speeds. There are 20 modes total.
5. To turn off your item, press and hold the power button for 2-3 seconds.



ADDITIONAL INSTRUCTIONS CAN BE FOUND ONLINE AT [WWW.THECX.APP](http://WWW.THECX.APP)

# LOVE ((❤️)) DISTANCE HOW TO GUIDE



## The Climax of Hands-Free Pleasure



### Give Your Partner Control

Don't lose that intimate spark. Take control and feel your partner's touch even when you're apart.

### Text, Talk & Transmit

Enjoy a personal touch to your intimacy by texting, calling or video calling your partner.

### Play Your Way

Your settings determine how you play. Use one hand for basic controls, two hands for ultimate stimulation or no hands for frills-free thrills!



Each Love Distance item comes with a limited one-year warranty. Visit [www.lovedistance.com/support](http://www.lovedistance.com/support) for more information.