

WHERE SCIENCE
MEETS LOVE®



Welcome to

ASSISI
LOOP
LOUNGE™

WARNING:
Electronics inside!
Do not fold or roll

Targeting what matters most,
Healthier, happier pets

 **Incubate**
Animal Health
Looking after innovation

 **ASSISI**
ANIMAL
HEALTH

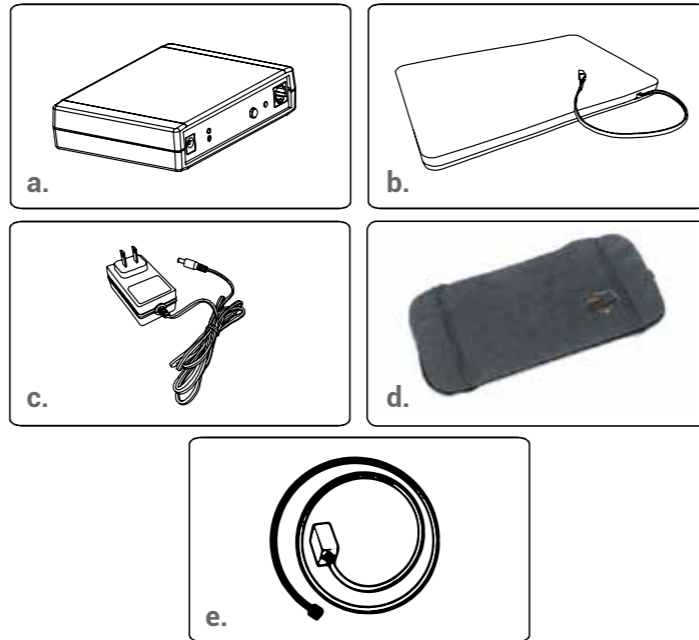


Congratulations on your purchase of the Assisi Loop Lounge™, a device for soothing joints and other body structures.

Your pets will find their Loop Lounge™ to be a place of rest and relaxation. They will also find comfort as Assisi's patented tPEMF™ technology helps with stiffness and supports health.

Before using your assisi loop lounge.

1. Confirm that you have all the necessary components:
 - a. Controller box
 - b. tPEMF pad with wire tail
 - c. A 110V Charge Cord with multi-country wall outlet adaptors
 - d. BuddyRest® performance cover
 - e. Coupler
 - f. Extension cord
2. Charge the battery.
3. To extend the wire tail from your loop lounge pad to your controller box, use the optional coupler and extension cord.
4. Connect the end of the wire coming from the loop lounge pad into one end of the coupler.
5. Connect one end of the extension cord into the other end of the coupler.
6. Connect the remaining end of the extension cord into the controller box.



How to activate the loop lounge.

Press the POWER button on the controller box once. After 15-minute use, the Loop Lounge will automatically turn itself off.

Upon activation, the ACTIVITY light will blink blue. If the ACTIVITY light blinks red, check the connections between the controller box and the pad to ensure that there is a tight connection.

To use for fewer than 15 minutes, press and hold down the POWER button to turn the device off.



Please contact your veterinarian if you have any questions

For more information,
0330 1743194
info@incubateanimalhealth.com
incubateanimalhealth.com

How often to use the loop lounge.

Follow the instructions of your veterinarian regarding how many times to use the loop lounge each day on your pet. Many veterinarians will suggest that you start with 2 to 4 15-minute sessions per day but this could vary between individuals.

- Always use the loop lounge in accordance with instructions from your veterinarian.
- The loop lounge can be beneficial in assisting recovery following trauma or surgery. Follow the instructions of your veterinarian for frequency of use. Expect to use the loop lounge 3-4 times a day for the first week and then taper down over the following week until its use is no longer required.
- The loop lounge can help soothe joints and other body structures and aid with stiffness. Follow instructions of your veterinarian for frequency of use. Expect to use the loop lounge 3-4 times a day for up to 10 days or more, depending on the individual, and then reduce sessions to maintain comfort. Always refer to your veterinarian if you have questions regarding frequency of use.

The Assisi Loop helps maintain health and support recovery. It is designed to be used in a protocol as per recommendation from your veterinarian, following a thorough assessment of your pet.

How soon will I see results?

Depending on your pet and their need for using the loop lounge you may see a noticeable positive change in your pet after the first few sessions. Other indications for use, such as stiffness, may take up to 2 weeks before a change is noted. It is important to continue sessions with the loop lounge as recommended by your veterinarian.



Caution.

- Avoid using the Loop Lounge near large metal objects (metal crates, stainless steel tables, etc.) as doing so may reduce the beneficial effects of its use. **
- There are no user serviceable parts inside Loop Lounge components. OPENING THE CONTROLLER BOX may damage delicate electronics and may affect replacement policy.
- Do not immerse in water - the Loop Lounge is not waterproof.
- Equipment NOT SUITABLE FOR USE IN THE PRESENCE OF FLAMMABLE ANAESTHETIC MIXTURE WITH AIR or WITH OXYGEN or NITROUS OXIDE or OXYGEN ENRICHED ATMOSPHERES.
- The Assisi Loop Lounge SHOULD NOT BE USED on patients who have ANY implanted system that may contain an electrical lead, such as a pacemaker.

** This model of the Assisi Loop Lounge has been designed for use with certain Sleepypod® pet carriers. Should you use this Loop Lounge model as a stand-alone device, or in a different pet bed or carrier, these should contain no metal components (e.g. door, frame, or floor) that could disrupt the patented Loop signal and diminish product efficacy. If in doubt, please call Incubate Animal Health Customer Service.



Cleaning Instructions.

Remove Loop Lounge components from the cover liner. Once removed clean the cover liner following their instructions.

- Loop Lounge components are not waterproof. Do not immerse.
- Carefully wash the affected surface of the pad with a soft brush dampened with soap and water to remove solid particulates and odours. Then clean with a soft cloth dampened with 70% Isopropyl alcohol.
- Clean with power off. Wait 15 minutes after cleaning before operating the unit.



Battery Care.

- Your battery will last longer if you unplug the charge cord from the device and/or the wall outlet when not using the device. Periodically operate the device unplugged to allow the battery to partially discharge before recharging.
- If the battery icon SERVICE light appears, this is an indication that the battery is near the end of its useful life. Call Incubate Animal Health for instructions. Anticipated battery life is 4 years or 6,000 uses.
- The Loop Lounge will not operate at or below temperature of -17°C.
- When the Loop Lounge is not in use, store in non-humid environment between -1°C and 40°C.
- Long-term exposure to heat and cold will compromise battery life and may result in battery failure



Additional Considerations.



Air Travel Advisory - As with many other electronic devices (e.g. your mobile phone or your laptop) the Loop Lounge may be subject to screening rules for carry-on items. You may have to remove the tPEMF Pad Controller and place it in a tray and send it through the scanner.



The Assisi Loop Lounge is an electronic device. The tPEMF Pad Controller used in the Assisi Loop Lounge contains Nickel Metal Hydride (Ni-MH) batteries. Please consult and follow government regulations for the proper disposal protocol.



Contact:
0330 1743194
info@incubateanimalhealth.com
incubateanimalhealth.com

