



# TECHNICAL REPORT

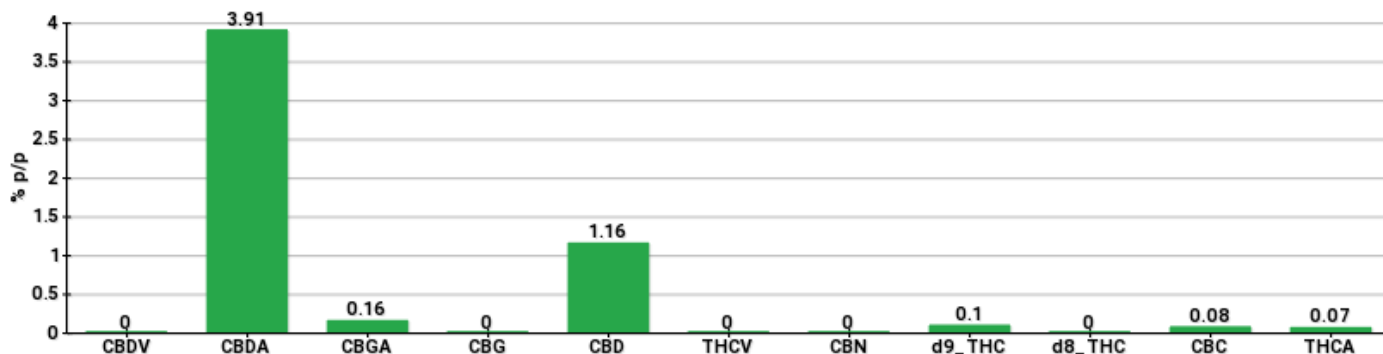


<b>Committente</b>	GARDAJOINT S.r.l.	<b>Etichetta</b>	SWEETDREAMS
<b>Data accettazione</b>	01/01/1970	<b>Tipologia campione</b>	Infiorescenza
<b>Data analisi</b>	14/05/2021	<b>varietà</b>	Kompolti
<b>Codice riferimento interno</b>	SCI7-1037.1	<b>N. Cartellino</b>	18-17050874
<b>Metodica analitica</b>	HPLC - HS - Rev.2	<b>Campionamento</b>	a cura del cliente
<b>Lotto</b>			

**Note**

Parametro	% p/p	Metodo
CBDV	<0.01%	HPLC-UV
CBDA	3.91%	HPLC-UV
CBGA	0.16%	HPLC-UV
CBG	<0.01%	HPLC-UV
CBD	1.16%	HPLC-UV
THCV	<0.01%	HPLC-UV
CBN	<0.01%	HPLC-UV
d9_THC	0.10%	HPLC-UV
d8_THC	<0.01%	HPLC-UV
CBC	0.08%	HPLC-UV
THCA	0.07%	HPLC-UV
<b>CBD TOTALE</b>	<b>4.59%</b>	<b>CALCOLATO</b>
<b>CBG TOTALE</b>	<b>0.14%</b>	<b>CALCOLATO</b>
<b>THC TOTALE</b>	<b>0.16%</b>	<b>CALCOLATO</b>

CAMPIONE ANALIZZATO: Kompolti(5000.00gr)



Pineto

14/05/2021