



# ATLAS

SWISS-MADE AUTOMATIC

**POWERED BY YOU**

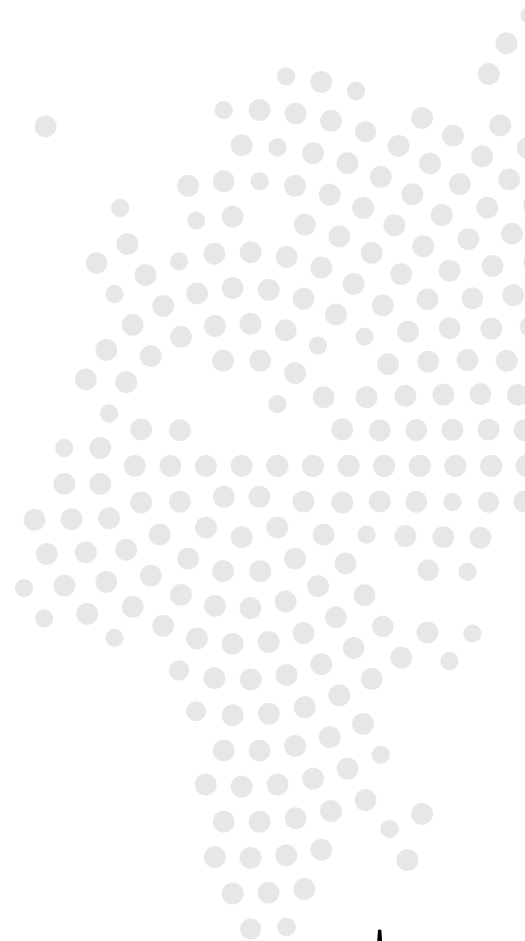
OWNERS HANDBOOK

# NITE WATCHES

## PROVEN THROUGH PASSION

In 2003, our founder Roger Green pioneered the UK's first privately owned British watch brand to feature tritium illumination. Recognising this highly specialised technology as a key benefit for outdoor activities he set about creating a collection of classically designed watches made with the finest materials and Swiss-made quartz and mechanical movements.

This passion to produce truly outstanding watches owned by a community of independent-minded customers lives on today.





NITE

9

AUTOMATIC  
ATLAS

100m

## INTRODUCING **THE ATLAS**

Celebrating our 20 years of designing and manufacturing classic-inspired watches, the Atlas stands on the shoulders of the MX10, our classic field watch once supplied as standard issue to UK Special Forces. This evolution in design is everything you expect and need from a NITE Watch: toughness, timekeeping, and Tritium (our world-class illumination technology).

The brushed steel case brings the style while the streamlined design and flush wrist positioning provides the comfort, but this is unmistakably part of our heritage: a bold, robust, utility field watch which will match you all the way for performance under pressure.

Designed in the UK, it is made in Switzerland by Roventa Henex SA, which has a long tradition of developing and manufacturing watches for some of the world's most famous watch brands. More than just a geographical location, Swiss-Made means a promise of quality and reliability.



BRITISH DESIGN

SWISS MADE

ATL-01

MEZZANO

## FEATURES

### **SWISS MADE SELLITA AUTOMATIC MOVEMENT**

Made in Switzerland, by our trusted partner, Roventa Henex SA, the Sellita movement used is extremely well regarded for the level of accuracy and reliability that it provides.

### **T100 TRITIUM ILLUMINATION**

Our highest rated Tritium illumination. The T100 rated illumination provides a constant glow throughout the night without the need for any external power supply.

### **STAINLESS STEEL CASE**

316L aviation grade stainless steel case. So it can withstand wear and tear, retain its shine, and resist moisture, perspiration, and seawater effects.

### **SAPPHIRE CRYSTAL**

Ultra-scratch resistant and coated with anti-reflective layers, Sapphire crystal is recognised as the premium option across the watch industry and is used throughout the NITE collection.

### **POWER RESERVE**

38 hours when fully wound. Giving watch owners who take their watches off at night the confidence their watch will be accurate and ready.



## TECHNICAL SPECIFICATION

CASE FINISH	BRUSHED STEEL
STRAP TYPE	LEATHER POLYMER HYBRID STRAP
CRYSTAL	SAPPHIRE WITH TRIPLE ANTI-REFLECTIVE COATING
TRITIUM	T100 TRITIUM
MOVEMENT	SWISS MADE SELLITA SW200-1
CROWN TYPE	PUSH CROWN
DIAL DIAMETER	34MM
CASE DIAMETER	40MM
CASE DEPTH	11MM
LUG WIDTH	20MM
WEIGHT	82G
WATER RESISTANCE	100M
POWER RESERVE	38 HOURS WHEN FULLY WOUND



# SET UP INSTRUCTIONS

Your Atlas automatic watch utilises a combination of intricate components working in unison to translate the motion of the wearer into stored energy to power the movement.

## IMPORTANT - SETTING THE TIME & DATE

**Position 1 is for winding the power.**

Wind the crown in a clockwise direction to re-power the watch.  
5-10 Full revolutions is plenty.

**Pull the crown out carefully.**

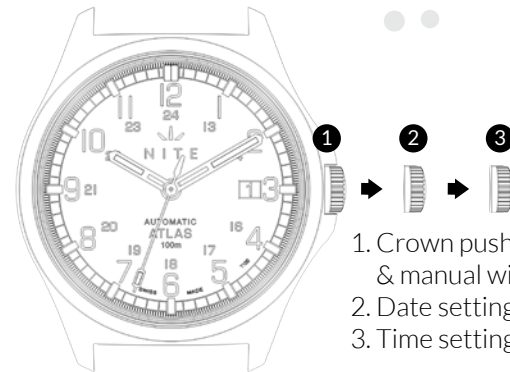
**Position 2 is for setting the date.**

Turn the crown in a clockwise direction to the desired date.  
**Date correction should not be carried out between 20.00hr and 02.00hr** as the watch gearing will already be aligning itself to change the date.

**Position 3 is for setting the time.**

Turn the crown in a clockwise direction to move the time forward and anti-clockwise direction to move time back.

The crown should always be pushed in fully against the case after any adjustment.



1. Crown pushed in position & manual winding
2. Date setting
3. Time setting



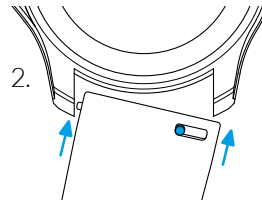
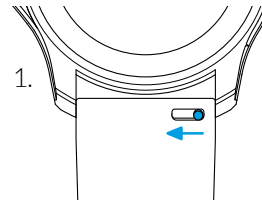
## QUICK RELEASE STRAP

We place as much emphasis on the quality of our straps as we do our watches, using only the finest materials with quick-release pins for ease of removal and instal.

1. To remove the strap locate the quick-release pin and pull inwards to detach.

2. To reattach your strap, pull the pin inwards, align the spring bar so that the left side secures into the lug hole followed by the right, ensuring they both click securely in place on each side.

If you have any queries or need further guidance please get in touch we'll be happy to help.



## **WATER RESISTANCE**

Although your watch has been through vigorous static pressure testing, it is worth remembering that there are many variables that can affect the water resistance of your watch. For instance, arm movements during swimming and the sudden impact of diving and water sports will drastically increase the pressure the watch is under.

Wearing your watch in the bath, shower, or sauna can also have an affect as a rapid change in temperature can cause seals to expand or contract in extreme cases, malfunction or create condensation.

For these reasons, the water resistance rating of your watch should only ever be considered a guideline and we strongly recommend they are always adhered to.

## **GUARANTEE, SERVICE & REPAIRS**

Your watch is constructed from the finest components and powered by a Swiss mechanical movement. With the right care and attention, your new timepiece has decades of time keeping ahead of it.

### **5 YEAR WARRANTY**

Covers manufacturing defects, subject to an inspection and assessment of the fault by our service centre.

We guarantee to repair or, where this is not possible, replace the watch as appropriate with the same model or alternative model if a direct replacement is unavailable.

Repair work carried out during the term of the warranty period must be completed by our NITE repair centre in the UK. Failure to adhere to this requirement will invalidate your warranty and repair work will be chargeable.

Tritium is a specialist item and should only be removed by an authorised Watchmaker.

Normal wear and tear, ageing and damage or defects caused by misuse are not covered by the warranty.

### **SERVICE AND REPAIRS**

Our approach to service and repairs is about uncompromised quality and great value for money. The process, led by our expert technicians, won't cost the earth and will have the watch back on your wrist in reasonable time. We recommend you service your watch every three to four years to keep it in peak condition.

#### PLEASE NOTE:

The Guarantee does not cover accidental damage. Any service or repair by a third-party retailer will void your Guarantee.

For more details, please visit [www.nitewatches.com](http://www.nitewatches.com)

## STAY IN TOUCH

We welcome feedback as it helps us improve our offering and reaffirms that our approach to producing quality watches is working.

As the owner of a NITE Watch, if you ever need to get hold of us we'll be here:

+44 (0)1202 487757  
theteam@nitewatches.com

Follow us on social media to keep up with latest news, updates and adventures!

 NiteWatches

 nitewatches



**HQ**

Unit 14 Silver Business Park, Airfield Way, Christchurch, Dorset, BH23 3TA  
United Kingdom

**CUSTOMER SUPPORT**

+44 (0)1202 487757  
theteam@nitewatches.com

**NITEWATCHES.COM**

