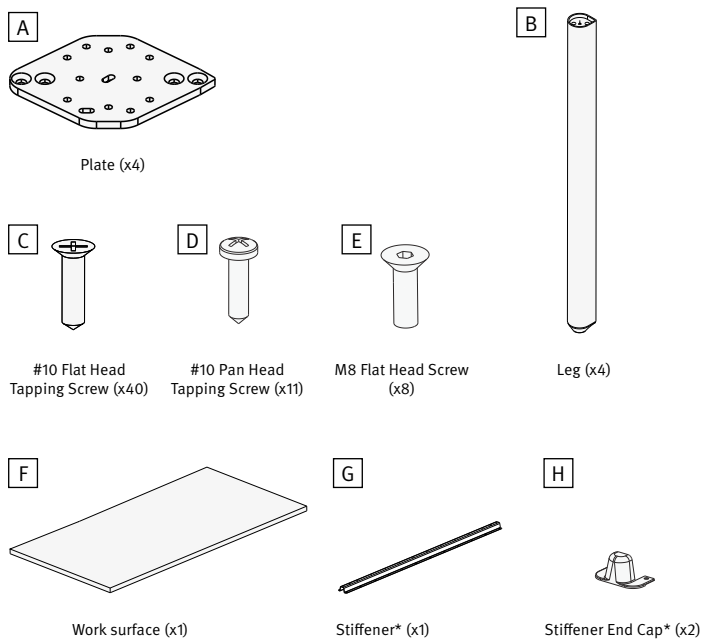
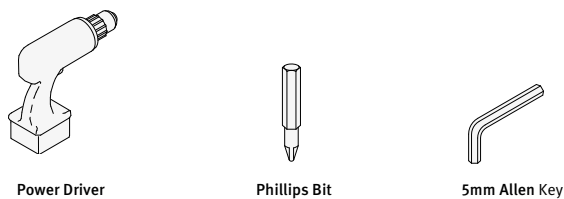


### Parts Included



\*1500 wide table only

### Tools Required



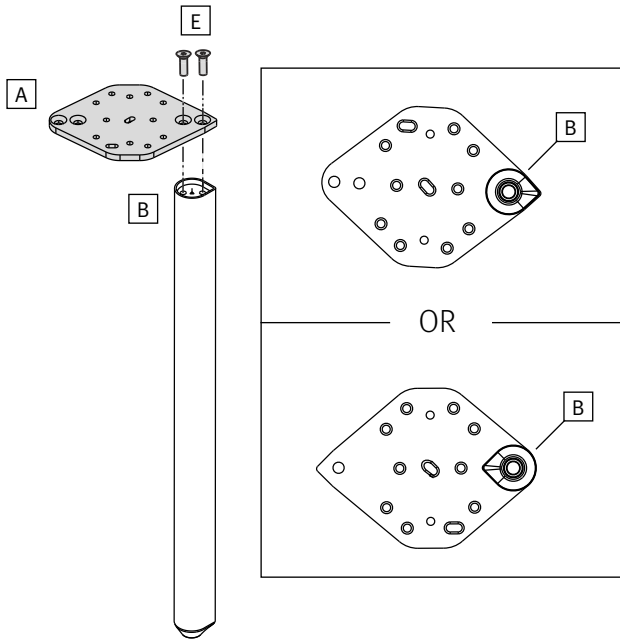
### IMPORTANT!

PLEASE READ THIS GUIDE THOROUGHLY BEFORE BEGINNING INSTALLATION.

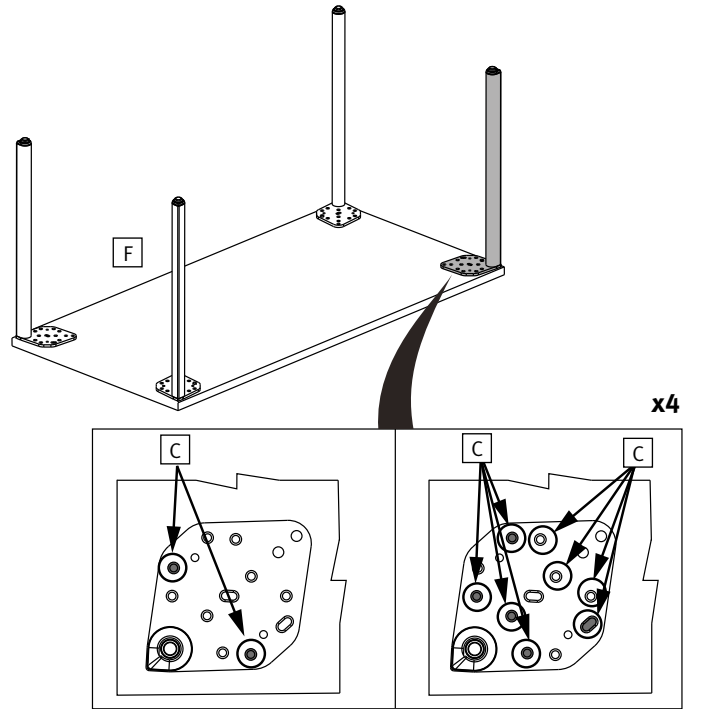
IT IS STRONGLY RECOMMENDED THAT INSTALLATION BE PERFORMED BY AT LEAST 2 ADULTS. FAILURE TO DO SO MAY RESULT IN PRODUCT DAMAGE AND/OR PERSONAL INJURY.

PLEASE SAVE THESE INSTRUCTIONS FOR DISASSEMBLY OR RECONFIGURATION.

1.

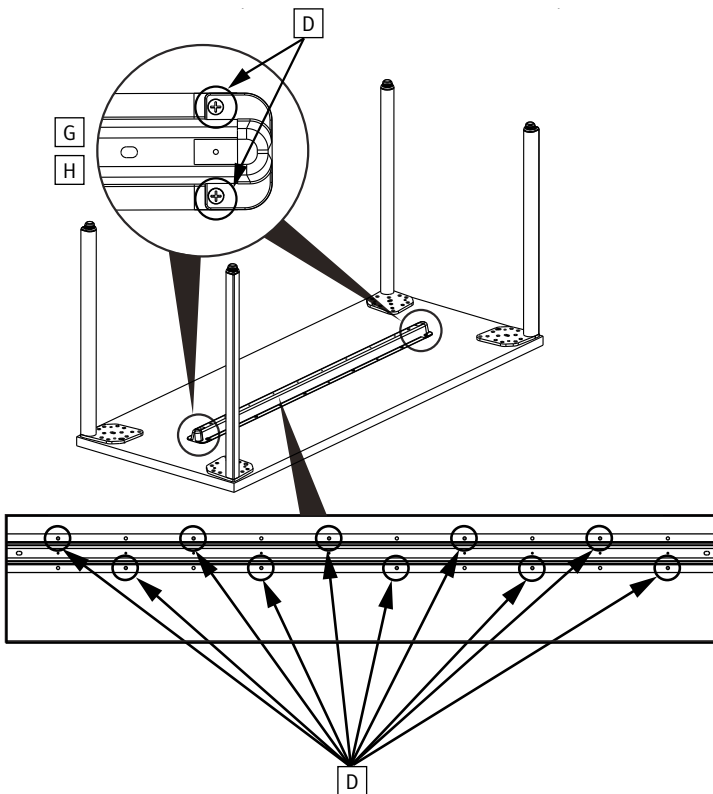


2.



3\*.

\*1500 wide table only



4.

