

FIRMWARE UPDATE

Camera Bundle Firmware

Step 1 | Jumpdrive 2.0

You need a USB 2.0 Jumpdrive to update firmware. Make sure USB:

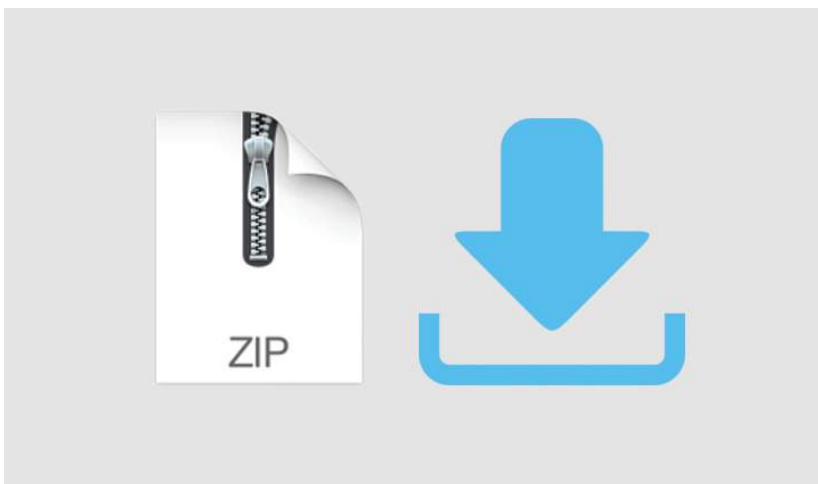
- Has NO files on it.
- Example of recommended USB: **PNY 8GB USB Flash Drive** available from Amazon or B&H Photo.



Step 2 | Zip File

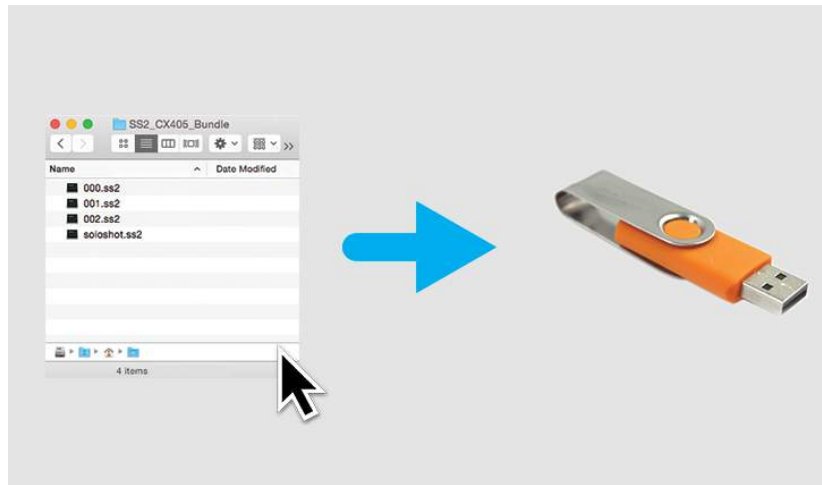
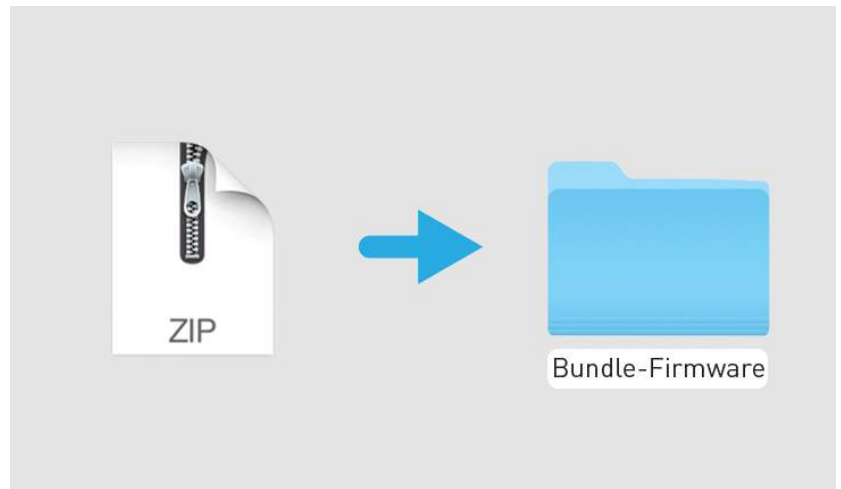
Download the zip file containing firmware for your Bundle here:

- [Sony CX-240 Bundle Firmware](#)
- [Sony CX-405 Bundle Firmware](#)



Step 3 | Unzip

Locate downloaded file and unzip to reveal firmware folder.



Step 4 | Copy Files

Open folder and copy ALL 4 files from the firmware folder DIRECTLY to the USB 2.0 Jumpdrive.

- 000.ss2
- 001.ss2
- 002.ss2
- soloshot.ss2

Important: Do not copy the folder onto your Jumpdrive. Copy only the individual files listed above.

Step 5 | Prepare Base For Update

Power on Base in update mode. Press and hold M button then press power button.

- LED 1 will flash RED/GREEN indicating the Base is ready to be updated.





Step 6 | Prepare Tag For Update

Press and hold (+) button on Tag then press power button.

- Charging LED above power button will flash RED/GREEN indicating the Tag is ready to be updated.

Step 7 | Dock Tag

Hold Tag at 45-deg angle and dock Tag into Accessory Dock on front of Base. Push the Tag toward the Base until it's flush with Base and clicks into place.

Note: Must connect Tag directly to Base to upgrade firmware. Tag will not upgrade when docked to Base through Camera Controller.



Step 8 | Insert Jumpdrive

Insert the USB 2.0 Jumpdrive into the USB Port on the side of your Base. The Base and Tag will automatically update, beginning first with Base and followed automatically by Tag.

Note: SOLOSHOT products will only accept a USB 2.0 Jumpdrive and not a 3.0.

Step 9 | Base Will Update

LEDs will flash RED/GREEN rapidly indicating that Base is updating.



Step 10 | Tag Will Update

LEDs 1-3 on the Tag will flash RED/GREEN indicating that Tag is updating.

Important!

Some jumpdrive 2.0 USB devices cause all 6 LEDs on Base to flash RED after the firmware update is complete for the Base and Tag. Do not be alarmed.

Simply remove the jumpdrive from the side of Base and reinsert it.

Note:

- LEDs 1 and 2 will illuminate as described in Step 11, indicating the update was successful.
- Proceed with the update instructions to update your Camera Controller.





Step 11 | Base & Tag Updated

Base and Tag will restart automatically in default settings when update is complete.

On the Base:

- LED 1 will be blinking.
- LED 2 will be solid.

On the Tag:

- LED 1 will be solid RED.

Note: Color of LEDs are dependent on previous settings saved.

Step 12 | Release Tag

Release Tag from Accessory Dock by sliding the dock button down.
Power down Tag.



Step 13 | Dock Controller

While holding down the update button on top of Camera Controller, dock into Accessory Port on Base at 45-degree angle.

Push the controller flush to the Base until it clicks into place.

Step 14 | Controller Updates

Camera Controller LED will flash RED/GREEN during update.

LED 6 on Base will flash RED/GREEN as Controller updates.



Step 15 | Controller Updated

Camera Controller LED will turn RED when update complete.

On the Base:

- LED 1 will be blinking.
- LED 2 and 3 will be solid.

Step 16 | Release Controller

Slide the dock button down to release Camera Controller.

Remove jumpdrive from side of Base.





Step 17 | Power Off

Power off Base.

Congratulations! Your Base, Tag and Camera Controller are now ALL updated.