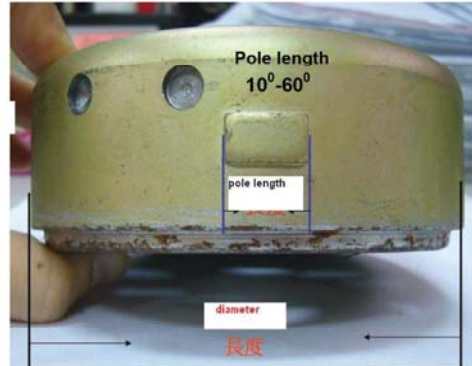
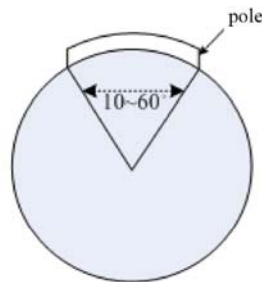




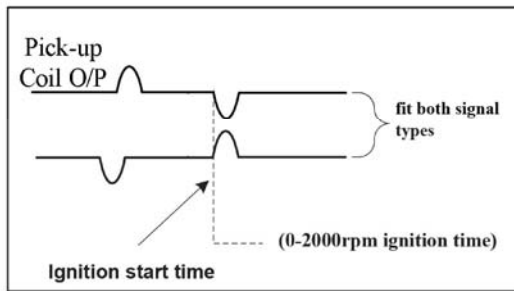
Ignition Timing Adjustable DC CDI & Coil

Specifications :

1. Fits revolution speed 300~15000rpm
2. Applied voltage: 9-16v
3. Operation Temperature: -20 °C ~ +40 °C
4. Fitted ACG : pole length 10°-60°
see picture



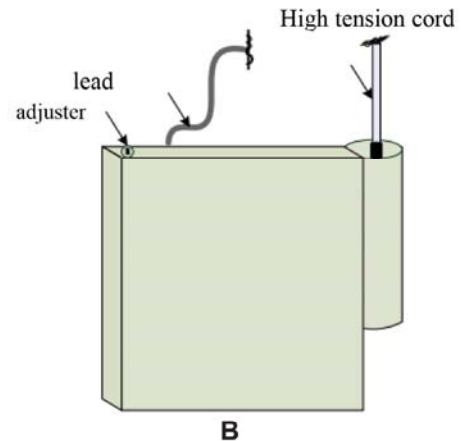
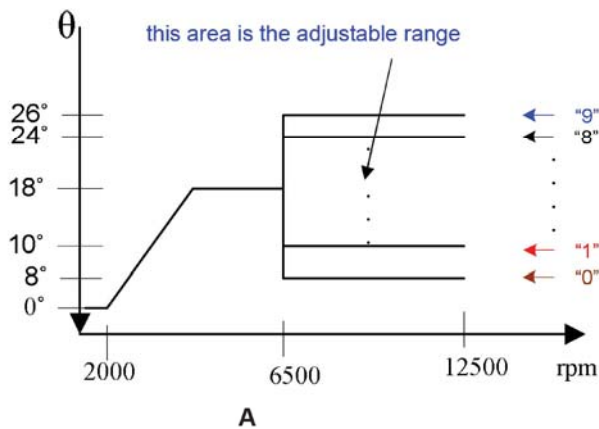
5. Fits trigger coil (pickup coil) signal:



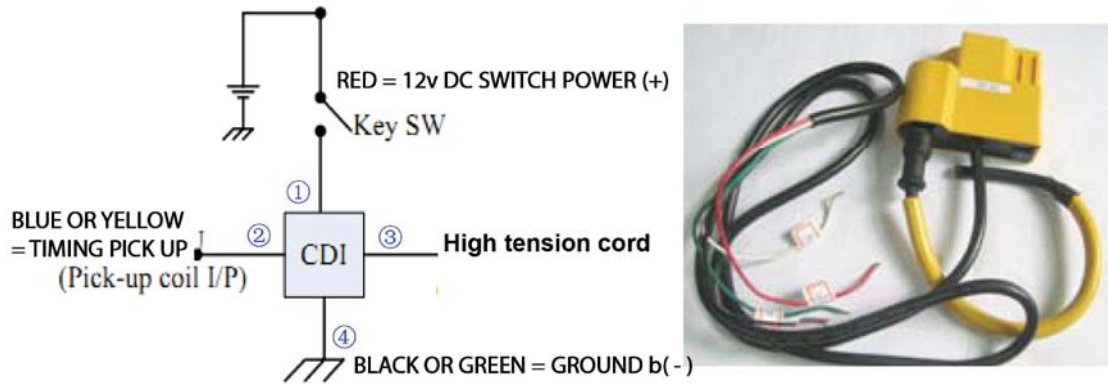
6. Features of setting

A: Ignition timing adjustable by $\pm 10^\circ$

B: Adjustable timing works within 6250-10500rpm see below A .adjuster scale set 0-9 as below
(0-8° 1-10° 1-12°9-26°)



7. Wiring Diagram

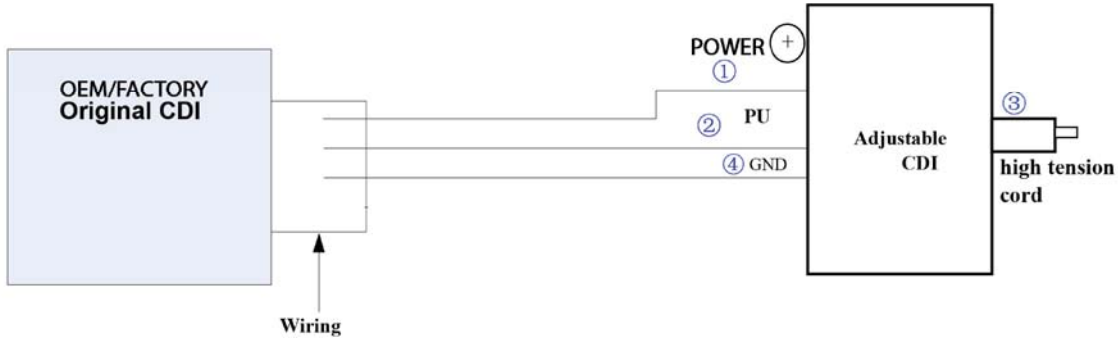


8) Warning and disclaimer:

- 1) Do not use if the voltage is over 16volts DC or Temperature is over 40 degree C (104 degree F)
- 2) This product is a high performance item, incorrect adjustment may cause engine damage.
- 3) Incorrect wiring will damage the product, please wire accordingly.
- 4) Over Revving could take place, please pay attention to your engine RPM limits to avoid engine damage.
- 5) For racing or off-road use ONLY.

9. Combine original CDI connection method

Some Original factory CDI is with multifunctions like controlling other devices such as Headlight relay coil, Stand by Switch etc, to combine our CDI, the connection method as below diagram (if it is just a common original CDI,replace whole CDI directly)



Remarks: apply this model CDI, user have to remove the original ignition coil