

Smartphone connectivity

Music Mix - High Quality Music streaming x 5 devices

Up to 5 Bluetooth® devices can be paired to the head unit at the same time. You can enjoy audio streaming just by switching the devices among your friends.



Dual Phone Connection

While you are connected through Bluetooth, with a touch of a button you can switch between two phones.

Smartphone connectivity



KENWOOD Remote App Compatible

Download the free app "KENWOOD Remote".

You can change audio sources or adjust audio settings like "Time Alignment" or "13-Band EQ" from your smartphone.



Smartphone connectivity

Playable USB Files

Compatible with a broad range of audio file formats such as FLAC and WAV, to MP3, WMA and AAC.

Music Codec	Playable up to
FLAC	~96kHz / ~24bit
WAV	~44.1kHz / ~16bit
MP3	~48kHz / ~320kbps
WMA	~48kHz / ~192kbps
AAC	~48kHz / ~320kbps

13-Band EQ / Digital Time Alignment

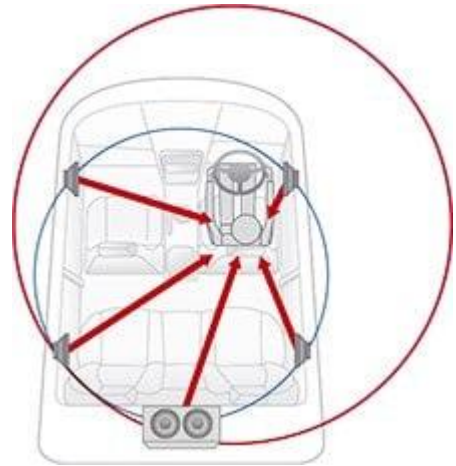
13-Band equalizer and DTA gives optimal tuning enhancements for the listener.

Time Alignment 	13 - Band EQ 	3-way X'over Mode
High Voltage 3.5 V 3 Preouts		

Digital Time Alignment

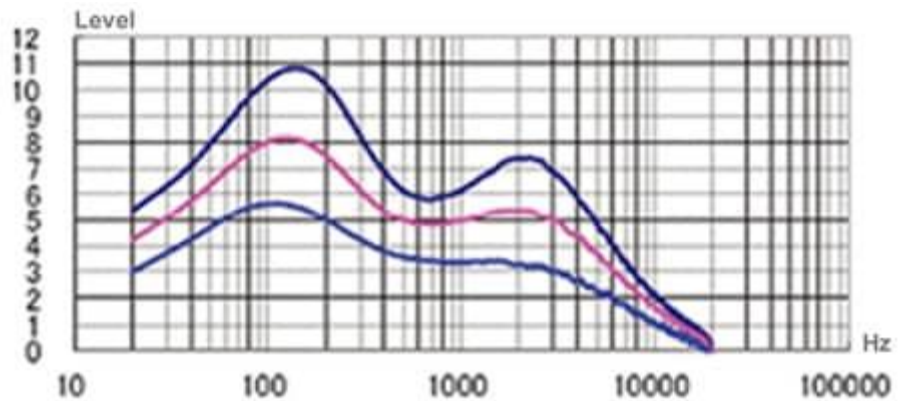
Sound coming from a variety of speakers located within your car are time aligned to arrive at your ear at exactly the same time.

Smartphone connectivity



Drive Equalizer

Drive EQ boosts specific frequencies in the audio signal to compensate the negative impact of road noise.



Front USB and AUX Input Compatible with a Variety of USB-Enabled Devices

Easy front panel connection for your compatible USB-enabled devices. These include Mass Storage Class devices like iPods, smartphones, and USB flash drives. The USB input will allow you to charge and control the music playback of your select devices.



Smartphone connectivity



Multicolor Illumination

Bright variable color LEDs can be adjusted to match any color dash lighting.



Designed for Ease to Use



Direct Bluetooth keys allow you to access quickly to answering to and making a call, and entering Bluetooth Audio source.

Smartphone connectivity

