

User Manual

For LEXUS

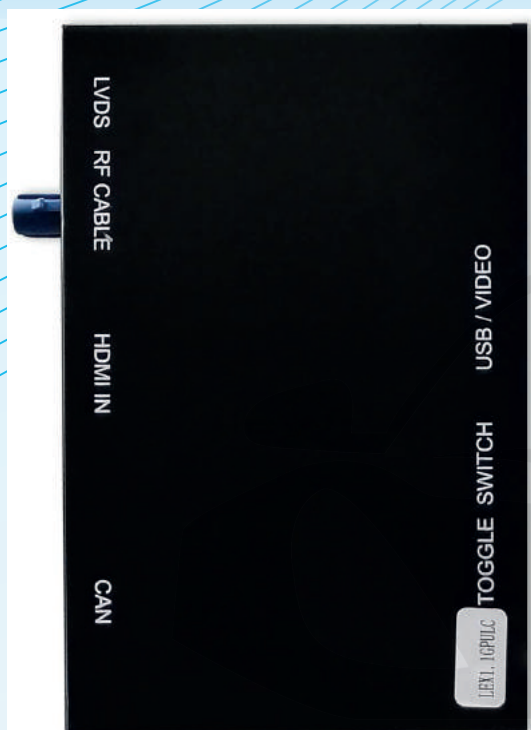


 Apple CarPlay

 Android Auto



Specifications



Panel description

CAN	For power cable connection, CAN data transmission
USB/Video	USB data transmission, and for reverse/front camera connection
HDMI IN	HDMI input, support up to 720P
LVDS	Connect with LVDS cable we provided
RF Cable	Wifi antenna connector
Toggle switch	Refer DIP code setting to set for different screen size

Specification

Input	USB/CVBS signal input
Input Voltage	12-16V DC
Rated Current	2A
Rated Power	24W
Control	Steering wheel control, iDrive control
Material	Housing aluminum

Features

- >Support wireless/ wired Carplay connection
- >Support wireless/ wired Android auto function (some mobile phones)
- >Support wireless Airplay function
- >Support wired Autolink function
- >Compatible with OEM microphone and external microphone
- >Support **EQ** adjustment, Lossless sound quality
- >Support **HDMI** input
- >Support **USB** to play audio file & video, Support firmware upgrade

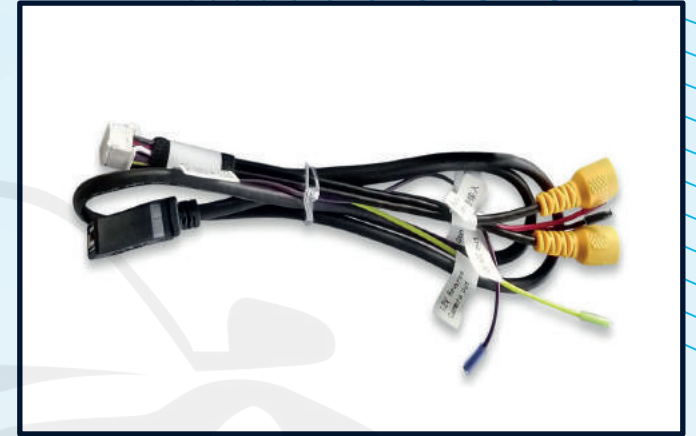
Accessories



LVDS cable



WIFI antenna



AV/USB cable







CAN power cable



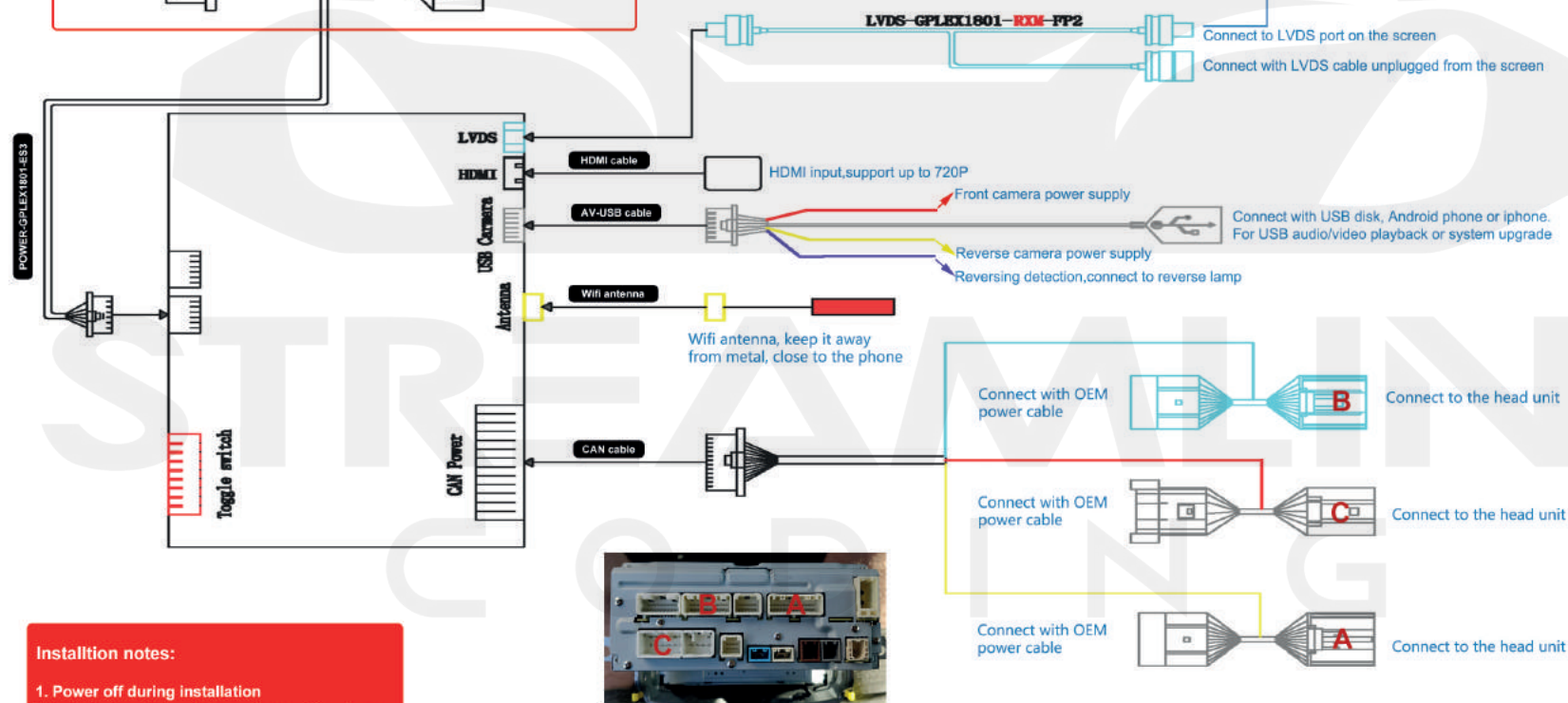
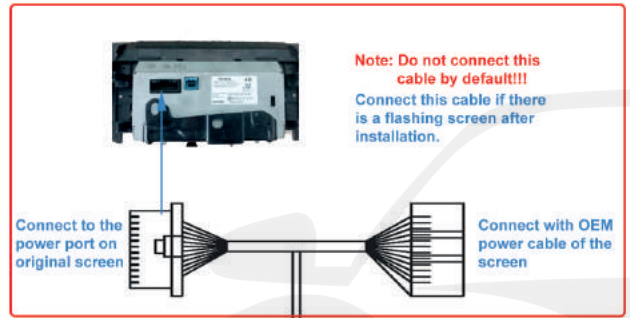
screen power cable

DIP code setting

Control type	Dial the code	The screen size	The picture sample
knob	00000000	7/8 inch	
	00110000	old 7 inch(There is a missing icon or a line in the middle of the screen after using 7/8 inches)	
	00010000	10.3 inch	
Large touchpad	01000000	7/8 inch	
	01100000	12.3 inch	
	01010000	10.3/12.3 inch (new)	
Small touchpad	10001000	7/8 inch	
	10101000	12.3 inch	
	10011000	10.3/12.3 inch (new)	
	10111000	old 7 inch(There is a missing icon or a line in the middle of the screen after using 7/8 inches)	
mouse	01000000	7/8 inch	
	01100000	12.3 inch	
	01010000	10.3/12.3 inch (new)	
	011110000	old 7 inch(There is a missing icon or a line in the middle of the screen after using 7/8 inches)	

Connection Diagram For Knob:

Screen size	DIP code setting
7/8 inch	00000000
7 inch(old model)	00110000
10.3 inch	00010000



Installation notes:

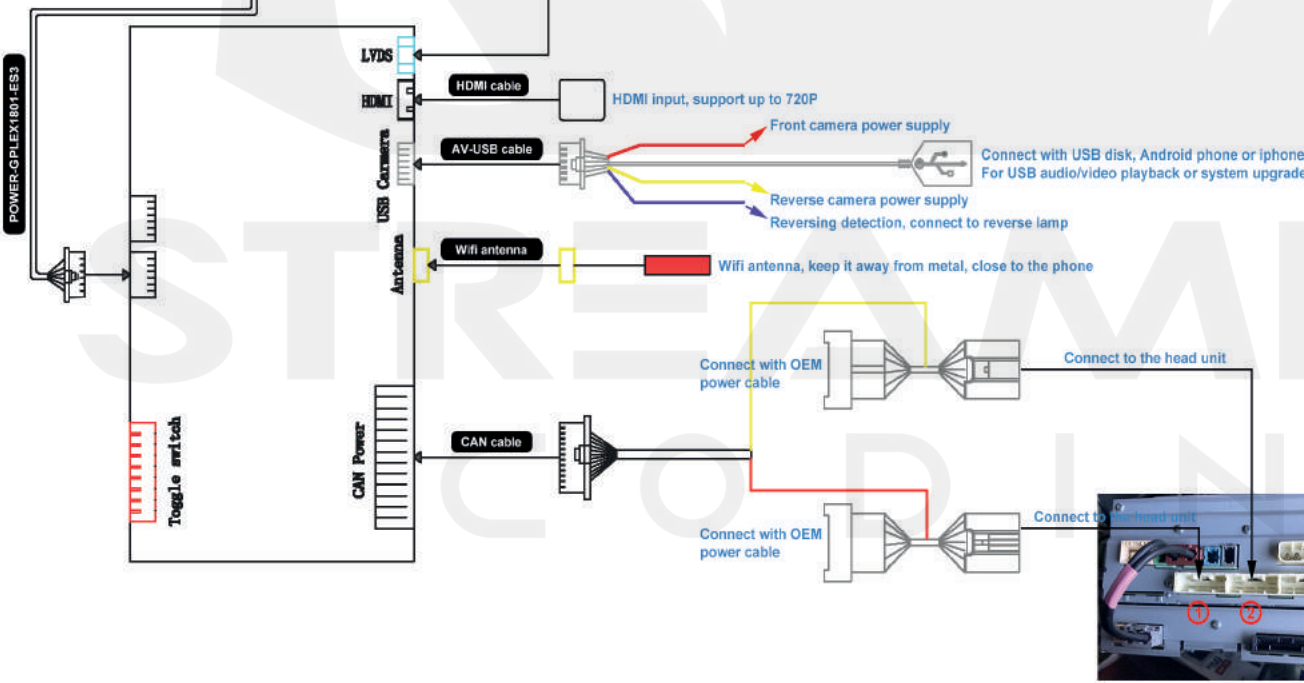
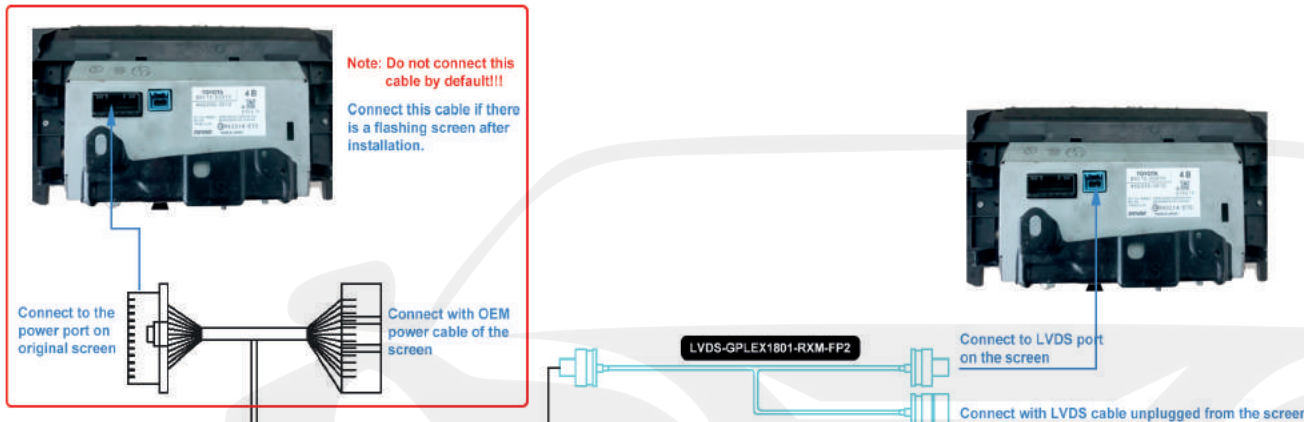
1. Power off during installation
2. Install after all function confirms without error



Connection Diagram For Large Touchpad:

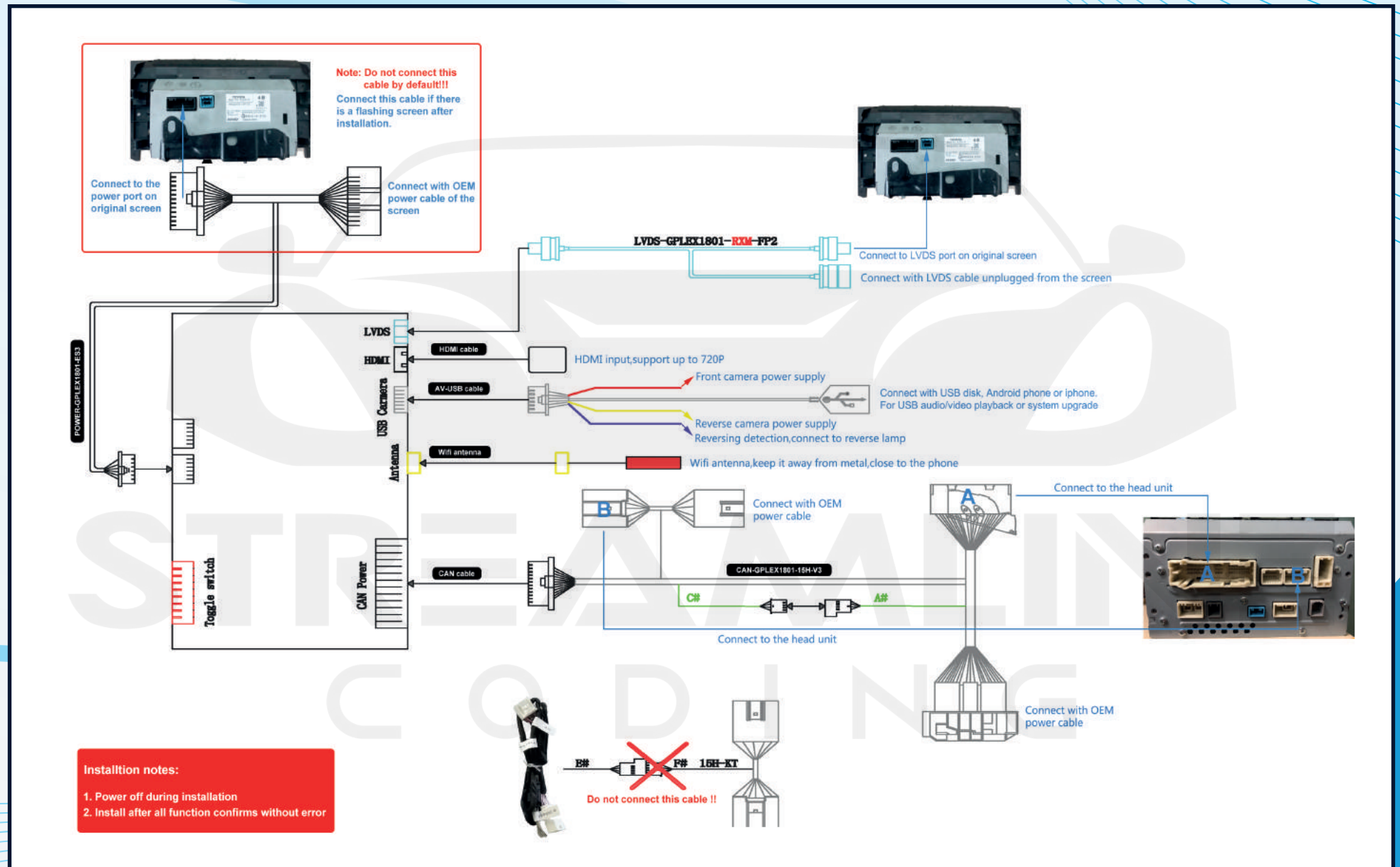
Installation notes:

1. Power off during installation
2. Install after all function confirms without error

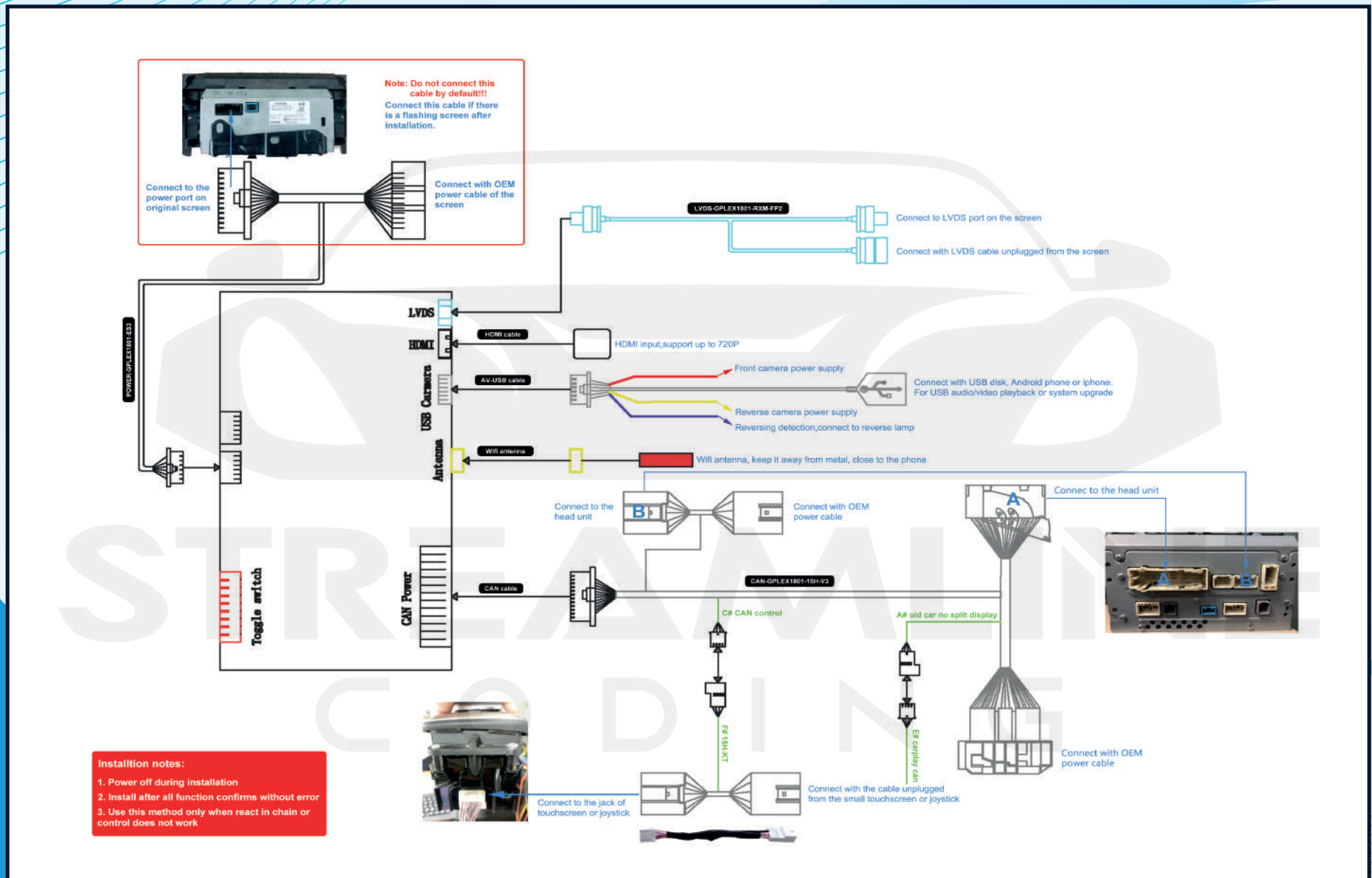


Screen size	DIP code setting
7/8 inch	01000000
12.3 inch	01100000
10.3/12.3 inch (new model)	01010000

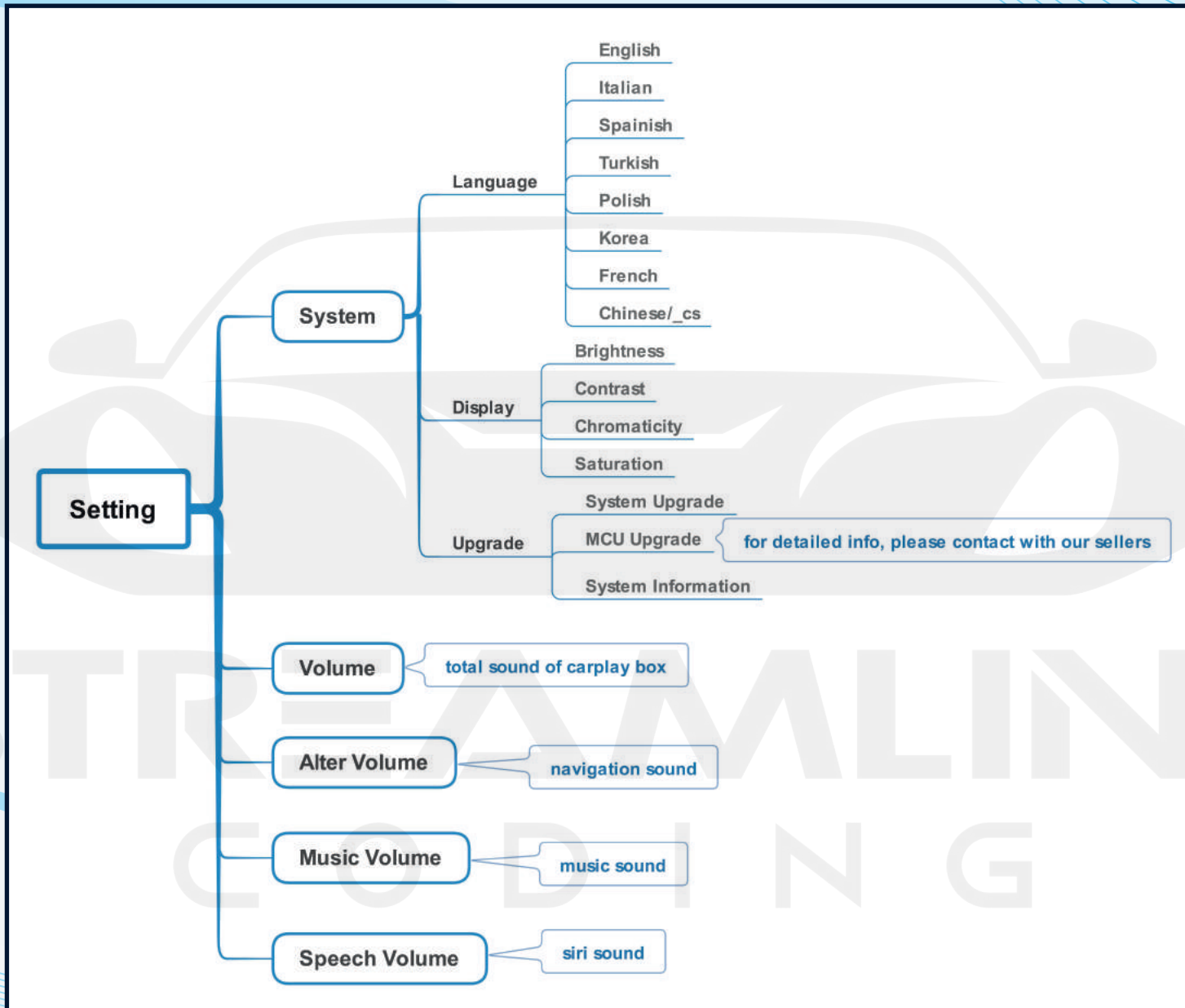
Connection Diagram For Small touchpad or Mouse (method 1):

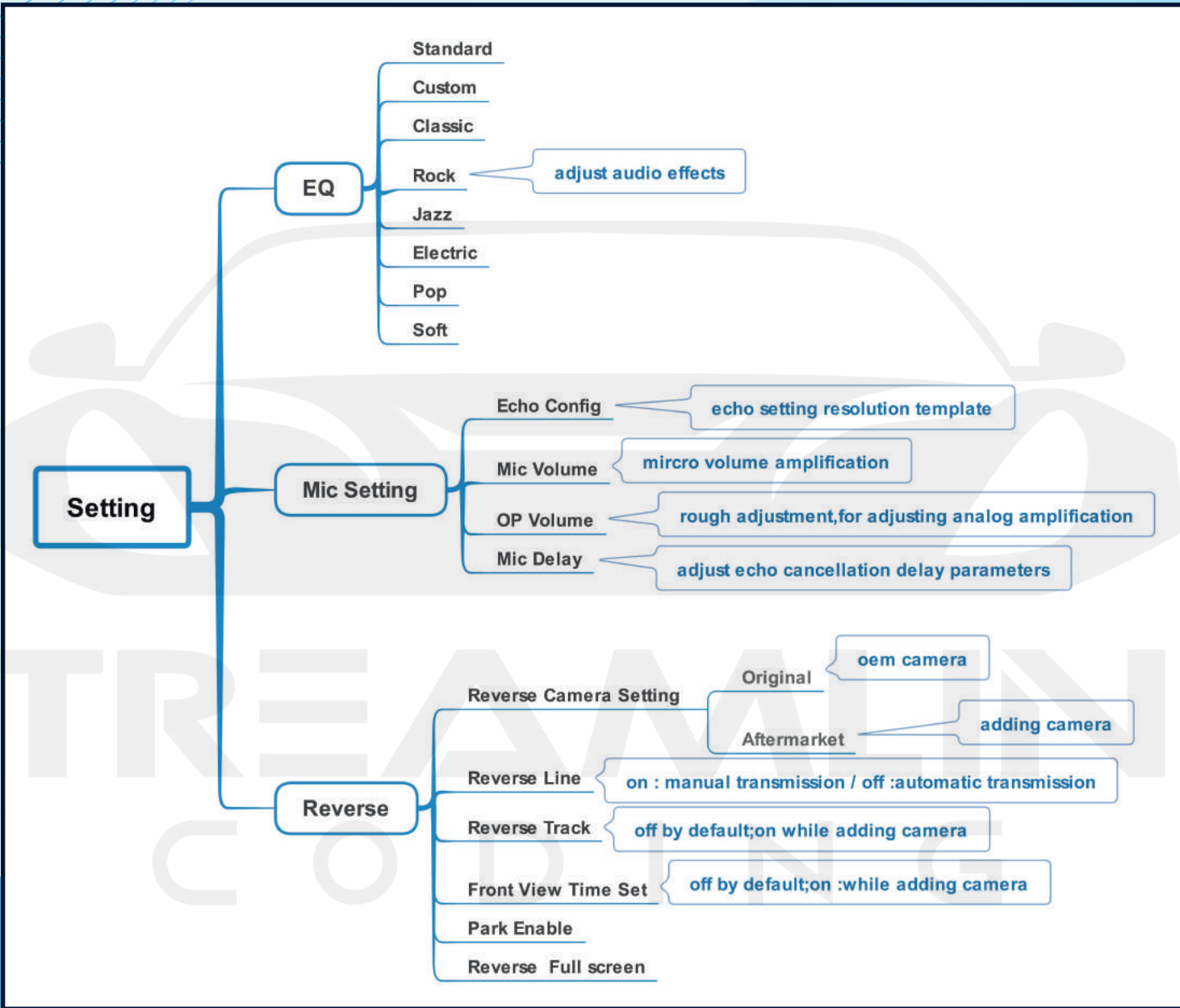


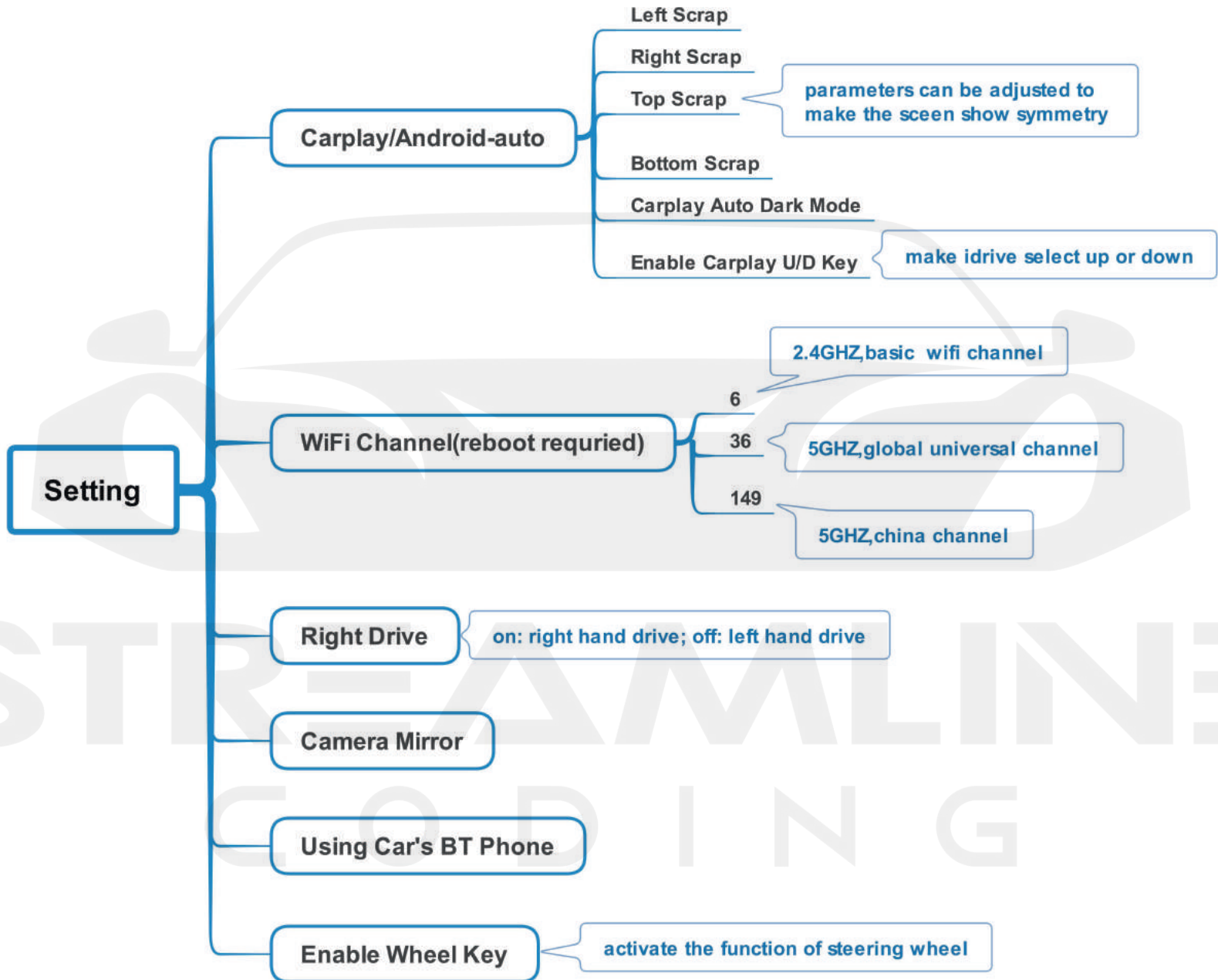
Connection Diagram For Small touchpad or Mouse (method 2):



Setting instruction:





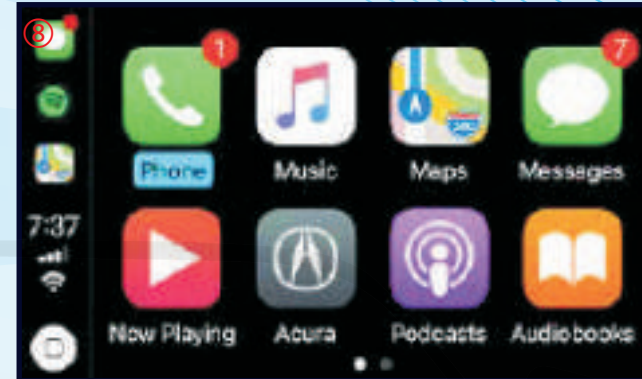
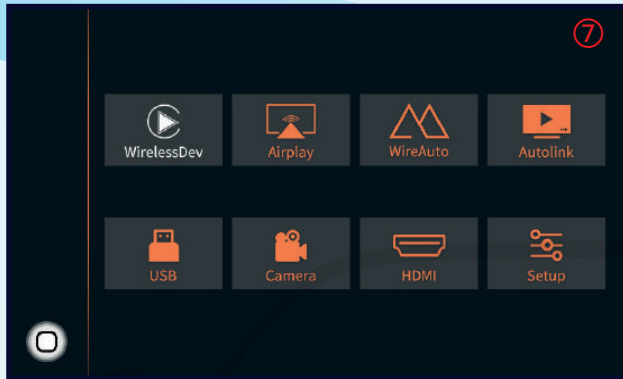


Wireless carplay connection

1. Turn on WIFI (Fig. 1)
2. Turn on Bluetooth (Fig. 2), & connect Carplay's Bluetooth (Fig. 3/4)
3. After the bluetooth connection is completed, the following prompts will pop up, Click 'Allow-Use Carplay' (Fig. 5/6)

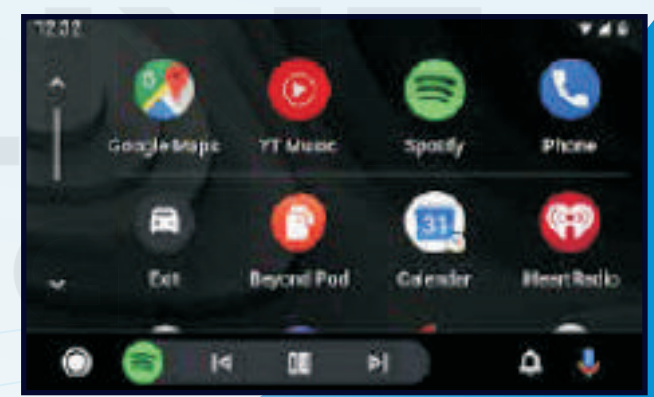
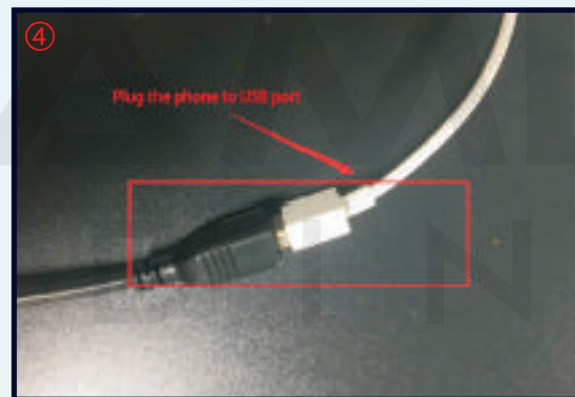
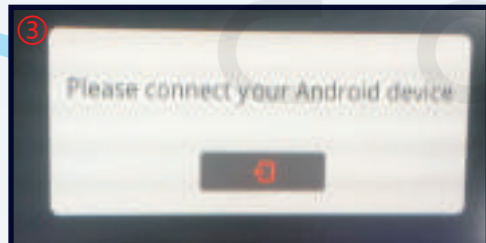
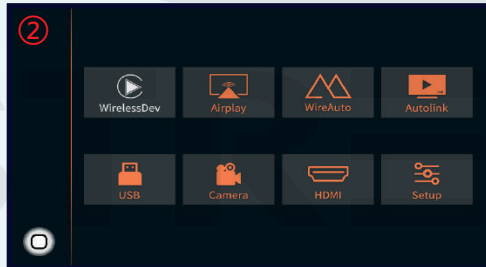
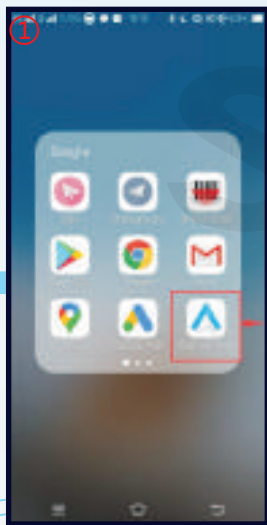


4. After the connection is successful, the Carplay icon will display on the main menu of the screen(Fig.7). And it will enter Carplay automatically(Fig.8)



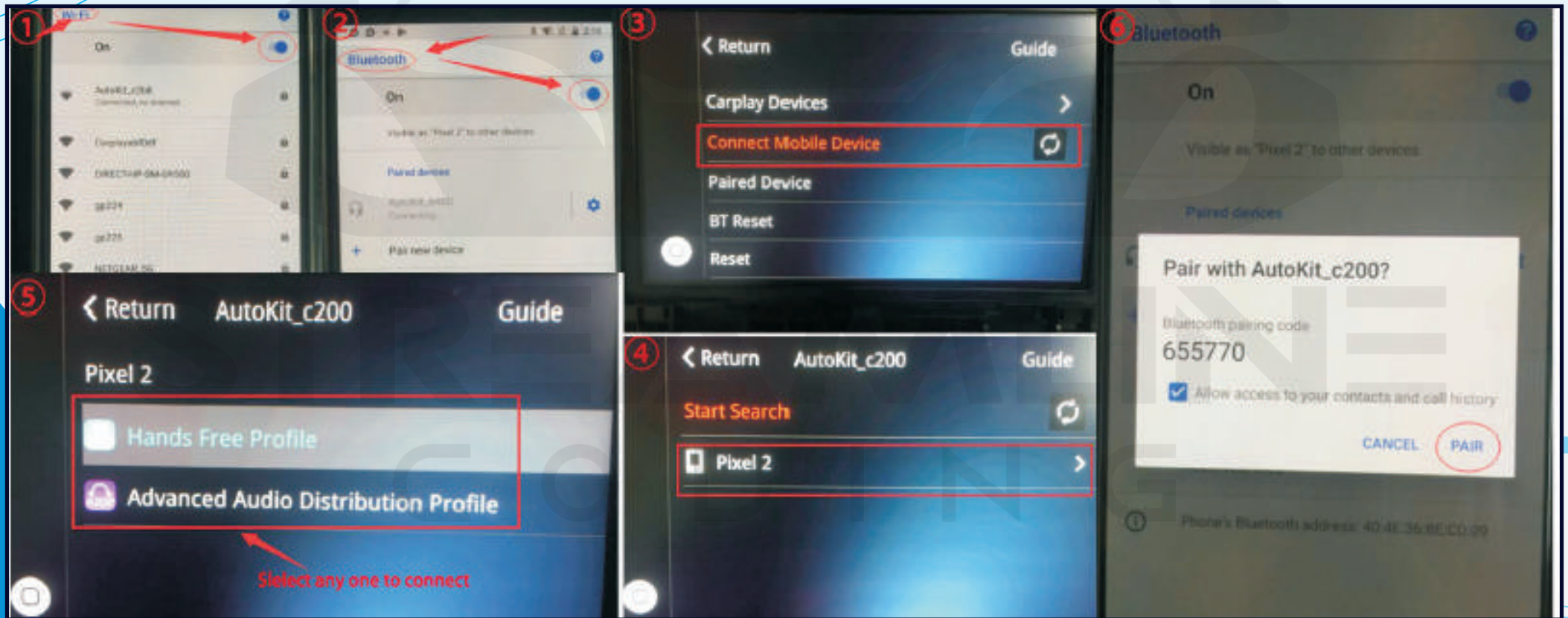
Wired Android auto connection

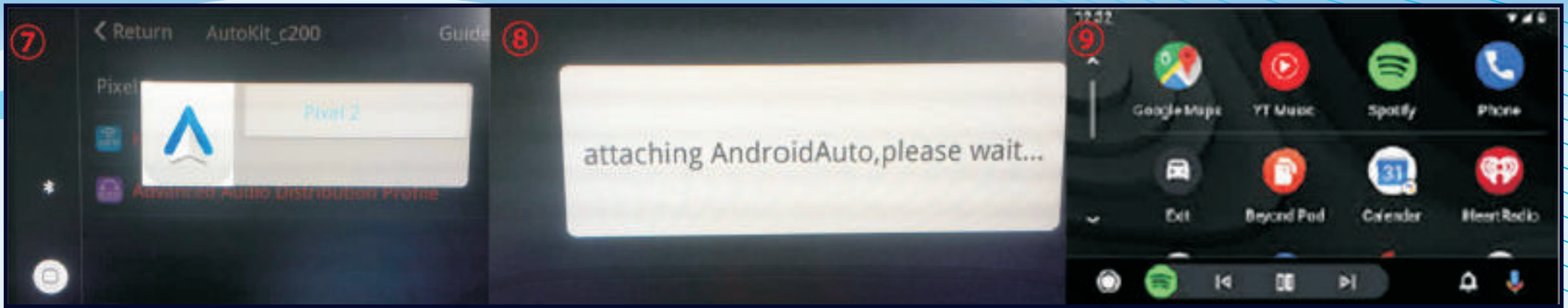
1. Download Android auto APP on your Android phone(Fig.1).
2. Click 'WireAuto' icon(Fig.2), the prompt 'Please connect your Android device' will pop up(Fig.3).
3. Plug your phone to USB port. then it will enter Android auto automatically(Fig.4).



Wireless Android auto connection

1. Turn on WIFI (Fig.1)
2. Turn on Bluetooth (Fig.2)
3. Search the Android phone's bluetooth on the screen in Carplay system(Fig.3/4/5)
4. Pair the bluetooth with your phone.(Fig.6)
5. After connecting the bluetooth, it will pop up the following prompts(Fig.7/8)
6. Then it will enter Android auto automatically(Fig.9)

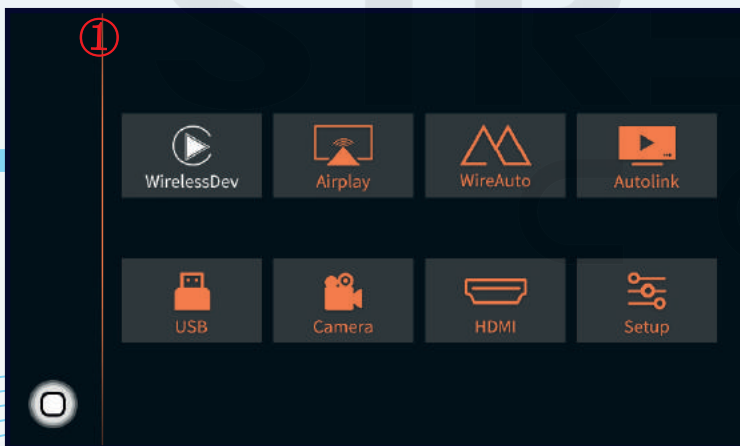




Wireless Airplay connection

1. Click 'Airplay' icon first (Fig.1), the pairing information with the phone will be displayed (Fig.2)
2. Search wifi signal of Airplay and connect (Fig.3/4)
3. Turn on Airplay (Fig5/6)
4. After connecting Airplay, it will show like Fig.7

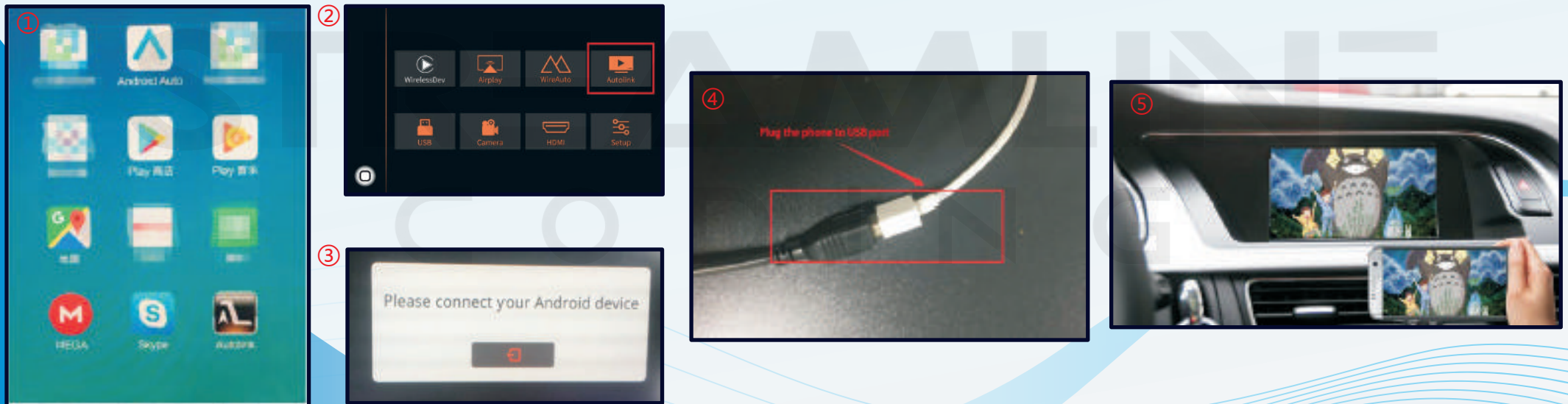
Note: If you have connected Carplay before, you need to disconnect Carplay first!




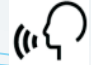


Wired Autolink connection

1. Download Android auto APP on your Android phone(Fig.1).
2. Click 'Autolink' icon(Fig.2), the prompt 'Please connect your Android device' will pop up(Fig.3).
3. Plug your phone to USB port(Fig.4). then it will enter Android auto automatically(Fig.5).



Original buttons

Button	Function	Operation	Remarks
MENU	System switching	Long press the button for 3 seconds	OEM ↔ CarPlay
BACK	Go back	Press the button short time	Apple Car Play Function Google Android Auto
	Restart	Press the button 5 seconds	You can use this function when you get in trouble
KNOB	Move the pointer Left or Right	Turn the dial Move Left or Right	Apple Car Play Function
			Google Android Auto
	Answer/hang up the call	Press the button short time	Apple Car Play Function
			Google Android Auto
	"Siri" "Google Assistant"	Press the button 3 seconds	Apple Car Play Function
			Google Android Auto

FAQ

1.Q:I don't have sound when i connect carplay, what can i do?

A:1) Set the AUX output on the original vehicle.

- 2) Ignore the original car bluetooth instead of just disconnecting.
- 3) Transfer the fiber cable from the original car to the supplied power plug.
- 4) Turn up the AUX volume and the media volume.

2.Q: I can't connect wireless Carplay automatically, what can i do?

A: You can do as followinf solutions.

- 1) Please confirm if you turn on wifi and connect carplay's bluetooth.
- 2) If your car has OEM bluetooth, please delete the connection record, then reconnect carplay's bluetooth.
- 3) Please confirm the wifi antenna is away from metal.
- 4) Please confirm all siri permissions are allowed (Fig. 1)
- 5) Reset the connection records on the phone and car (Fig. 2) simultaneously, then reconnect.



3. Q: The screen will flash, what should I do?

A:1) The screen power line is not connected by default, and only connected to the splash screen.

2) The screen power is connected to the wrong position, it should be connected to the box dial code, please see the specific wiring diagram.

3) The connection of the small gray and green wires on the screen power cord and refer to the previous wiring diagram.

4.Q: The screen displays a white, black or fuzzy screen, what should I do?

A:1) Check whether the LVDS line is connected properly?

2) Only transfer the host can line, not the LVDS line. Does the original car screen display normally? If it is normal, the LVDS line is damaged and needs to be replaced.

5.Q: When I call someone, he can hear himself, how to do?

A: 1) Adjust the volume of the original car to normal use.

2) Turn the volume in 'audio' setting to 13.

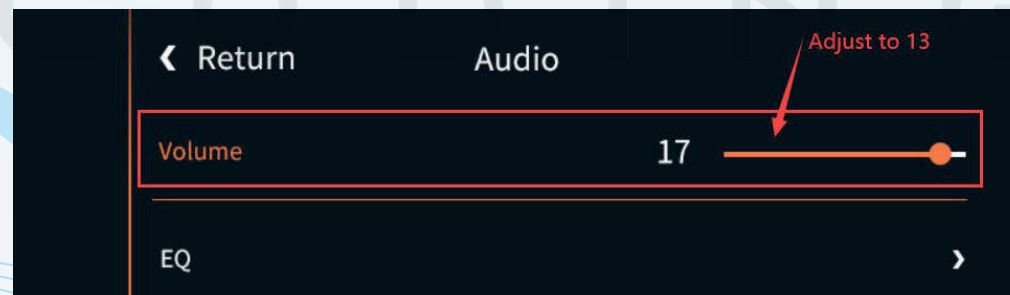
3) Turn the 'Microphone Volume' to 12.

4) 'Microphone OP' tune from 0 until no echo is heard.

5) Adjust 'AEC quality' to 2.

6) If the caller hears the echo interval for a long time, fine-tune the 'Microphone delay'.

7) If the caller hears a small voice, you can fine-tune the 'Microphone Volume' and 'Microphone PGA'.



6.Q: The screen is not displayed correctly, the display is not complete, or the icon is missing, what should I do?

A: According to the dial code table of the screen size, try several more dial codes, and each time you change the dial code, you need to power off.

7.Q: I install the carplay, but the button on steering wheel can't work .

A: Set the setting 'Enable wheel key' to ON(Fig.1)

8.Q: The original car has 360 panoramic camera, how should I set it?

A: 1) Open the CarPlay interface, enter the CarPlay Settings, find the item of reversing, and press OK to enter the reversing option interface.

2) In the reversing option, select the reversing camera option and set it to the original car.

3) The three options of reversing detection line, reversing display track and reversing display radar are set to off.

4) Match the original car reversing option set to high, match 360 display set to off.



9.If the screen flashes after installation, please do the following:

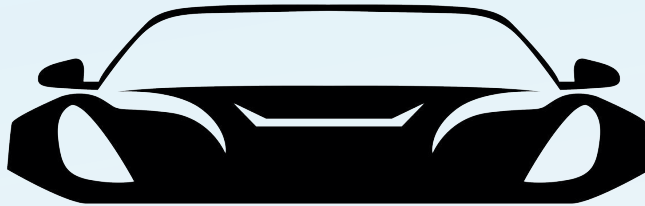
(The last two digits of the power cord label)

15H: Rocker control mode, the default is not connected to this line. When the screen flashes, connect this line, and neither the gray line nor the green line is connected.

17: Knob control mode, the default is not connected to this line. Connect this line when the screen flashes, and the gray line is disconnected and the green line is connected.

19: large touch pad control mode, the default is not connected to this line. Connect this line when the screen flashes, and both the gray line and the green line need to be connected.





STREAMLINE
CODING