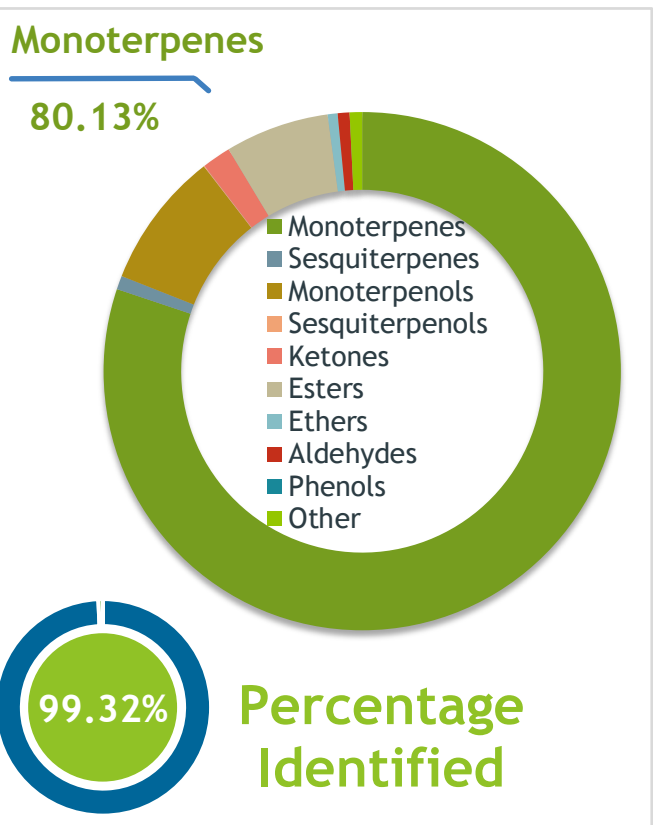


Client **SAVHERA** Source

Tracy's Grace ()
210890900

Sample Tracy's Grace ()
Batch #:..... 210890900
Type:..... Essential Oil Blend
CAS Number:.....
Savhera



Client **SAVHERA** Website

Primary

- 75.84% Limonene
- 6.13% Linalool
- 5.58% Linalyl acetate

Result

Conclusion

No adulterants, diluents, or contaminants were detected via this method. This oil meets the expected profile for genuine Essential Oil Blend of Tracy's Grace ()

Internal Number: | EVS-5003

Essential Validation Services

747 SW 2nd Ave IMB 12 Suite 306
Gainesville, FL 32601

317.361.5044 |
<https://essentialvalidationservices.com/>

Alan Christen

Monoterpenes	80.13%	80.13%
Sesquiterpenes		0.85%
Monoterpenols	8.53%	8.53%
Sesquiterpenols		0.05%
Ketones		1.80%
Esters	6.50%	6.50%
Ethers		0.62%
Aldehydes		0.74%
Phenols		0.00%
Other		0.78%

ESSENTIAL VALIDATION SERVICES | 747 SW 2ND AVE GAINESVILLE, FLORIDA 32601 | 317-361-5044

Client



Source

Tracy's Grace ()

210890900

Total Percentage		99.32%		
Number	RT	Area %	Compound Name	Chemical Family
1	3.88	0.01%	2-Hexanone	Aliphatic Ketone
2	4.70	0.01%	Methyl hexyl ether	Aliphatic Ether
3	5.92	0.01%	1-Hexanol	Aliphatic Alcohol
4	7.59	0.01%	Tricyclene	Monoterpene
5	8.00	1.04%	alpha-Pinene	Monoterpene
6	8.60	0.18%	Camphene	Monoterpene
7	9.54	0.30%	Sabinene	Monoterpene
8	9.70	0.29%	beta-Pinene	Monoterpene
9	9.93	0.03%	1-Octen-3-ol	Aliphatic Alcohol
10	10.13	0.01%	Octan-3-one	Aliphatic Ketone
11	10.29	2.09%	Myrcene	Monoterpene
12	10.60	0.01%	Butyl butyrate	Aliphatic Ester
13	10.87	0.23%	Octanal	Aliphatic Aldehyde
14	11.03	0.11%	delta-3-Carene	Monoterpene
15	11.31	0.03%	Hexyl acetate	Aliphatic Ester
16	11.41	0.01%	alpha-Terpinene	Monoterpene
17	11.75	0.10%	para-Cymene	Monoterpene
18	12.08	75.84%	Limonene	Monoterpene
19	12.32	0.05%	(Z)-beta-Ocimene	Monoterpene
20	12.77	0.05%	(E)-beta-Ocimene	Monoterpene
21	13.23	0.02%	gamma-Terpinene	Monoterpene
22	13.78	0.09%	cis-Linalool oxide (5) (furanoid)	Monoterpenol
23	13.91	0.04%	1-Octanol	Aliphatic Alcohol
24	14.45	0.03%	Terpinolene	Monoterpene
25	14.51	0.05%	trans-Linalool oxide (5) (furanoid)	Monoterpenol
26	15.21	6.13%	Linalool	Monoterpenol
27	15.40	0.04%	Nonanal	Aliphatic Aldehyde
28	15.59	0.04%	1-Octenyl-3 acetate	Monoterpene Ester
29	16.10	0.09%	trans-para-Mentha-2,8-dien-1-ol	Monoterpenol
30	16.47	0.01%	Alloocimene	Monoterpene
31	16.58	0.23%	cis-Limonene oxide	Monoterpene Ether
32	16.78	0.21%	trans-Limonene oxide	Monoterpene Ether
33	17.14	1.61%	Camphor	Monoterpene Ketone
34	17.41	0.03%	Hexyl isobutyrate	Monoterpene Ester
35	17.56	0.04%	Citronellal	Monoterpene Aldehyde

Client



Source

Tracy's Grace ()
210890900

Number	RT	Area %	Compound Name	Chemical Family
36	18.104	0.11%	Lavandulol	Monoterpene Aldehyde
37	18.34	0.57%	Borneol	Monoterpenol
38	18.76	0.72%	Terpinen-4-ol	Monoterpenol
39	19.11	0.03%	para-Cymen-8-ol	Monoterpenol
40	19.25	0.01%	(Z)-3-Hexenyl butyrate	Aliphatic Ester
41	19.45	0.43%	alpha-Terpineol	Monoterpenol
42	20.06	0.19%	Decanal	Aliphatic Aldehyde
43	20.31	0.01%	Octyl acetate	Aliphatic Ester
44	20.57	0.11%	trans-Carveol	Monoterpenol
45	20.87	0.03%	Nerol	Monoterpenol
46	21.03	0.02%	Citronellol	Monoterpenol
47	21.16	0.09%	cis-Carveol	Monoterpenol
48	21.44	0.05%	Neral	Monoterpene Aldehyde
49	21.63	0.17%	Carvone	Monoterpene Ketone
50	21.71	0.03%	Hexyl isovalerate	Monoterpene Ester
51	22.06	5.58%	Linalyl acetate	Monoterpene Ester
52	22.80	0.10%	Citral	Monoterpene Aldehyde
53	23.02	0.04%	Perilla aldehyde	Monoterpene Aldehyde
54	23.11	0.01%	1-Decanol	Monoterpenol
55	23.47	0.04%	Isobornyl acetate	Monoterpene Ether
56	23.59	0.46%	Lavandulyl acetate	Monoterpene Ester
57	24.51	0.05%	Perillyl alcohol	Monoterpenol
58	24.62	0.01%	Undecanal	Sesquiterpene Aldehyde
59	25.57	0.05%	Hexyl tiglate	Monoterpene Ester
60	26.83	0.10%	Neryl acetate	Monoterpene Ester
61	27.40	0.04%	alpha-Cubebene	Sesquiterpene
62	27.54	0.03%	alpha-Ylangene	Sesquiterpene
63	27.67	0.09%	Geranyl acetate	Monoterpene Ester
64	27.95	0.03%	beta-Cubebene	Sesquiterpene
65	28.01	0.03%	7-epi-Sesquithujene	Sesquiterpene
66	28.32	0.01%	1-Tetradecene	Alkene
67	28.98	0.03%	Dodecanal	Aliphatic Aldehyde
68	29.19	0.33%	beta-Caryophyllene	Sesquiterpene
69	29.64	0.03%	Sibirene	Sesquiterpene
70	29.87	0.02%	trans-alpha-Bergamotene	Sesquiterpene
71	30.67	0.01%	alpha-Humulene	Sesquiterpene

ESSENTIAL VALIDATION SERVICES | 74 / SAW ZEE AVE GAINESVILLE, FLORIDA 32601 | 351-7501-5044

Tracy's Grace ()
210890900

72	30.76	0.16%	(Z)-beta-Farnesene	Sesquiterpene
73	31.52	0.01%	trans-Muuro-la-3,5-diene	Sesquiterpene
74	31.72	0.04%	Germacrene D	Sesquiterpene
75	32.20	0.04%	gamma-Gurjunene	Sesquiterpene
76	32.50	0.01%	Valencene	Sesquiterpene
77	32.80	0.06%	Geranyl propionate	Monoterpene Ester
78	32.93	0.02%	beta-Bisabolene	Sesquiterpene
79	33.29	0.03%	beta-Cadinene	Sesquiterpene
80	33.54	0.02%	beta-Sesquiphellandrene	Sesquiterpene
81	35.63	0.13%	Caryophyllene oxide	Sesquiterpene Ether
82	36.37	0.01%	1-Hexadecene	Alkene
83	39.65	0.05%	alpha-Bisabolol	Sesquiterpenol
84	39.97	0.01%	beta-Sinensal	Sesquiterpene Aldehyde

ESSENTIAL VALIDATION SERVICES | 14 SW 2nd AVE GAINESVILLE, FLORIDA 32601 | 351-361-5044