

Client



Source

Organic Just Ice ()
15868

Sample

Organic Just Ice ()
Batch #:..... 15868
Type:..... Essential Oil Blend
CAS Number:...

Savhera

Client



Website

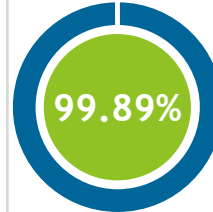
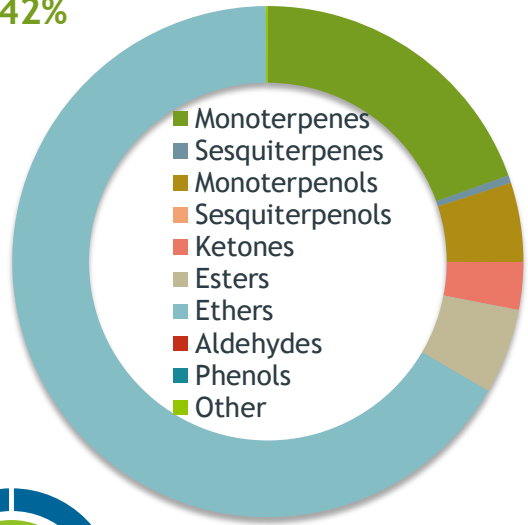


Primary

66.40% | **1,8-Cineole**
5.95% | **para-Cymene**
4.38% | **Limonene**

Ethers

66.42%



Percentage Identified

Result



Conclusion

No adulterants, diluents, or contaminants were detected via this method. This oil meets the expected profile for genuine Essential Oil Blend of Organic Just Ice ()

Internal Number: | EVS-4636



Essential Validation Services

747 SW 2nd Ave IMB 12 Suite 306
Gainesville, FL 32601

317.361.5044 |
<https://essentialvalidationservices.com/>

Alan Christen

Monoterpenes	19.53%	19.53%
Sesquiterpenes		0.48%
Monoterpenols	5	5.02%
Sesquiterpenols		0.00%
Ketones		3.00%
Esters	5	5.42%
Ethers	66.42%	66.42%
Aldehydes		0.00%
Phenols		0.00%
Other		0.13%

ESSENTIAL VALIDATION SERVICES | 747 SW 2ND AVE GAINESVILLE, FLORIDA 32601 | 317-361-5044

- Essential Oil testing is performed by using qualitative GC-MS. Method: SOP.T.01 Client Method
- This report may not be published without the consent of Essential Validation Services.
- Chromatograph image may be requested
- This report is valid for 1 year from the analyzed date

Client



Source

Organic Just Ice ()

15868

Total Percentage		99.89%		
Number	RT	Area %	Compound Name	Chemical Family
1	7.91	0.04%	alpha-Thujene	Monoterpene
2	8.16	3.60%	alpha-Pinene	Monoterpene
3	8.76	0.21%	Camphene	Monoterpene
4	9.87	0.70%	beta-Pinene	Monoterpene
5	10.30	0.01%	Octan-3-one	Aliphatic Ketone
6	10.46	0.49%	Myrcene	Monoterpene
7	10.87	0.02%	3-Octanol	Aliphatic Alcohol
8	11.10	0.61%	alpha-Phellandrene	Monoterpene
9	11.48	0.01%	Hexyl acetate	Aliphatic Ester
10	11.58	0.19%	alpha-Terpinene	Monoterpene
11	11.93	5.95%	para-Cymene	Monoterpene
12	12.12	4.38%	Limonene	Monoterpene
13	12.34	66.40%	1,8-Cineole	Monoterpene Ether
14	12.50	0.26%	(Z)-beta-Ocimene	Monoterpene
15	12.95	0.11%	(E)-beta-Ocimene	Monoterpene
16	13.43	2.94%	gamma-Terpinene	Monoterpene
17	13.97	0.03%	cis-Linalool oxide (5) (furanoid)	Monoterpenol
18	14.65	0.01%	Terpinolene	Monoterpene
19	15.36	0.63%	Linalool	Monoterpenol
20	15.78	0.02%	1-Octenyl-3 acetate	Monoterpene Ester
21	16.66	0.04%	Alloocimene	Monoterpene
22	17.34	0.46%	Camphor	Monoterpene Ketone
23	17.82	1.82%	Menthone	Monoterpene Ketone
24	18.22	0.41%	Isomenthone	Monoterpene Ketone
25	18.50	0.41%	NeoMenthol	Monoterpenol
26	18.89	3.55%	Menthol	Monoterpenol
27	18.97	0.18%	Terpinen-4-ol	Monoterpenol
28	19.35	0.04%	IsoMenthol	Monoterpenol
29	19.49	3.83%	Methyl salicylate	Phenolic Ester
30	19.65	0.18%	alpha-Terpineol	Monoterpenol
31	21.56	0.09%	Pulegone	Monoterpene Ketone
32	21.83	0.21%	Carvone	Monoterpene Ketone
33	22.25	0.86%	Linalyl acetate	Monoterpene Ester
34	23.67	0.06%	Bornyl acetate	Monoterpene Ester
35	23.79	0.11%	Lavandulyl acetate	Monoterpene Ester

