

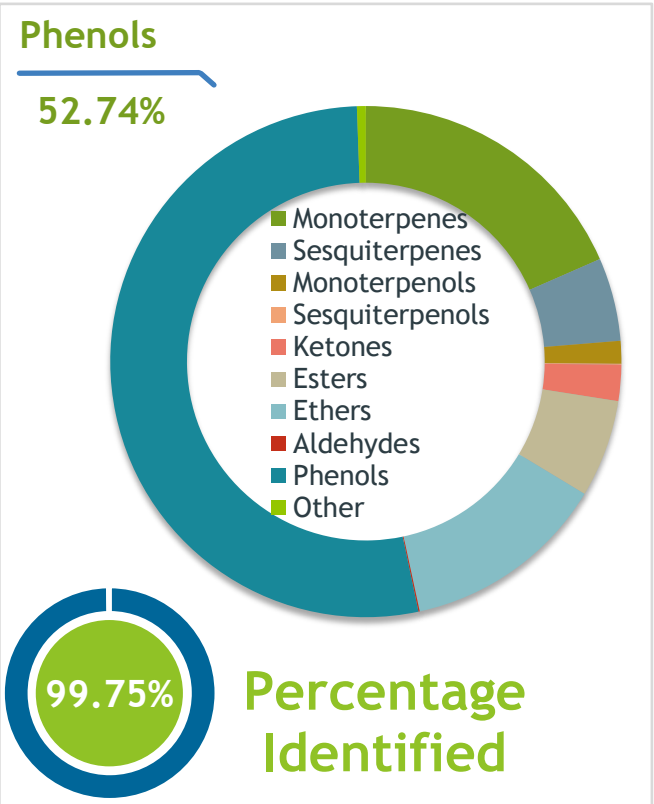
Client **SAVHERA** Source

Organic Sonia's Shield ()
15841

Sample Organic Sonia's Shield ()
Batch #:..... 15841
Type:..... Essential Oil Blend
CAS Number:.....
Savhera

Client **SAVHERA** Website 

Primary **33.47%** Eugenol
18.26% (E)-Cinnamaldehyde
12.58% 1,8-Cineole



Result **APPROVED**

Conclusion No adulterants, diluents, or contaminants were detected via this method. This oil meets the expected profile for genuine Essential Oil Blend of Organic Sonia's Shield ()
Internal Number: | EVS-4632


Essential Validation Services
747 SW 2nd Ave IMB 12 Suite 306
Gainesville, FL 32601
317.361.5044 |
<https://essentialvalidationservices.com/>
Alan Christen

Monoterpenes	18.43%	18.43%
Sesquiterpenes	5.27%	5.27%
Monoterpenols	1.44%	1.44%
Sesquiterpenols	0.06%	0.06%
Ketones	2.28%	2.28%
Esters	6.18%	6.18%
Ethers	12.96%	12.96%
Aldehydes	0.08%	0.08%
Phenols	52.74%	52.74%
Other	0.56%	0.56%

ESSENTIAL VALIDATION SERVICES | 747 SW 2ND AVE GAINESVILLE, FLORIDA 32601 | 317-361-5044

- Essential Oil testing is performed by using qualitative GC-MS. Method: SOP.T.01 Client Method
- This report may not be published without the consent of Essential Validation Services.
- Chromatograph image may be requested
- This report is valid for 1 year from the analyzed date

Client



Source

Organic Sonia's Shield ()

15841

Total Percentage		99.75%		
Number	RT	Area %	Compound Name	Chemical Family
1	4.98	0.02%	Furfural	Furan
2	6.67	0.03%	Styrene	Phenylpropanoid
3	7.74	0.03%	Tricyclene	Monoterpene
4	7.91	0.13%	alpha-Thujene	Monoterpene
5	8.15	2.27%	alpha-Pinene	Monoterpene
6	8.76	0.84%	Camphene	Monoterpene
7	9.24	0.28%	Benzaldehyde	Simple Phenolic
8	9.70	0.15%	Sabinene	Monoterpene
9	9.87	2.33%	beta-Pinene	Monoterpene
10	10.10	0.01%	1-Octen-3-ol	Aliphatic Alcohol
11	10.28	0.02%	6-Methyl-5-hepten-2-one	Aliphatic Ketone
12	10.45	0.41%	Myrcene	Monoterpene
13	11.09	0.05%	alpha-Phellandrene	Monoterpene
14	11.20	0.04%	delta-3-Carene	Monoterpene
15	11.57	0.10%	alpha-Terpinene	Monoterpene
16	11.90	0.74%	para-Cymene	Monoterpene
17	12.13	9.85%	Limonene	Monoterpene
18	12.23	12.58%	1,8-Cineole	Monoterpene Ether
19	12.49	0.02%	(Z)-beta-Ocimene	Monoterpene
20	12.70	0.11%	Salicylaldehyde	Simple Phenolic
21	12.94	0.03%	(E)-beta-Ocimene	Monoterpene
22	13.41	1.33%	gamma-Terpinene	Monoterpene
23	13.94	0.03%	trans-Sabinene hydrate	Monoterpenol
24	14.64	0.11%	Terpinolene	Monoterpene
25	15.36	0.20%	Linalool	Monoterpenol
26	15.81	0.07%	2-Phenylethanol	Simple Phenolic
27	17.19	0.02%	2-Methylbenzofuran	Phenylpropanoid
28	17.34	2.07%	Camphor	Monoterpene Ketone
29	18.10	0.15%	Hydrocinnamaldehyde	Phenylpropanoid
30	18.53	0.63%	Borneol	Monoterpenol
31	18.96	0.18%	Terpinen-4-ol	Monoterpenol
32	19.47	0.11%	Methyl salicylate	Phenolic Ester
33	19.65	0.39%	alpha-Terpineol	Monoterpenol
34	20.67	0.12%	(Z)-Cinnamaldehyde	Phenylpropanoid
35	21.64	0.08%	Citral	Monoterpene Aldehyde

ESSENTIAL VALIDATION SERVICES | 747 SW 2ND AVE GAINESVILLE, FLORIDA 32601 | 317-361-5044

- Essential Oil testing is performed by using qualitative GC-MS. Method: SOP.T.01 Client Method
 - This report may not be published without the consent of Essential Validation Services.
 - Chromatograph image may be requested
 - This report is valid for 1 year from the analyzed date

Client



Source

Organic Sonia's Shield ()
15841

Number	RT	Area %	Compound Name	Chemical Family
36	21.829	0.19%	Carvone	Monoterpene Aldehyde
37	22.24	0.03%	Linalyl acetate	Monoterpene Ester
38	22.35	0.02%	2-Phenylethyl acetate	Phenolic Ester
39	22.46	0.07%	Chavicol	Phenylpropanoid
40	23.21	18.26%	(E)-Cinnamaldehyde	Phenylpropanoid
41	23.68	0.26%	Bornyl acetate	Monoterpene Ester
42	24.66	0.02%	Cinnamyl alcohol	Phenylpropanoid
43	26.42	0.01%	alpha-Cubebene	Sesquiterpene
44	26.83	33.47%	Eugenol	Phenylpropanoid
45	27.04	0.11%	Neryl acetate	Monoterpene Ester
46	27.63	0.21%	alpha-Copaene	Sesquiterpene
47	27.87	0.02%	Geranyl acetate	Monoterpene Ester
48	28.76	0.03%	Methyl eugenol	Phenylpropanoid
49	29.42	4.06%	beta-Caryophyllene	Sesquiterpene
50	29.77	0.01%	Isocaryophyllene	Sesquiterpene
51	29.92	0.28%	Coumarin	Coumarin
52	30.08	0.08%	cis-alpha-Bergamotene	Sesquiterpene
53	30.19	0.01%	Aromadendrene	Sesquiterpene
54	30.55	0.51%	(E)-Cinnamyl acetate	Phenylpropanoid Ester
55	30.88	0.54%	alpha-Humulene	Sesquiterpene
56	31.07	0.02%	allo-Aromadendrene	Sesquiterpene
57	31.61	0.03%	trans-Cadina-1(6),4-diene	Sesquiterpene
58	31.74	0.06%	gamma-Murolene	Sesquiterpene
59	32.25	0.02%	beta-Selinene	Sesquiterpene
60	32.54	0.01%	alpha-Selinene	Sesquiterpene
61	32.71	0.03%	alpha-Murolene	Sesquiterpene
62	33.14	0.12%	beta-Bisabolene	Sesquiterpene
63	33.25	0.03%	gamma-Cadinene	Sesquiterpene
64	33.44	5.12%	Eugenyl acetate	Phenylpropanoid Ester
65	33.83	0.11%	(E)-2-Methoxycinnamaldehyde	Phenylpropanoid
66	34.02	0.03%	trans-Cadina-1,4-diene	Sesquiterpene
67	35.24	0.04%	(E)-Nerolidol	Sesquiterpenol
68	35.60	0.01%	Caryophyllenyl alcohol	Monoterpenol
69	35.85	0.35%	Caryophyllene oxide	Sesquiterpene Ether
70	36.92	0.03%	Humulene epoxide II	Sesquiterpene Ether
71	37.32	0.02%	Widdrol	Sesquiterpenol

ESSENTIAL VALIDATION SERVICES | 14 / SAV Z... AVE GAINESVILLE, FLORIDA 32601 | 351-7501-5044

- Essential Oil testing is performed by using qualitative GC-MS. Method: SOP.T.01 Client Method
 - This report may not be published without the consent of Essential Validation Services.
 - Chromatograph image may be requested
 - This report is valid for 1 year from the analyzed date

