

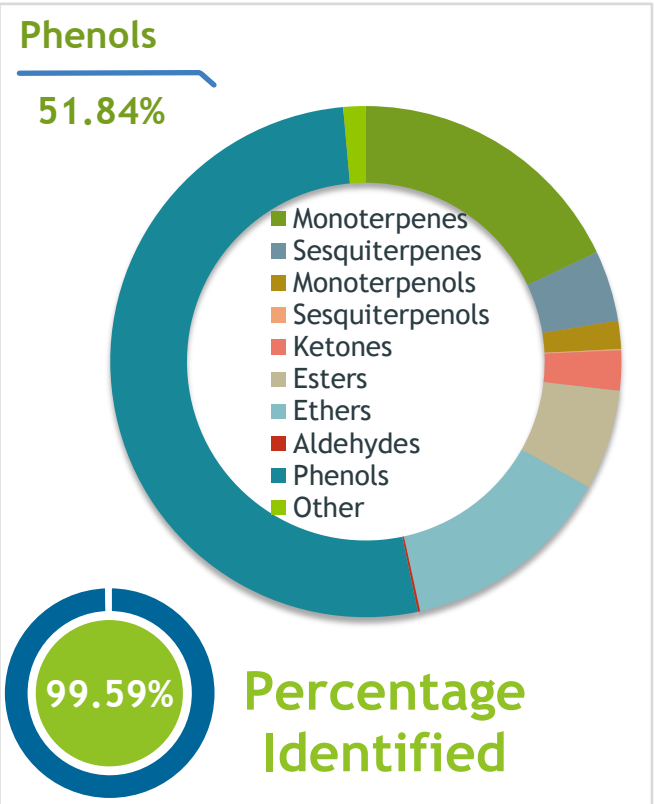
Client **SAVHERA** Source

Organic Sonia's Shield ()  
14795

Sample Organic Sonia's Shield ()  
Batch #:..... 14795  
Type:..... Essential Oil Blend  
CAS Number:.....  
Savhera

Client **SAVHERA** Website 

Primary **32.88%** Eugenol  
**18.13%** (E)-Cinnamaldehyde  
**12.30%** 1,8-Cineole



Result **APPROVED**

Conclusion No adulterants, diluents, or contaminants were detected via this method. This oil meets the expected profile for genuine Essential Oil Blend of Organic Sonia's Shield ()  
Internal Number: | EVS-4631

  
**Essential Validation Services**  
747 SW 2nd Ave IMB 12 Suite 306  
Gainesville, FL 32601  
317.361.5044 |  
<https://essentialvalidationservices.com/>  
*Alan Christen*

Monoterpenes	17.96%	17.96%
Sesquiterpenes	4.48%	4.48%
Monoterpenols	1.77%	1.77%
Sesquiterpenols	0.09%	0.09%
Ketones	2.53%	2.53%
Esters	6.35%	6.35%
Ethers	13.41%	13.41%
Aldehydes	0.15%	0.15%
Phenols	51.84%	51.84%
Other	1.42%	1.42%

ESSENTIAL VALIDATION SERVICES | 747 SW 2ND AVE GAINESVILLE, FLORIDA 32601 | 317-361-5044

- Essential Oil testing is performed by using qualitative GC-MS. Method: SOP.T.01 Client Method  
- This report may not be published without the consent of Essential Validation Services.  
- Chromatograph image may be requested  
- This report is valid for 1 year from the analyzed date

Client



Source

Organic Sonia's Shield ()

14795

Total Percentage		99.59%		
Number	RT	Area %	Compound Name	Chemical Family
1	6.68	0.03%	Styrene	Phenylpropanoid
2	7.74	0.03%	Tricyclene	Monoterpene
3	7.91	0.14%	alpha-Thujene	Monoterpene
4	8.16	2.21%	alpha-Pinene	Monoterpene
5	8.76	0.82%	Camphene	Monoterpene
6	9.24	0.22%	Benzaldehyde	Simple Phenolic
7	9.57	0.03%	Isopropyl tiglate	Aliphatic Ester
8	9.71	0.15%	Sabinene	Monoterpene
9	9.87	2.76%	beta-Pinene	Monoterpene
10	10.09	0.02%	1-Octen-3-ol	Aliphatic Alcohol
11	10.28	0.02%	Octan-3-one	Aliphatic Ketone
12	10.46	0.36%	Myrcene	Monoterpene
13	11.10	0.03%	alpha-Phellandrene	Monoterpene
14	11.20	0.05%	delta-3-Carene	Monoterpene
15	11.57	0.07%	alpha-Terpinene	Monoterpene
16	11.91	1.48%	para-Cymene	Monoterpene
17	12.14	8.93%	Limonene	Monoterpene
18	12.25	12.30%	1,8-Cineole	Monoterpene Ether
19	12.49	0.01%	(Z)-beta-Ocimene	Monoterpene
20	12.71	0.07%	Salicylaldehyde	Simple Phenolic
21	12.95	0.01%	(E)-beta-Ocimene	Monoterpene
22	13.42	0.83%	gamma-Terpinene	Monoterpene
23	13.94	0.05%	trans-Sabinene hydrate	Monoterpenol
24	14.64	0.08%	Terpinolene	Monoterpene
25	15.36	0.24%	Linalool	Monoterpenol
26	15.59	0.01%	Nonanal	Aliphatic Aldehyde
27	15.82	0.04%	2-Phenylethanol	Simple Phenolic
28	16.99	0.01%	trans-para-Mentha-2,8-dien-1-ol	Monoterpenol
29	17.10	0.01%	trans-Pinocarveol	Monoterpenol
30	17.35	2.34%	Camphor	Monoterpene Ketone
31	17.75	0.02%	Citronellal	Monoterpene Aldehyde
32	17.83	0.01%	Menthone	Monoterpene Ketone
33	18.10	0.08%	Hydrocinnamaldehyde	Phenylpropanoid
34	18.54	0.71%	Borneol	Monoterpenol
35	18.88	0.02%	Menthol	Monoterpenol

ESSENTIAL VALIDATION SERVICES | 747 SW 2<sup>ND</sup> AVE GAINESVILLE, FLORIDA 32601 | 317-361-5044

- Essential Oil testing is performed by using qualitative GC-MS. Method: SOP.T.01 Client Method  
 - This report may not be published without the consent of Essential Validation Services.  
 - Chromatograph image may be requested  
 - This report is valid for 1 year from the analyzed date

Client



Source

Organic Sonia's Shield ()  
14795

Number	RT	Area %	Compound Name	Chemical Family
36	18.962	0.23%	Terpinen-4-ol	Monoterpenol
37	19.30	0.01%	para-Cymen-8-ol	Monoterpenol
38	19.47	0.03%	Methyl salicylate	Phenolic Ester
39	19.65	0.46%	alpha-Terpineol	Monoterpenol
40	20.67	0.20%	(Z)-Cinnamaldehyde	Phenylpropanoid
41	21.65	0.12%	Citral	Monoterpene Aldehyde
42	21.83	0.16%	Carvone	Monoterpene Ketone
43	22.25	0.03%	Linalyl acetate	Monoterpene Ester
44	22.50	0.05%	Chavicol	Phenylpropanoid
45	23.24	18.13%	(E)-Cinnamaldehyde	Phenylpropanoid
46	23.69	0.28%	Bornyl acetate	Monoterpene Ester
47	24.68	0.02%	Cinnamyl alcohol	Phenylpropanoid
48	26.43	0.02%	alpha-Cubebene	Sesquiterpene
49	26.87	32.88%	Eugenol	Phenylpropanoid
50	27.05	0.15%	Neryl acetate	Monoterpene Ester
51	27.64	0.20%	alpha-Copaene	Sesquiterpene
52	27.88	0.08%	Geranyl acetate	Monoterpene Ester
53	28.78	0.02%	Methyl eugenol	Phenylpropanoid
54	29.44	3.31%	beta-Caryophyllene	Sesquiterpene
55	29.94	0.99%	Coumarin	Coumarin
56	30.08	0.07%	cis-alpha-Bergamotene	Sesquiterpene
57	30.20	0.03%	Aromadendrene	Sesquiterpene
58	30.56	0.41%	(E)-Cinnamyl acetate	Phenylpropanoid Ester
59	30.89	0.60%	alpha-Humulene	Sesquiterpene
60	31.61	0.01%	trans-Cadina-1(6),4-diene	Sesquiterpene
61	31.75	0.07%	gamma-Murolene	Sesquiterpene
62	32.25	0.02%	beta-Selinene	Sesquiterpene
63	32.55	0.01%	alpha-Selinene	Sesquiterpene
64	32.72	0.03%	alpha-Murolene	Sesquiterpene
65	33.14	0.08%	beta-Bisabolene	Sesquiterpene
66	33.26	0.02%	gamma-Cadinene	Sesquiterpene
67	33.47	5.31%	Eugenyl acetate	Phenylpropanoid Ester
68	33.59	0.01%	trans-Calamenene	Sesquiterpene
69	33.84	0.10%	(E)-2-Methoxycinnamaldehyde	Phenylpropanoid
70	34.65	0.02%	Italicene epoxide	Sesquiterpene Ester
71	35.25	0.02%	(E)-Nerolidol	Sesquiterpenol

ESSENTIAL VALIDATION SERVICES | 14 SAVHERA AVE GAINESVILLE, FLORIDA 32601 | 352-350-5044

- Essential Oil testing is performed by using qualitative GC-MS. Method: SOP.T.01 Client Method  
 - This report may not be published without the consent of Essential Validation Services.  
 - Chromatograph image may be requested  
 - This report is valid for 1 year from the analyzed date

