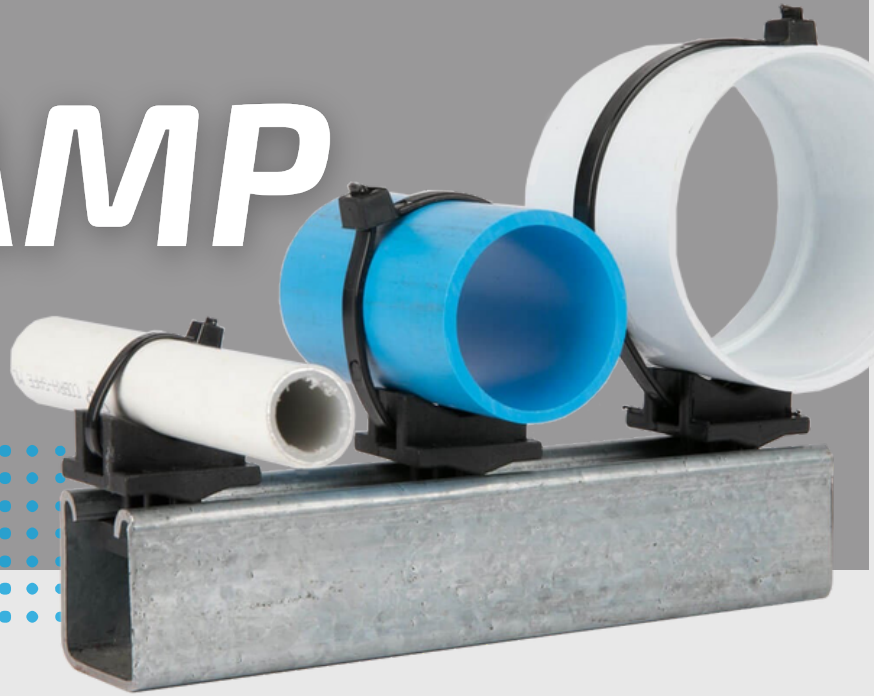


MUTAPE

UNICLAMP

UNIVERSAL CLAMPING SYSTEM



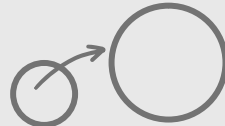
85% FASTER INSTALLATION

Compatible with the Uniclamp Wall mount, which enables individual pipe mounting; or with a 41mm strut channel, for multiple mounting, this tool-free clamping system allows you to simply place, twist, and strap, and your installation is complete.



DURABLE

Uniclamp's 30% glass-reinforced nylon 6 design means that it is maintenance free and will never corrode, never rattle loose, is resistant to 95% of industrial corrosives and even has a UV lifespan of up to 20 years outdoors.



UNIVERSAL SIZING

No need for different sizes of clamps on a project, the Uniclamp can accommodate any sized piping or cabling from 9-127mm. As an installer this means easier procurement, less stock variety and less on-site confusion.



MULTI PURPOSE

Whether you're in HVAC, Oil & Gas, Solar, Telecoms, Plumbing or Electrical, Uniclamp is the right choice for all of your clamping needs.





The Uniclamp is a globally patented universal clamping solution that is versatile, easy to use, and quick to install.



UNICLAMP

N00020

Uniclamp installs quick and easy by slotting either into a 41mm strut or the Uniclamp Wall Mount. Strap various sized pipes ranging from 9-127mm in place with either a zip-tie or steel strap depending on application.



UNICLAMP WALL MOUNT

N00021

This handy accessory allows the Uniclamp to be fixed to any flat surface. Use an appropriate screw in the 6.5mm dual mounting points and simply slot the Uniclamp in and strap your pipe. Its unique raised design leaves ample space between the wall and piping for adequate cleaning.



UNICLAMP VBAT

N00022

For use as either as hanger, using a 8mm threaded rod, or as a single fixing wall mount. The versatile Vbat can strap various sized piped ranging from 9-127mm in place with either a zip-tie or steel strap depending on application.



HDPE SLEEVE

N00023

The ideal accessory to protect insulation on a pipe. The sleeve secures both the pipe and the insulation in place so the insulation is not compromised by needing to be cut, and it distributes the force of the strapping evenly leading to no compression of the insulation.

TO LEARN MORE CHECK OUT OUR WEBSITE

CALL US

011 422 1538
info@nutape.co.za
www.nutape.co.za

NUTAPE