

Find more pages like this in our Big Fun Workbook!
Visit Highlights.com

More About You!

Answer these questions about yourself.

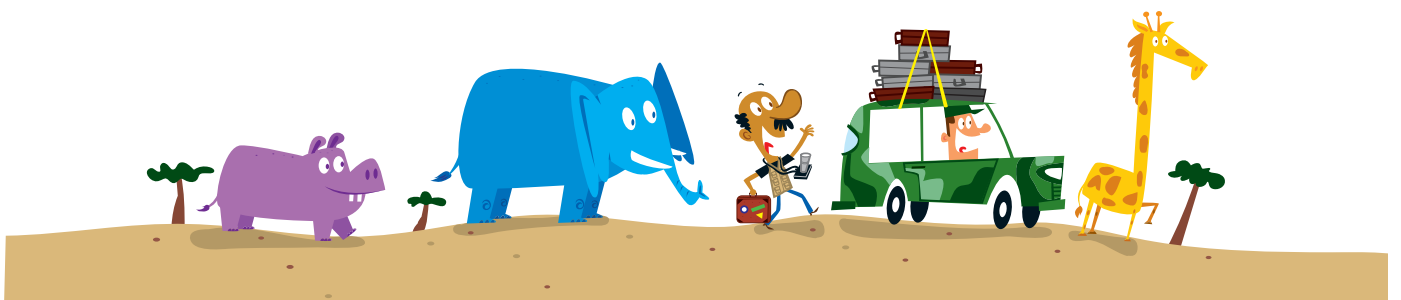
What makes you laugh?

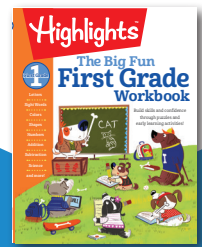
What do you want to be when you grow up?

Which superpower would you want to have?

What flavor of ice cream would you invent?

If you could be any animal, which animal would you be?





Find more pages like this in our Big Fun Workbook!
Visit Highlights.com

Blooming Humor

There are more than flowers growing in this garden. Count the number of petals on each flower. Then write the matching code letter in the center of the flower. Continue to fill in the flowers to find the answer to the riddle.

What did the dog do after he swallowed a firefly?

KEY

- | | |
|-----|------|
| 3-E | 9-K |
| 4-D | 10-A |
| 5-I | 11-T |
| 6-R | 12-B |
| 7-H | 13-W |
| 8-G | 14-L |

The garden contains the following flowers in a grid:

- Row 1: 6 flowers (purple, yellow, blue, yellow, red, purple)
- Row 2: 6 flowers (red, purple, blue, yellow, red, purple)
- Row 3: 6 flowers (blue, yellow, red, purple, blank, blank)
- Row 4: 6 flowers (red, purple, blue, yellow, red, purple)

At the bottom right, there is a vertical purple bar with a small circle below it.

Sub-track-tion

Solve these subtraction problems.
Place the letters that represent each
number in the spaces below to
answer the riddle.



What do you call
a train with a cold?

—
1 2 3 4 4

— — — —
2 3 4 4

— — — — —
5 6 1 7 8



Find more pages
like this in our Big
Fun Workbook!
Visit Highlights.com

$$9 - 4 = \mathbf{T}$$

$$10 - 7 = \mathbf{H}$$

$$13 - 7 = \mathbf{R}$$

$$6 - 2 = \mathbf{O}$$

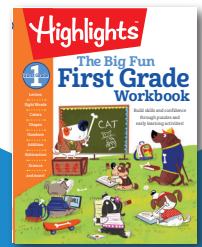
$$15 - 8 = \mathbf{I}$$

$$8 - 6 = \mathbf{C}$$

$$12 - 11 = \mathbf{A}$$

$$12 - 4 = \mathbf{N}$$

BR and GR

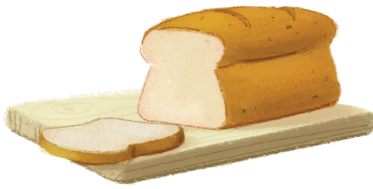


Find more pages like this in our Big Fun Workbook! Visit Highlights.com

The *br* sound can be heard at the beginning of the word *brain*.

Brianna's grocery list is missing a few letters. Can you write the letters **br** or **gr** in the list to make sure she grabs everything?

The *gr* sound can be heard at the beginning of the word *grin*.



__ __ ead



__ __ anola

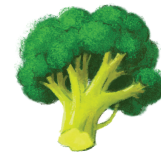
__ __ ownies



__ __ apes



__ __ occoli

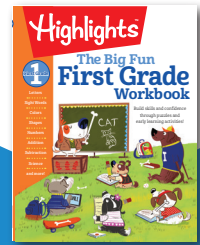


__ __ avy



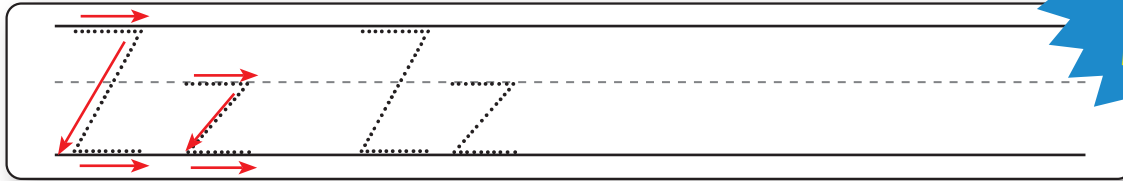
Knock, knock.
Who's there?
Grub.
Grub who?

Grub (*grab*) hold of my hand and let's get out of here.



Find more pages like this in our Big Fun Workbook!
Visit Highlights.com

Zz Trace and write uppercase **Z** and lowercase **z**.



Trace this tongue twister. See if you can say it five times, fast!



Zadie the zebra

grazed on grass.

.....
It's time for these horses to catch some **Z**'s. How many **Z**'s can you find in this picture?

