



QUICK SETUP - START HERE SAVE THIS MANUAL

The Powder Press Parts Kit

*Thank you for purchasing Genuine
The Powder Press Parts Kit
Press powder in no time flat!*

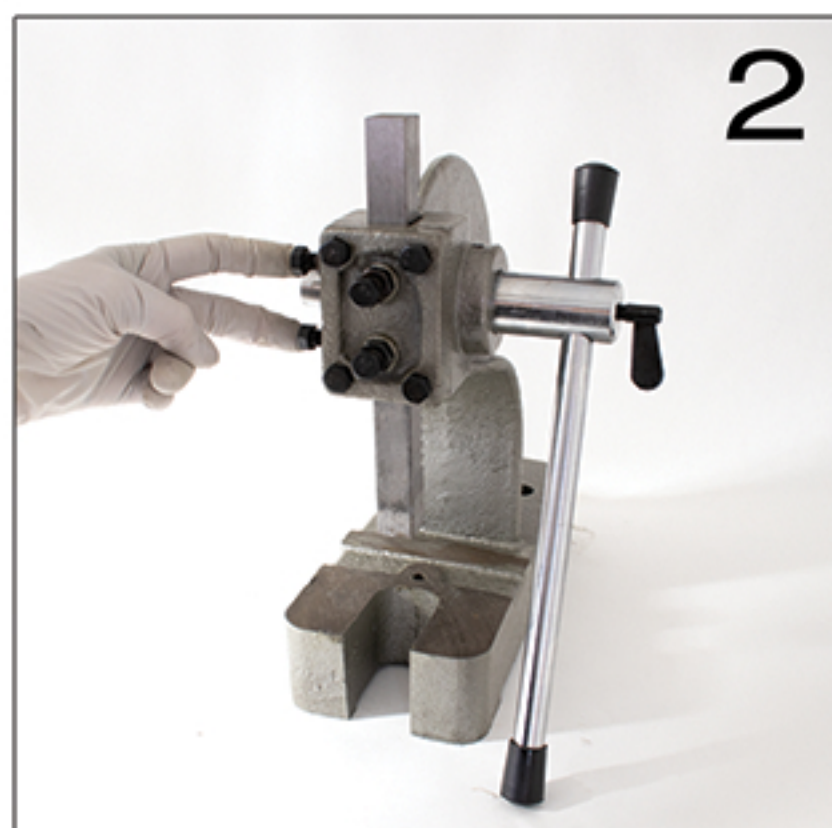


Easy Assembly of The Powder Press Parts Kit

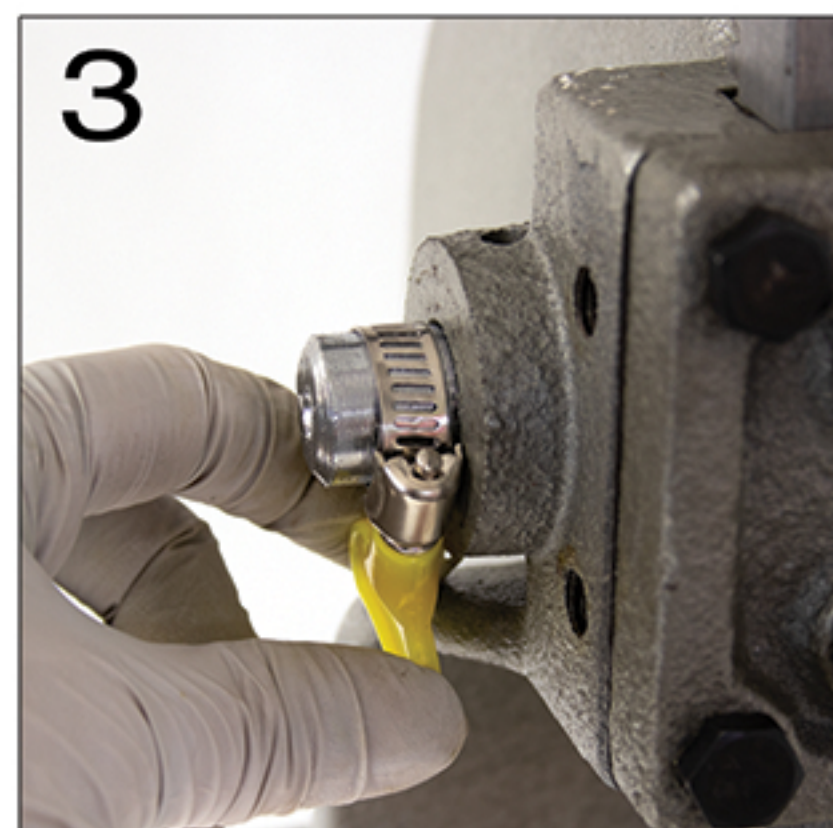
Carefully unbox your 1/2 ton arbor press (not included) and you're ready to get started



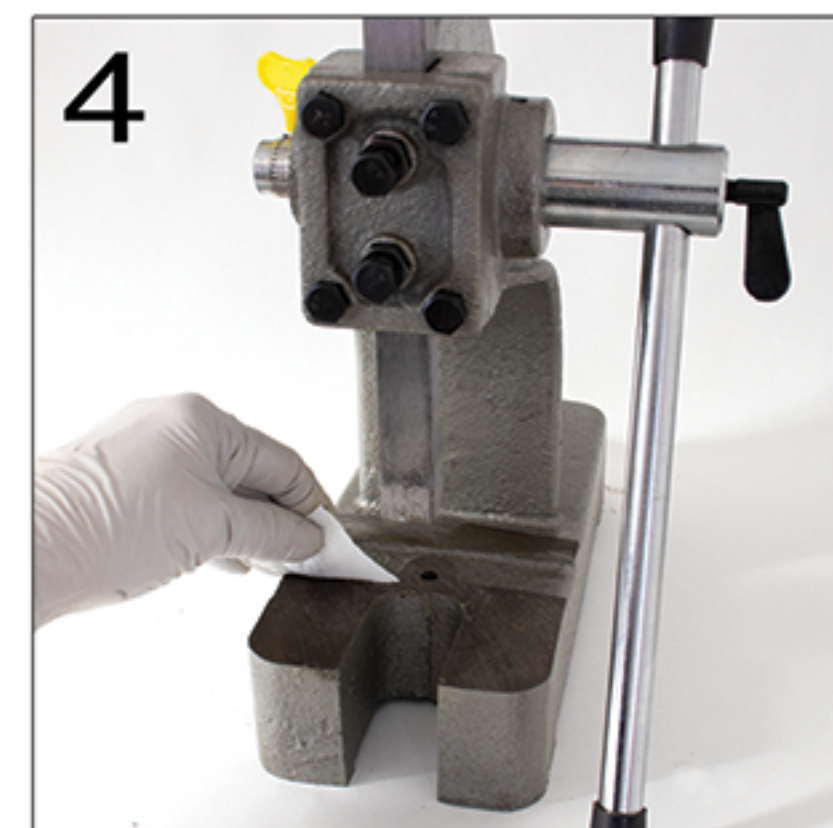
Get rid of the anvil plate and O ring that came with your arbor press - don't need 'em.



Remove and get rid of the 2 left side bolts, you don't need 'em.



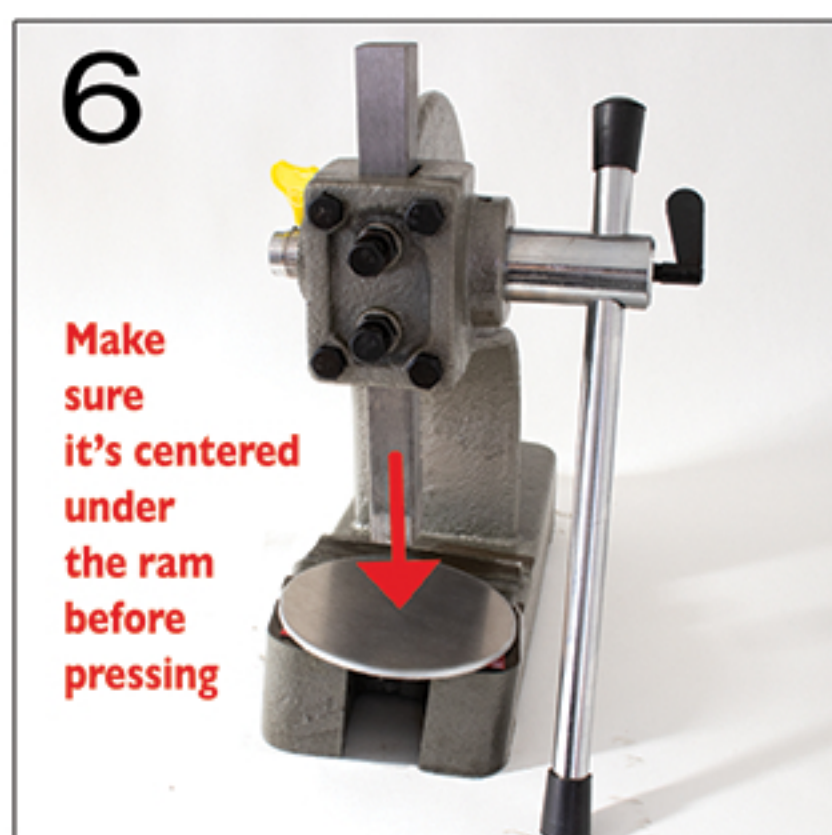
Insert the lever arm, the gears engage, then slide the yellow clamp and tighten. The yellow tab should be parallel with the body.



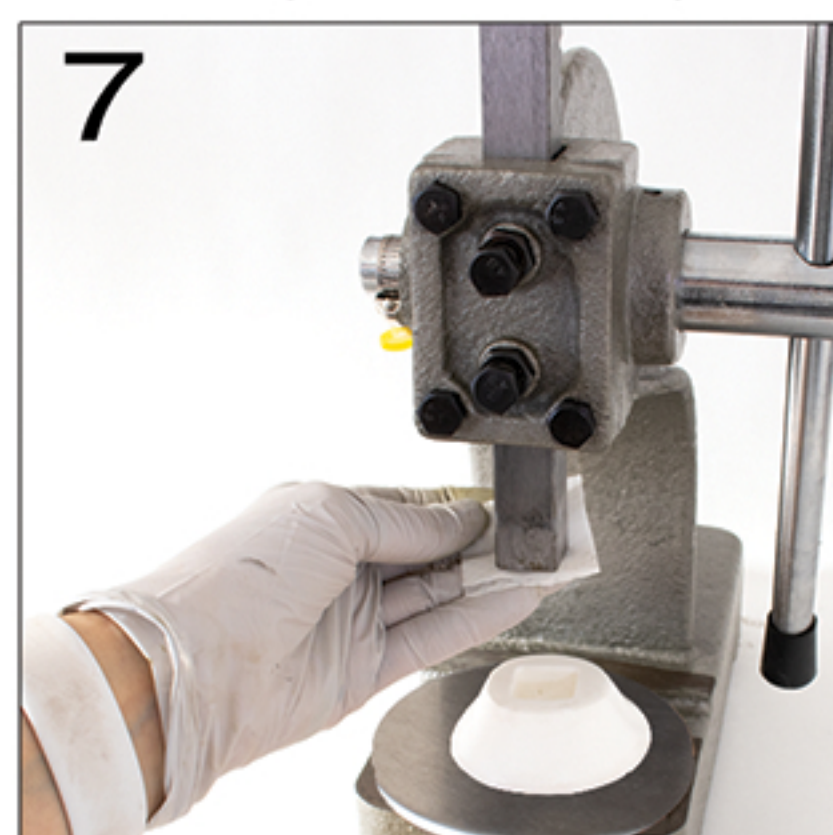
Wipe the platform with alcohol wipe to remove oils so the adhesive will stick better.



Let alcohol dry then affix the 3 adhesive strip tapes then peel off the red plastic covers.



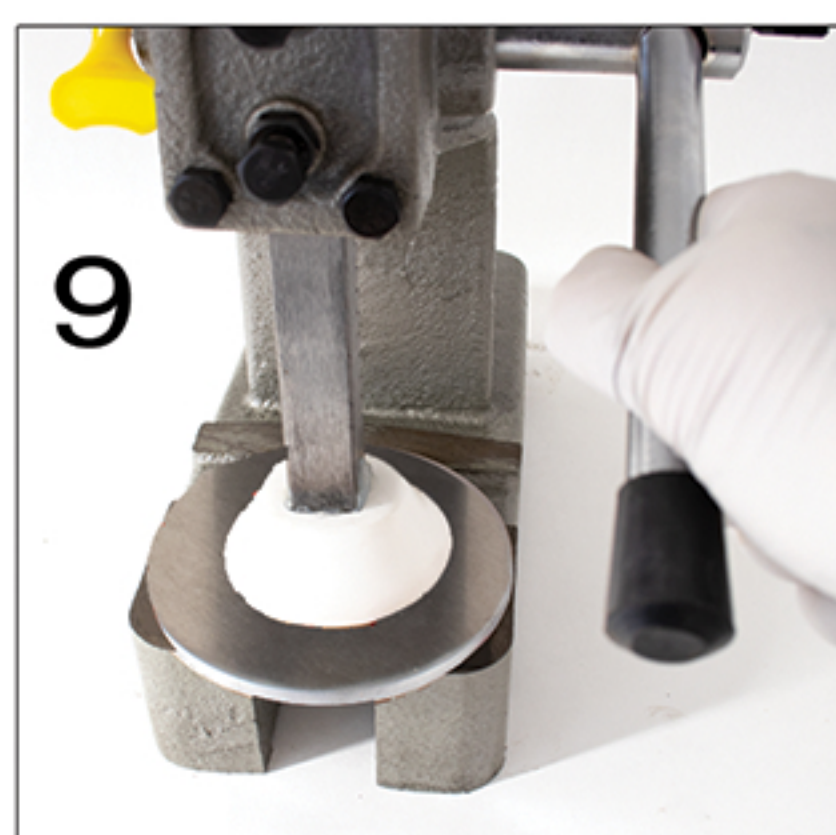
Center the Base Plate under the ram -- the adhesive is strong -- and PRESS.



Use the second alcohol wipe to clean the end of the ram on all sides and bottom.



Mix the epoxy and scoop mixture into well of Stomper. You have 3 - 5 minutes working time max before the epoxy starts to cure.

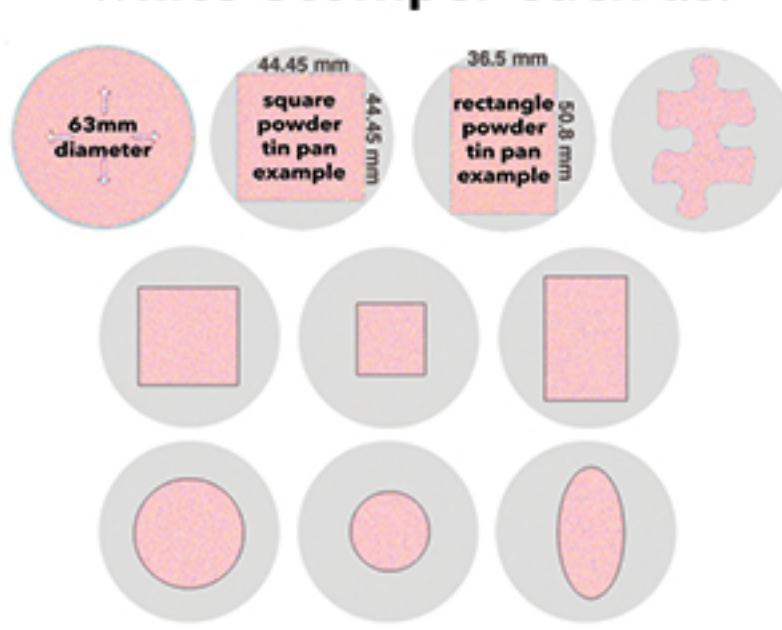


Use the lever arm to push the ram **FIRMLY** into the Stomper. Let it cure overnight.



Affix The Powder Press sticker onto the side. Time to chill. You are the proud owner of **The Powder Press!**

Press any size pan that fits under the 63mm diameter white Stomper such as:



**SCAN FOR
ASSEMBLY HELP
VIDEO**

OK, time to BOLT! →

* HOT TIP! *

That cushy shelf liner available in rolls at stores like Target, CVS, or Dollar Stores make great non-slip surface protection under **The Powder Press** (bolting is still also recommended).

Watch Assembly & Tutorial Videos:
ThePowderPress.com/video.html



**share the love!
#ThePowderPress**

ThePowderPress.com

support@ThePowderPress.com | ph/text 323.640.0003

copyright (c) 2014-2021 ThePowderPress.com - all rights reserved - Patent Pending

FOLLOW RECOMMENDED PRECAUTIONS AND SAFE OPERATING PRACTICES PROVIDED WITH YOUR ARBOR PRESS

The Powder Press assumes no responsibility for injury, damage, accidents, or misuse, and shall in no event be liable for death or injuries to persons or property, arising from the use of this product.

TPP 3rd GEN



INSTRUCTIONS + INFO

SAVE THIS MANUAL

The Powder Press Parts Kit

BOLTING you'll need

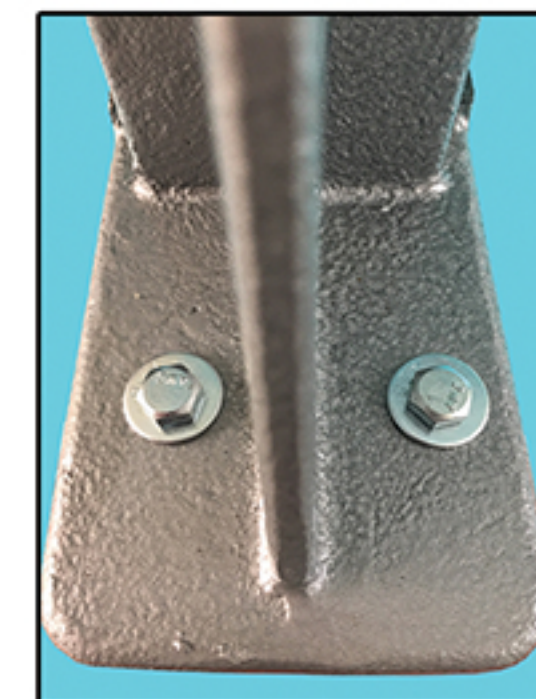
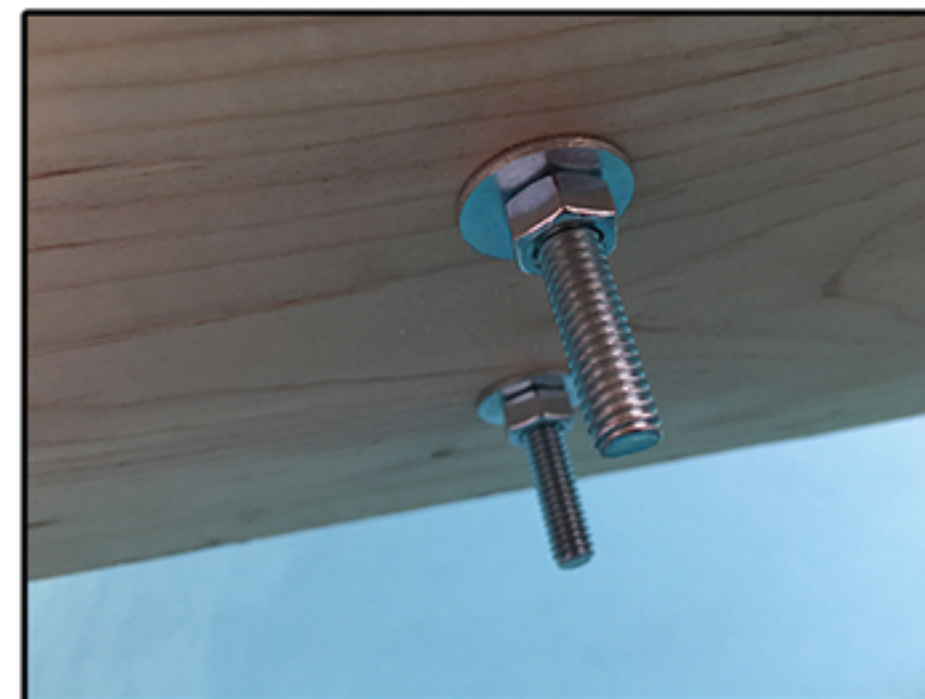
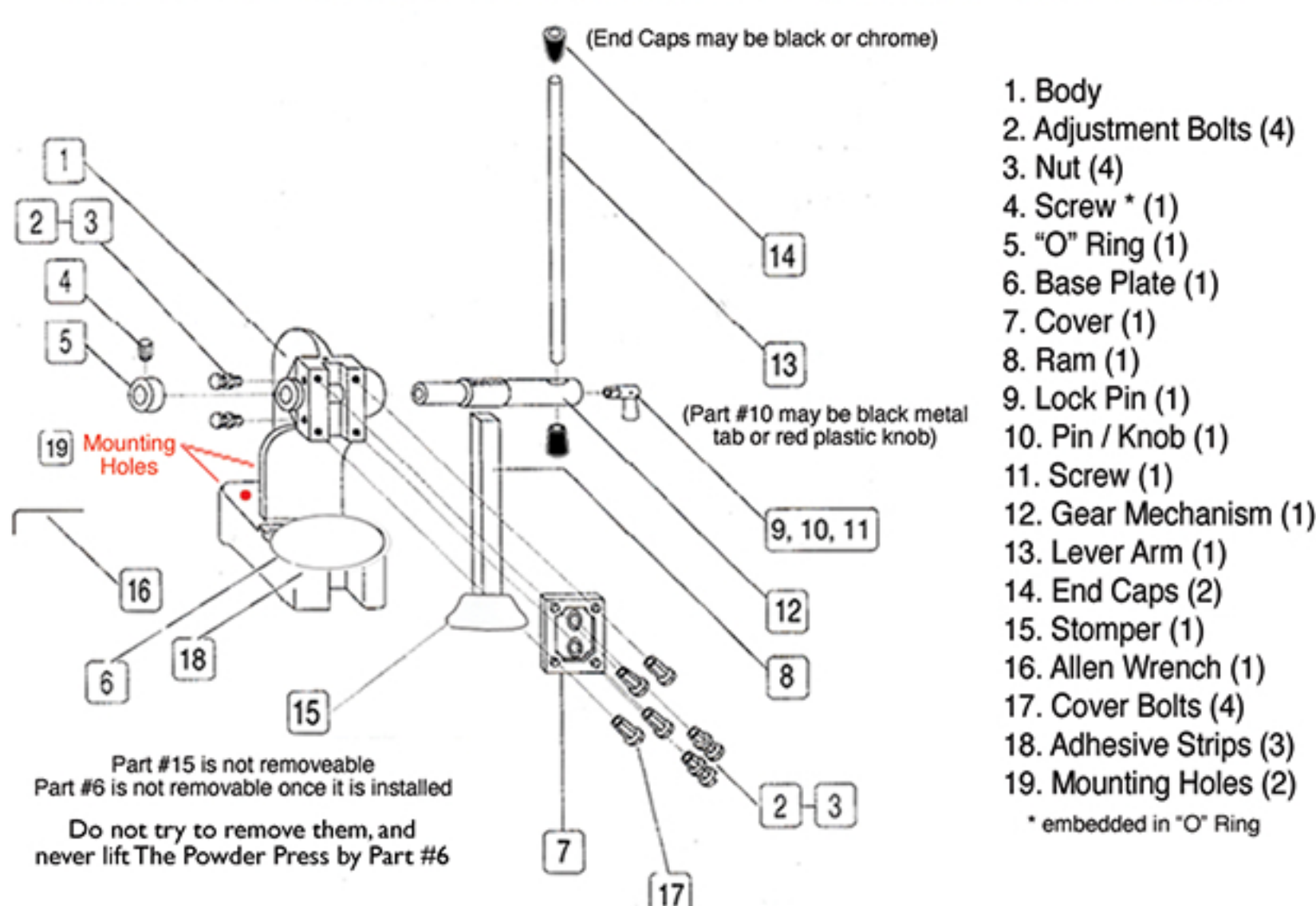
- standard drill
- 3/8" drill bit
- pen or Sharpie to mark holes
- drillable tabletop



Bolt your Powder Press - RECOMMENDED

1. Determine the desired location of **The Powder Press**, such as a wood tabletop or workbench
2. Mark the drill holes using a pen or Sharpie inserted down through the holes in the back of the arbor press
3. Drill the two holes with 3/8 inch (.375) drill bit
4. Position arbor press over the holes and slide the bolts into the holes. A set of washers go above and below your arbor press as shown in the picture left
5. Tighten the bolts underneath your surface and you are ready to use **The Powder Press**

Get to know The Powder Press



OPERATION & CARE

The Powder Press is pretty self-explanatory, but here is the detailed low-down of everything Powder Press

The Powder Press *press powder in no time flat!*

ADJUSTMENTS

1. Determine if you will need a moderate or large amount of leverage for the powder you are working with.
2. Loosen the LOCK PIN or RED KNOB depending on the version you have (#9) by turning it. This will allow you to adjust the length of the LEVER (#13).
3. Adjust the length of the LEVER to suit your needs. If a large amount of leverage is needed, lock the LEVER in the extended position. If a moderate amount of leverage is needed, position the LEVER in the middle of the Gear (#12).
4. Turn the LOCK PIN or KNOB (#9) to secure the LEVER Assembly and tighten the Lever Arm.
5. The four Adjustment Bolts (#2 & #3) can be used to increase or decrease the pressure against the Ram, to avoid it from jiggling. Overtightening can cause the Ram to not be able to move, however.
6. As you work with **The Powder Press** you will find the settings you like best for the powder you are working with, and your own personal preferences.

SCAN FOR VIDEO



Watch Assembly & Tutorial Videos:
ThePowderPress.com/video.html

ThePowderPress.com

USING

1. Raise the RAM (#8) up by turning the LEVER (#13).
2. Place the tin pan you want to press onto the BASE PLATE (#6).
3. Turn the LEVER to lower the RAM (#8) until the bottom of the STOMPER (#15) makes contact with the top of your pressing tile.
4. Place downward pressure on the LEVER to press the powder down.
5. Raise the RAM with the LEVER, then remove the tin pan.

CARE

1. Clean the underside of the STOMPER (#15) and the metal BASE PLATE (#6) with mild cleaner and a soft cloth (or baby wipes) between jobs. Do not use abrasive cleansers.
2. Use a soft damp cloth to clean the BODY (#1) of **The Powder Press** when needed, then dry thoroughly with a soft dry towel.
3. There is protective oil on the RAM and GEAR parts to keep things moving smoothly - do not clean that oil off. This oil is normal and necessary.
4. Feel free to occasionally squirt a small amount of oil such as WD-40 into the RAM well and GEAR opening to keep it moving smoothly.
5. Do not submerge in water - the cast iron body could rust.



share the love!
#ThePowderPress

support@ThePowderPress.com | ph/text 323.640.0003

copyright (c) 2014-2021 ThePowderPress.com - all rights reserved - Patent Pending

FOLLOW RECOMMENDED PRECAUTIONS AND SAFE OPERATING PRACTICES PROVIDED WITH YOUR ARBOR PRESS

NEVERknead assumes no responsibility for injury, damage, accidents, or misuse, and shall in no event be liable for death or injuries to persons or property, arising from the use of this product.