

PRODUCT MANUAL

MODEL#U3070100921
U3070100922

! ATTENTION! PLEASE READ THESE INSTRUCTIONS BEFORE USING THIS DEVICE

PRODUCT MANUAL



NOTICE:

If your package is missing parts or you are having issues with assembly, please call us directly or message us, Our customer service team will address any questions or concerns you may have. Have this manual open and ready for reference.





SAFETY


To reduce risk of injury when assembling & using the shampoo basin, follow these precautions:


- Read all of these instructions before assembling and using your shampoo basin.
- It is helpful to have 2 people assemble and turn the shampoo basin upright after assembling.

PARTS & FEATURES OF CABINET

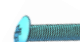
 Threaded pin X28

 Eccentric wheel X28

 L-Screw X24

 Wooden pin X4

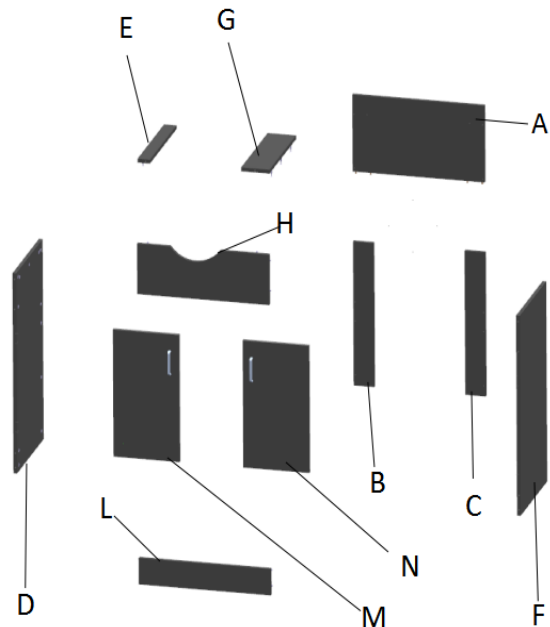
 Handle X2

 Bolt X4

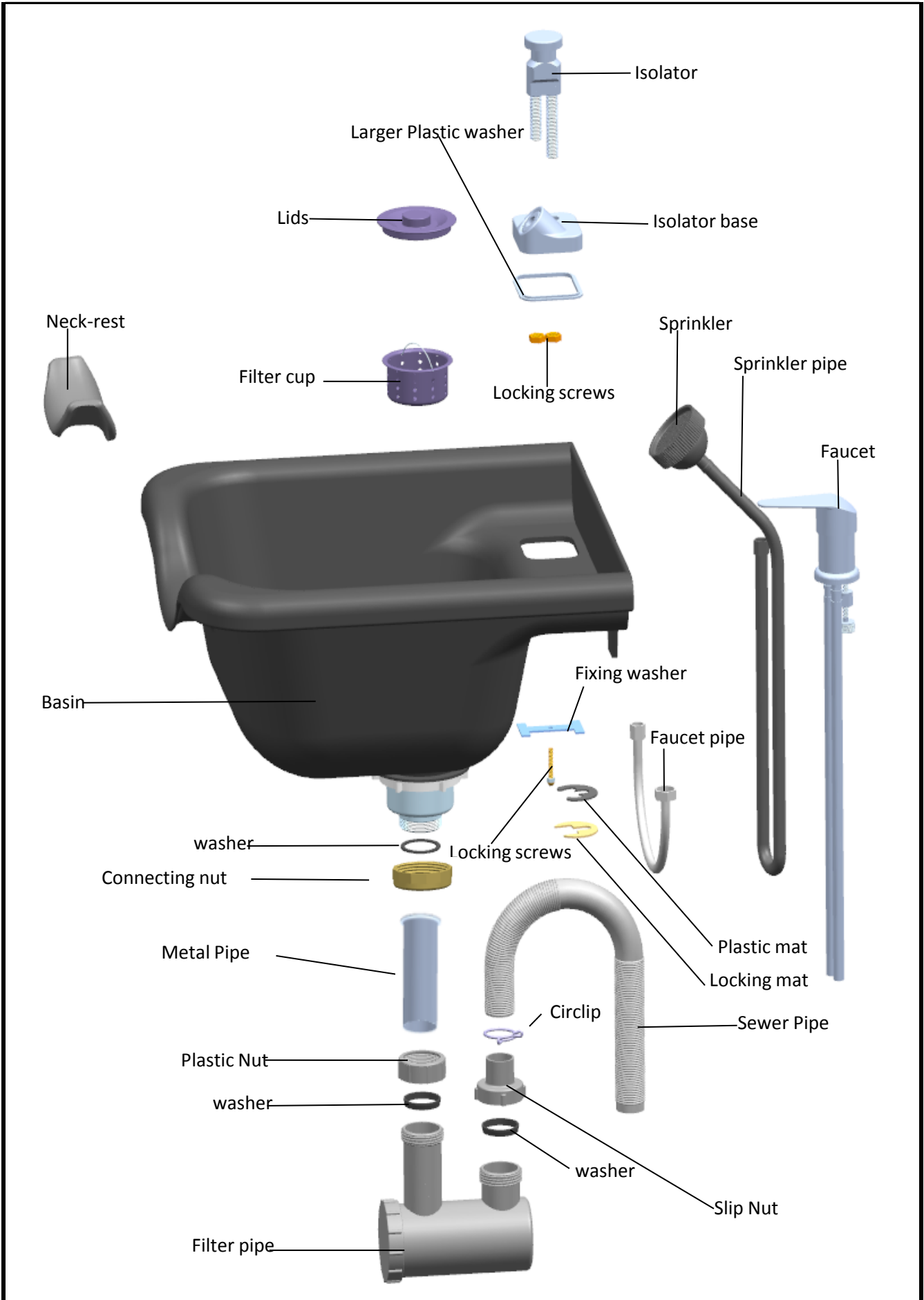
 Hinge X4

 M-Screw X3

 sheet iron X1



PARTS & FEATURES OF BASIN

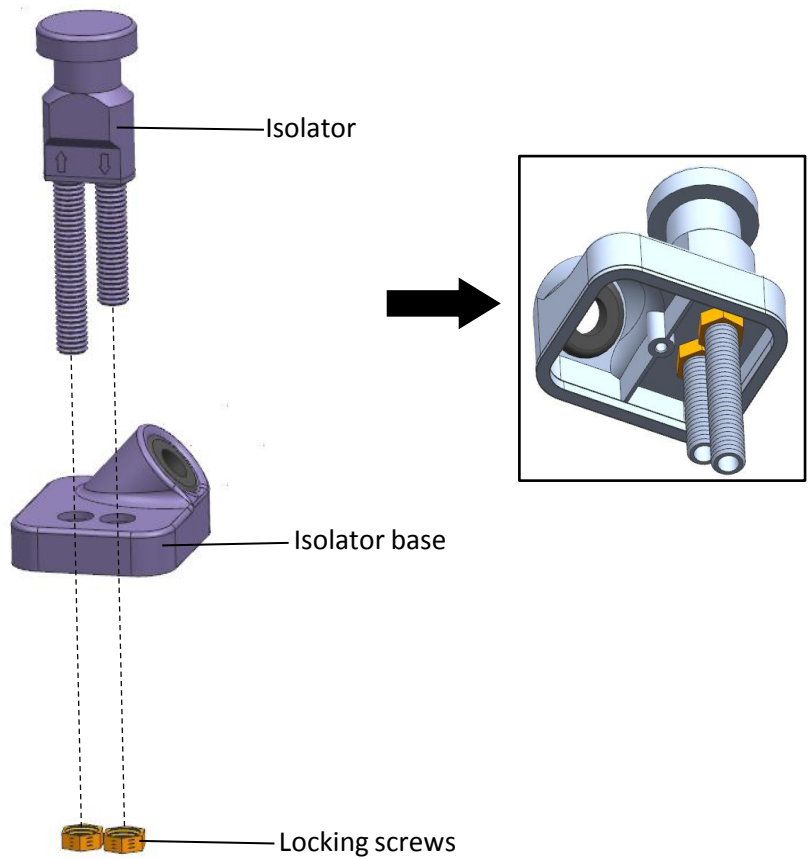


First:Install the Isolator to the Isolator base

Step 1 .Remove the locking screws which pre-fixed in the Isolator .

Step 2 . Install Isolator to the Isolator base by 2 locking nut .

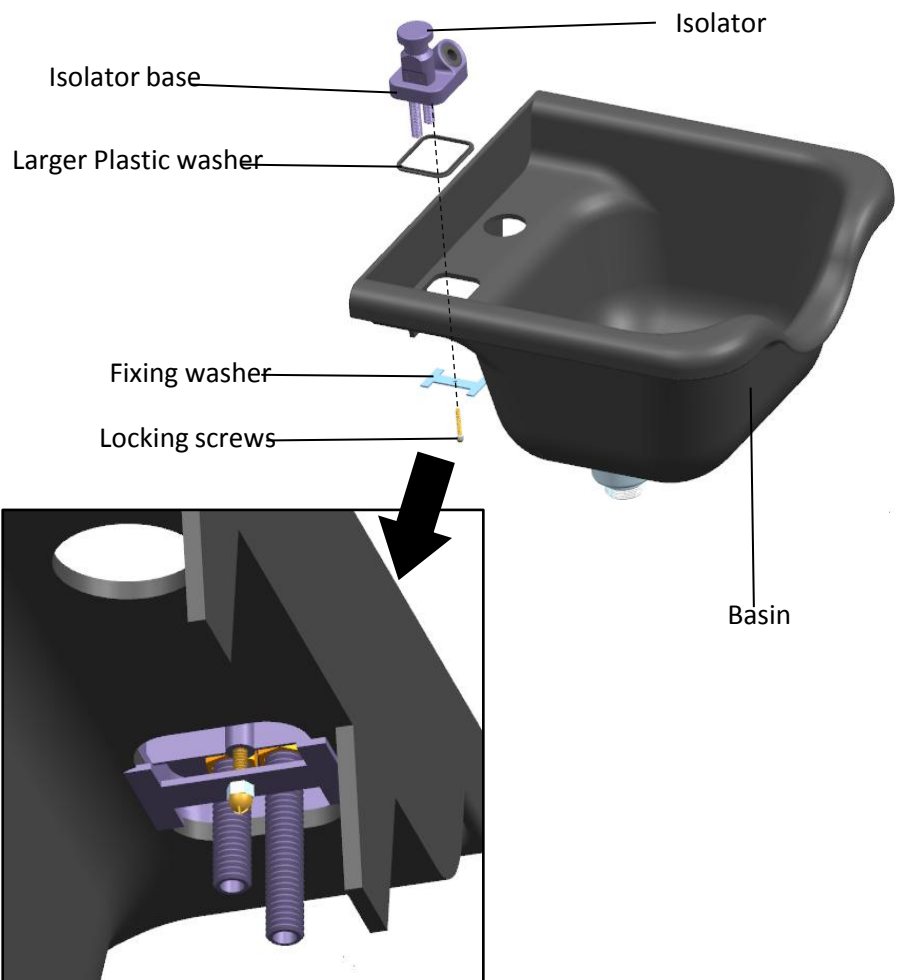
Please follow up the diagram beside



Second:Install the isolator base to the base

Step 1 .Install the isolator base to the basin with the larger plastic washer, fixing washer and locking screw.

Please follow up the diagram beside

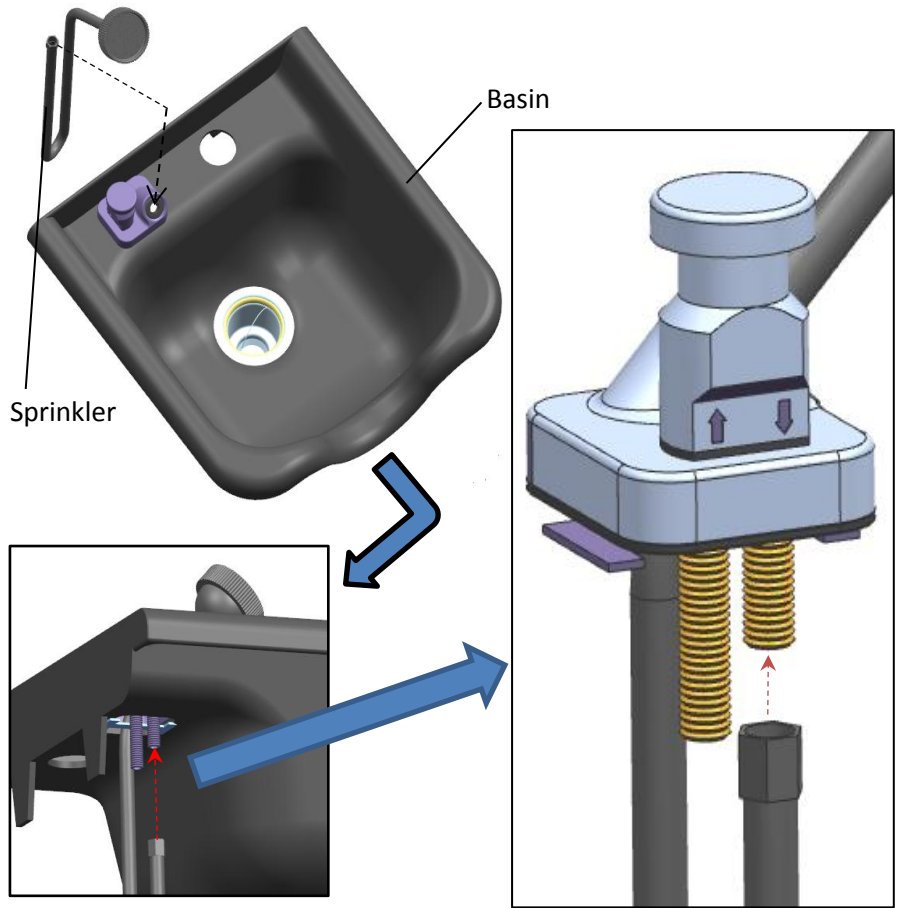


Third: Install the sprinkler pipe to the isolator base

Step 1 .Insert the sprinkler pipe into the hole of the isolator base.

Step 2 .Connect the end of sprinkler pipe with the outlet of the isolator .

Please follow up the diagram beside



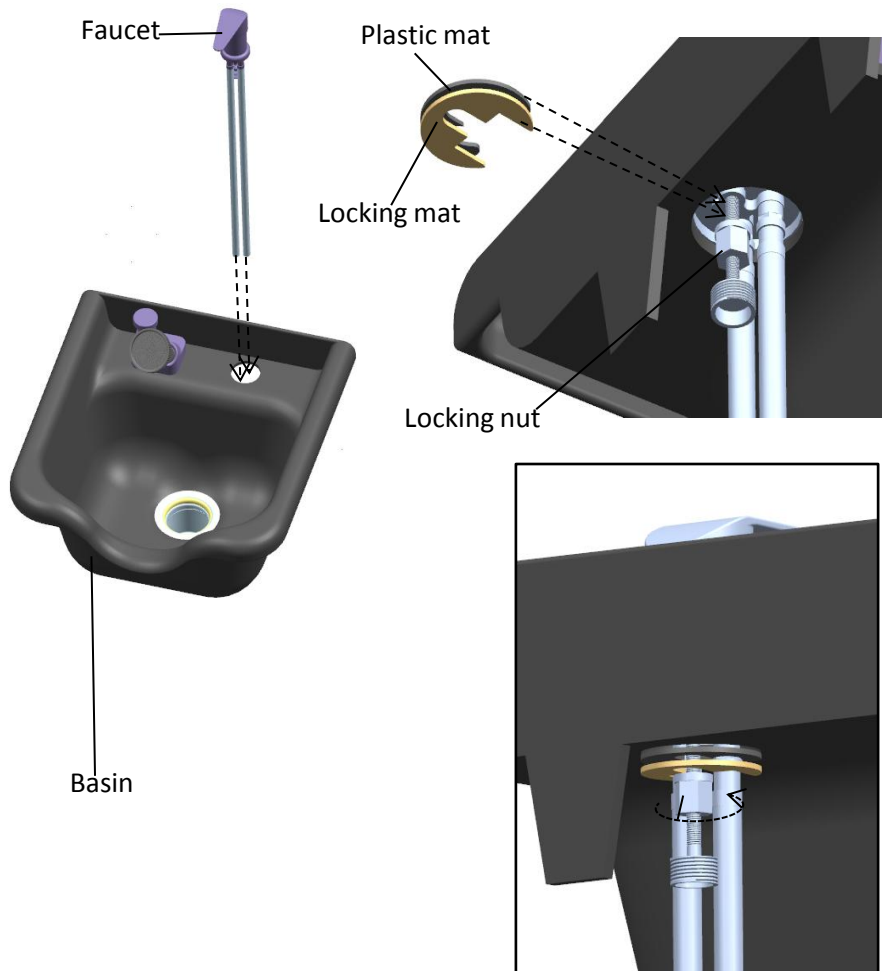
Fourth: Install the Faucet to the basin

Step 1 .Insert the Faucet into the hole of the basin.

Step 2 .Place the plastic mat and locking mat to the bottom of the hole .

Step 3 .tighten the locking nut of the faucet .

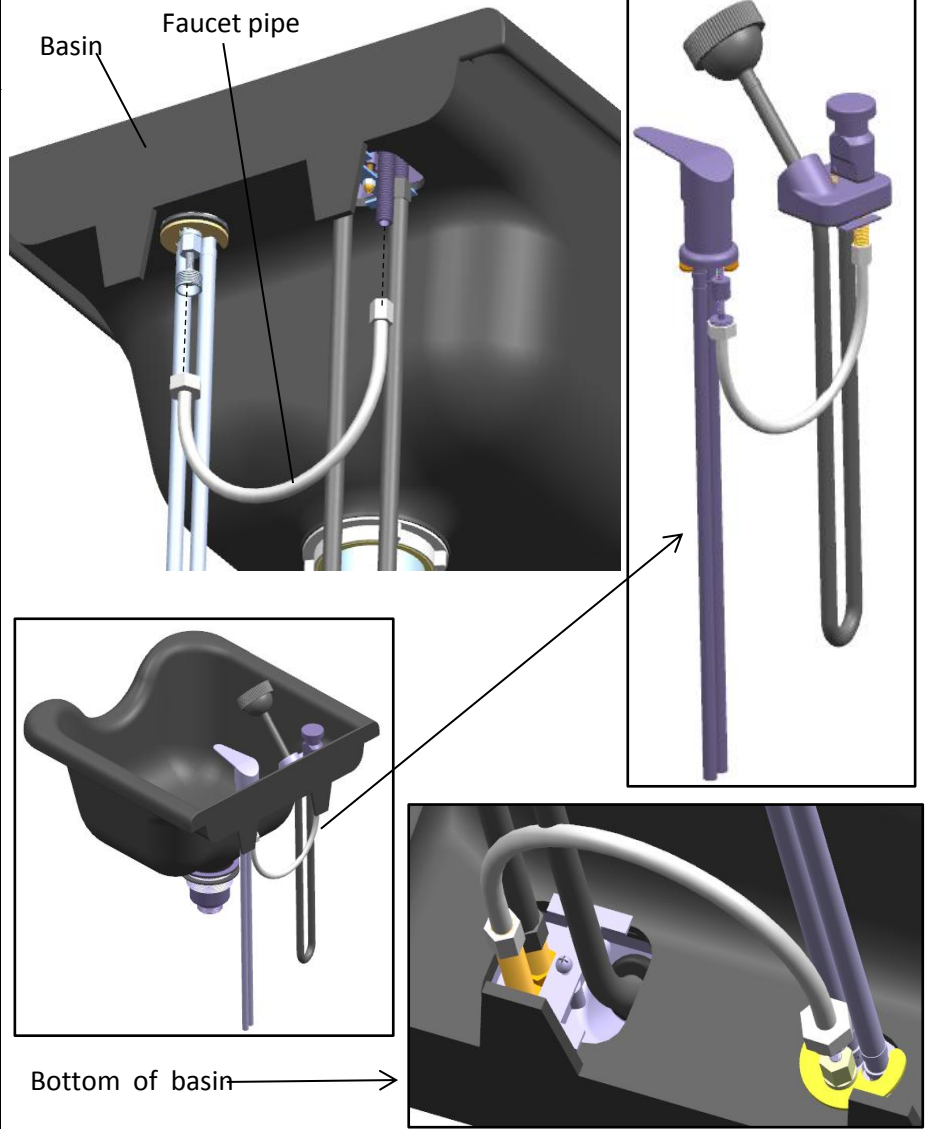
Please follow up the diagram beside



Fifth: Install the Faucet pipe to the basin

Step 1 .Connect the faucet and isolator with the faucet pipe .

Please follow up the diagram beside

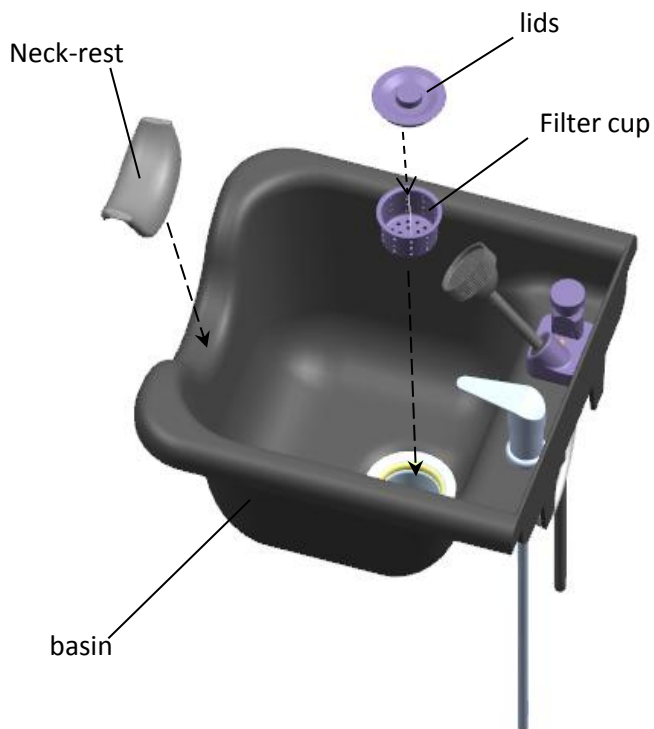


Sixth: Install the Neck-rest, lids and Filter cup to the basin

Step 1 .Place the neck-rest to the groove of the basin.

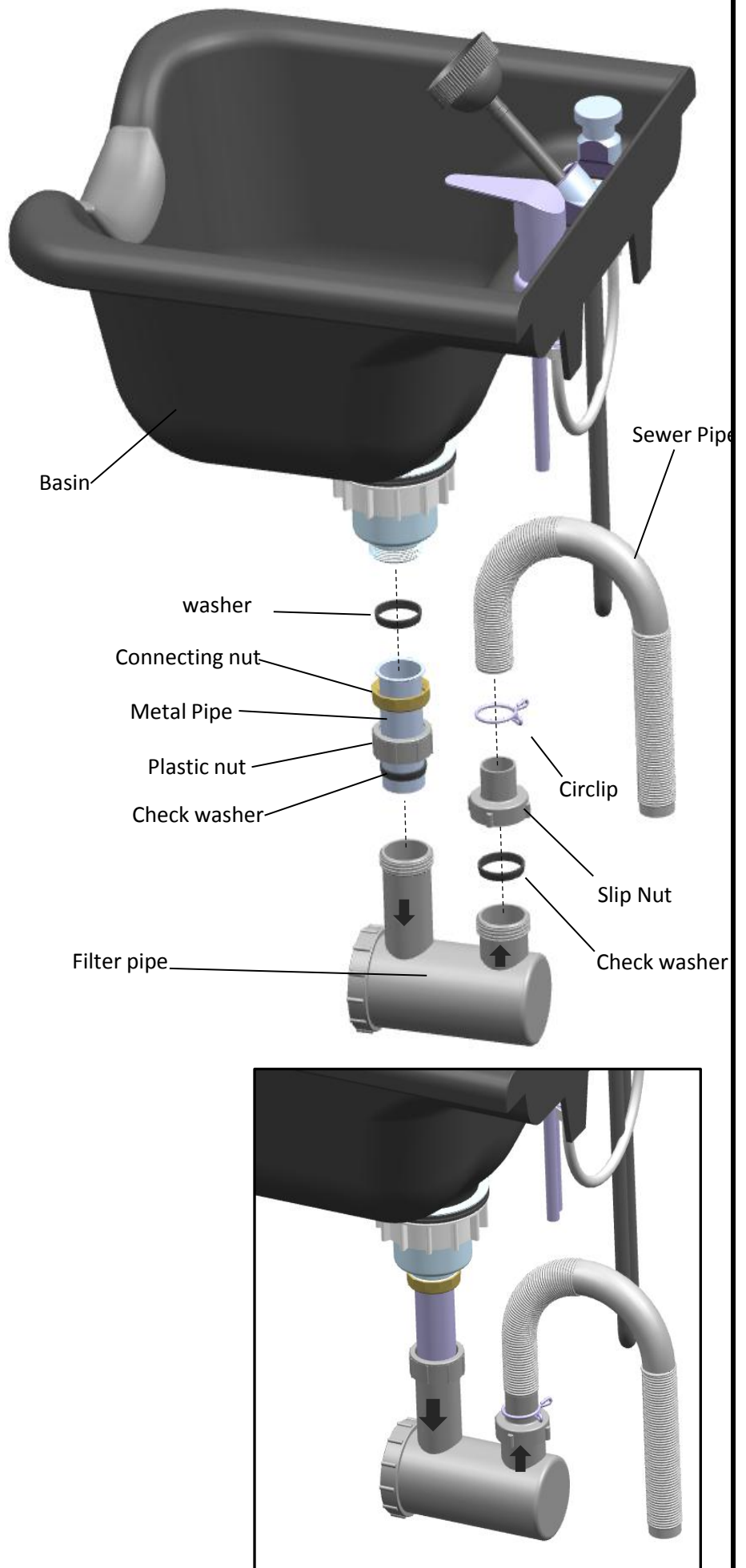
Step 2 .Place the lids and Filter cup into the outlet hole of the basin .

Please follow up the diagram beside



Seventh :Install the Filter pipe and sewer pipe to the basin

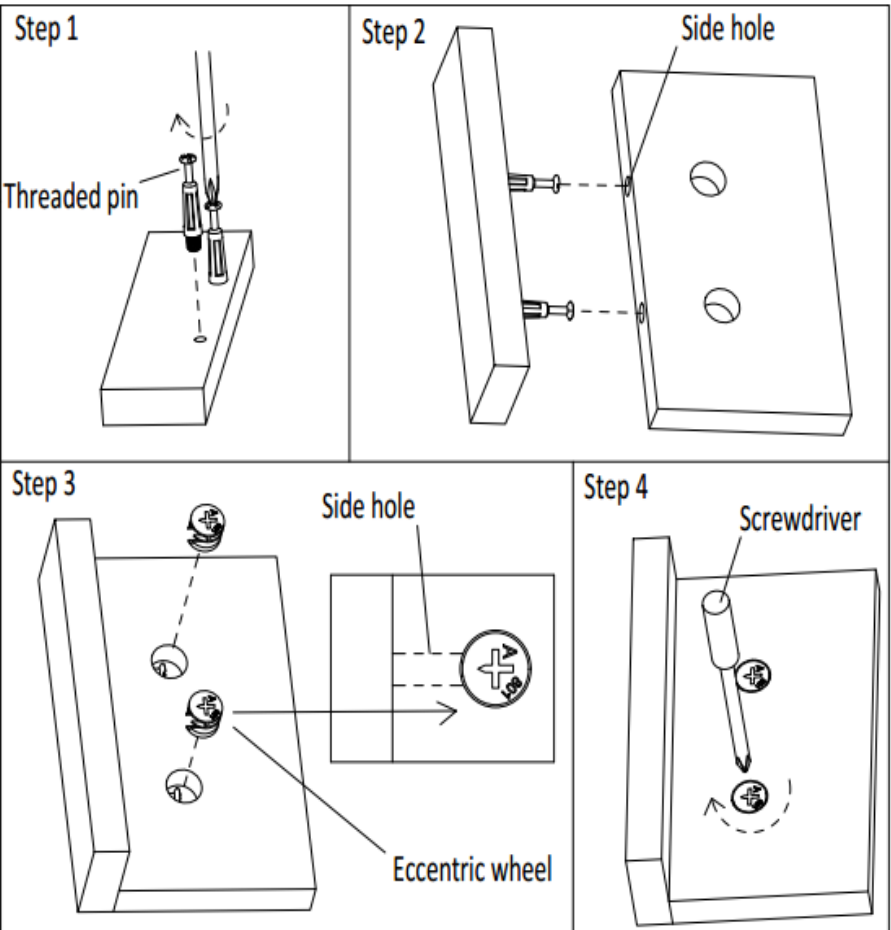
Step 1 : Put the connecting nut, plastic nut and check washer onto the metal pipe .
 Step 2 : Install the metal pipe to the bottom of the basin with the washer and connecting nut which puted onto the metal pipe.
 Step 3 :Connect the Filter pipe to Metal Pipe by the Plastic nut which puted onto the metal pipe.
 Step 4 : Install the Slip Nut and a check washer to the Filter pipe .
 Step 5 : Install the Sewer Pipe to the slip nut with the circlip .
Please follow up the diagram beside



Installation Method for Connecting boards

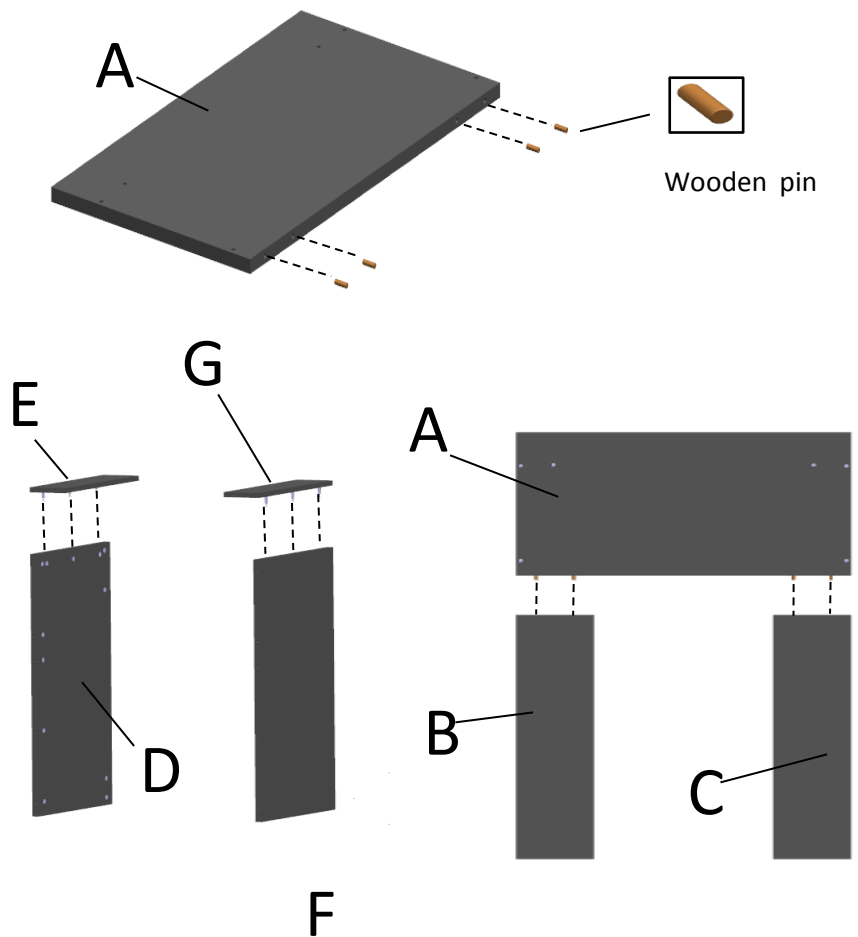
Step 1 : Install threaded pins into the reserved plastic thread holes by screwdriver .
 Step 2 : insert the installed threaded pins into the side holes one to one .
 Step 3 : Install Eccentric wheels into the larger holes of the board ,The arrow groove on the surface of the eccentric wheel must point to the side hole .
 Step 4 : tighten them by cross-head screwdriver.
Please follow up the example beside.

Example:



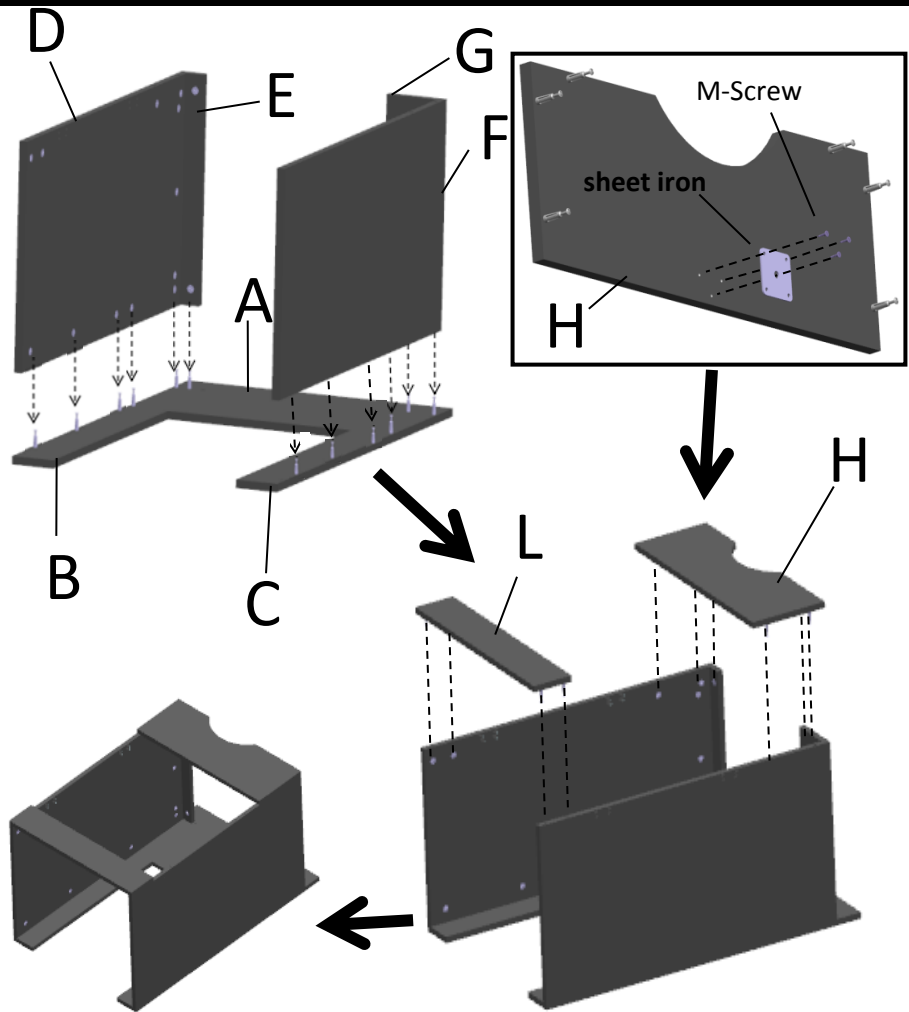
First : Connect the wooden boards follow up the diagram beside

Step 1 : Connect B and C with A by 4 wooden pins.
 Step 2 : Connect E with D by 3 threaded pins and 3 Eccentric wheels. Connect G to F by 3 threaded pins and 3 Eccentric wheels.
Please follow up the diagram beside



Second :Connect the wooden boards follow up the diagram beside

Step 1 : Connect D&E to A&B&C by 6 threaded pins and 6 eccentric wheels.
 Step 2 :Install the sheet iron to The inner side of the H with 3 M-screws .
 Step 3 :Connect G&F to A&B&C by 6 threaded pins and 6 eccentric wheels.
 Step 4 : Install L and H to assembled boards by 10 threaded pin and 10 eccentric wheels.
Please follow up the diagram beside



Third : Installing the doors(D and F)

Step 1 :Install M to D by 12 screws and 2 hinges.
 Step 2 :Install handle to M by two bolts.The F is installed the same way .
 Step 3 :Put the basin at the top of the cabinet .
Please follow up the diagram beside

