



transmatic

Heat Seal Machines



TS 2M



TS 2M

I	Dimensione piastra	50x40 cm
	Tensione alimentazione	230 V monofase
	Potenza max.	KW 2,2
	Consumo	KW/h 1,0
	Temperatura	40°-255° C
	Tempo regolabile	0-9999 sec.
	Pressione	0-600 gr/cm ²
	Peso netto	64 Kg

Pressa a caldo a funzionamento manuale con apertura a cassetto. Piastra termica superiore basculante per ottenere una pressione costante tra le due piastre. Regolazione elettronica del tempo e della temperatura. Piastre intercambiabili di differenti misure e accessorio per stampa cappellini in opzione.

UK	Dimension of the plate	50x40 cm
	Current	230 V
	Power consumption	KW 2,2
	Power consumption/h	KW/h 1,0
	Temperature	40°-255° C
	Time regulable	0-9999 sec.
	Pressure	0-600 gr/cm ²
	Net weight	64 Kg

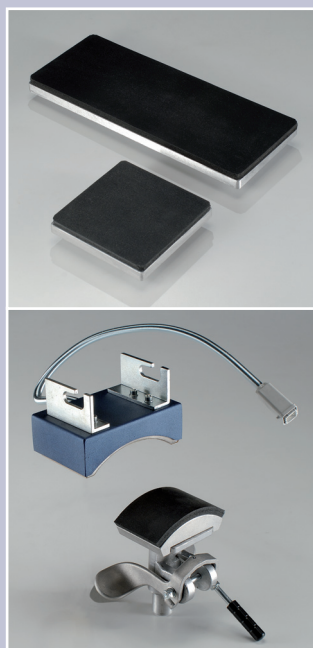
Manual heat press with draw system lateral opening. The top plate is not fixed in a rigid manner to ensure an homogenous pressure between the upper plate and the bottom plate. Electronic time and temperature regulation. Exchangeable under plate with rapid screw fitting. Suitable for any type of application. Possibility to have the cap accessory as extra option.

D	Abmessungen des Plateaus	50x40 cm
	Spannung	230 V
	Anschlusswert	KW 2,2
	Anschlusswert/h	KW/h 1,0
	Temperatur	40°-255° C
	Zeiteinstellung	0-9999 Sek.
	Anpressdruck	0-600 gr/cm ²
	Gewicht netto	64 Kg

Manuelle Thermopresse mit Schubladensystem. Freihängendes Oberplatte für eine immer homogene Druckleistung. Elektronische Zeit- und Temperaturregulierung. Einfache Druckregulierung auf dem Haupthebel. Geeignet zur Applikation jeder Art Etiketten. Zubehör für Kappendruck.

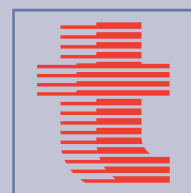
F	Dimension de la plaque	50x40 cm
	Voltage	230 V
	Consommation totale	KW 2,2
	Consommation totale/h	KW/h 1,0
	Température	40°-255° C
	Régulations du temps	0-9999 sec.
	Pression	0-600 gr/cm ²
	Poids net	64 Kg

Presse à chaud manuelle à tiroir. Plaque supérieure basculante qui permet d'avoir une pression constante. Régulation électronique du temps et de la température. La plaque inférieure est interchangeable. Adapte pour l'application de tous types d'etiquettes à chaud. Possibilité d'avoir l'accessoire pour les casquettes en option.



I dati e le caratteristiche tecniche sono puramente indicativi e soggetti a variazioni senza obbligo di preavviso.

All data and technical features are purely indicative and subject to changes without prior notice.



transmatic s.r.l.

Via Enzo Ferrari, 9/11/13
20824 Lazzate (MB) - ITALY
Tel. +39 02 96329816 - +39 02 96329024
Fax: +39 02 96728422
e-mail: info@transmaticsrll.com
web: www.transmaticsrll.com