

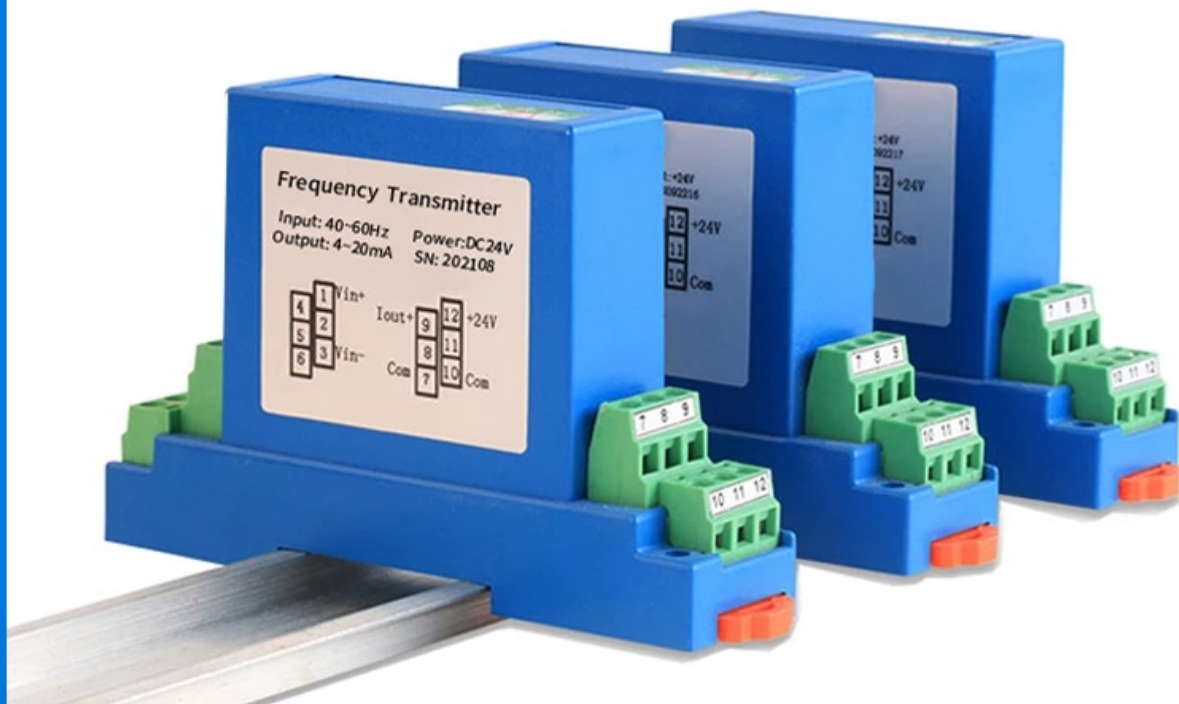
40-60hz 45-55hz Frequency Transducer High Frequency Transmitter with input 0-6KHz-100KHz,output 0-10V 4-20mA



◆ IN: 0~100KHz

◆ OUT: 4~20mA, 0~5V, 0~10V, 1~5V

◆ PWR: DC24V



Frequency Transducer

40-60hz 45-55hz Frequency Transducer High Frequency Transmitter with input 0-6KHz-100KHz,output 0-10V 4-20mA

NOTES:

The frequency transmitter we can make any range within 50-100KHz.

If you need other frequency range, please contact me.

We can make special customization for you.

Product Description

1>>. Working principle: Linear photoelectric isolation principle

2>>. Usage: Used for isolation measurement of various waveform frequency signals from 50Hz to 100kHz.

3>>. Advantages: Better cost-performance, low power consumption, small volume, light weight, easy installation, perforation input and no insertion loss.

4>>. Application: Widely used in various measuring frequencies and places that need to be converted into frequency signals.

5>>. Full channel configuration, parameters customized.

Frequency Transmitter

0~100KHz available

Anti-interference, Anti-surge

Electromagnetic isolation



Technical Specifications

Product Parameters

| | |
|-----------------------|------------------------|
| Product name | Frequency transmitter |
| Input frequency range | 0~100KHz |
| Output signal | 4~20mA,0~5V,0~10V,1~5V |
| Power supply | DC12V,DC24V |
| Accuracy | 0.5%FS |
| Linearity | 0.5%FS |
| Response time | ≤200mS |
| Overload capacity | 200%FS,sustainable |
| Temperature drift | ≤500PPM/°C |
| Consumption current | ≤25mA |
| Insulation | 2.5K/50Hz,1min |
| Offset voltage | ≤20mV |
| Zero output | ≤0.15mA |
| di/dt follow | >50A/uS |
| Band width | DC ~20khZ |
| Working temp. | -10~+70°C |
| Storage temp. | -25~+85°C |

Product Features

Product Features

NO. 1 3 terminals reliable isolation, High precision

- Convert frequency signal into standard process signal

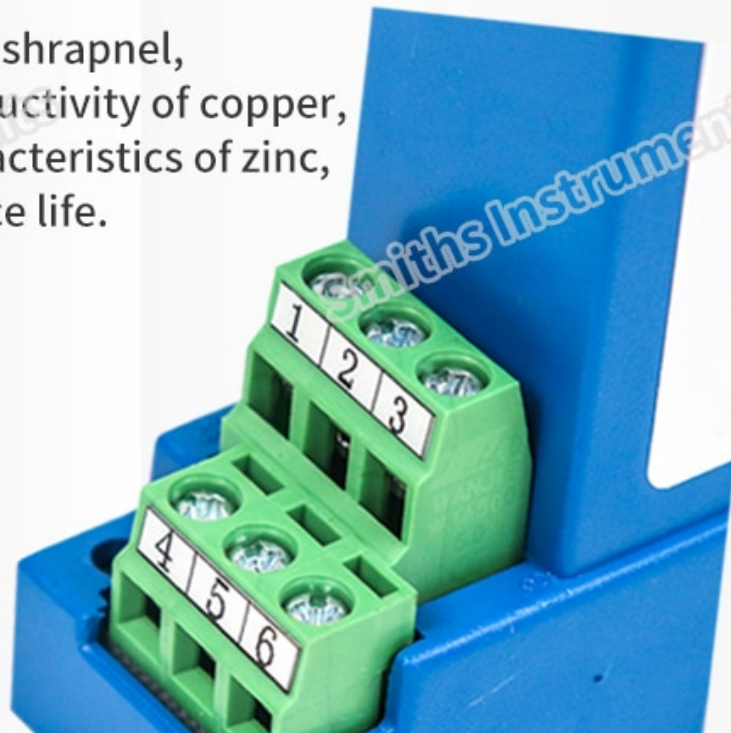
Input signal: 45-55Hz, 40-60Hz, 0-50Hz, 0-100Hz,
50-100Hz, 0-1KHz, 0-100KHz, Customized





NO. 2 Standard & Safety connecting terminals

- Using zinc & copper shrapnel, has both good conductivity of copper, anti-corrosion characteristics of zinc, lead to longer service life.



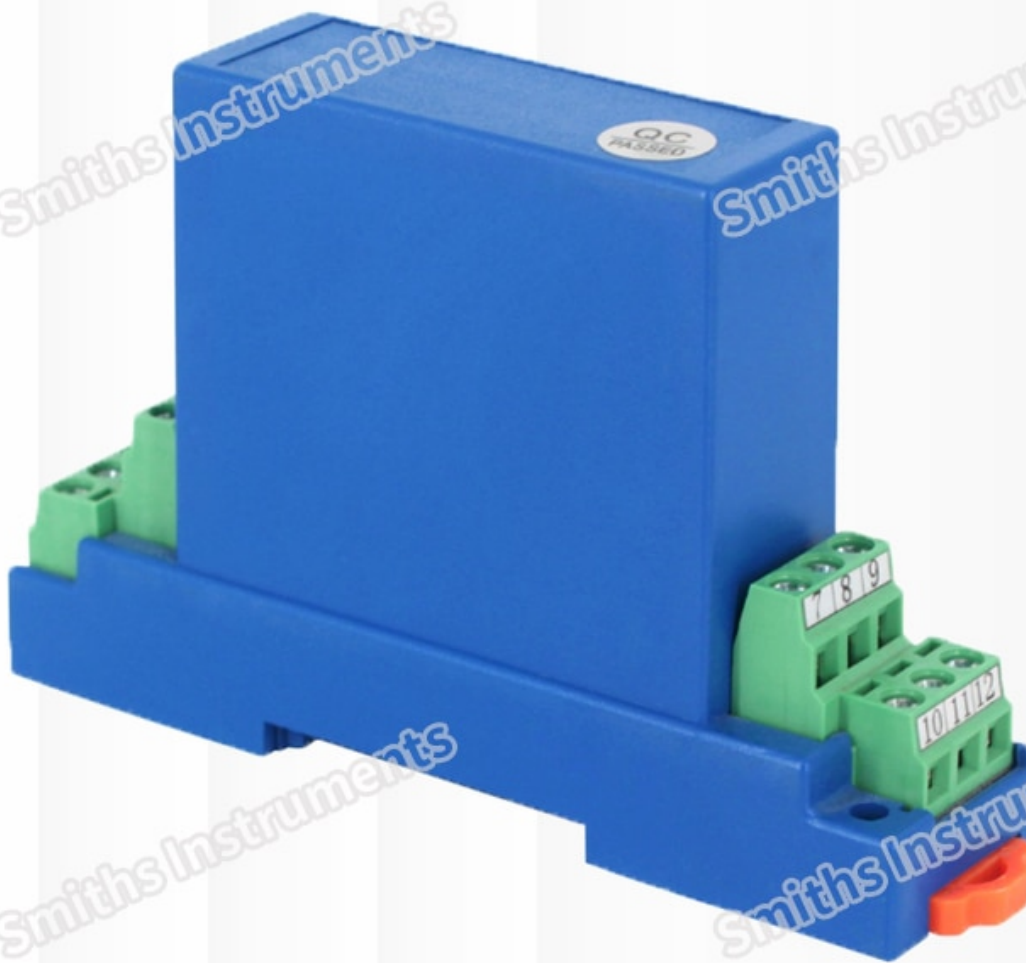
NO. 3 35mm standard DIN Rail installation

- 35mm standard DIN Rail installation, with retractable clamping strip, more convenient to install & easy to use.



NO. 4 Multiple protection

- Reverse connection protection, overvoltage protection & overcurrent protection.



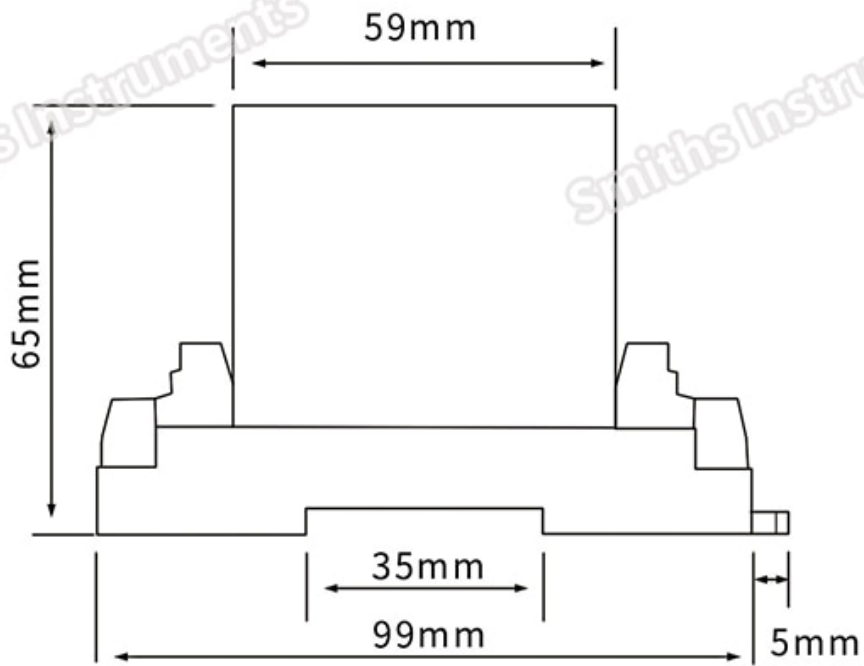
Product Selection

Product Selection

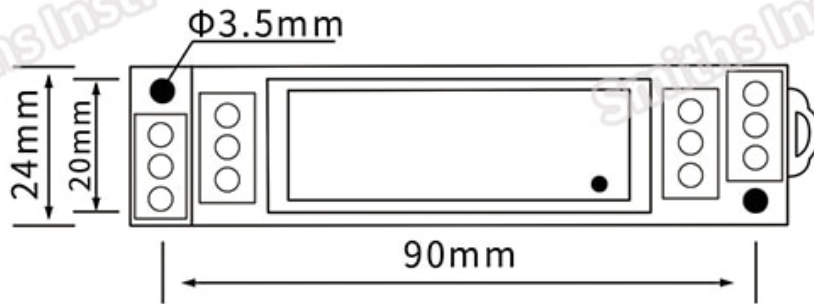
| | | | | |
|--|--------------|-------------|-------------------|-------------------|
| Model: ELFTB-7 | | | | |
| Input: | A1: 45~55Hz | A2: 40~60Hz | A3: 0~50Hz | A4: 0~100Hz |
| | A5: 50~100Hz | A6: 0~1KHz | A7: 0~100KHz | A8: Customization |
| Output: | O1: 4~20mA | O2: 0~20mA | O3: 0~5V | O4: 0~10V |
| | O5: 1~5V | O6: Relay | O7: Customization | |
| Power supply: | P1: DC12V | P2: DC24V | P3: AC220V | A4: Customization |
| ELFTB-7 A1 O1 P1 (Product function: ELFTB-7, input 45~55Hz, output 4~20mA, power supply DC12V.) | | | | |

Product Dimension

Product Dimension



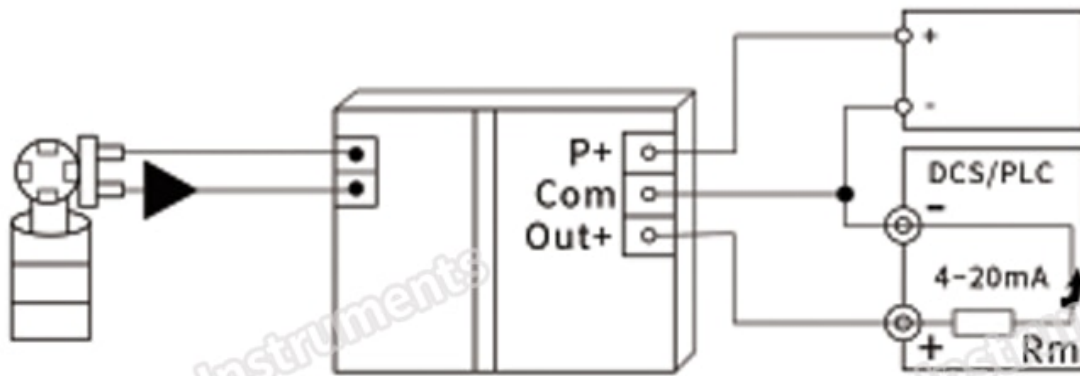
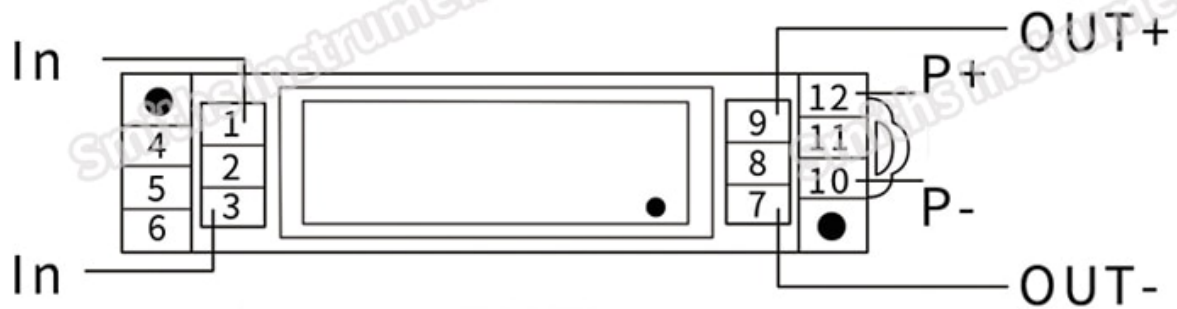
Front view



Top view

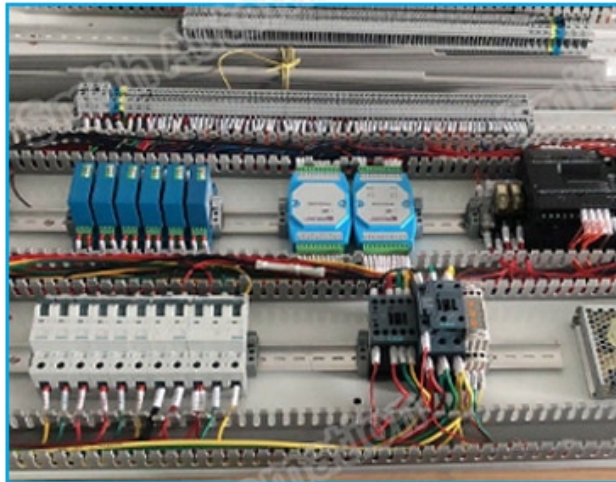
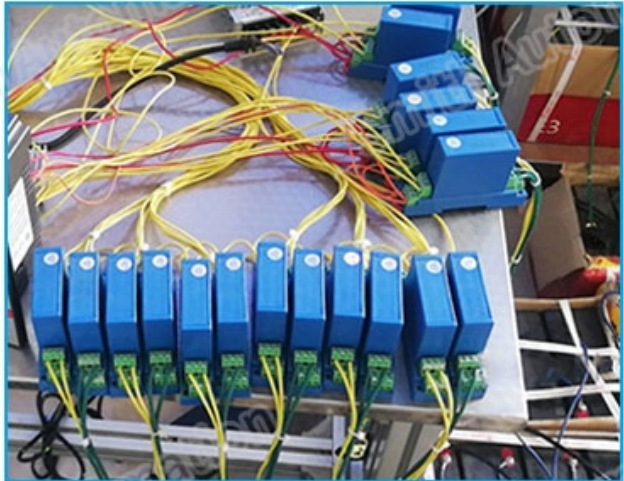
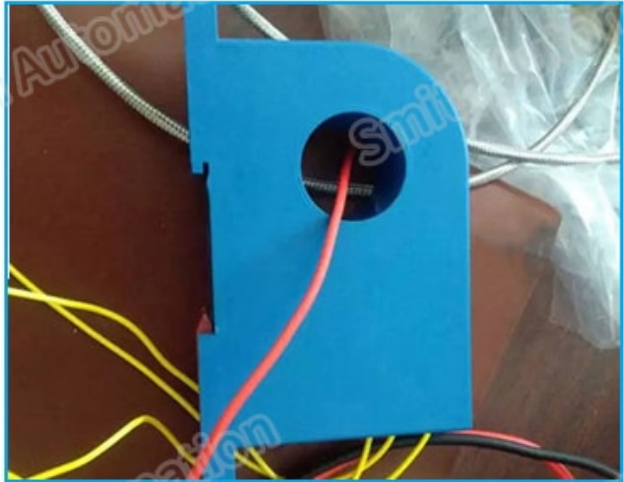
Wiring Diagram

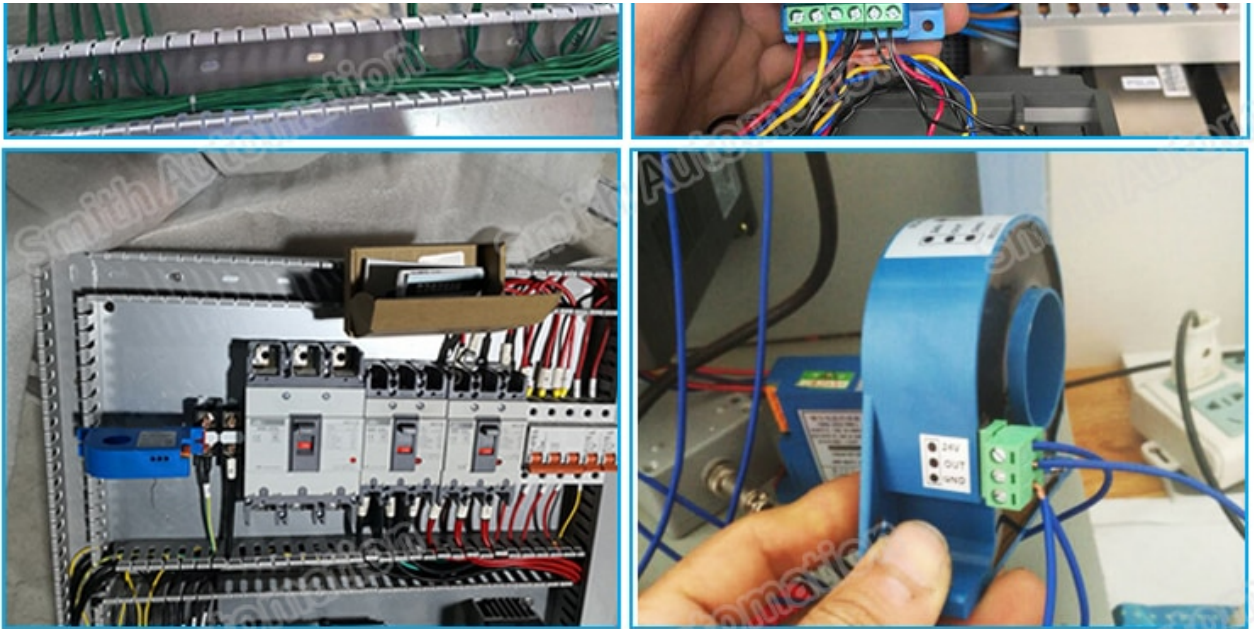
Wiring Diagram



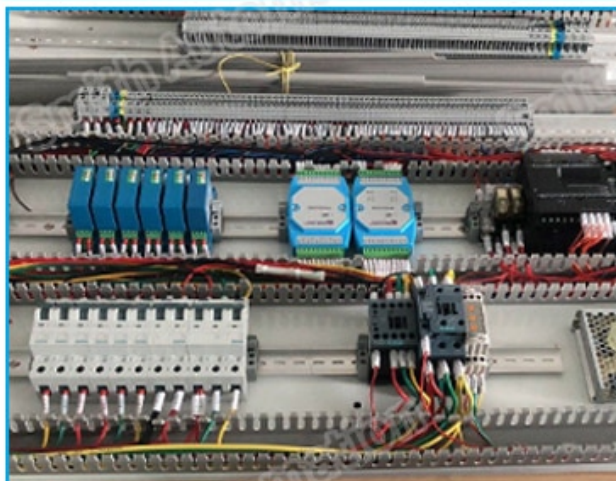
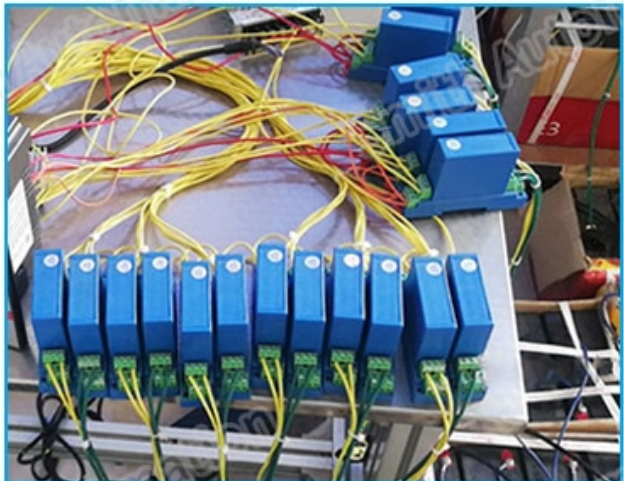
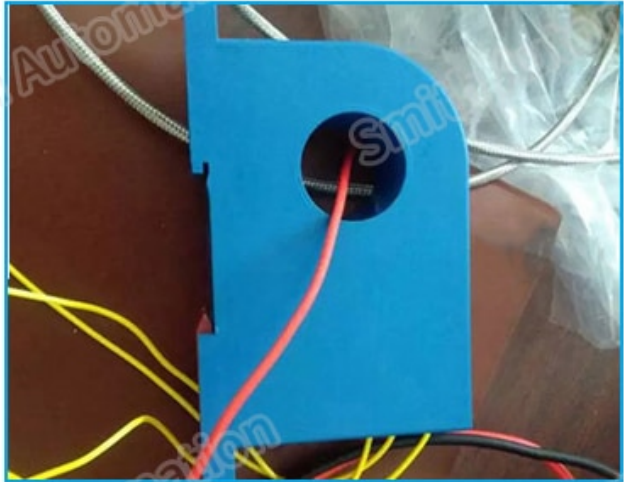
Product Application

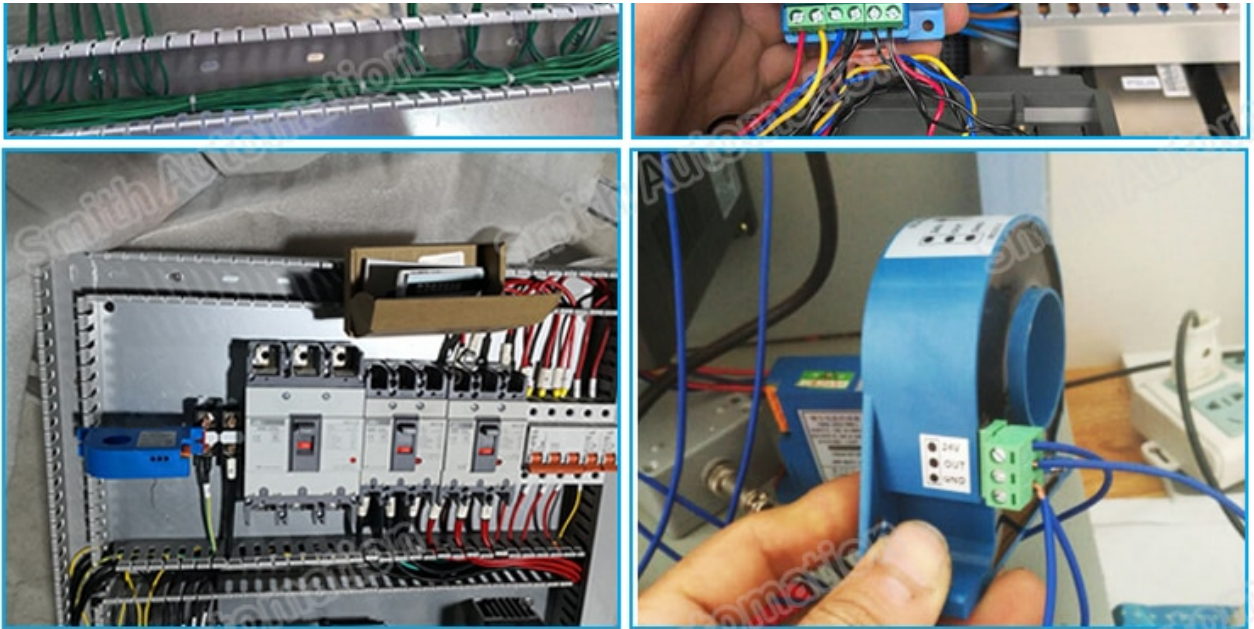
Product Application





Product Application

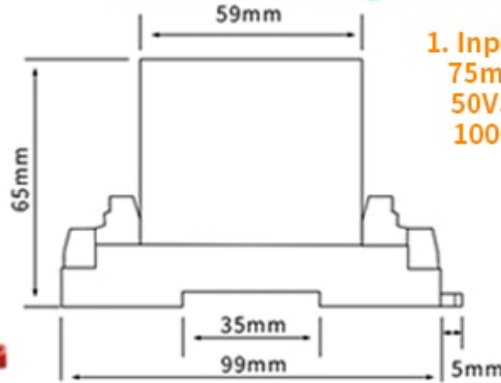




Various Models

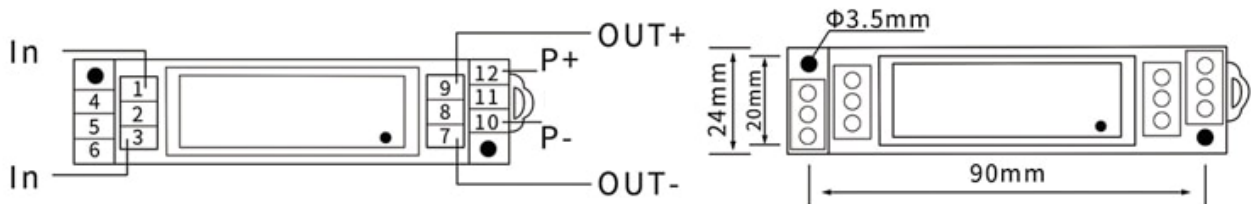
ELVTB-7

AC/DC Voltage Transducer



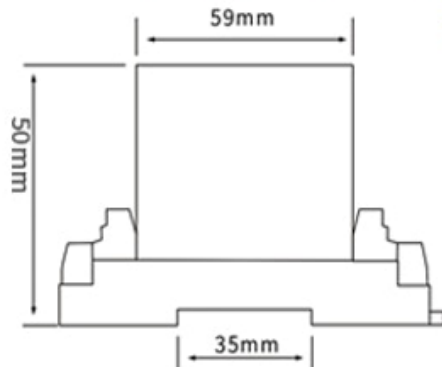
1. Input:
75mV, 1V,
50V, 100V,
1000V, 1500V

2. Output:
4~20mA
0~20mA
0~5V
0~10V
1~5V



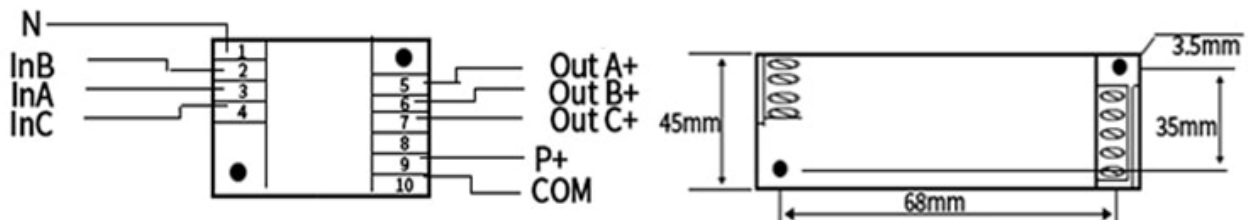
ELVT-3P1

3 phase Voltage Transducer



1. Input:
5V, 50V,
100V, 220V,
380V, 500V

2. Output:
4~20mA
0~20mA
0~5V
0~10V
1~5V



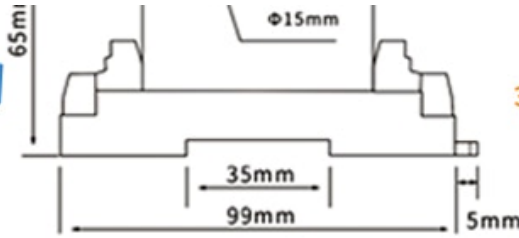
ELCT-14

Hall Current Transducer



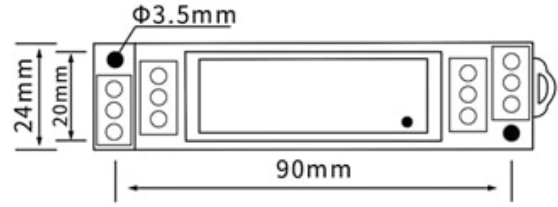
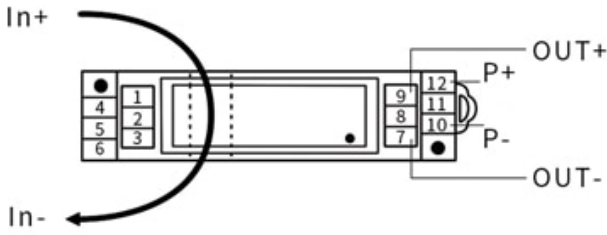
1. Input:
5A, 10A,
20A, 50A,
100A, 150A

2. Output:
4~20mA
0~20mA
0~5V
0~10V



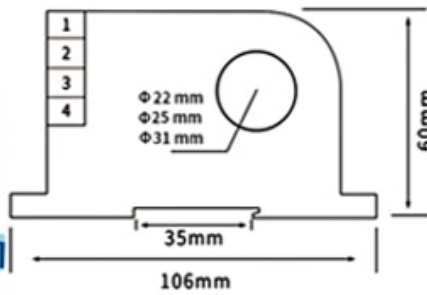
1~5V

3. Aperture diameter:
4mm
8mm
12mm
15mm



ELCT-10

Hall Current Transducer



1. Input:
5A, 20A,
50A, 100A,
400A, 500A,
600A, 800A

2. Output:
4~20mA
0~20mA
0~5V
0~10V
1~5V

3. Aperture diameter:
22mm
25mm
31mm

