







## Mandatory Safety

- Never use the product for the proposes other than listed on this manual.
- Read the instruction manual before using this product.
- Remove all the packaging before use.
- If the unit will not be used for an extended period, follow the clean and maintenance instruction to clean the unit before storage.
- "WARNING" contains important safety instructions. Be sure to follow these instructions.

## Warning

-  This device is not intended for use by persons with reduced physical or cognitive capacities without the necessary experience or knowledge, unless they have been trained to use the device correctly by a person responsible for their safety and have understood the risks involved.
-  Stop using the device immediately once it smoke, smell, unusual sounds or other anomalies occur.
-  Do not modify, fix or dismantle this product, as fire, electric shock or damage may occur.
-  When the product is at the end of its life, we recommend disposal at a collection point for the recycling of electrical and electronic equipment, rather than with household waste.
-  Please avoid dripping the essential oil onto the exterior of the product or onto furniture. If essential oil dripping accidentally occurs, wipe off immediately to avoid discoloration of the exterior of the product or the furniture.
- This product is not medical equipment. Directly inhaling the negative ion is not recommended.
- Not recommend using in a high humidity place as it might affect the function of the HEPA filter.
- Make sure to recharge the device once within 3 months, keep the device maintain a certain amount of battery or it might affect the battery quality.
- Keep the product away from the heat sources, high-pressure places and do not break or damage the product.
- Make sure to use the device in below temperature range, otherwise it might hurt the battery life.  
Charging: 15° - 45°C      Working: 0° - 60°C

- If you have any special physical conditions, such as pregnancy, lung failure, cancer, epilepsy, or other illnesses, please consult your doctor before using essential oils. Stop using the product and open the windows for ventilation if you start to feel uncomfortable.
- If you have a skin reactions or eye uncomfortable feeling, stop using the product immediately and consult physician if necessary.
- Essential oils are highly concentrated and should always be handled with care, including the amount for each use.
- The machine contains battery that is non-replaceable.
- Do not allow water to enter or immerse to the device.
- The product should be stay away from any heat sources or heat producing appliances.
- Do not operate the device when the aerosol units are being used.
- Do not allow to run if the device is being blocked or covered.
- Do not touch the negative ion dispenser during operation.
- The product is not a medical device. We will not be liable for any accidents related to health and safety management.
-  This product is not intended for use by persons (including children) with reduced physical, sensory or mental capabilities, or lack of experience and knowledge, unless they have been given supervision or instruction concerning use of the product by a person responsible for their safety.
- Do not let children use this product. Keep out of reach of children as electric shock and injury may occur. Children should be properly supervised to ensure that they will not play with this product.
- To avoid fire, electric shock, injury or damage, do not place the product in the areas listed below :
  - Environments exposed to direct sunlight to high temperatures and keep away from sources of ignition.
  - Pressurized objects and combustibles.

## Product Dimensions

Product Name:	Zen Portable Diffuser	Main Unit Weight:	90g
Model Code:	BLA-005	Negative ion content:	19 million/cm <sup>3</sup>
Product Size:	Ø85mm(D) x 29.3mm(H)	Design:	USA
Material:	PP + PU + Lava Rock	Made in China	
Power:	5V == 0.6A	Manufacturer:	Bloomy Lotus LLC
Lithium Battery:	3.7V == 600mAh 222Wh		

## Product Warranty

Thank you for your purchase. The products carry a limited 12-month warranty on manufacturer defects. Please contact your local distributor for after sales enquiries or product maintenance.

Proof of purchase will be required. Warranty does NOT cover:

- Damage of accessories due to often use /depreciation
- Damage due to abuse or improper use of the product
- Damage of non-household use (i.e natural disaster, commercial use)
- Fail to provide any proof of product damage & purchase

We reserves the right for final decision of free product maintenance provided within mentioning period and any other conditions.

Product name : \_\_\_\_\_ Model no. : \_\_\_\_\_  
 Batch no : \_\_\_\_\_ Point of purchase: \_\_\_\_\_  
 Date of purchase: \_\_\_\_\_



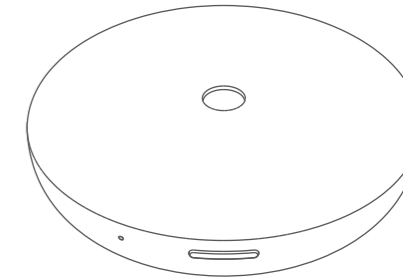
## Troubleshooting

If you experienced unsatisfactory operations, please follow our troubleshooting guidelines listed below.

Symptom	Possible Cause	Solution
The diffuser cannot turn on	No more battery power	Charge the battery until no more red light in the LED indicator
	Not turning on for a period	If the appliance is fully discharge, please charge the appliance for a few minutes to activate the appliance to charge up
	Use the adapter with less than 1A power	Change to 1A power or above adapter to charge the diffuser
The diffuser is on but no smell	Not enough essential oil in the lava rock filter	Add 3-5drops essential oil in the lava rock filter, add slightly more if you need extra smell
	The lava rock filter mixed with different essential oil	Recommend using different filter for each essential oil
	The lava rock filter did not change for a long period	Change a new lava rock filter as each used filter only work for about 3 months period

# BLOOMY LOTUS

Giving you a room to breathe.

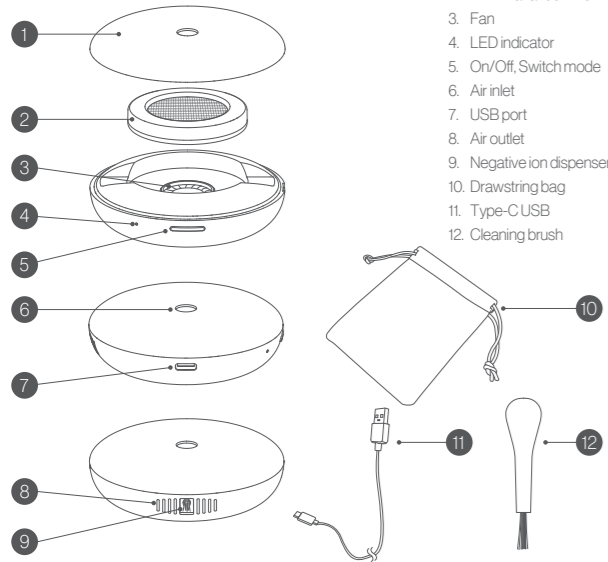


## USER'S MANUAL Zen Portable Diffuser

Thank you for purchasing this product.  
Please read the user manual carefully before use.

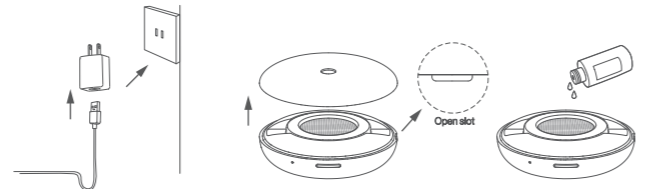
## Overview

### Main body

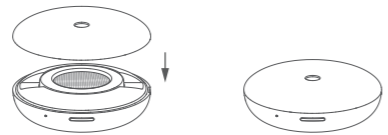


## Operation Instructions

Make sure the machine is fully charged before you use it for the first time.



1. Plug the Type-C USB to charge the battery. Charging time: 3hrs Working time: Low - Up to 11hrs High - Up to 8hrs
2. Remove the Top Cover.
3. Add 3-5 drops of your favorite essential oil directly to the HEPA filter.



4. Replace the top cover. Make sure the cover aligned with the magnet.
5. Long press 2sec the power button to start the device.

## Setting Instructions

### Power button

- Long press the button in 2sec to ON/OFF the unit.
- Short press the button to switch the mode. The default setting is Low Output – 2mins ON/ 1min off intervals, indicated by the blue LED light.
- Short press to switch the setting in High Output – run continuously, indicated by the green LED light.

### LED Indicator:

Blue(Keep On) – Low Output	Green(Keep On) – High Output
Blue(Breathing) – Low Output + Charging	Green(Breathing) – High Output + Charging
Blue(Flashing) – Low Battery	Green(Flashing) – Low Battery
Red(Breathing) – Charging	No Light – Off / Fully Charged

### Note :

- For best result, we recommend to use 100% pure essential oil with this diffuser. Artificial fragrance, flavor, or impurities might harm to the unit.
- Do not block the negative ion dispenser, air inlet and air outlet while in use.
- Regular cleaning of the appliance ensures optimal results and a longer life of the appliance.
- To keep a healthy battery life, fully charge it before the first-time use.
- Negative ions maybe affect by the environment such as temperature, humidity and air flow.
- Recommend change different filter for different type of essential oil use.

## Clean & maintenance

Always turn off the device before cleaning.



### Note :

- Do not use rubbing alcohol or water to clean the device as it might hurt the function of the filter.
- The HEPA filter can be use for 3-4hours per day and work continuously in 3 months.

# BLOOMY LOTUS

Giving you a room to breathe.