

BLOOMY LOTUS

Giving you a room to breathe.

Mandatory Safety

Caution:

- Never use the product for the proposes other than listed on this manual.
- Read the instruction manual before using this product.
- Remove all packaging before use.
- Use only the power plug contained in the package to avoid damage to the product.
- When unplugging the power adaptor, set your hand on the adaptor body instead of pulling the cord.
- If the unit will not be used for an extended period or needs to be relocated, unplug the power adaptor, dispose of the water, and clean the unit before storage.
- Avoid moving the unit while in use.
- The precautions listed in this manual are to ensure safe and proper use of this product by the user, and to avoid any danger or loss that might occur to the user or others.
- "WARNING" contains important safety instructions. Be sure to follow these instructions.



Warning

- This device is not intended for use by persons with reduced physical or cognitive capacities without the necessary experience or knowledge, unless they have been trained to use the device correctly by a person responsible for their safety and have understood the risks involved.
- Stop using the product immediately and unplug the device once smoke, smell, unusual sounds or other anomalies occur.
- Do not modify, fix, or dismantle this product, as fire, electric shock, or damage may occur.
- When the product is at the end of its life, we recommend disposal at a collection point for the recycling of electrical and electronic equipment, rather than with household waste. The symbols on the product, instruction manual and packaging allow for proper sorting and disposal.



- When this product remains unused for a long period of time, the main unit must be unplugged from the electrical socket and water removed. Otherwise electric shock malfunction may occur.
- This product must be disconnected from the power sources before cleaning and maintenance.
- Please avoid dripping the essential oil onto the exterior of the product or onto furniture. If essential oil dripping accidentally occurs, wipe off immediately to avoid discoloration of the exterior of the product or the furniture.
- This product is not medical equipment. Directly inhaling the aroma mist from the spout is not recommended.
- If you have any special physical conditions, such as pregnancy, lung failure, cancer, epilepsy, or other illnesses, please consult your doctor before using essential oils. Stop using the product and open the windows for ventilation if you start to feel uncomfortable.
- Essential oils are highly concentrated and should always be handled with care, including the amount for each use.
- Do not handle the main unit and outlet with wet hands, or let water or other liquids spill onto them, as this may result in electric shocks.
- This product is not intended for use by persons (including children) with reduced physical, sensory or mental capabilities, or lack of experience and knowledge, unless they have been given supervision or instruction concerning use of the product by a person responsible for their safety.



This product is NOT a toy. Do not let children use this product. Keep the device, all parts/components, an the power cable out of the reach of children. Children should be properly supervised to ensure that they will not play with this product.

- Interchangeable ears are a choking hazard and are not suitable to be within reach of children.
- To avoid fire, electric shock, injury or damage, do not place the product in the areas listed below :
 - Environments exposed to direct sunlight to high temperatures, and keep away from sources of ignition.
 - Pressurized objects and combustibles.

Specification

Product Dimensions:

Product Name: JungleFUN®
 Model code : BLB001
 Product Size: 105-118mm(L), 102mm(W), 182-215mm(H)
 Water: Room-temperature tap water/mineral water
 Material: Plastic & Silicone
 Power input : DC24V / 12W
 Manufacturer: Bloomy Lotus LLC

Main unit weight : Approx. 350g
 Reservoir Capacity: 145ml
 Coverage Area: Up to 45m2
 Environment: Indoor
 Run Time: Up to 2 /4 /8 hours
 Design : USA
 Made in China

Product Warranty:

Thank you for your purchase. The products carry a limited 12-month warranty on manufacturer defects. Please contact your local distributor for after sales enquiries or product maintenance. Proof of purchase will be required. Warranty does NOT cover:

- Damage of accessories due to often use /depreciation
- Damage due to abuse or improper use of the product
- Damage of non-household use (i.e natural disaster, commercial use)
- Fail to provide any proof of product damage & purchase

We reserves the right for final decision of free product maintenance provided within mentioning period and any other conditions.

Product name : _____ Model no. : _____
 Batch no : _____ Point of purchase: _____
 Date of purchase: _____



Troubleshooting

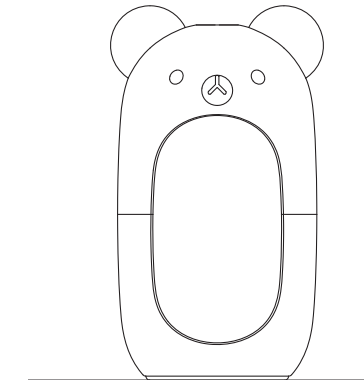
If you experienced unsatisfactory operations, please follow our troubleshooting guidelines listed below.

Symptom	Possible Cause	Solution
Diffuser does not turn on/ diffuser shuts off before set time is over.	No water in the water tank Power cord not connected correctly	Add water to water tank until it reaches the RED Maximum water marker. Disconnect power cord and re-connect carefully.
No mist or abnormal mist	Normal LED light but no mist.	1. Check the water level. The water level should not be higher than the red water marker. 2. Ensure that tap water or mineral water is added. 3. Defective mist chip, please contact your direct retailer.
	No mist when put on the cover.	1. Avoid placing the product on soft or uneven surfaces. This will block the air inlet at the bottom. 2. Determine if the fan is working. If it is not working, please contact your direct retailer. 3. Make sure the ears component installed properly on the cover.
	Mist chip with oil residue. Air inlet at the bottom of the diffuser is blocked?	Please follow instructions on cleaning and maintenance. Clean the air inlet. A partially blocked inlet may interfere with the level of mist output.
Water Leak	Temperature and humidity levels can cause the mist to quickly condense into droplets.	Adjust room temperature and humidity levels to compensate.

Do not attempt to dismantle or repair the product by yourself. If the unit still does not operate satisfactorily, please contact your local distributor.

BLOOMY LOTUS

Giving you a room to breathe.

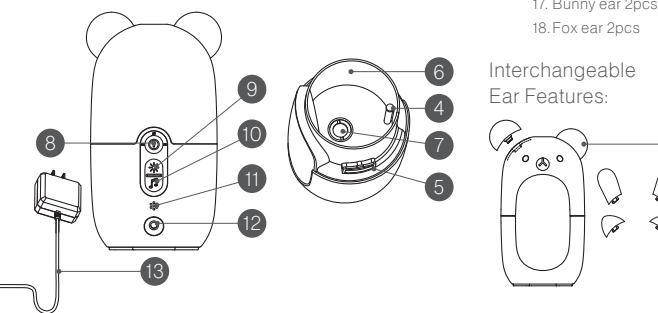
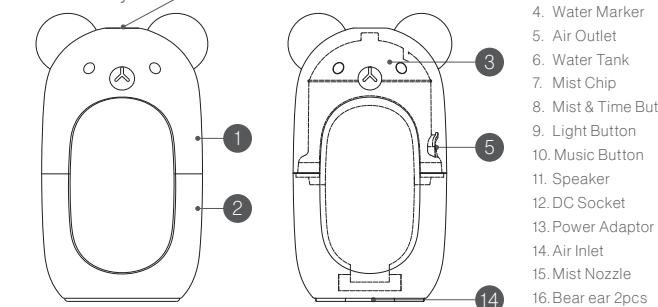


USER'S MANUAL
JungleFUN®

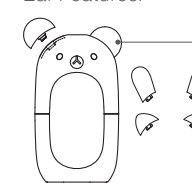
Thank you for purchasing this product.
Please read the user manual carefully before use.

Overview

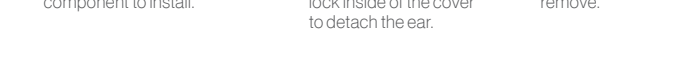
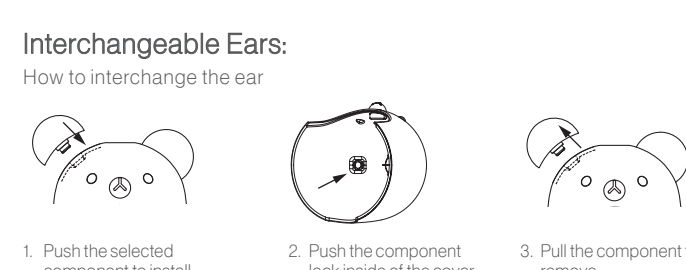
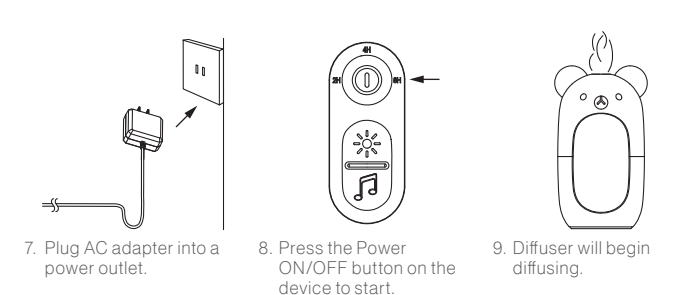
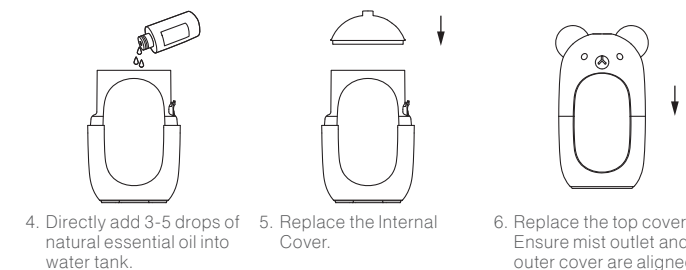
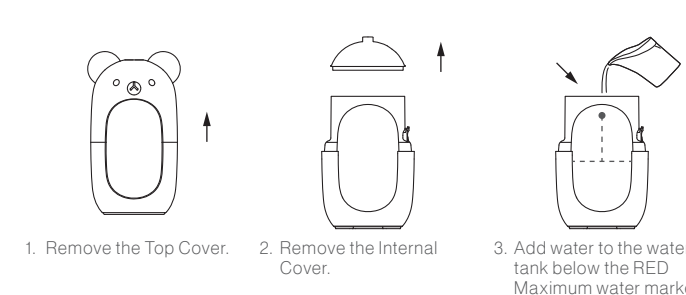
Main body



Interchangeable Ear Features:



Instructions



Caution:

1. Be sure to handle this product with care to avoid impacts or drops.
2. The unit should be placed on a level solid surface. Do not place on carpets, rugs, wooden/ polished furniture or uneven or unstable surfaces.
3. Use a suitable measuring cup to fill the water into the water tank. Never attempt to fill water under a running tap or whilst plugged in.
4. The water level should not exceed the water marker to avoid damage to this device.
5. Keep water away from Air outlet and Air inlet.
6. For best result, we recommend that you use 100% natural essential oil with this scent diffuser. Artificial fragrance, flavor, or impurities might harm to the unit.
7. Always unplug the product from electrical socket when not in use.
8. Do not remove the covers during operation.
9. Ensure to fill up the water tank before operating the diffuser in all individual setting.

Not to be operated by children, to be used under adult supervision only. Read detailed instructions and caution included before use.

Settings

After the device has plugged into the power outlet, the device will be under the STANDBY mode.

1. Mist & Time Button:

- Press the button once and the unit is turned ON. The default time is 2 hours, indicated by the "2H" green LED light.
- Press the button a second time and the working time is set to be 4 hours, indicated by the "4H" green LED light.
- Press the button for the third time and the working time is set to be 8 hours intermittently, indicated by the "8H" green LED light. (5 mins ON and 5 mins OFF)
- Press the button a fourth time to switch the diffuser OFF.

2. Light Button

- The default rotating lights setting will start automatically while the device is in MIST mode.
- Press the Light button a first time to switch to "light blue".
- Press the Light button a second time to switch to "candle light".
- Press the Light button a third time to switch the "purple light".
- Press the Light button a fourth time to switch the light OFF.

LIGHT mode can operate independently as a Night Light function by directly pressing the LIGHT button during the STANDBY mode



3. Music Button

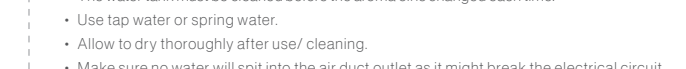
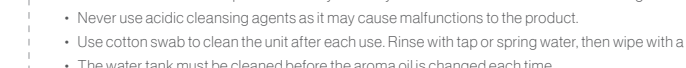
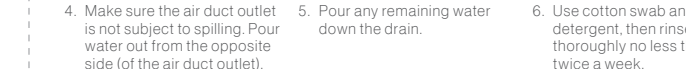
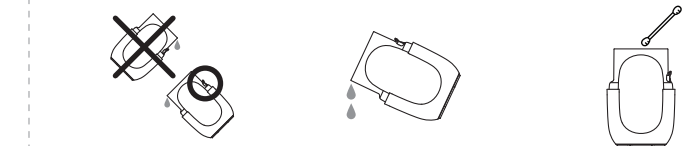
- The music will start automatically while the device is in MIST mode.
- There is three different sound volume, keep pressing to adjust the volume (LOW, MEDIUM and HIGH) or OFF the music.

MUSIC mode can operate independently as a Music Box function by directly pressing the MUSIC button during the STANDBY mode

Note:

1. A slight difference in mist amount produced by different units is expected.
2. Factors affecting the mist amount: water, humidity, temperature, and air flow.
3. Automatically shut-off function when the diffuser detects the water is empty or when it is tipped over.

Cleaning and Maintenance



Caution:

- Never soak or wash this product directly as it may cause mechanical malfunction or danger.
- Never use acidic cleansing agents as it may cause malfunctions to the product.
- Use cotton swab to clean the unit after each use. Rinse with tap or spring water, then wipe with a dry cloth.
- The water tank must be cleaned before the aroma oil is changed each time.
- Use tap water or spring water.
- Allow to dry thoroughly after use/ cleaning.
- Make sure no water will spit into the air duct outlet as it might break the electrical circuit.