



SGS

EU Type Examination Certificate Number: **0120/SGS0212**

Shenzhen Clou Electronics Co., Ltd.

16/F, Clou Building
Baoshen Road South
Hi-tech Industrial Park North
Nanshan District
Shenzhen, China

Instrument Identification:
CL710K22

Instrument Traceable Number
0120/SGS0212

Single Phase, Active Import/ Export, Outdoor, Electricity Meter

has been assessed and certified as meeting the requirements of

EU Directive 2014/32/EU

on Measuring Instruments Annex II, Module B

It is certified that the manufacturer's technical design and specimen for the above instrument has been examined and, based on the evidence submitted, it is considered that the instrument conforms to the requirements of Annex V of EU Directive 2014/32/EU

This certificate must be used in conjunction with a certificate covering the product verification as required in Annex II, Module D or Annex II, Module F

This certificate is valid until 11th April 2026
Issue 3

Certification is based on report number(s) SZES151000342001 dated 5th April 2016

Authorised Signature

SGS United Kingdom Limited, Notified Body 0120
Unit 202B Worle Parkway, Weston-super-Mare, BS22 6WA UK
t +44 (0)1934 522917 f +44 (0)1934 522137 www.sgs.com

Contact Address

SGS United Kingdom Ltd, Units 12A & 12B, South Industrial Estate, Bowburn, Durham, DH6 5AD UK
t +44 (0)191 377 2000 f +44 (0)191 377 2020 www.sgs.com




This document is issued, on the Client's behalf, by the Company under its General Conditions of Service printed overleaf. The Client's attention is drawn to the limitation of liability, indemnification and jurisdiction issues defined therein.

Any other holder of this document is advised that information contained hereon reflects the Company's findings at the time of its intervention and is not intended to exceed the limits of Clients instructions, if any. The Company's sole responsibility is to its Client and this document does not exonerate parties to a transaction from exercising all their rights and obligations under the transaction documents.

SGSPAPER 19022069


EU Type Examination Cert.



	EU-Type Examination Certificate Number:	
	0120/ SGS0212	
	Issue Number: 3	Dated: 24 th May 2018

1. Technical Data

Manufacturer	Shenzhen Clou Electronics Co., Ltd.
Meter Type	CL710K22
Voltage Rating (U_n)	220-240V
Current Rating (I_{min} – I_{ref} (I_{max}))	0.05-5(100)A, 0.05-5(80)A
Frequency (F_n)	50/60Hz
Active Accuracy Class (kWh)	C (kWh)
Type of circuit	1p2w
Temperature Range	-40°C to +70°C
Software/ Firmware Version No Identification Location	08 LCD
Bill Of Materials Number	Keyboard:26064696000001 Non-Keyboard:26064696000003
IP Rating	IP54
Insulation Protective Class	Class II
Mechanical Environment	M1
Electromagnetic Environment	E2
LED Pulse Constant	1600 imp/ kWh
Impulse Voltage Rating	6kV
AC Voltage Rating	4kV
Main Cover Sealing Type	Wire & Crimp
Integrity of meter	Inaccessible without breaking seals
Intended Location of the Meter	Outdoor
Type of Register	LCD
Terminal Arrangement(s)	BS

	EU-Type Examination Certificate Number:	
	0120/ SGS0212	
	Issue Number: 3	Dated: 24 th May 2018

2. Photographs of Meter and Sealing Plan



SGS


EU-Type Examination Certificate Number:

0120/ SGS0212

Issue Number: 3

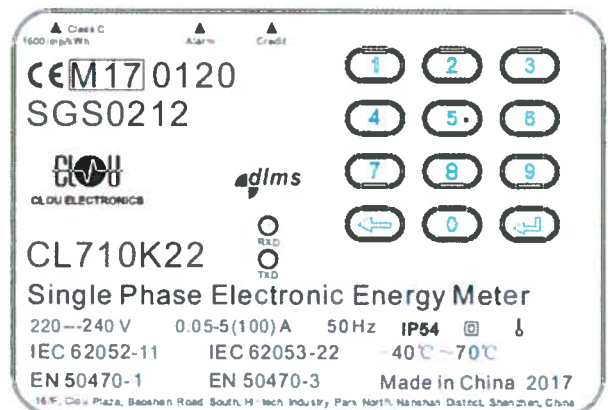
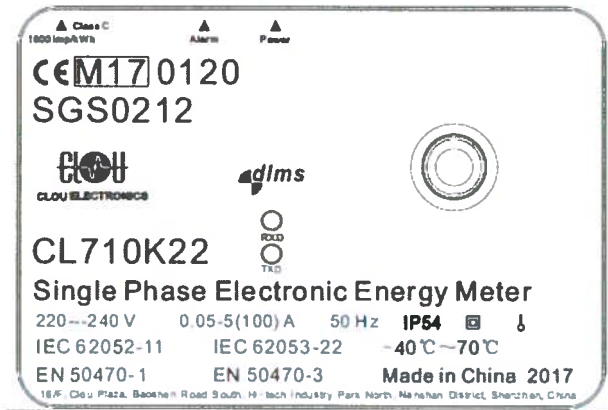
Dated: 24th May 2018



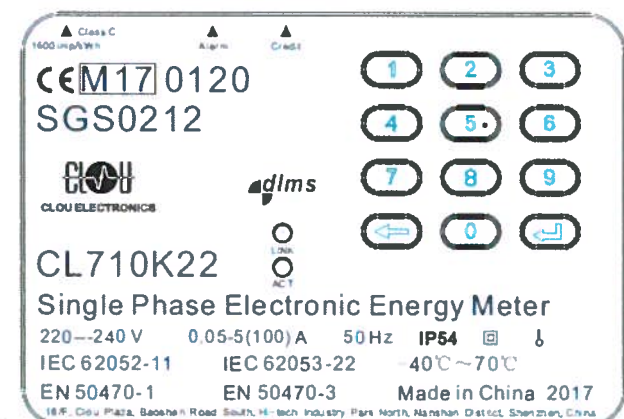
	EU-Type Examination Certificate Number:	
	0120/ SGS0212	
	Issue Number: 3	Dated: 24 th May 2018

3. Nameplates

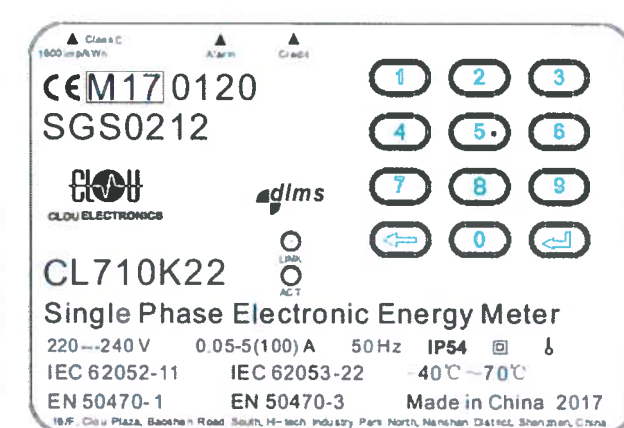
PLC Version




RF Version



GPRS Version



	EU-Type Examination Certificate Number:	
	0120/ SGS0212	
	Issue Number: 3	Dated: 24 th May 2018

4. Influence factors for temperature, frequency and voltage

Current	PF Cos	-40°C	-25°C	-10°C	5°C	30°C	40°C	55°C	70°C
I _{min}	1.0	0.66	0.41	0.23	0.17	0.09	0.12	0.16	0.19
I _{tr}	1.0	0.64	0.40	0.26	0.13	0.07	0.09	0.17	0.19
10I _{tr}	1.0	0.65	0.41	0.26	0.13	0.03	0.06	0.14	0.15
I _{max}	1.0	0.47	0.35	0.28	0.23	0.19	0.18	0.17	0.18
I _{tr}	0.5ind	0.57	0.36	0.21	0.13	0.10	0.11	0.19	0.19
10I _{tr}	0.5ind	0.64	0.37	0.24	0.13	0.06	0.08	0.08	0.15
I _{max}	0.5ind	0.60	0.51	0.46	0.43	0.40	0.39	0.37	0.38
I _{tr}	0.8cap	0.56	0.37	0.22	0.11	0.07	0.10	0.16	0.16
10I _{tr}	0.8cap	0.59	0.38	0.23	0.12	0.04	0.06	0.13	0.14
I _{max}	0.8cap	0.49	0.39	0.32	0.28	0.25	0.24	0.22	0.23

During the type approval examination the influence factors for temperature, frequency and voltage are determined per load point. The table above represents the sum of the square values per load, determined via the following formula:-


$$\delta e (T, U, f) = \sqrt{(\delta e^2 (T, I, \cos\phi) + \delta e^2 (U, I, \cos\phi) + \delta e^2 (f, I, \cos\phi))}$$

where

$\delta e(T, I, \cos\phi) =$ Additional error due to variation of the temperature at the same load

$\delta e(U, I, \cos\phi) =$ Additional error due to variation of the voltage at the same load

$\delta e(f, I, \cos\phi) =$ Additional error due to variation of the frequency at the same load


	EU-Type Examination Certificate Number:	
	0120/ SGS0212	
	Issue Number: 3	Dated: 24 th May 2018

5. Annex of Variants

Product Variant Identification Details:

Type Designation	Description of meter
CL710K22	220-240V 0.05-5(80)A 0.05-5(100)A 1p2w Optional detachable communication modules: PLC module, RF module, GPRS module

Modifications to the meter(s) described according to approval No. **0120/ SGS0212** must be notified to the issuing body to confirm the meter(s) continuing compliance to the relevant pattern approval standard(s).

	EU-Type Examination Certificate Number:	
	0120/ SGS0212	
	Issue Number: 3	Dated: 24 th May 2018

6. Document Revision History

Issue	Date	Comments
1	12/04/2016	Initial Issue
2	19/01/2017	Updated to the requirements of EU Directive 2014/32/EU Mechanical and Electromagnetic environments added to technical data
3	24/05/2018	Optional GPRS communication module

"This document is issued by the Company subject to its General Conditions of Service available on request or accessible at <http://www.sgs.com/en/Terms-and-Conditions.aspx> and, for electronic format documents, subject to Terms and Conditions for Electronic Documents at www.sgs.com/terms_e-document.htm. Attention is drawn to the limitation of liability, indemnification and jurisdiction issues defined therein. Any holder of this document is advised that information contained hereon reflects the Company's findings at the time of its intervention only and within the limits of Client's instructions, if any. The Company's sole responsibility is to its Client and this document does not exonerate parties to a transaction from exercising all their rights and obligations under the transaction documents. This document cannot be reproduced except in full, without prior written approval of the Company. Any unauthorized alteration, forgery or falsification of the content or appearance of this document is unlawful and offenders may be prosecuted to the fullest extent of the law."

"Unless otherwise stated the results shown in this test certificate refer only to the sample(s) tested *and such sample(s) are retained for 28 days only.*"

**** End of Document ****