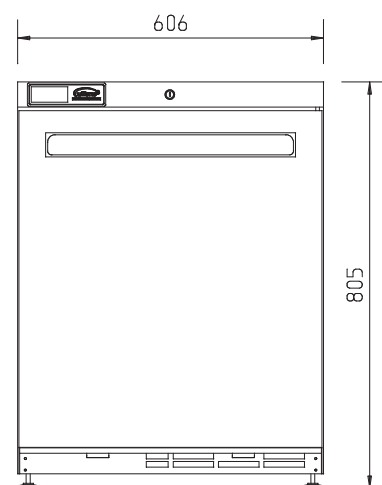
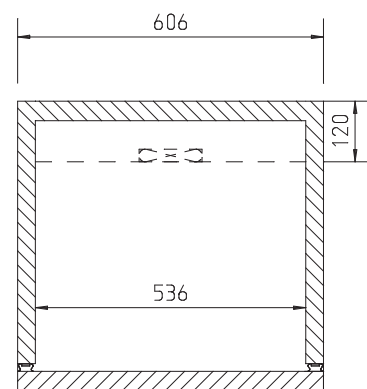
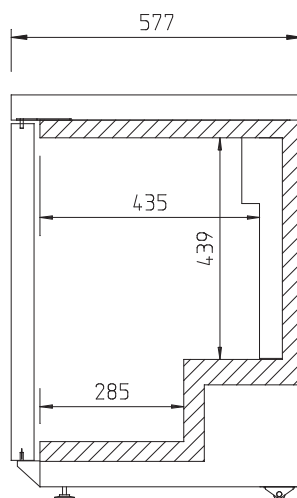


HA135-HC



CATEGORY	HYDROCARBON
RANGE	Amber
UNIT	REFRIGERATOR
TYPE	SELF CONTAINED
DOORS	1



SPECIFICATIONS

CAPACITY LITRES	135
TEMPERATURE	1°C / 4°C
DIMENSIONS - W X D X H (ON CASTORS) MM	606 W x 577 D x 805 H
WEIGHT UNPACKED (KG)	65

STANDARD INCLUSIONS

DOOR TYPE	SD (Solid Door)
FINISH (INTERIOR AND EXTERIOR EXCLUDING REAR AND UNDER)	SA (Stainless Steel Exterior, Aluminium Interior)
SHELVES/DOOR	2

GAS TYPE

REFRIGERANT	R600a
-------------	-------

ELECTRICAL

POWER SUPPLY	10 amp
POWER CABLE LENGTH (METRES)	2
RUNNING AMPS	0.53

PERFORMANCE

KWH/24HR READING	0.8
TEST STANDARD	EN 16825 (Professional)
TEST CONDITIONS	4 M1
AMBIENT RATING	43°C