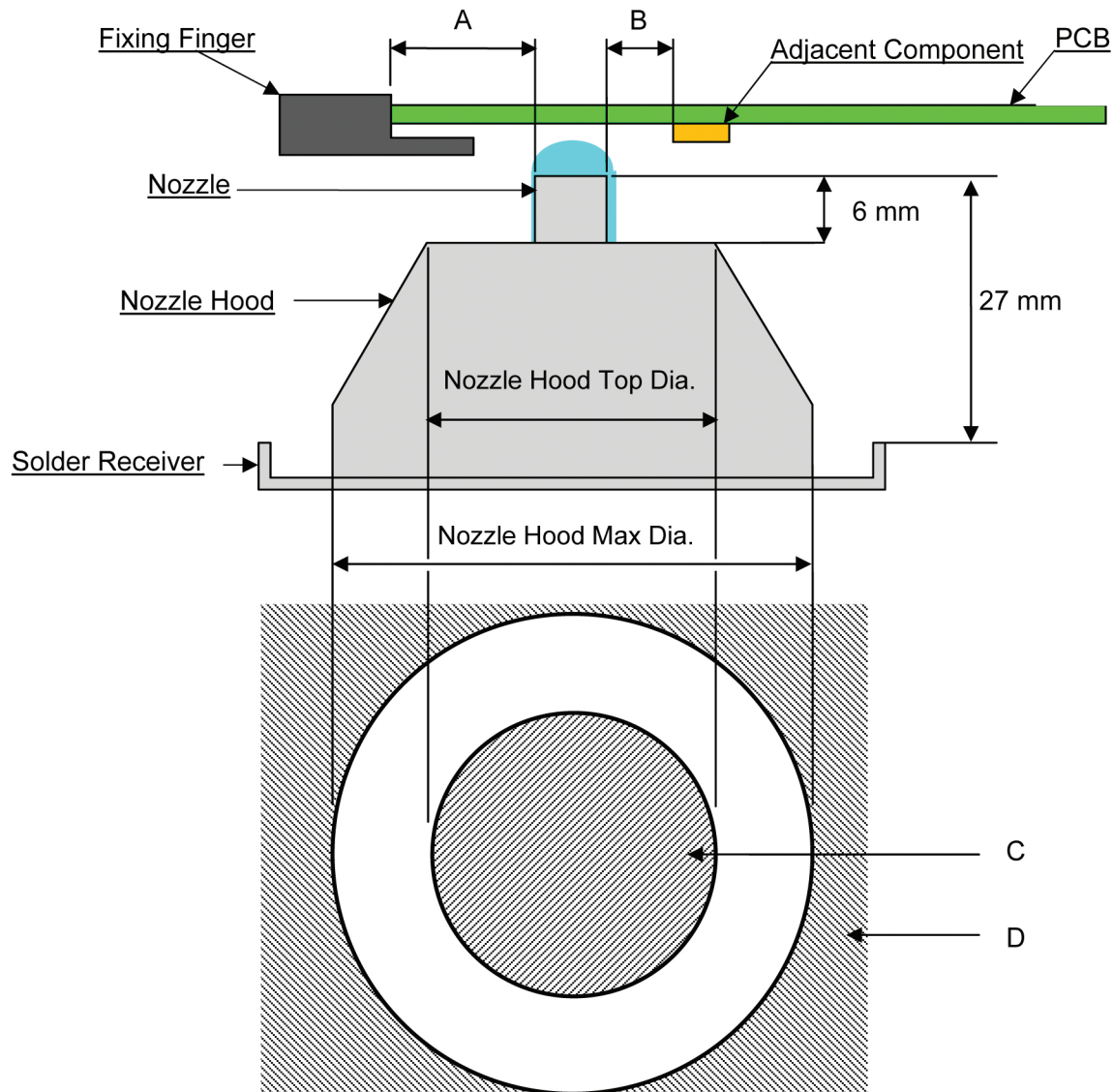


Specification for Clearance Between Bottom of PCB and Solder Nozzle and Hood Assembly

Spec. ULTIMA-TR2



- A Limit of soldering range: 5 mm from PCB edges
- B Limit location of adjacent components: 3 mm from nozzle outer circumference
- C Limit height of components (Shaded area): Top part of nozzle hood
 - Standard hood (Top dia.: Φ 26 mm): 6 mm
 - Large-type hood (Top dia.: Φ 36 mm): 6 mm
- D Limit height of components (Shaded area): Outside of Nozzle hood
 - Standard hood (Max dia. Φ 43 mm): 27 mm
 - Large-type hood (Max dia. Φ 53 mm): 27 mm

Limit height of components with hood removed: 27 mm

Note: Large-type hood is available as optional.