

QC

Certificate of Analysis

REQUESTED BY: Hunter Scientific Limited (Unit 1, Priors Hall Widdington, Saffron Walden CB11 3SB Essex United Kingdom of Great Britain and Northern Ireland)

ASSAY REQUESTED BY CUSTOMER: MEA - Standard Mouse embryo assay

OPERATION PROCEDURE: SOP-MEA-09

TYPE OF ASSAY: Indirect

INTERNAL NUMBER: MEA.018.1448.2022

DATE: 20/07/2022 - 24/07/2022

Product information provided by the customer (Embryotools cannot be held responsible for the veracity of this information)

DESCRIPTION OF TEST PRODUCT: Soda Pasteur Pipette

REF: PPS

LOT NUMBER: 5048

EXP. DATE: 2026-06

PROTOCOL:

Samples were flushed and incubated at 37°C for 60 min with previously tested culture medium. Culture dishes were prepared with the extracted medium and equilibrated overnight prior to use. Fresh 1-cell stage mouse embryos were collected from F1 hybrid females (B6/CBA) crossed with males from the same genetic background, washed thoroughly and cultured in the extracted medium up to Day 5. Control group was prepared following the same set-up and conditions, and embryos cultured in parallel using tested medium not exposed to test samples. Embryo development of test and control group was followed every 24 h and photos were taken and included in this report (annex I).

CONTROL AND TEST ASSAY RESULTS:

Embryo developmental rates of control and tested group.

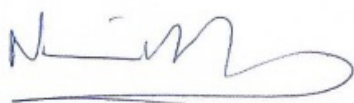
	Embryo development rates				Result
	n	Day 2 Two-cell stage n (%)	Day 5 Expanded blastocyst stage n (%)	Good Quality (morphology) Blastocysts n (%)	
Control	15	15 (100)	15 (100)	15 (100)	Passed*
Soda Pasteur Pipette (Lot:5048)	21	21 (100)	21 (100)	18 (85.71)	Passed*

SUMMARY OF OBSERVATIONS: All test and control embryos were selected randomly from a common pool and cultured at 37.3°C with a tri-gas atmosphere with optimal %CO₂ and %O₂. Embryotools acceptance criteria for this standard test is that more than 80% of mouse embryos develop to the expanded blastocyst stage and pass a visual morphological examination of the inner cell mass (ICM) and trophectoderm (TE) cells. The results of this assay refer to the items tested.

* More than 80% of the test group embryos developed to the expanded blastocyst stage within 5 days, fulfilling acceptance criteria for this test.

These results are representative of the test samples submitted by the customer.

Nuno Costa-Borges, PhD



Scientific Director

Gloria Calderón, PhD

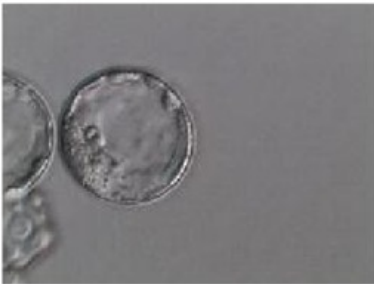


Quality Assurance

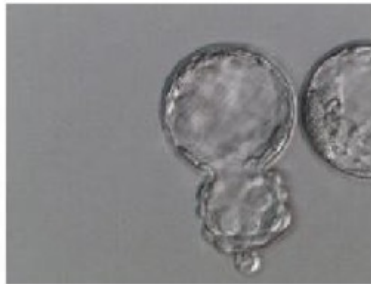


Annex I
Control

#1, 24/07/2022 10:21:16



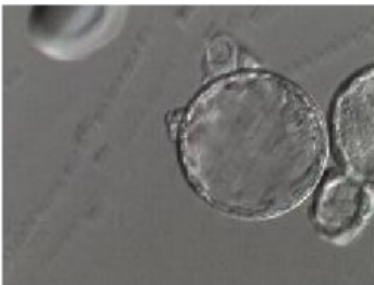
#2, 24/07/2022 10:21:19



#3, 24/07/2022 10:21:21



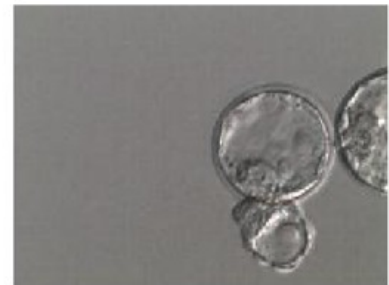
#4, 24/07/2022 10:21:39



#5, 24/07/2022 10:21:40



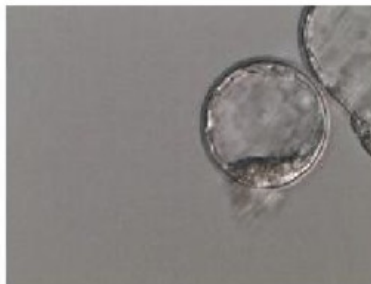
#6, 24/07/2022 10:21:55



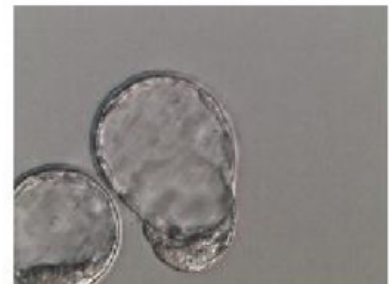
#7, 24/07/2022 10:21:56



#8, 24/07/2022 10:22:16



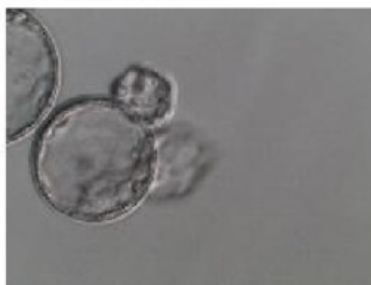
#9, 24/07/2022 10:22:18



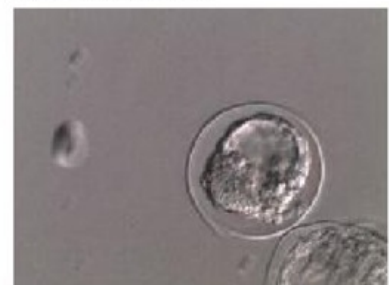
#10, 24/07/2022 10:22:33



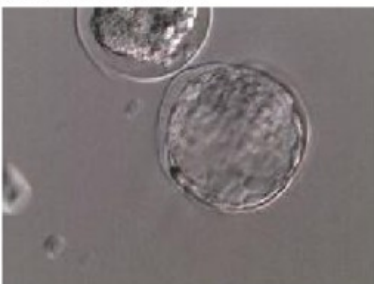
#11, 24/07/2022 10:22:35



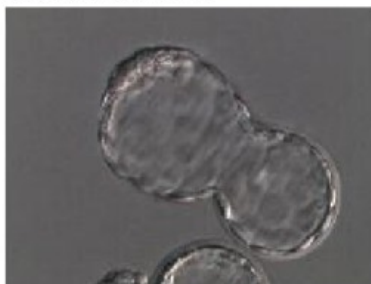
#12, 24/07/2022 10:22:57



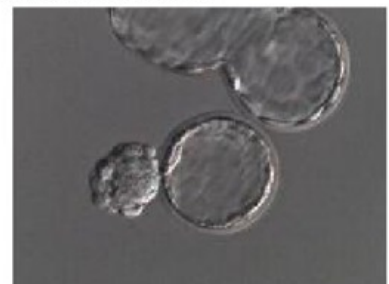
#13, 24/07/2022 10:22:59



#14, 24/07/2022 10:23:20



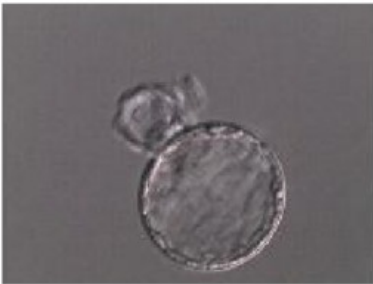
#15, 24/07/2022 10:23:21



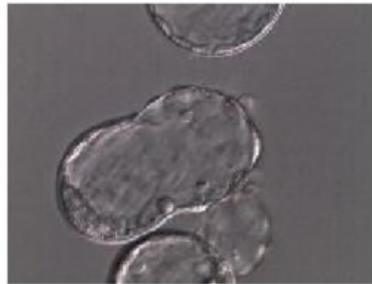


Soda Pasteur Pipette
(REF: PPS ; Lot: 5048)

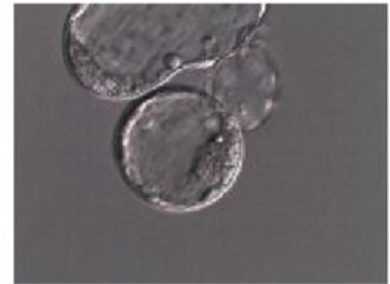
#1, 24/07/2022 10:42:45



#2, 24/07/2022 10:42:46



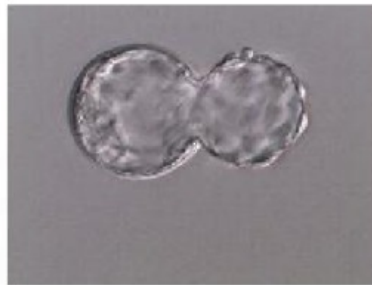
#3, 24/07/2022 10:42:48



#4, 24/07/2022 10:43:04



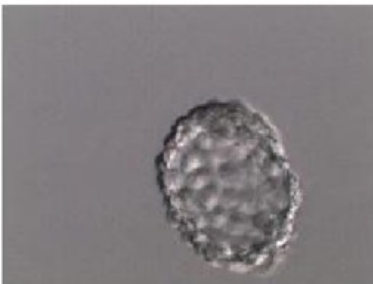
#5, 24/07/2022 10:43:06



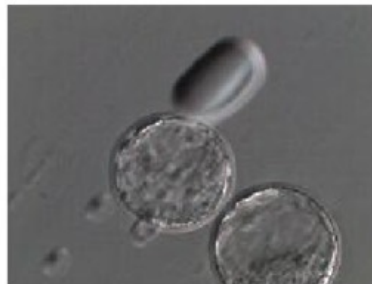
#6, 24/07/2022 10:43:16



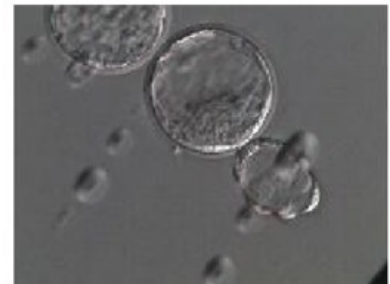
#7, 24/07/2022 10:43:19



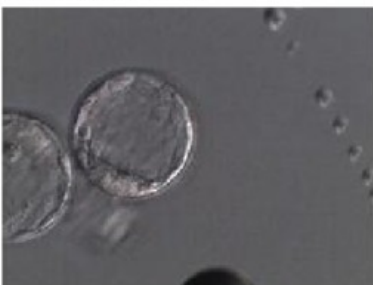
#8, 24/07/2022 10:43:32



#9, 24/07/2022 10:43:34



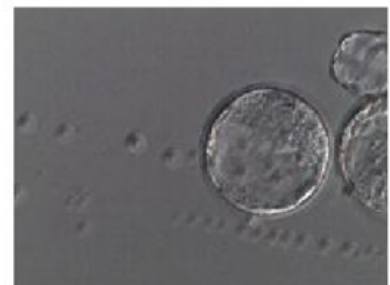
#10, 24/07/2022 10:43:47



#11, 24/07/2022 10:43:48



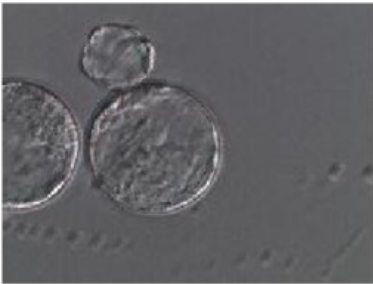
#12, 24/07/2022 10:44:06





Soda Pasteur Pipette
(REF: PPS ; Lot: 5048)

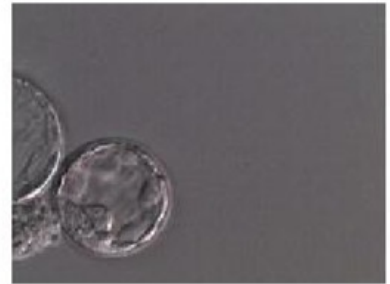
#13, 24/07/2022 10:44:07



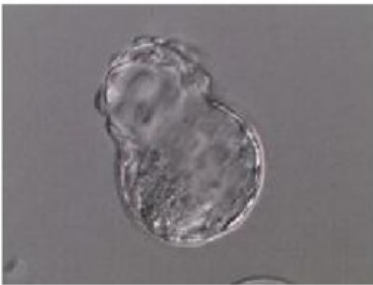
#14, 24/07/2022 10:44:21



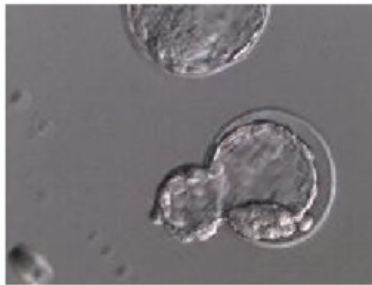
#15, 24/07/2022 10:44:22



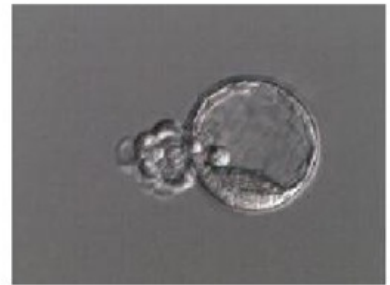
#16, 24/07/2022 10:44:38



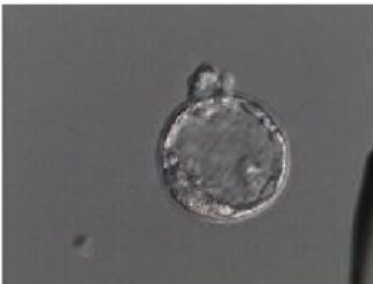
#17, 24/07/2022 10:44:38



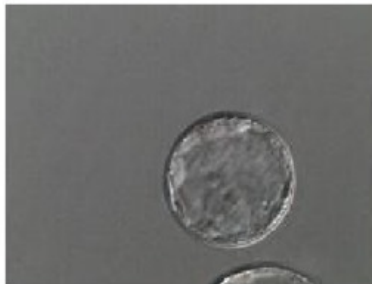
#18, 24/07/2022 10:44:55



#19, 24/07/2022 10:44:56



#20, 24/07/2022 10:45:09



#21, 24/07/2022 10:45:09

