

DuraLabel
BRONCO[®]

QUICKSTART GUIDE

READ ME FIRST



800.788.5572
DuraLabel.com

1. Getting Started

Thank you for choosing the DuraLabel Bronco. With this guide, you'll quickly learn how to set up your Bronco, load supplies, and start printing labels.

WHAT'S IN THE BOX

- Bronco Printer
- User Documentation
- Bronco Software CD
- AC Power Adapter
- USB Cord
- Supply Spindle
- Ribbon Take-Up Core



REMINDER: Periodic cleaning is required for your printer's operation, as adhesive and dust will build up during use. Clean the print head, platen roller, and cutter blades with a provided cleaning swab, or with isopropyl alcohol and a soft cloth, after every 2-3 rolls of supply. See your printer's User Guide for details, or watch instructional videos at GraphicProducts.com/support.

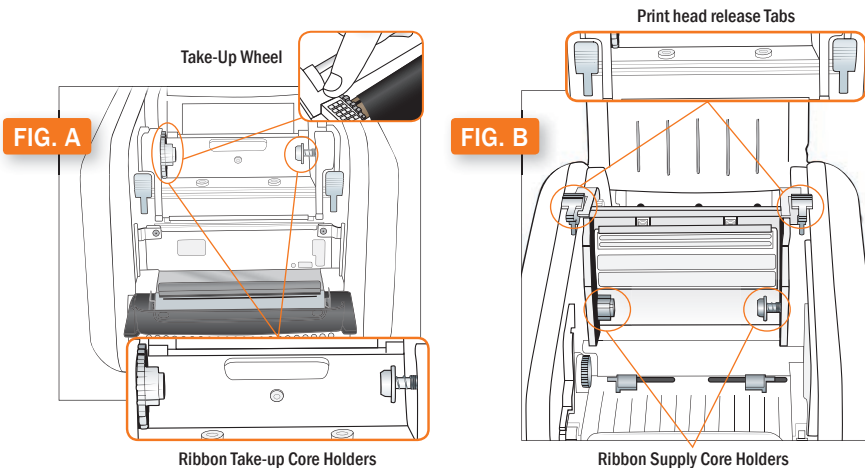
2. Loading Ribbon and Label Stock

To load your Bronco with supplies, you will need to raise the hinged cover. The cover will hold at the fully-opened position.

2.1 Loading Ribbon

The printing ribbon provides the “ink” for the printing process. As labels are printed, the used ribbon will be collected on a take-up roller for later disposal.

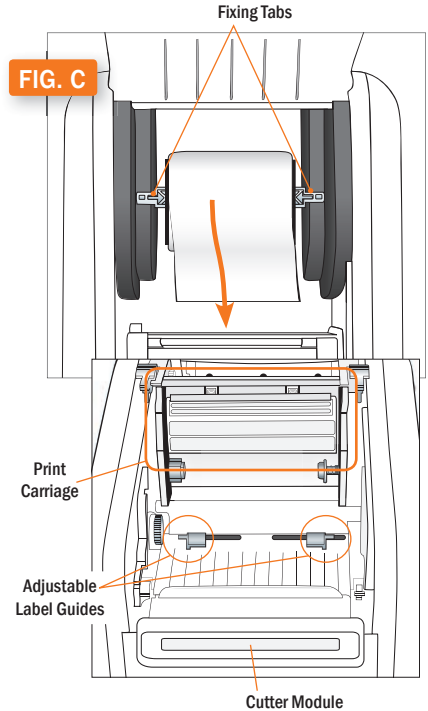
1. Start with a fresh, empty ribbon take-up core. Fit one end of the core onto the green spring-loaded holder on the top of the print head carriage. Then, fit the other end of the ribbon core onto the wheeled holder (Fig. A). Turn the take-up core or holder by hand, until the tab on the holder locks into the notch in the core.
2. Then, push the green print head release tabs (Fig. B) to release the print head carriage. It will spring upward. Hold the new roll of ribbon so the loose end falls to the rear of the printer. Fit one end of the ribbon core onto the green spring-loaded holder (Fig. B) on the underside of the print head carriage.
3. Then, fit the other end of the ribbon core onto the geared holder. Turn the ribbon core by hand until the tab on the holder locks into the notch in the core.
4. Pull the loose end of the ribbon up and around the print carriage and use a small piece of label stock or tape to secure the end of the ribbon to the top of the empty rewind core.
5. Pull the ribbon snug by turning the green take-up wheel (Fig. A).



2.2 Loading Label Stock

Your label stock is the base material for your labels, or the “paper” in the printing process. For each roll of ribbon you use in the Bronco, you will probably use three or four rolls of label stock.

1. Place label supply onto the supply spindle and slide the fixing tabs onto either side (Fig. C) to hold the roll in the center of the spindle.
2. With the label supply unrolling from the top of the roll and feeding toward the print head carriage, rest the supply spindle into its slots in your Bronco.
3. Feed the end of the label supply under the print carriage, threading it between and beneath the green adjustable label guides, and over the top of the rubber roller near the cutter module.
4. Slide the green adjustable label guides together to keep the label stock centered, but not so tight as to bend or wrinkle the label stock.
5. Close the print head carriage by pressing it down into place, and then close the Bronco cover.



When loading supplies, you can also flip the cutter module down to provide more room. Simply pull the top edge of the cutter module away from the rest of the Bronco; it will rest in its lowered position. If you lower the cutter module while changing supplies, be sure to raise it back into place before closing the Bronco lid.

3. Connecting the Printer

When connecting your Bronco to a computer for the first time, follow these steps.

NOTE: You may need IT administrator privileges to install a driver.

1. Connect the power supply from the DuraLabel Bronco printer to an electrical outlet. Next, connect the USB cable from the DuraLabel Bronco to your PC. Turn on your Bronco using the power switch on the back of the printer.
2. Insert the DuraLabel Bronco Installation CD into your computer's CD drive. When the DuraLabel Bronco startup screen appears, choose Install Driver. (If your computer does not have a CD drive, you can download the driver installer from GraphicProducts.com/support, and run that program to continue.)

NOTE: If inserting the CD does not automatically show the DuraLabel Bronco screen, go to Start > Computer and double-click on your CD/DVD drive, which should show the DL icon.

3. Accept the license agreement and click Next.
4. Choose an installation directory; by default, this will be "C:\Seagull." Then, click Next.
5. Make sure that the option to "Run Driver Wizard after unpacking drivers" is checked, and click Finish.
6. When the Driver Wizard starts, the program should automatically detect your Bronco. Select the entry for your Bronco (in the list under "Install a driver for a Plug and Play printer") and click Next.
7. Choose a name for your Bronco; by default, this will be "Graphic Products DuraLabel Bronco 300." You can also choose whether Bronco should be your default printer, or if you want to share your Bronco over a local network. Make your selections and click Next.
8. Review the installation details and click Finish to install the driver. You will see a progress bar as the software is installed.

5. Choosing Driver Settings

We recommend checking your Bronco's settings before beginning any print job or after changing supplies. Changes to these settings may not take effect correctly if your label design software is already running; we recommend closing any open programs, making the necessary changes, and then opening your label design. The best way to adjust these settings is through the Devices and Printers window:

1. In your computer's Start menu, choose "Devices and Printers." (If you do not see this option, open the Control Panel and choose "Devices and Printers" there.)
2. Right-click the entry for your Bronco and choose Printing Preferences. The driver settings window will open.

This window has several tabs: Page Setup, Graphics, Stock, Options, and About. (The About tab has no options, only information about your driver software.)

5.1 Page Setup

The first tab of the driver settings is for basic label controls, such as print orientation. For most label designs, the orientation will need to be set to Landscape. The Stock Name setting, which lets you set custom label dimensions, can be left on the default setting (USER) when you use label design programs such as DuraSuite or LabelForge.

5.2 Graphics

This tab includes options for Dithering, which describes using a pattern of small dots to approximate different levels of darkness. For bold, clear labels, this should typically be set to None; for complex labels with multiple shades of gray, the Halftone option is usually best.

5.3 Stock

This tab includes options for different types of label stock and how your Bronco will handle them.

5.3.1 PRINT METHOD

For nearly all label materials, the Print Method should be set to Thermal Transfer. Some unusual materials do not require a printing ribbon, and can be used with the Direct Thermal printing method.

5.3.2 MEDIA TYPE

This option describes the type of label stock that you have loaded:

- **Continuous:** an uninterrupted, continuous roll of label stock (the most common supply type)
- **Label With Gaps:** a roll of pre-cut labels, usually pre-printed with some elements, with small gaps between labels

- **Labels With Marks:** a roll of partially pre-printed labels, with black marks on the backing to distinguish one label from the next

If the wrong Media Type has been selected, Bronco may print and cut in the wrong place on your roll of label stock, or it may give an error.

5.3.3 POST-PRINT ACTION

This option decides whether Bronco will cut your labels from the roll of supply, or take no action after printing, and leave your labels connected to each other.

5.3.4 OCCURRENCE

If you want Bronco to cut your labels, you can also set when the cutter runs: after every label, after identical copies, after a set number of labels, or after each complete print job.

5.4 Options

When needed for troubleshooting, you can adjust the print speed and darkness settings for your Bronco here. The darkness setting controls how much heat is used during the printing process; some printing supplies require different amounts of heat to print with the best quality. Increasing the heat can clear up problems with faint or “faded” printing. Lowering the heat may be needed if the ribbon “snaps” or wrinkles during the print.

6. Installing Labeling Software

6.1 Installing DuraSuite Labeling Software

DuraSuite Labeling Software lets you create professional-quality pipe markers, arc flash, NFPA Diamond, RTK, GHS, and custom labels, quickly and easily. To install, from the DuraLabel Bronco startup screen, click on DuraSuite Label Software and follow the directions that appear. Refer to the DuraSuite Labeling Software User Guide for additional information.

6.2 Installing LabelForge Labeling Software

LabelForge Labeling Software lets you design your own custom labels and signs and includes barcode creation tools for 2D and linear barcoding. To install, from the DuraLabel Bronco startup screen, click on LabelForge Label Software and follow the directions that appear. Refer to the LabelForge Labeling Software User Guide for additional information.

NOTE: You may need IT administrator privileges to perform these installations.



800.788.5572 | DuraLabel.com

©2018 Graphic Products, Inc. All Rights Reserved