

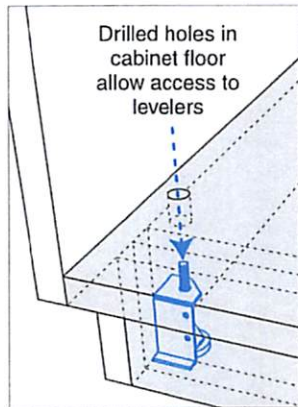
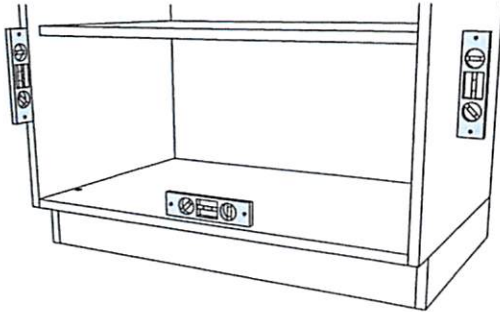


TALL CABINETS

Images Depict Typical Tall Cabinet Assemblies

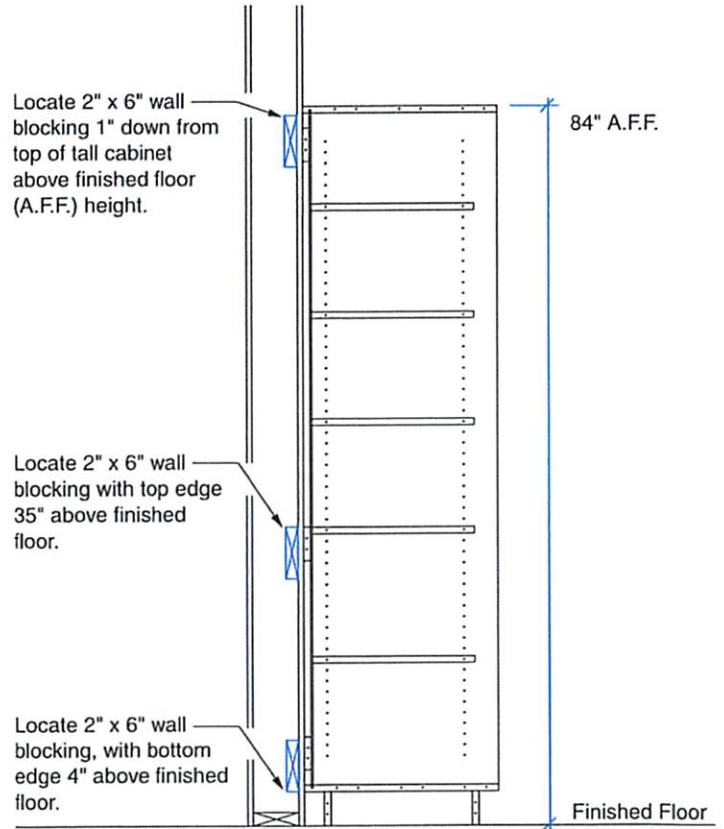
STEP-BY-STEP INSTALLATION

4 Using a level, adjust the Levelers until the sidewall, front edge and cabinet floor are plumb. Insert a 4mm hex wrench through the access holes in the cabinet floor to make the adjustments. Shim as necessary to accommodate irregular wall conditions. Once the adjustments are complete, reinstall the plastic plugs into the access holes.



NOTE:
Turn clockwise to lift,
counterclockwise to lower.

5 Note that internal wall blocking is required for attachment of Tall cabinets to wood and metal stud walls, as illustrated below.



CAUTION!
Never rely on simply anchoring into gypsum, plaster or thin paneling wall. Always fasten into hard areas of masonry walls, studs and internal wall blocking.

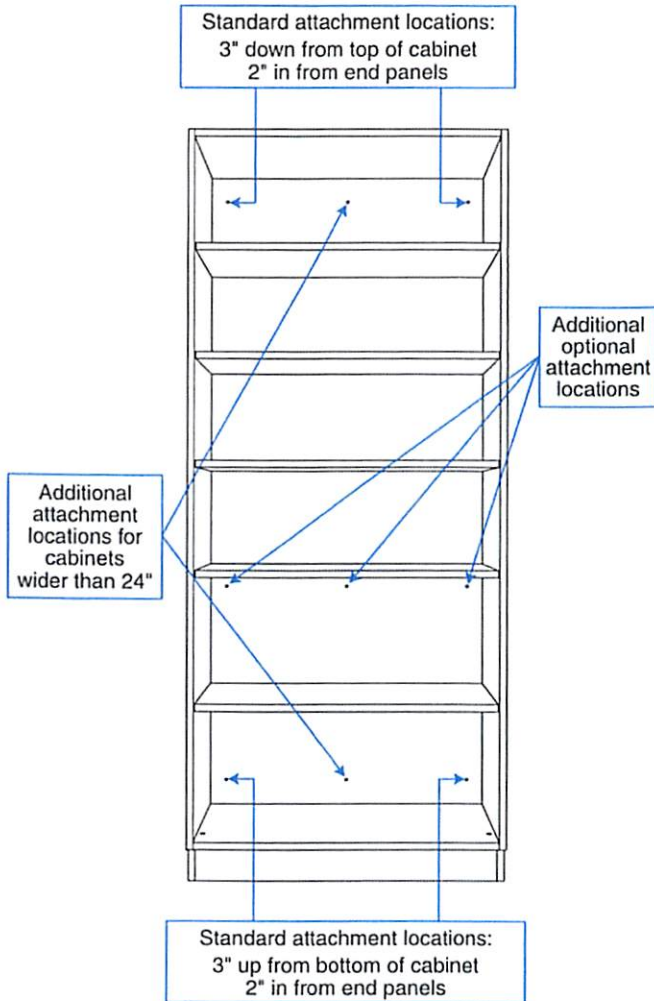
NOTE:
Block or concrete walls require no blocking. Attachment to wall with proper concrete or masonry anchors required.

TALL CABINETS



STEP-BY-STEP INSTALLATION

- ⑥ Note that there is a minimum of four (4) standard locations for attachment of the Tall cabinet to the building structure, as illustrated below. Additional centered locations are recommended for cabinets wider than 24". Anchoring devices (*not provided*) must pass through the Mounting Rails on the back of the cabinet.



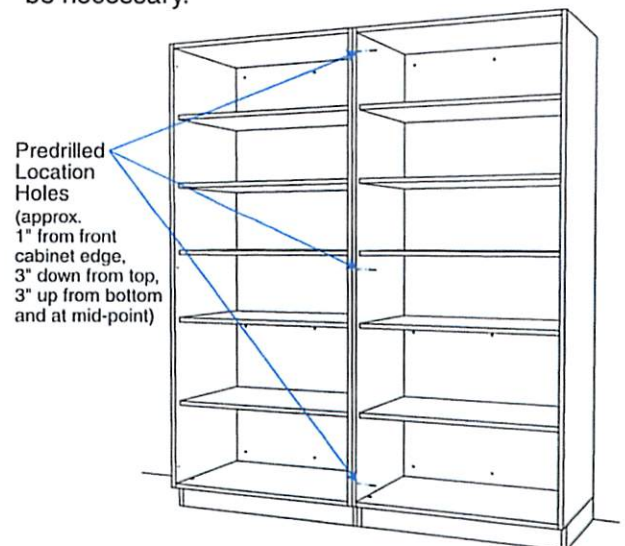
- ⑦ Securely attach cabinet to building structure through the Mounting Rails in the locations illustrated in Step #6.

Fastening anchors (not provided) to be of type suitable for wall structures such as block and concrete, wood stud walls and metal stud walls. Do not attach directly to drywall or thin paneling.

CAUTION!
Never rely on simply anchoring into gypsum, plaster or thin paneling wall. Always fasten into hard areas of masonry walls, studs and internal wall blocking.

IMPORTANT!
Assembly must be securely attached to building structure with anchoring devices of appropriate type, size and quantity in accordance with applicable codes and accepted installation practices.

- ⑧ If additional Tall cabinets were purchased as an assembly, continue to mount the additional units side-by-side, using previous installation steps. Align cabinet bottoms and front vertical edges for a professional appearance. 1 1/4" screws and predrilled location holes have been included to additionally attach cabinet sides together, as may be necessary.



*Hint:
Use clamps to hold cabinets together during this process.*



TALL CABINETS

STEP-BY-STEP INSTALLATION

- 9 Tall cabinets are provided with an unfinished toe kick fascia in anticipation of 4" vinyl base application by flooring contractor, matching room décor.

NOTE:

If vinyl base was purchased from I.D.SYSTEMS™, it has a self-adhesive backing. After removing the protective cover strip, take care to properly position the vinyl base before applying pressure for permanent adhesion.