



Stevens I.D.SYSTEMS™  
800.350.3270  
www.IDSystemsStorage.com



## BASE CABINETS

Images Depict Typical Base Cabinet Assemblies

### STEP-BY-STEP INSTALLATION

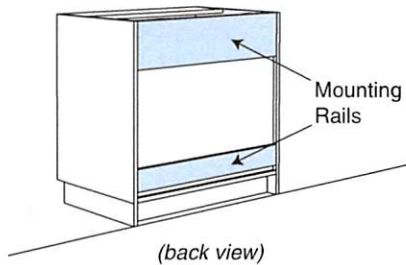
#### ATTENTION

Please unpack and assemble in an area away from children's activities. Remove all tools and excess materials from work area after assembly of unit is complete. Dispose of pallet and packaging materials in an environmentally friendly manner. If any parts are missing or damaged, please call Stevens for immediate parts replacement (1-800-350-3270). When ordering parts, give the Model Number and Color of the unit.

#### NOTE:

*Pulls are preinstalled on the inside of fronts and must be reinstalled on the outside. However, they are shown in their final mounting position on installation drawings.*

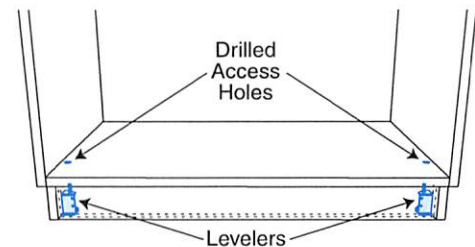
- ① Note that there are two (2) Mounting Rails on the back side of the Base cabinet.



- ② Position cabinet against wall in desired location.

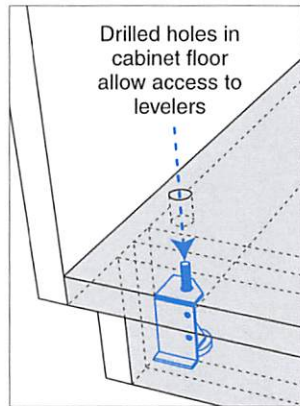
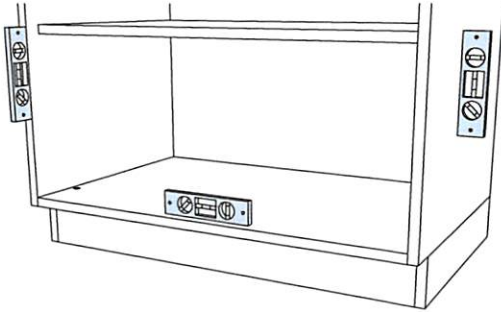


- ③ Note that there are two (2) front corner Levelers located behind the toe kick and accessible through drilled access holes in the cabinet floor. Remove the plastic plugs from the access holes in order to perform the leveling adjustments in the next step.



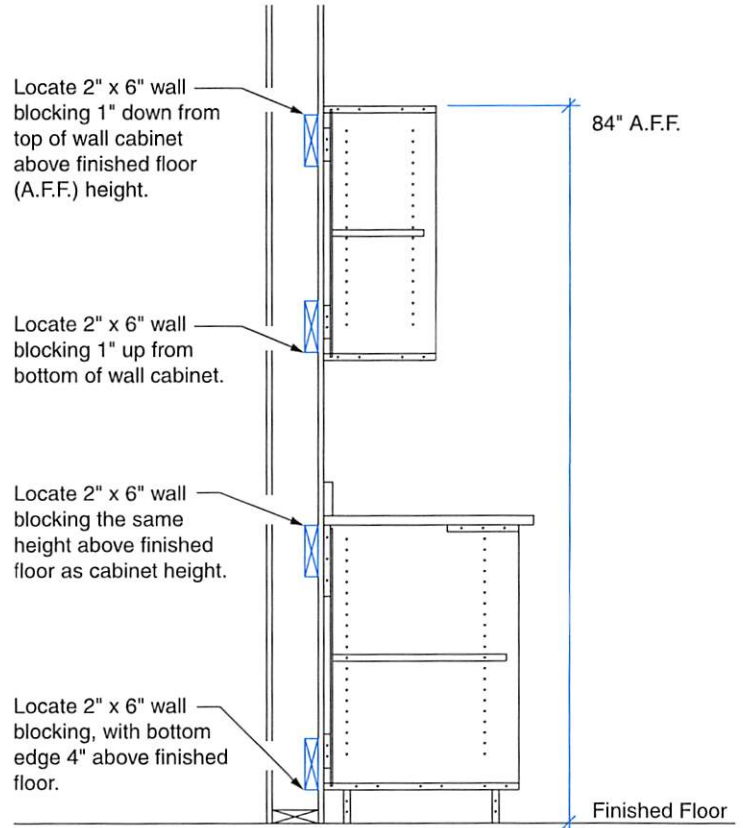
## STEP-BY-STEP INSTALLATION

- 4** Using a level, adjust the Levelers until the sidewall, front edge and cabinet floor are plumb. Insert a 4mm hex wrench through the access holes in the cabinet floor to make the adjustments. Shim as necessary to accommodate irregular wall conditions. Once the adjustments are complete, reinstall the plastic plugs into the access holes.



**NOTE:**  
Turn clockwise to lift,  
counterclockwise to lower.

- 5** Note that internal wall blocking is required for attachment of Base cabinets to wood and metal stud walls, as illustrated below.



**CAUTION!**  
Never rely on simply anchoring into gypsum, plaster or thin paneling wall. Always fasten into hard areas of masonry walls, studs and internal wall blocking.

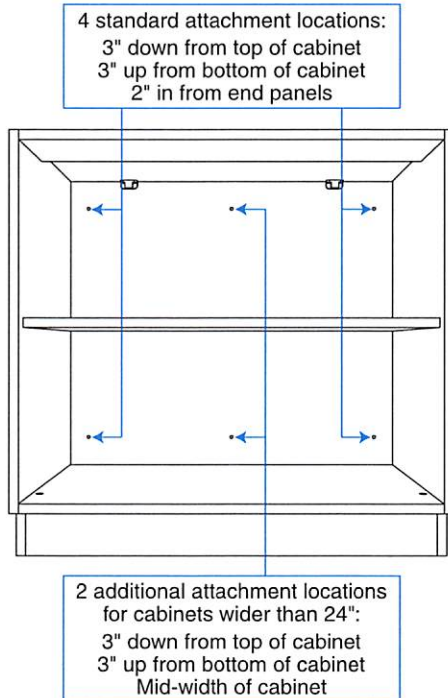
**NOTE:**  
Block or concrete walls require no blocking. Attachment to wall with proper concrete or masonry anchors required.

# BASE CABINETS



## STEP-BY-STEP INSTALLATION

- 6 Note that there is a minimum of four (4) standard locations for attachment of the Base cabinet to the building structure, as illustrated below. Two (2) additional mid-point locations are recommended for cabinets wider than 24". Anchoring devices (*not provided*) must pass through the Mounting Rails on the back of the cabinet.



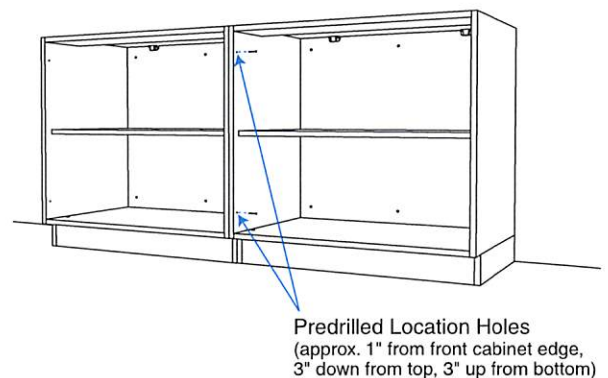
- 7 Securely attach cabinet to building structure through both Mounting Rails, in the locations illustrated in Step #6.

*Fastening anchors (not provided) to be of type suitable for wall structures such as block and concrete, wood stud walls and metal stud walls. Do not attach directly to drywall or thin paneling.*

**CAUTION!**  
*Never rely on simply anchoring into gypsum, plaster or thin paneling wall. Always fasten into hard areas of masonry walls, studs and internal wall blocking.*

**IMPORTANT!**  
*Assembly must be securely attached to building structure with anchoring devices of appropriate type, size and quantity in accordance with applicable codes and accepted installation practices.*

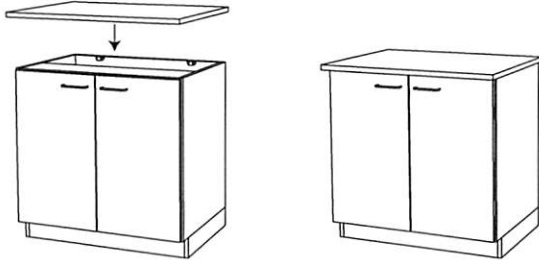
- 8 If additional Base cabinets were purchased as an assembly, continue to mount the additional units side-by-side, using previous installation steps. Align cabinet bottoms and front vertical edges for a professional appearance. 1 1/4" screws and predrilled location holes have been included to additionally attach cabinet sides together, as may be necessary.



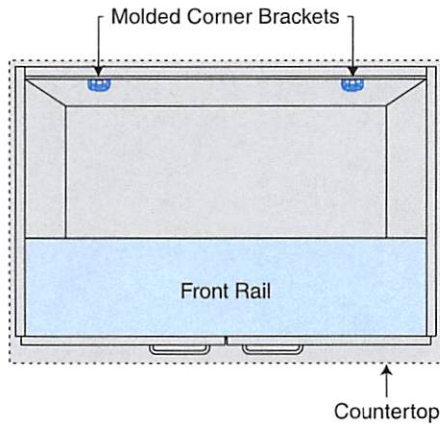
**Hint:**  
*Use clamps to hold cabinets together during this process.*

## STEP-BY-STEP INSTALLATION

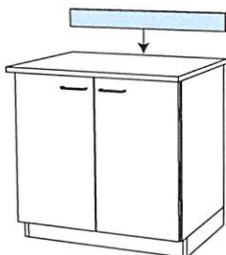
- 9 A. FOR LAMINATE COUNTERTOP:**  
Place Countertop on top of Base cabinet, centering it side-to-side and positioning firmly against the building structure.



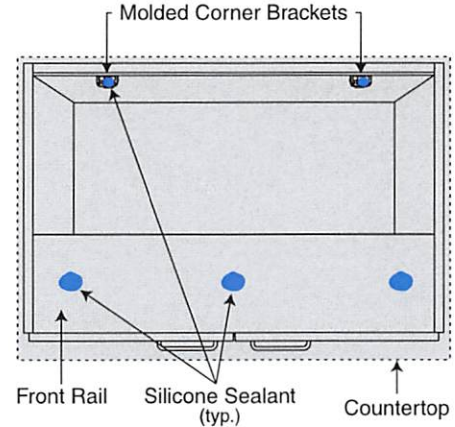
- B. Attach Countertop to Base cabinet, using 1 1/4" screws through the Front Rail and into the bottom of Countertop AND using 3/4 x 8 flat head screws through the Molded Corner Brackets at the upper rear of the cabinet and into the bottom of the Countertop.**



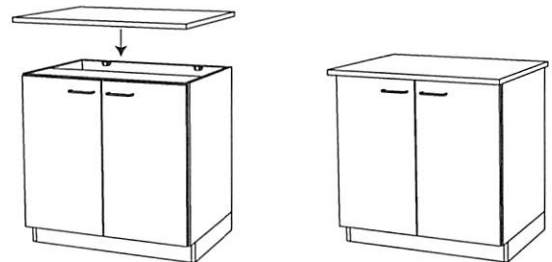
- C. Mount Backsplash (if purchased) to Countertop and Back Wall with silicone sealant. Carefully caulk bottom joint edge of Countertop to Backsplash.**



- 10 A. FOR PHENOLIC OR EPOXY COUNTERTOP:**  
Phenolic and Epoxy Countertops do not use screws but are held in place with silicone sealant. Apply sealant to Base cabinet Front Rail and Molded Corner Brackets, as illustrated below.



- B. Place Countertop on top of Base cabinet, centering it side-to-side and positioning firmly against the building structure. Clamp Countertop down to Front Rail, if required.**



- 11** Base cabinets are provided with an unfinished toe kick fascia in anticipation of 4" vinyl base application by flooring contractor, matching room décor.

**NOTE:**

*If vinyl base was purchased from I.D.SYSTEMS™, it has a self-adhesive backing. After removing the protective cover strip, take care to properly position the vinyl base before applying pressure for permanent adhesion.*