

**SPARE PARTS CATALOGUE**  
**SURFACE PREPARATION EQUIPMENT: HUSQVARNA PG 280**

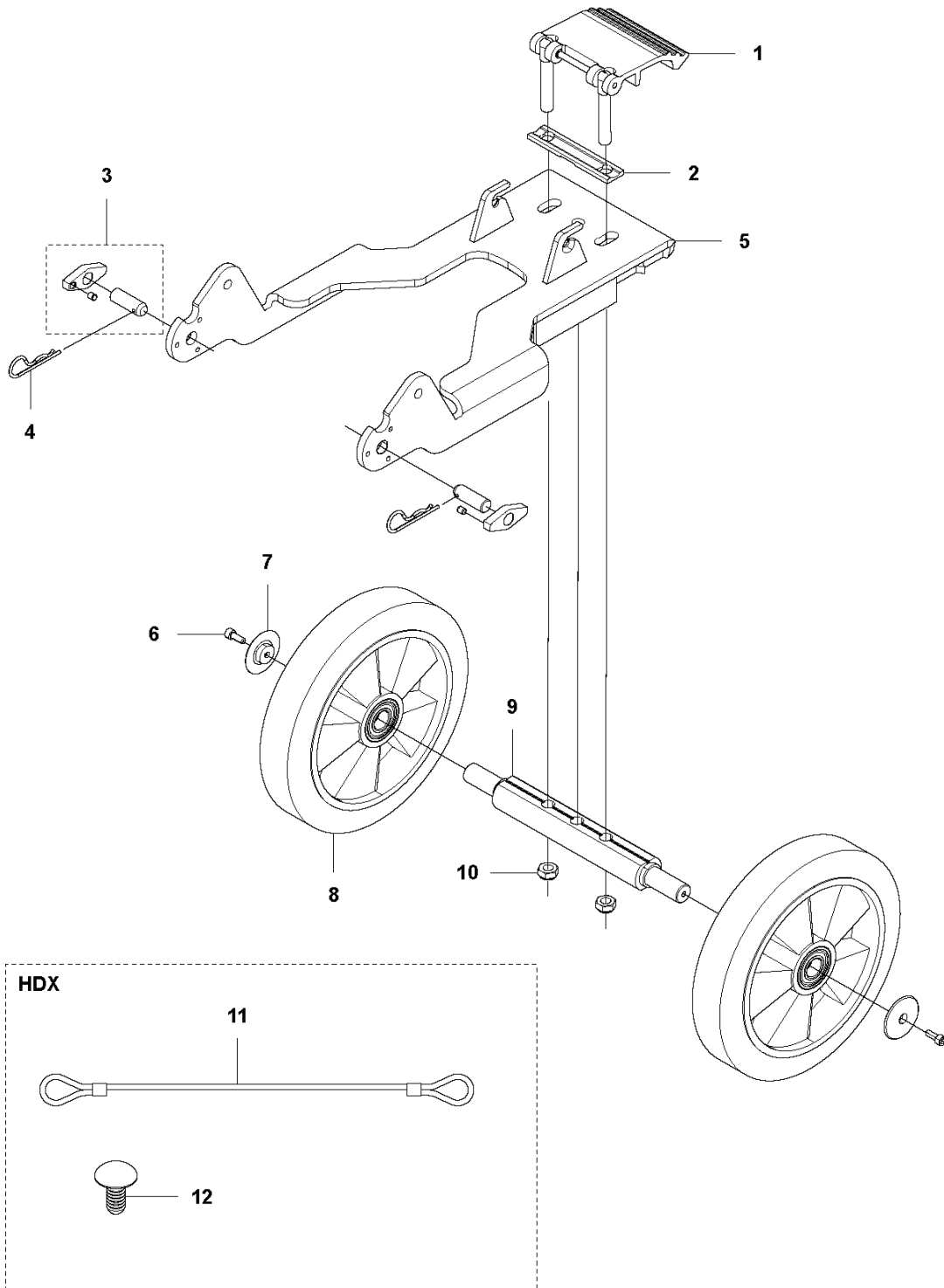
Spare Parts List

# **SPARE PARTS LIST**

SURFACE PREPARATION EQUIPMENT

HUSQVARNA PG 280

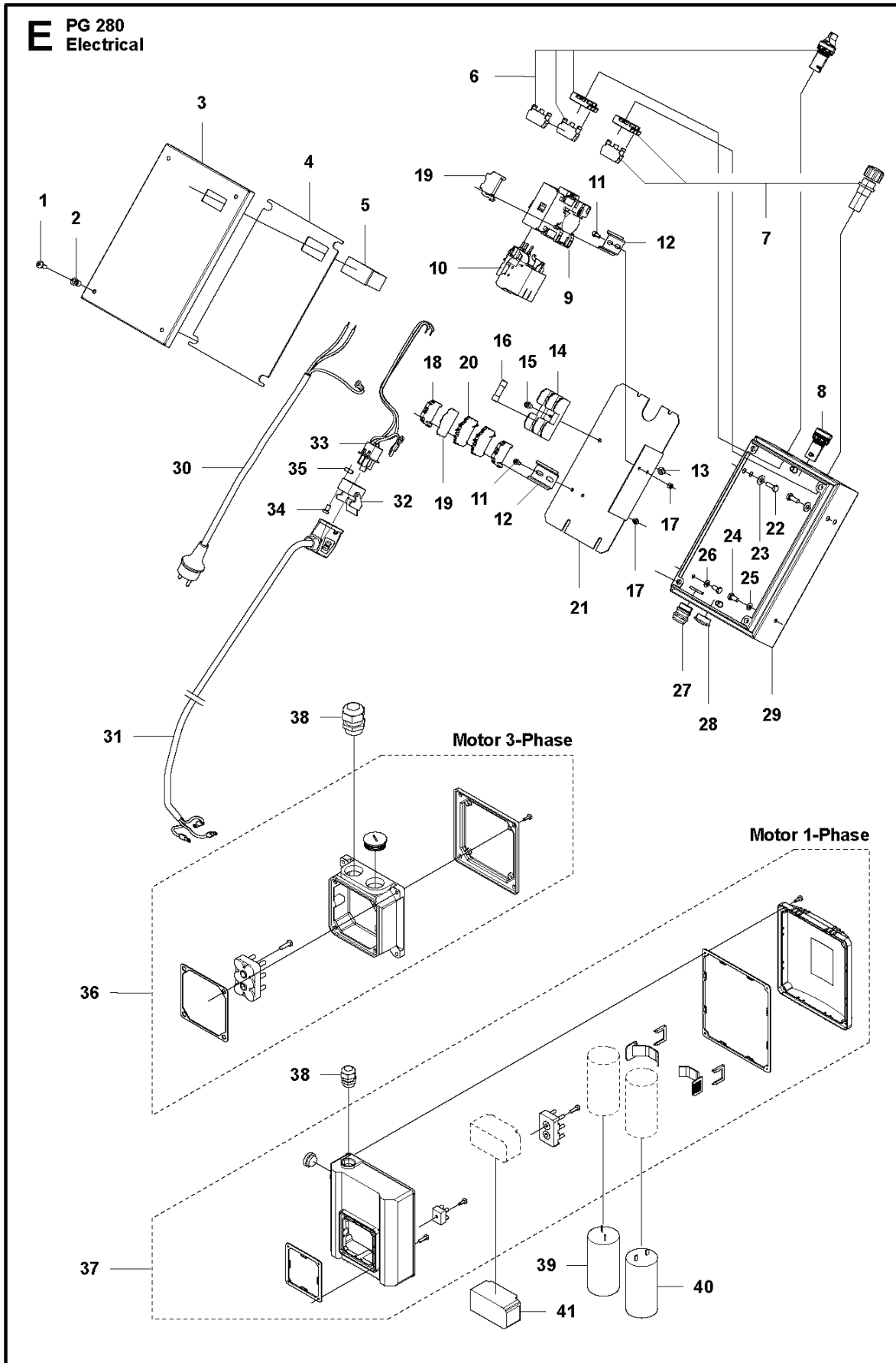
**C** PG 280  
Chassi



## SURFACE PREPARATION EQUIPMENT

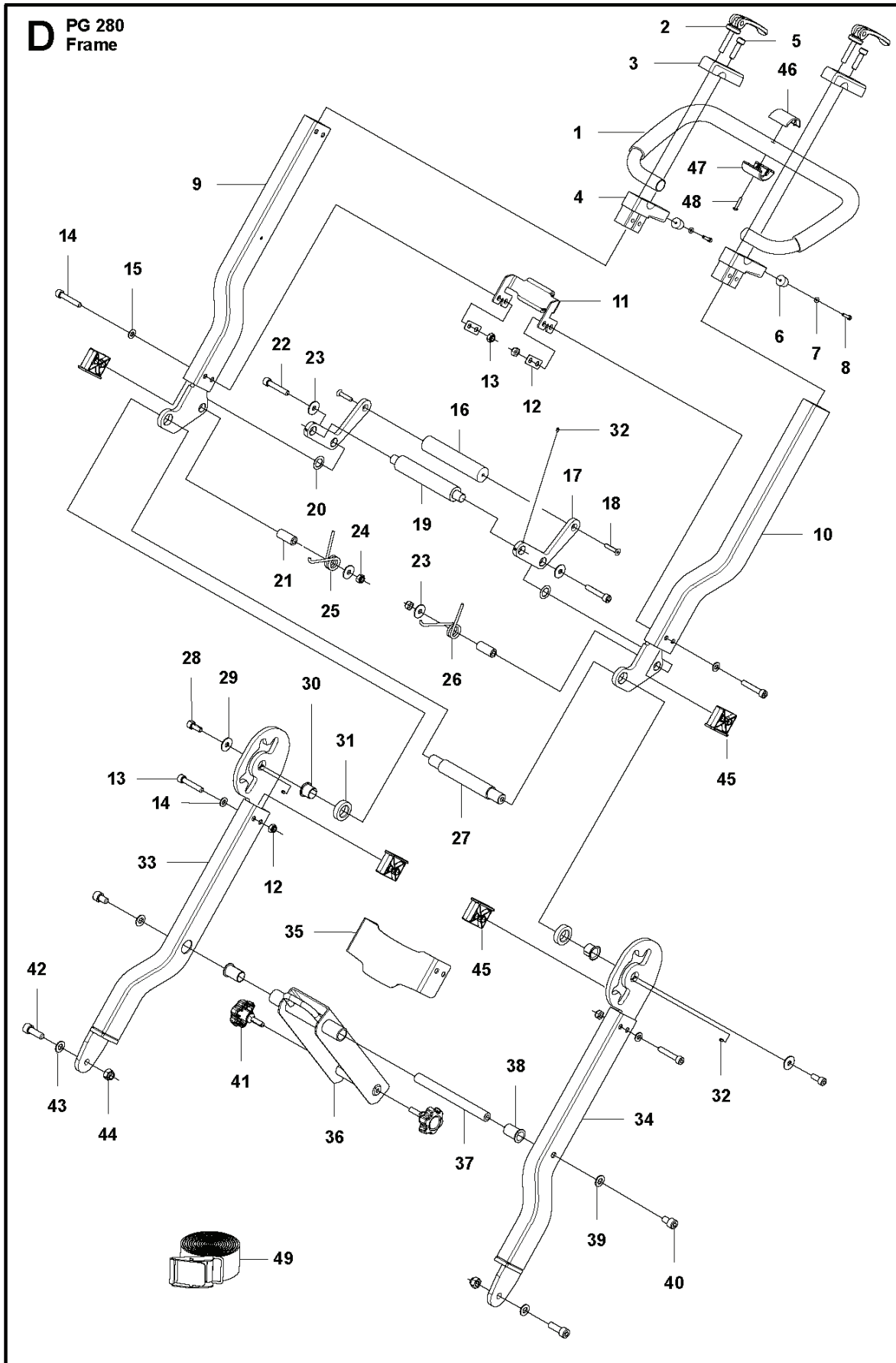
---

PXM_REF	PXM_PARTNO	DESCRIPTION	PXM_REMARK	QTY.
1	587032901	PEDAL ASSY		1
2	586927501	WASHER		1
3	586991701	BOLT		2
3	586991703	BOLT	HDX variant only	2
4	721680251	SPRING COTTER		2
5	585140501	FRAME		1
6	725536851	SCREW IHSCM		2
7	501321201	WASHER		2
8	504185501	WHEEL		2
9	585141201	AXLE		1
10	732252201	HEXAGON LOCKING NUT		2
11	586296401	WIRE	HDX variant only	4
12	586829101	RIVET	HDX variant only	6



SURFACE PREPARATION EQUIPMENT

PXM_REF	PXM_PARTNO	DESCRIPTION	PXM_REMARK	QTY.
1	724136851	SCREW CRPANM		4
2	521886601	RIVET		4
3	586474301	LID		1
3	586474303	LID	HDX version only	1
4	586467001	SEALING	Attach with double-sided tape	1
5	584296301	HOUR METER		1
6	586991501	SWITCH KIT		1
7	586991601	SWITCH KIT		1
8	584297101	LAMP	230V	1
8	584297102	LAMP	110V	1
8	584297103	LAMP	400V	1
9	585365803	CONTACTOR	400-480V, 50/60Hz	1
9	585365801	CONTACTOR	200-230V, 50/60Hz	1
9	585365802	CONTACTOR	100-120V, 60Hz	1
9	586991801	CONTACTOR	100-120V, 50Hz	1
10	584297806	RELAY	3 phase	1
10	584297801	RELAY	1 phase, 220-240V, 60Hz	1
10	580623502	PROTECTION		1
10	580623501	PROTECTION	1 phase, 100-120V, 60Hz	1
11	725532501	SCREW IHSCM		4
12	522747001	RAIL		2
13	731231601	HEXAGON NUT		1
14	525882601	FUSE HOLDER		1
15	725536455	SCREW IHSCM		1
16	525638101	FUSE		2
17	732251401	HEXAGON LOCKING NUT		4
18	585366105	TERMINAL BLOCK		3
19	585366103	TERMINAL BLOCK		1
19	585366107	TERMINAL BLOCK	US 1ph 100-120V	1
20	585613501	TERMINAL BLOCK	2pcs for 1ph and 3pcs for 3ph machines	2
20	585366101	TERMINAL BLOCK	US 1ph 100-120V	2
21	585593801	PLATE		1
22	725245171	SCREW EHHM		4
23	734116301	WASHER		4
24	725236671	SCREW EHHM		2
25	734115201	WASHER		1
26	735215301	LOCKWASHER		1
27	575489801	GROMMET		1
27	587101201	GROMMET	US 1-Phase	1
28	586586901	PLUG		1
28	586586902	PLUG	US 1-Phase	1
29	586474201	BOX		1
29	586474202	ELECTRONIC BOX	HDX version only	0
30	586236803	CABLE	1 phase	1
30	586237801	CABLE	3 phase	1
30	586236802	CABLE	1 phase, AUS	1
30	586236815	CABLE	1 phase, UK	1
30	586236812	CABLE	1 phase, US 120V	1
30	586236813	CABLE	1 phase, US 240V	1
30	586236808	CABLE	1 phase BR	1
31	585638107	CABLE	3 phase	1
31	585638108	CABLE	1 phase, UK and JP	1
31	585638110	CABLE	1 phase US/CAN 220-240V	1
31	585638111	CABLE	1 phase US/CAN 100-120V	1
32	587061501	CONNECTOR		1
33	590503501	CONNECTOR		1
34	725522401	SCREW		2
35	732251001	HEXAGON LOCKING NUT		2
36	587173902	ELECTRONIC BOX	3 Phase	1
37	587173901	ELECTRONIC BOX	1 ph 230V, 50Hz	1
38	587174202	GROMMET	3 Phase	1
38	587174201	GROMMET	1 phase	1
38	587163301	GROMMET	1ph 100-120V kit	1
39	587174501	CAPACITOR	208-230V, 50/60 Hz	1
39	587174502	CAPACITOR	110V, 50/60 Hz	1
40	587174401	CAPACITOR	230V, 50Hz	1
40	587174402	CAPACITOR	208-230V, 60 Hz	1
40	587174403	CAPACITOR	110V, 50/60 Hz	1
41	587174301	SWITCH	230V, 50Hz	1
41	587174302	SWITCH	208-230V, 60Hz	1
41	587174303	SWITCH	110V, 50-60 Hz	1

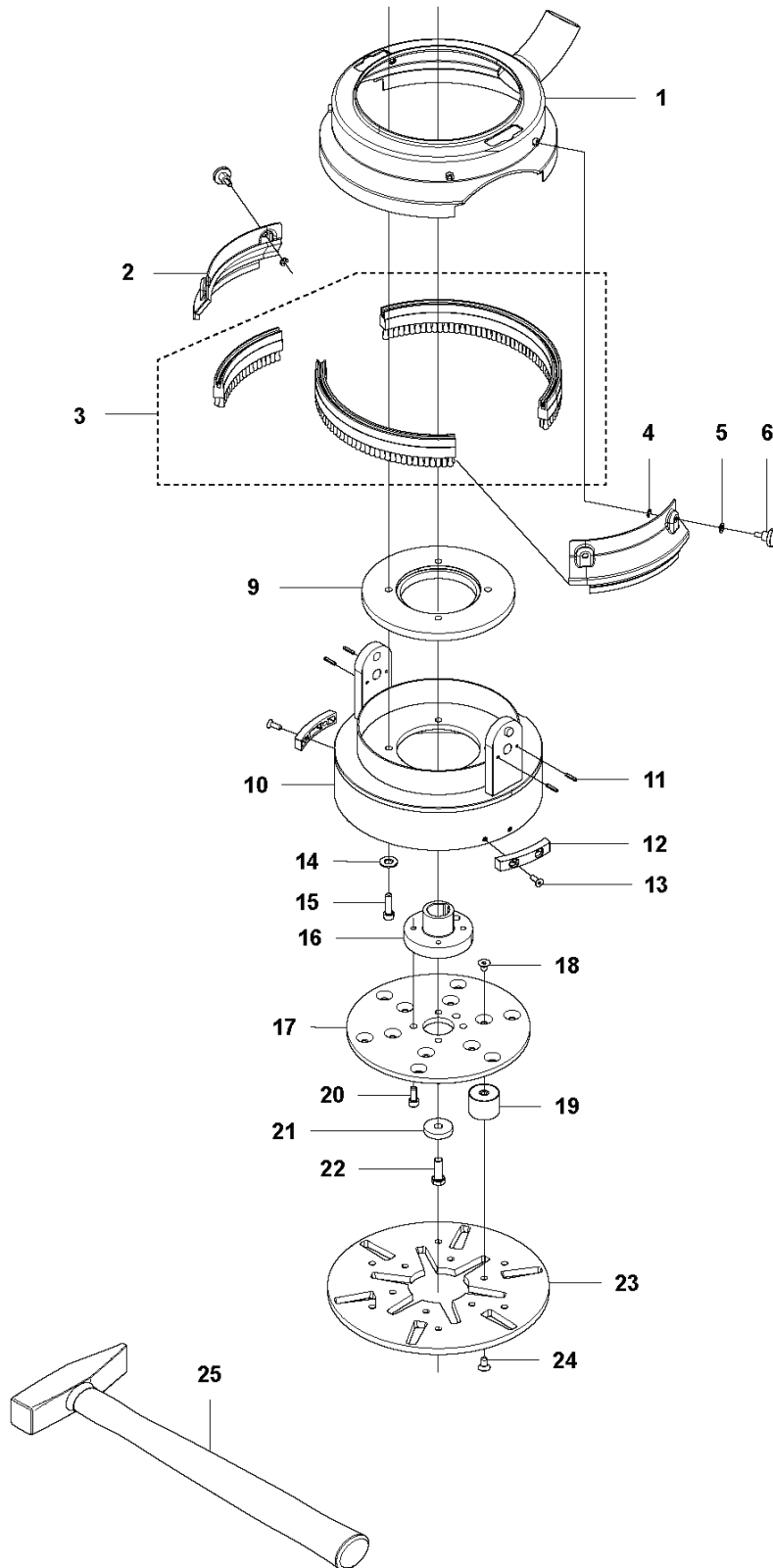


SURFACE PREPARATION EQUIPMENT

PXM_REF	PXM_PARTNO	DESCRIPTION	PXM_REMARK	QTY.
1	585144001	HANDLE		1
2	585129201	LOCKING HANDLE		2
3	585516601	BRACKET		2
4	585516701	BRACKET		2
5	725545521	SCREW IHSCM		2
6	585516801	RUBBER SHOE		2
7	734113601	WASHER		2
8	725529501	SCREW IHSCM		2
9	585573501	FORK		1
10	585573502	FORK		1
11	585382802	BRACKET		1
12	585383101	WASHER		2
13	732251801	HEXAGON LOCKING NUT		8
14	725546001	SCREW IHSCM		8
15	734116301	WASHER		8
16	585133702	HANDLE		1
17	585133301	PLATE		2
18	725637451	SCREW		2
19	585133802	ROD		1
20	585416201	WASHER		2
21	585383301	SLEEVE		2
22	725546101	SCREW IHSCM		2
23	734116541	WASHER		4
24	732251801	HEXAGON LOCKING NUT		2
25	585417301	SPRING		1
26	585416101	SPRING		1
27	585133602	TUBE		1
28	725545101	SCREW IHSCM		2
29	734116541	WASHER		2
30	585416001	BUSH		2
31	585133501	SPACER		2
32	728828501	SCREW IHSETM		6
33	585162101	FORK		1
34	585162102	FORK		1
35	585383002	BRACKET		1
35	585383004	BRACKET	HDX variant only	1
36	585141801	SUPPORT		1
37	585129001	TUBE		1
38	585129101	BUSH		2
39	734117201	WASHER		2
40	725548901	SCREW IHSCM		2
41	586912801	KNOB		2
42	725549501	SCREW IHSCM		2
43	734117201	WASHER		2
44	732252001	HEXAGON LOCKING NUT		2
45	585132901	SPACER		4
46	587158501	COVER		1
47	587158601	COVER		1
48	729526171	SCREW CRPANT		1
49	584618701	STRAP		1



**B** PG 280  
Grinding Head

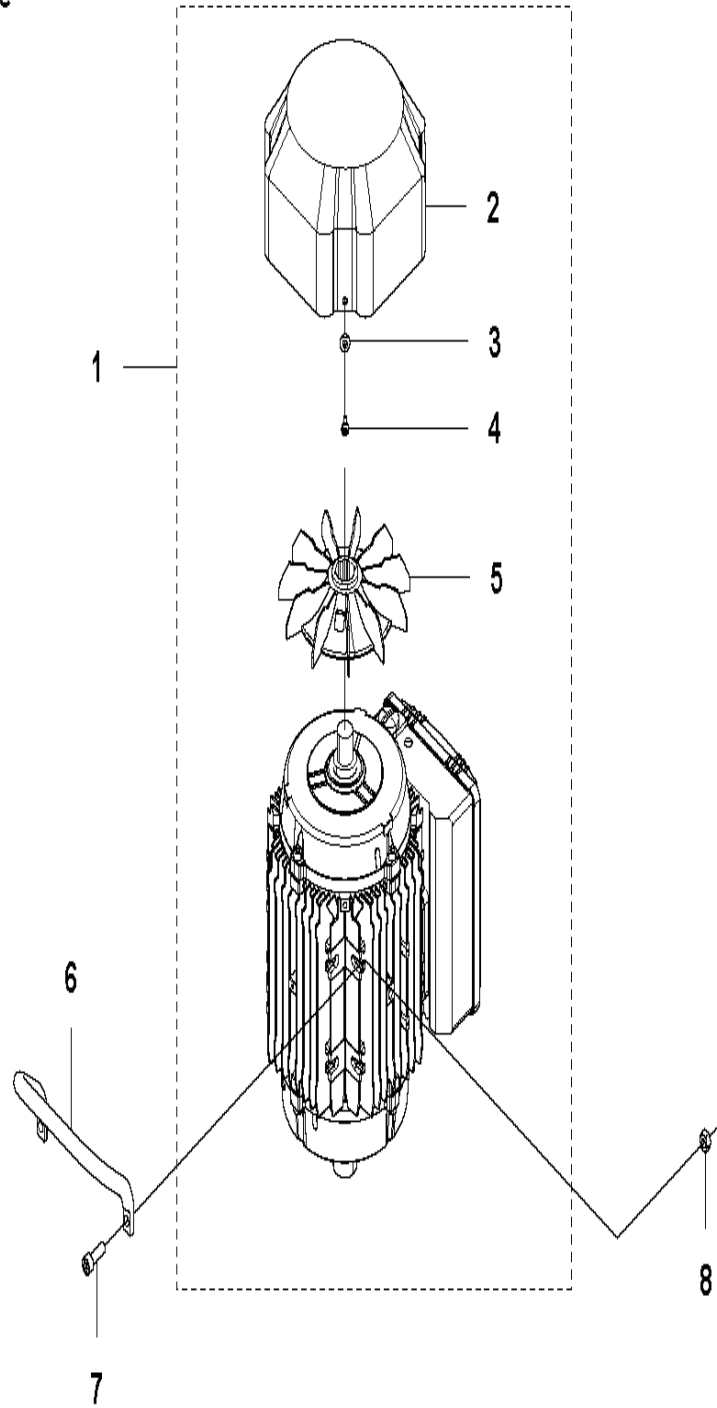


## SURFACE PREPARATION EQUIPMENT

---

PXM_REF	PXM_PARTNO	DESCRIPTION	PXM_REMARK	QTY.
1	585138701	COVER		1
2	586999301	COVER LID		2
3	582639901	BRUSH KIT		1
4	735583501	WASHER		4
5	734115260	WASHER		4
6	510361601	SCREW		4
9	585524402	SPACER		1
10	585128301	MOUNTING PLATE		1
10	585128302	MOUNTING PLATE	HDX variant only	1
11	721425601	SPRING PIN		4
12	585411102	BRACKET		2
13	725636901	SCREW IHCSFM		4
14	734116301	WASHER		4
15	725545521	SCREW IHSCM		4
16	585514701	HUB		1
17	510213001	ATTACHMENT PLATE		1
18	725644755	SCREW IHCSFM		6
19	510213101	DAMPER		6
20	725545155	SCREW IHSCM		4
21	510235101	WASHER		1
22	725249571	SCREW EHHM		1
23	586796701	HOLDER		1
24	725644955	SCREW IHCSFM		6
25	522039701	HAMMER		1

**A** PG 280  
Motor 1-Phase

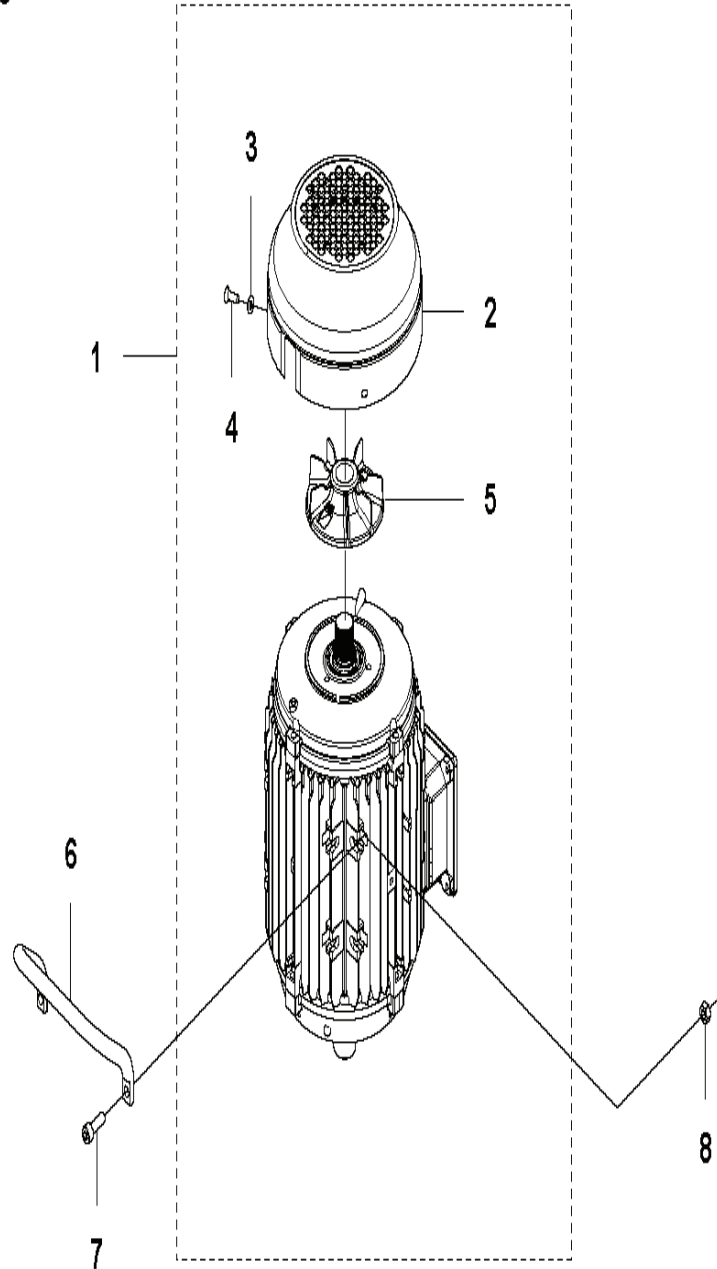


## SURFACE PREPARATION EQUIPMENT

---

PXM_REF	PXM_PARTNO	DESCRIPTION	PXM_REMARK	QTY.
1	585301901	MOTOR	220-240V, 50Hz	1
1	585301902	MOTOR	220-240V, 60Hz	1
1	585302102	MOTOR	100-120V, 60Hz	1
2	587174601	FAN COVER		1 1
3	734114601	WASHER		4 1
4	724132301	SCREW CRPANM		4 1
5	587174701	FAN		1 1
6	585423301	HANDLE		1
7	725545101	SCREW IHSCM		2
8	731231801	HEXAGON NUT		2

**A** PG 280  
Motor 3-Phase



## SURFACE PREPARATION EQUIPMENT

---

PXM_REF	PXM_PARTNO	DESCRIPTION	PXM_REMARK	QTY.	
1	585263901	MOTOR	3 phase, 400V, 50Hz	1	
2	587174603	FAN COVER		1	1
3	734114601	WASHER		3	1
4	724132301	SCREW CRPANM		3	1
5	587174703	FAN		1	1
6	585423301	HANDLE		1	
7	725545101	SCREW IHSCM		2	
8	731231801	HEXAGON NUT		2	