

S50 DOWN LIGHT

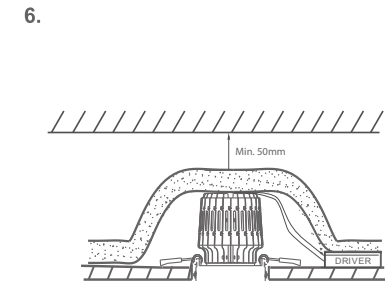
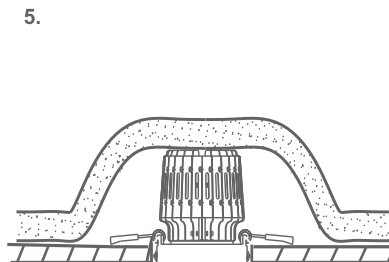
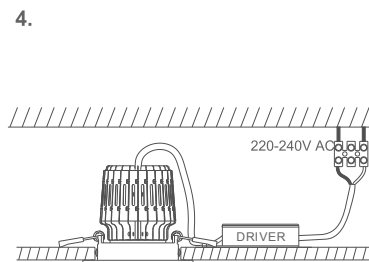
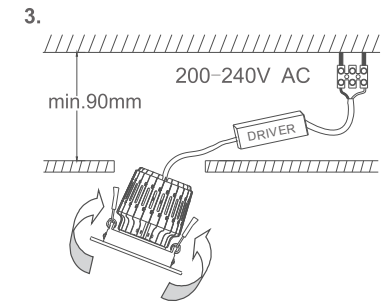
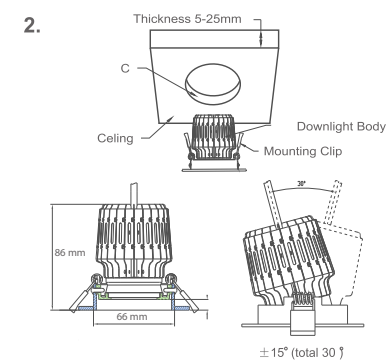
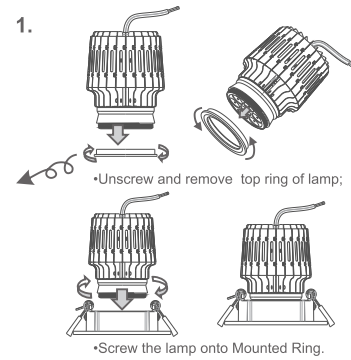


COLOUR	CODE	LENS	BEAM ANGLE	LUMENS
WARM WHITE 2700K	BL-DL-106-27	Clear	60°	900lm
WARM WHITE 3000K	BL-DL-106-WW	Clear	60°	950lm
	BL-DL-106F-WW	Frosted	Wide	850lm
NATURAL WHITE 4000K	BL-DL-106-NW	Clear	60°	1000lm

MOUNTING TRIM SOLD SEPARATELY
50W HALOGEN EQUIVALENT

LED WATTS	9W	DIMENSIONS	Module Ø55 x H70mm Dimmable Driver W46 x H30 x L110mm
SYSTEM WATTS	11W	HOUSING	Pressed stainless steel heatsink
VOLTS	220–240V AC 50/60Hz input	MOUNTING	For use with Bright Light mounting trims
OPERATING TEMP.	-35°C ~ +70°C	INGRESS PROTECTION	Indoor use only
CRI	90	CONNECTION METHOD	External driver with concealed screw terminals
SOURCE LIFE	50,000 hours	CONTROL	Dimmable Trailing edge or universal dimmer
WARRANTY	3 years		
COMPLIANCE			

INSTRUCTIONS



SAFETY NOTES

- Switch off the electricity at the mains before commencing installation.
- Connect to a 220-240V AC supply in accordance with NZ regulation.
- Make sure all connections are tight with no loose strands.
- Ensure fire regulations are not breached when fitting downlight.

WARNING

- Indoor use only.
- Please ensure the packaging is disposed of safely.
- If any cable is defective, do not use.
- Do not connect the light fixture to the mains power directly.
- Only a registered electrician should install this product.

FIRE RISK

Required clearance from structural members and building elements is 75mm SCB (side clearance to building element) and 50mm HCB (height clearance to building element).

THERMAL INSULATION

IC Rating Abutted & Covered

This product is suitable for use with building insulation that can safely be continually exposed to temperatures up to 90°C and must withstand a 30s needle flame test carried out in accordance with AS/NZS 60695.11.5 with the flame applied to all surfaces of the sample. Glass fiber insulation is a suitable insulation for use abutting this luminaire.

COMPLIANCE

This lamp and driver have been tested to the requirements of amendment A, national differences for LED lamp AS/NZS 60598.2.2 & national differences for driver AS/NZS 61347.1

