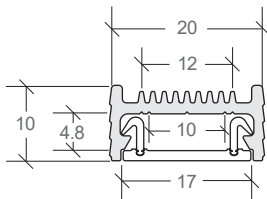
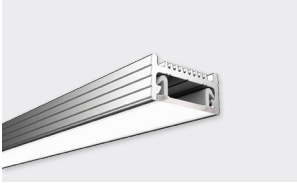


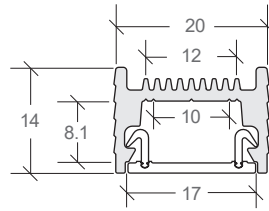
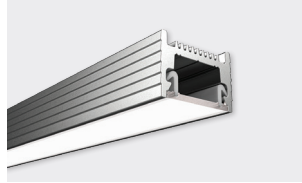
## FRICTION-FIT

LOWLINE 01 MINI



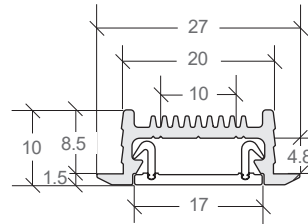
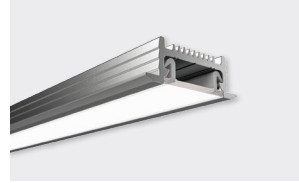
REBATE DEPTH 10MM

LOWLINE 01



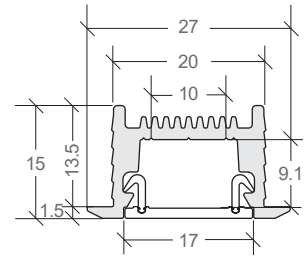
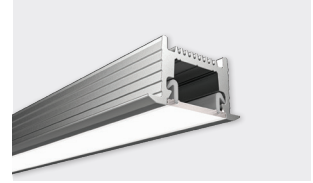
REBATE DEPTH 14MM

LOWLINE 02 MINI



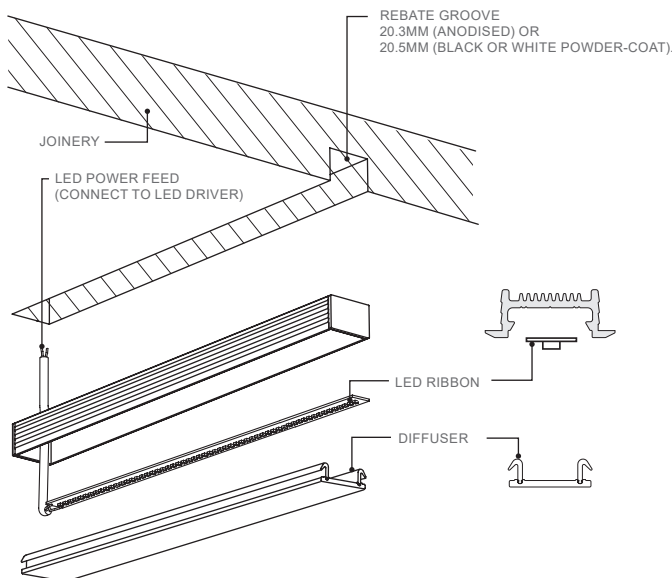
REBATE DEPTH 8.5MM

LOWLINE 02



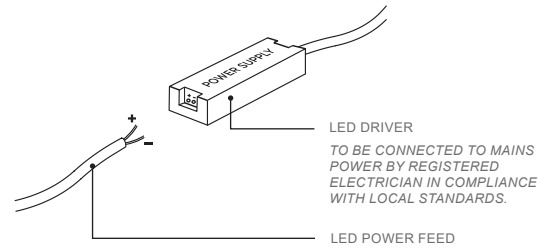
REBATE DEPTH 13.5MM

### A. PROFILE FRICTION-FIT INSTALLATION



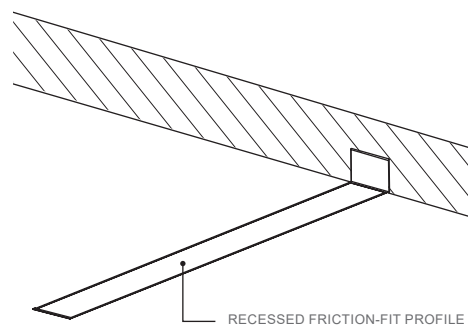
1. Router a rebate groove of 20.3mm (anodised) or 20.5mm (black or white powder-coat).  
*This needs to be tight enough for the friction-fit teeth to grip - Bright Light recommends testing first to ensure a good fit.*
2. Remove diffuser (if preattached) by peeling out from end.
3. Drill cable entry hole in profile for LED power feed.
4. **IMPORTANT** - Before mounting LED strip, clean profile using an alcohol based cleaner.
5. Remove 3M paper from LED strip. Use the guide lines at the back of the profile as a guide to mount the LED strip.
6. Thread LED power feed through profile hole, ensuring it is protected from sharp profile edges e.g. heatshrink or similar.
7. Attach diffuser to profile by clicking in securely.

### B. MAKE ELECTRICAL CONNECTION



1. Connect LED power feed to LED driver.

### C. SLOT PROFILE INTO REBATE GROOVE



1. Slot assembled profile into rebate groove and press firmly until flush with surface. Friction-fit edging will ensure profile is held securely.