



Panoray™

FREE BEND
WALL WASHER LIGHTING

Panoray™ 3525B

AB2J

NEON
XTRA

Panoray™

BRIGHTLIGHT

CLEAR

0800 952 000 | www.brightlight.co.nz



NEON XTRA

LED NEON produced by Clear Lighting and distributed by Bright Light, is a broad range of silicone encapsulated LED ribbons.

NEON is perfect for commercial applications where high-quality lighting is required. Modern LED technology offers a durability that surpasses the traditional glass product, injection moulded connections offer up to IP68 protection, and the silicone casing provides UV and flame resistance while distributing uniform light.

On occasion, a project asks for more – Bright Light proudly introduces **NEON XTRA**, a highly specialised, application specific range of Neon products designed for niche applications.

The Neon Xtra range includes:

- **Luxpave™** – In-ground, drive-over luminaire systems
- **Transportation Lighting** for applications like road bridges
- **SafeGlo™** – Hazardous environment applications
- **ThermGlo™** – Designed for Sauna & steam rooms
- **Panoray™** – Freebend, high-powered wall washer luminaires



PANORAY™ FREE BEND WALL WASHER LIGHTING

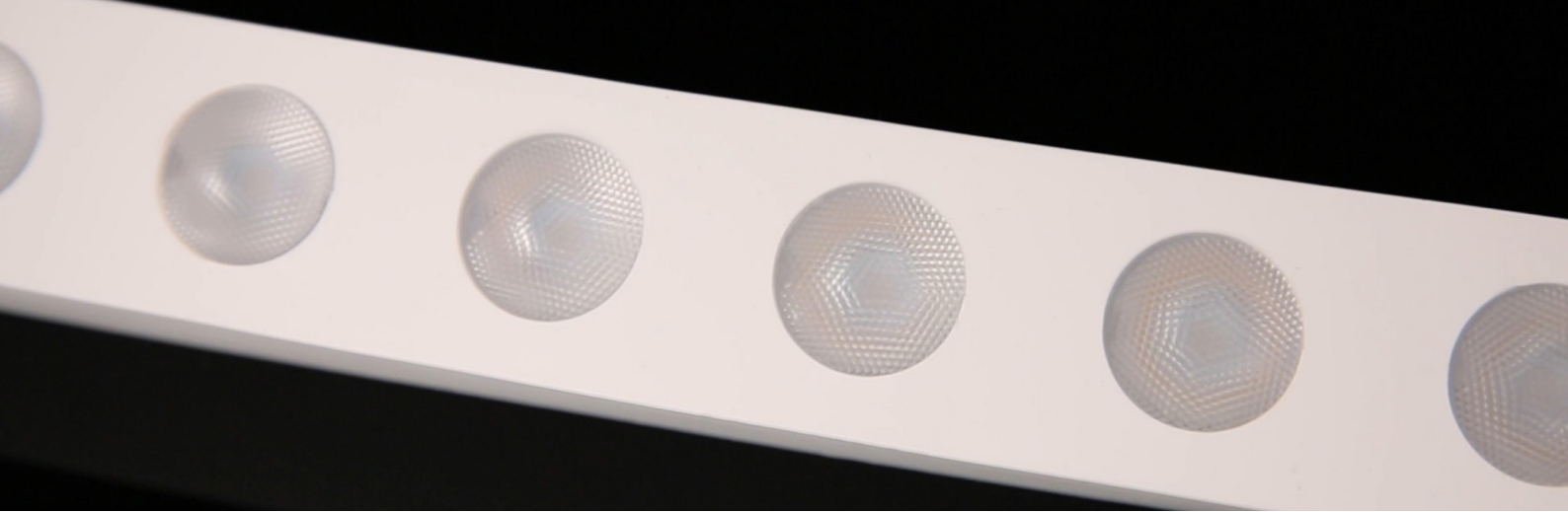
The Panoray free bend wall washer is an encapsulated LED with enclosed, individual lenses allowing free movement both vertically and horizontally.

The advanced optic configuration allows for smooth wall washing with various beam angle options available. Panoray is ideal for illuminating vertical spaces in unique applications such as columns and curved facades.

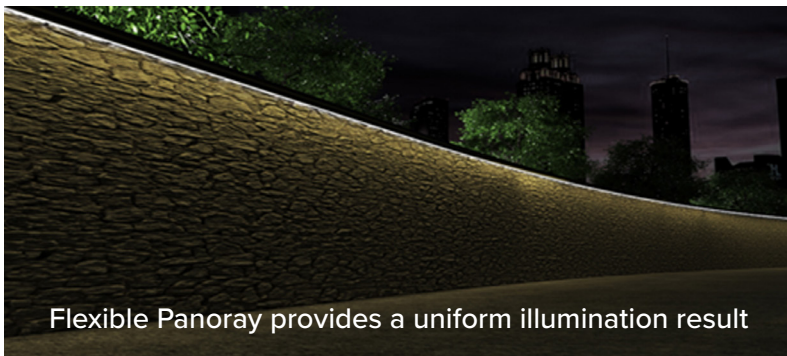
FEATURES

- Free bend – each luminaire can bend both vertically and horizontally.
- Free cut on site - the enclosed lenses within the luminaire allows a cutting solution that won't affect the overall IP rating of the fitting.
- Waterproof DIY connector for easy on-site installation.
- Available in white or black silicone casing
- Lens available in symmetric: 15° , 25° and elliptical: 18×25°, 18×40°, 20×55°





Non-flexible linear products cause uneven lighting



Flexible Panoray provides a uniform illumination result

