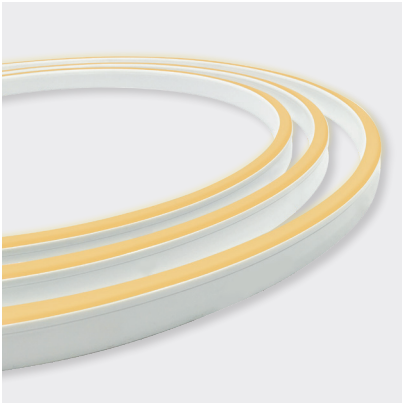


EX-STOCK
PRODUCT

NEON EDGE | WHITE | PVC



With the introduction of our indent range of Silicone encapsulated Neon LED ribbon, our local, end of line PVC stock is available with 3 year warranty using local connectors.

Neon Edge is a sleek W11.5 × H21mm model perfect for cove lighting, handrails, or architectural features in exterior and interior applications.

Stock quantities vary - Talk to our team.
For more options consider our indent silicone Neon range - lead times apply.

APPLICATIONS

- Cove lighting, handrails, or toekicks
- Architectural features
- Exterior or interior installations

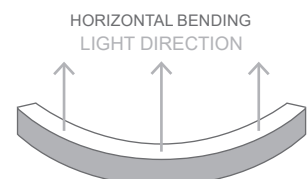
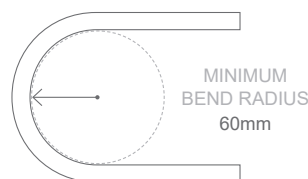
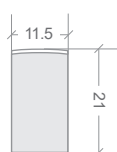
FEATURES

- Suitable for use around salt or chlorinated water

COLOUR	CODE	LUMENS
WARM WHITE 2700K +/- 145K	BL-LS-4000-27	≥280lm/m
WARM WHITE 3000K +/- 175K	BL-LS-4000-30	≥280lm/m
NATURAL WHITE 4000K +/- 275K	BL-LS-4000-40	≥320lm/m
COOL WHITE 5000K +/- 300K	BL-LS-4000-50	≥320lm/m

ELECTRICAL & OPTICAL DATA VARIANCE +/- 10%
SOLD BY THE METRE
IES FILES AVAILABLE

LED WATTS	12W/m	MINIMUM BEND RADIUS	60mm
CRI	≥80	BEND DIRECTION	Horizontal bending
INPUT VOLTS	24V DC constant voltage	DIMENSIONS	W11.5 × H21mm
OPERATING TEMP.	-20°C ~ +45°C	INGRESS PROTECTION	Up to IP67 Protection established by use of connection type <i>SEE PAGE 2.</i>
MAX. RUN PER POWER FEED	10m using one feed 20m using two feeds (01 & 02 connectors)	CUTTING LENGTH	100mm
BEAM ANGLE	160°	HOUSING	UV & flame resistant white PVC
SOURCE LIFE	50,000 hours	MOUNTING	Profile / clips available <i>SEE PAGE 3.</i>
WARRANTY	3 years	CONTROL	Dimmable by PWM signal



NEON EDGE | WHITE | PVC | CONNECTIONS

Neon products are IP rated based on the fitted connections (power feed / end caps).

Can be fitted on-site or pre-fitted by Bright Light.

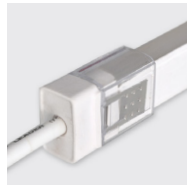
SLEEVE CONNECTIONS | IP40



TOP END FEED CONNECTOR SUPPLIED AS 1M CABLE

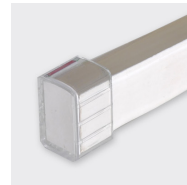
INSTALLATION WITH DOUBLE POWER FEED:
FEED 01 + FEED 02

CONNECTOR TOLERANCE +/-0.5MM



TOP END FEED

01 02



END CAP



INLINE
CONNECTOR



300MM FLEXIBLE
CONNECTOR

WHITE

BL-LS-4011

BL-LS-4012

BL-LS-4002

BL-LS-4010

BL-LS-4013

SCREW CONNECTIONS | IP65



NOT AVAILABLE FOR DOUBLE POWER FEED

TOP END FEED CONNECTOR SUPPLIED AS 1M CABLE
CONNECTOR TOLERANCE +/-0.5MM



TOP END FEED



END CAP

WHITE

BL-LS-4008

BL-LS-4001

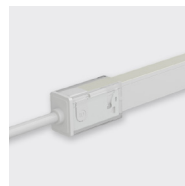
SNAP CONNECTIONS | IP67



TOP END FEED CONNECTOR SUPPLIED AS 1M CABLE

INSTALLATION WITH DOUBLE POWER FEED:
FEED 01 + FEED 02

MUST BE FITTED CORRECTLY FOR IP RATING



TOP END FEED

01 02



END CAP

01 02



300MM FLEXIBLE
CONNECTOR

WHITE

BL-LS-4014

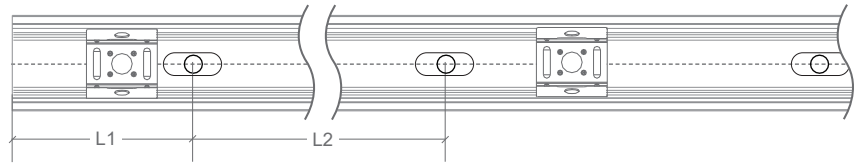
BL-LS-4015

BL-LS-4026

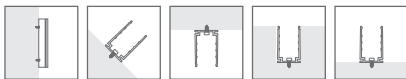
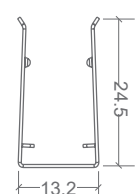
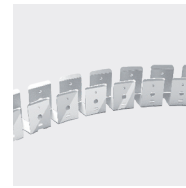
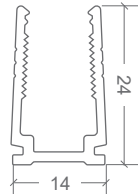
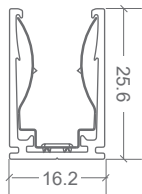
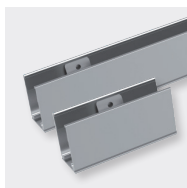
BL-LS-4027

BL-LS-4016

NEON EDGE | MOUNTING ACCESSORIES

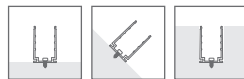


CODE	ACCESSORY	L1	L2	HOLE DIMENSIONS	HOLE NUMBER	CLIP NUMBER
BL-LS-4003	SELF-LOCKING ALUMINIUM PROFILE 2M	100mm	200mm	4 × 10mm	10	9
BL-LS-4004	SELF-LOCKING ALUMINIUM MOUNTING CLIP 35MM	5mm	25mm	4 × 10mm	2	1
BL-LS-4005	PLASTIC PROFILE 2M	100mm	200mm	Ø3.5mm	10	-
BL-LS-4006	PLASTIC PROFILE 1M	100mm	200mm	Ø3.5mm	5	-
BL-LS-4028	BENDABLE STAINLESS STEEL PROFILE 890MM MULTIPLE FIXING LOCATIONS	-	-	-	-	-

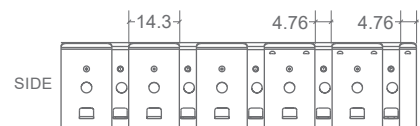


SELF-LOCKING ALUMINIUM PROFILE 2M / MOUNTING CLIP

Not recommend for underwater use



PLASTIC PROFILE



BENDABLE STAINLESS STEEL PROFILE 890MM