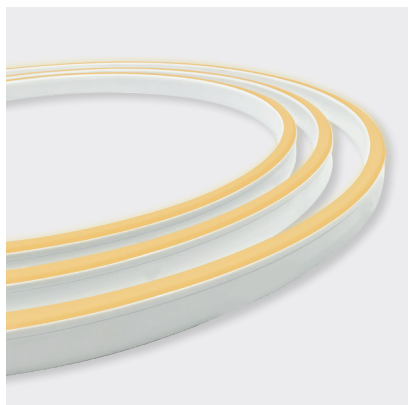




NEON EDGE | TUNEABLE WHITE | PVC



| COLOUR | CODE | COLOUR | LUMENS | CRI |
|-----------------------|------------|-------------|----------|-----|
| 2500 - 5000K TUNEABLE | BL-LS-4400 | 2460K ±120K | ≥110lm/m | ≥80 |
| | | 5000K ±285K | ≥110lm/m | |

ELECTRICAL & OPTICAL DATA VARIANCE +/- 10%
SOLD BY THE METRE
IES FILES AVAILABLE

With the introduction of our indent range of Silicone encapsulated Neon LED ribbon, our local, end of line PVC stock is available with 3 year warranty using local connectors.

Neon Edge is a sleek W11.5 × H21mm model perfect for cove lighting, handrails, or architectural features in exterior and interior applications.

Stock quantities vary - Talk to our team.
For more options consider our indent silicone Neon range - lead times apply.

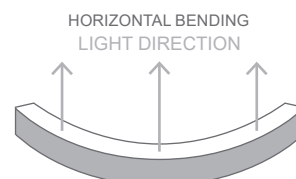
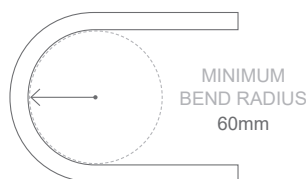
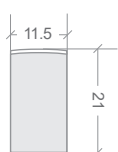
APPLICATIONS

- Ideal for applications where colour temperature adjustment is required
- Cove lighting, handrails, or toekicks
- Architectural features
- Exterior or interior installations

FEATURES

- Suitable for use around salt or chlorinated water

| | | | |
|-------------------------|---|---------------------|---|
| LED WATTS | 12W/m | MINIMUM BEND RADIUS | 60mm |
| INPUT VOLTS | 24V DC constant voltage | BEND DIRECTION | Horizontal bending |
| OPERATING TEMP. | -20°C ~ +45°C | DIMENSIONS | W11.5 × H21mm |
| MAX. RUN PER POWER FEED | 10m using one feed 20m using two feeds (01 & 02 connectors) | INGRESS PROTECTION | Up to IP67 Protection established by use of connection type SEE PAGE 2. |
| BEAM ANGLE | 160° | CUTTING LENGTH | 83.3mm |
| SOURCE LIFE | 50,000 hours | HOUSING | UV & flame resistant white PVC |
| WARRANTY | 3 years | MOUNTING | Profile / clips available SEE PAGE 3. |
| | | CONTROL | Requires 2-channel controller |



NEON EDGE | TUNEABLE WHITE | PVC | CONNECTIONS

Neon products are IP rated based on the fitted connections (power feed / end caps).

Can be fitted on-site or pre-fitted by Bright Light.

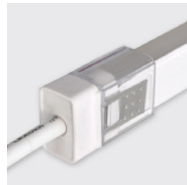
SLEEVE CONNECTIONS | IP40



TOP END FEED CONNECTOR SUPPLIED AS 1M CABLE

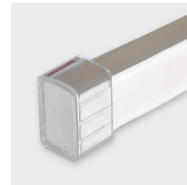
INSTALLATION WITH DOUBLE POWER FEED:
FEED 01 + FEED 02

CONNECTOR TOLERANCE +/-0.5MM



TOP END FEED

01 02



END CAP



INLINE CONNECTOR



300MM FLEXIBLE CONNECTOR

TUNEABLE WHITE

BL-LS-4405

BL-LS-4406

BL-LS-4002

BL-LS-4404

BL-LS-4407

SCREW CONNECTIONS | IP65



TOP END FEED CONNECTOR SUPPLIED AS 1M CABLE

INSTALLATION WITH DOUBLE POWER FEED:
FEED 01 + FEED 02

CONNECTOR TOLERANCE +/-0.5MM



TOP END FEED

01 02



END CAP



300MM FLEXIBLE CONNECTOR

TUNEABLE WHITE

BL-LS-4401

BL-LS-4402

BL-LS-4001

BL-LS-4403

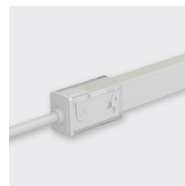
SNAP CONNECTIONS | IP67



TOP END FEED CONNECTOR SUPPLIED AS 1M CABLE

INSTALLATION WITH DOUBLE POWER FEED:
FEED 01 + FEED 02

MUST BE FITTED CORRECTLY FOR IP RATING



TOP END FEED

01 02



END CAP

01 02



300MM FLEXIBLE CONNECTOR

TUNEABLE WHITE

BL-LS-4017

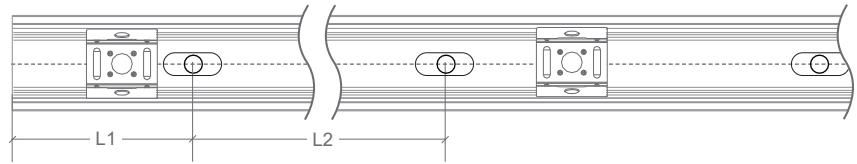
BL-LS-4018

BL-LS-4026

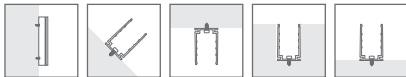
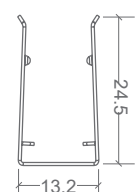
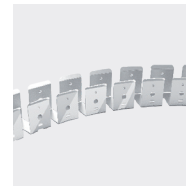
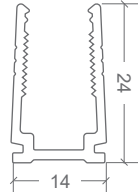
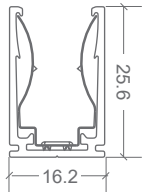
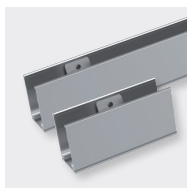
BL-LS-4027

BL-LS-4019

NEON EDGE | MOUNTING ACCESSORIES

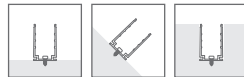


| CODE | ACCESSORY | L1 | L2 | HOLE DIMENSIONS | HOLE NUMBER | CLIP NUMBER |
|------------|---|-------|-------|-----------------|-------------|-------------|
| BL-LS-4003 | SELF-LOCKING ALUMINIUM PROFILE 2M | 100mm | 200mm | 4 × 10mm | 10 | 9 |
| BL-LS-4004 | SELF-LOCKING ALUMINIUM MOUNTING CLIP 35MM | 5mm | 25mm | 4 × 10mm | 2 | 1 |
| BL-LS-4005 | PLASTIC PROFILE 2M | 100mm | 200mm | Ø3.5mm | 10 | - |
| BL-LS-4006 | PLASTIC PROFILE 1M | 100mm | 200mm | Ø3.5mm | 5 | - |
| BL-LS-4028 | BENDABLE STAINLESS STEEL PROFILE 890MM MULTIPLE FIXING LOCATIONS | - | - | - | - | - |

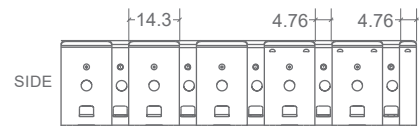


SELF-LOCKING ALUMINIUM PROFILE 2M / MOUNTING CLIP

Not recommend for underwater use



PLASTIC PROFILE



BENDABLE STAINLESS STEEL PROFILE 890MM