



## NEON EDGE | RGB CHASING | SILICONE



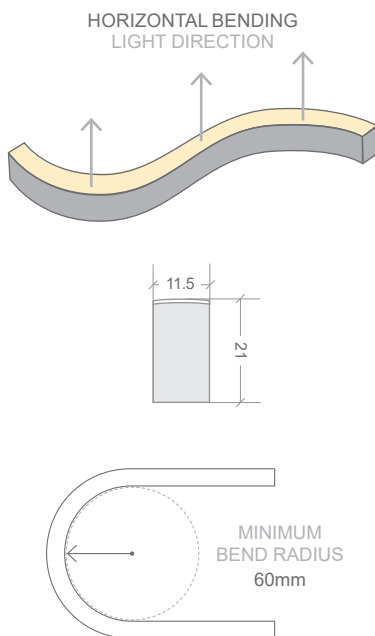
RECESSED INTO KORU SCULPTURE

Neon is a broad range of silicone encapsulated LED ribbons with a variety of light emissions and casings that closely reference glass neon tube.

Neon Edge is a sleek W11.5 × H21mm model.

RGB (Red, Green, Blue) ribbon provides a rainbow of colour options from hot pinks to vivid blues and anywhere in-between. RGB Chasing gives you dynamic control, pixel segments are independently addressable, allowing chasing & blending movement of colours.

**Neon is made to order, check with our team for lead times.**



### \*STATIC VS DYNAMIC OPERATING

This product has a maximum wattage of 12W/m which is reached when all colours R+G+B are used simultaneously to create a white tone, with 3 × colour channels using approximately 4W/m each. Using Neon at this maximum load is called Static full loading (all colour channels, all powered continuously).

When R, G or B channels are used individually or blended to make colour mixes eg blue or purple (excluding white tones) the wattage used is below the maximum load and is considered dynamic operating. This also applies when the colours are constantly changing (including if a white tone is created but only used in a chasing, flashing or fading capacity).

*When the maximum wattage of the product is reached, lengths longer than recommended may experience power loss, reduced luminosity & increased heat which can shorten the life of the product.*

**If unsure about the products intended usage, future proof by choosing the static full loading lengths.**

### APPLICATIONS

- Dynamic colour installations that chase, blend, flow, flash, skip, or fade
- Cove lighting, handrails, or toe-kicks
- Architectural features
- Exterior or interior installations
- Swimming or feature pools

### FEATURES

- UV & flame resistant

CODE	COLOUR	LUMENS
BL-LS-4200S-RGBC	R 615–625nm	≥30lm/m
	G 520–530nm	≥75lm/m
	B 465–475nm	≥15lm/m

*ELECTRICAL & OPTICAL DATA VARIANCE +/- 10%. SOLD BY THE METRE. IES FILES AVAILABLE. WHITE, TUNEABLE WHITE & RGBW CHASING OPTIONS AVAILABLE.*

POWER & TEMP		PHYSICAL PARAMETERS & CONTROL	
LED WATTS	12W/m	MINIMUM BEND RADIUS	60mm
INPUT VOLTS	24V DC Constant voltage <i>Onboard constant current</i>	BEND DIRECTION	Horizontal bending
OPERATING TEMP. (ENVIRONMENT)	-40°C ~ +55°C	DIMENSIONS	W11.5 × H21mm
MAX. RUN PER POWER FEED	<b>Static full loading*</b> 10m using one feed 20m using two feeds <b>Dynamic operating*</b> 15m using one feed 30m using two feeds	INGRESS PROTECTION	IP67 or IP68 Protection established by use of connectors. <i>SEE PAGE 2.</i>
LIGHT & LIFE		CUTTING LENGTH	125mm
BEAM ANGLE	160°	HOUSING	UV & flame resistant white silicone with opal diffuser
LED PER METRE	56	MOUNTING	Profile / clips available <i>SEE PAGE 3.</i>
PIXELS PER METRE	8	CONTROL	Requires SPI controller or can be controlled by DMX controller via SPI decoder.
SOURCE LIFE	50,000 hours		
WARRANTY	5 years		

## NEON EDGE | RGB CHASING | CONNECTIONS

Neon products are IP rated based on the fitted connections (power feed / end caps).

Bright Light recommend using Slimline injection moulding for the best result, a clean finish and IP68 rating. These are fitted at factory during the production process and can not be altered once produced - **ensure all lengths are double-checked before ordering.**

If on-site cutting is required (due to lengths being unknown in advance or site design alterations), Snap connector fittings can be used instead. Snap Connectors can be fitted on-site and offer an IP67 rating (provided all installation instructions are followed correctly).

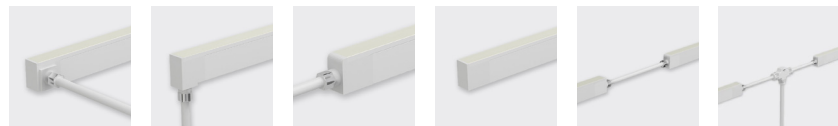
Power feed connectors are priced & supplied with 1metre cable as standard. Please specific at time of quoting if alternate lengths are required.

### SLIMLINE INJECTION MOULDING CONNECTIONS | IP68

**RECOMMENDED**



REQUIRES FITTING AT FACTORY.  
EXACT LENGTH REQUIRED BEFORE PRODUCTION



SIDE FEED      BOTTOM FEED      TOP END FEED      END CAP      300MM FLEXIBLE CONNECTOR      T FEED

### SNAP CONNECTIONS | IP67

**ON-SITE FITTING**



FITTING ON-SITE - WHERE LENGTHS ARE UNKNOWN IN ADVANCE.  
MUST BE FITTED CORRECTLY FOR IP RATING

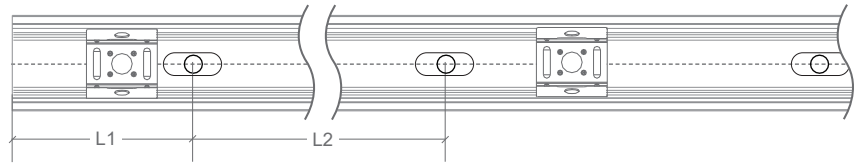


TOP END FEED      END CAP      300MM FLEXIBLE CONNECTOR

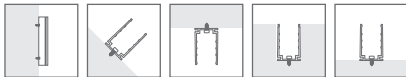
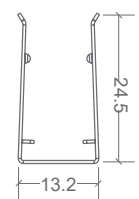
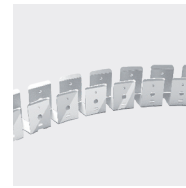
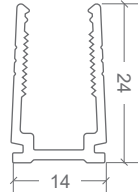
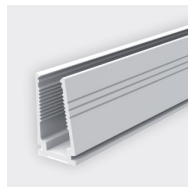
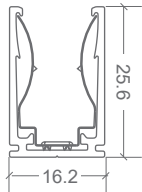
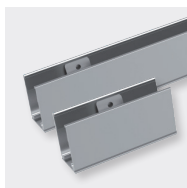
RGB CHASING

01	02	01	02	
BL-LS-4023	BL-LS-4024	BL-LS-4026	BL-LS-4027	BL-LS-4025

## NEON EDGE | MOUNTING ACCESSORIES

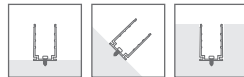


CODE	ACCESSORY	L1	L2	HOLE DIMENSIONS	HOLE NUMBER	CLIP NUMBER
BL-LS-4003	SELF-LOCKING ALUMINIUM V2 PROFILE 2M	100mm	200mm	4 × 10mm	10	9
BL-LS-4004	SELF-LOCKING ALUMINIUM V2 MOUNTING CLIP 35MM	5mm	25mm	4 × 10mm	2	1
BL-LS-4005	PLASTIC PROFILE 2M	100mm	200mm	Ø3.5mm	10	-
BL-LS-4006	PLASTIC PROFILE 1M	100mm	200mm	Ø3.5mm	5	-
BL-LS-4028	BENDABLE STAINLESS STEEL PROFILE 890MM MULTIPLE FIXING LOCATIONS	-	-	-	-	-

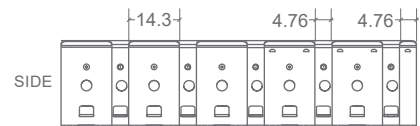


**SELF-LOCKING ALUMINIUM  
PROFILE 2M / MOUNTING CLIP**

*Not recommend for underwater use*



**PLASTIC PROFILE**



**BENDABLE STAINLESS STEEL  
PROFILE 890MM**