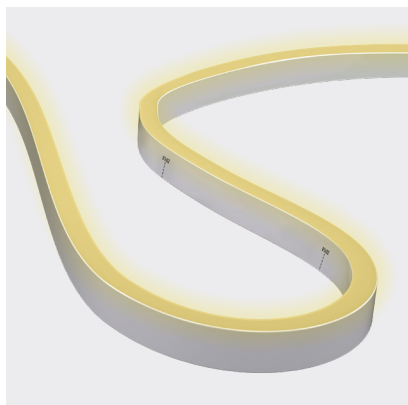




NEON EDGE | DIM TO WARM | SILICONE



Neon is a broad range of silicone encapsulated LED ribbons with a variety of light emissions and casings that closely reference glass neon tube.

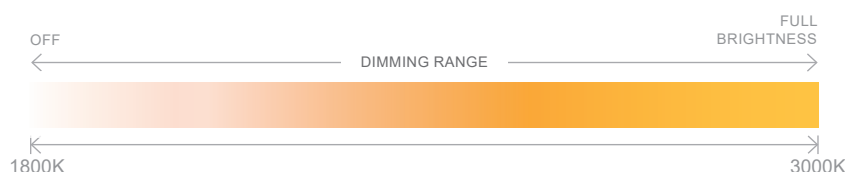
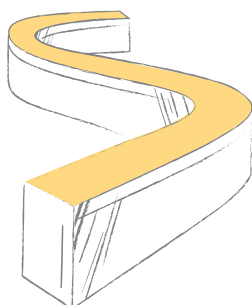
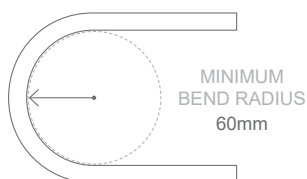
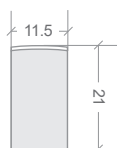
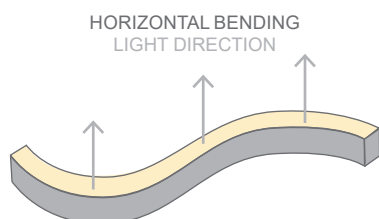
Neon Edge is a sleek W11.5 × H21mm model perfect for architectural features in exterior and interior applications.

Dim to Warm allows the lighting to warm up as the light is dimmed, creating a cozy feel that is perfect for evenings. It provides 3000K lighting at full brightness, slowly reducing to a warm 1800K before dimming completely.

Neon is made to order, check with our team for lead times.

APPLICATIONS

- Cove lighting, handrails, or toe kicks
- Architectural features
- Exterior or interior installations
- Feature pools



CODE	COLOUR	LUMENS
BL-LS-4030S-DTW	EXTRA WARM WHITE 1800K +/- 100K	2lm/m
	WARM WHITE 3000K +/- 220K	340lm/m

ELECTRICAL & OPTICAL DATA VARIANCE +/- 10%. SOLD BY THE METRE. IES FILES AVAILABLE.

POWER & TEMP

LED WATTS	12W/m
INPUT VOLTS	24V DC Constant voltage Onboard constant current
OPERATING TEMP. (ENVIRONMENT)	-40°C ~ +55°C
MAX. RUN PER POWER FEED	15m using one feed 30m using two feeds

LIGHT & LIFE

CRI	≥80 (1800K) ≥90 (3000K)
BEAM ANGLE	160°
LED PER METRE	144
SOURCE LIFE	50,000 hours
WARRANTY	5 years

PHYSICAL PARAMETERS & CONTROL

MINIMUM BEND RADIUS	60mm
BEND DIRECTION	Horizontal bending
DIMENSIONS	W11.5 × H21mm
INGRESS PROTECTION	IP67 or IP68 Protection established by use of connectors. Dimensions of connectors shown on installation guide SEE PAGE 2.
CUTTING LENGTH	83.3mm
HOUSING	UV & flame resistant white silicone with opal diffuser
MOUNTING	Profile / clips available SEE PAGE 3.
CONTROL	Dimmable by PWM signal

NEON EDGE | DIM TO WARM | CONNECTIONS

Neon products are IP rated based on the fitted connections (power feed / end caps).

Bright Light recommend using Slimline injection moulding for the best result, a clean finish and IP68 rating. These are fitted at factory during the production process and can not be altered once produced - **ensure all lengths are double-checked before ordering.**

If on-site cutting is required (due to lengths being unknown in advance or site design alterations), Snap connector fittings can be used instead. Snap Connectors can be fitted on-site and offer an IP67 rating (provided all installation instructions are followed correctly).

Power feed connectors are priced & supplied with 1metre cable as standard. Please specific at time of quoting if alternate lengths are required.

SLIMLINE INJECTION MOULDING CONNECTIONS | IP68

RECOMMENDED



REQUIRES FITTING AT FACTORY.
EXACT LENGTH REQUIRED BEFORE PRODUCTION



SIDE FEED



BOTTOM FEED



TOP END FEED



END CAP



300MM FLEXIBLE CONNECTOR



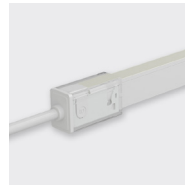
T FEED

SNAP CONNECTIONS | IP67

ON-SITE FITTING

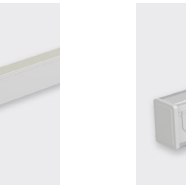


FITTING ON-SITE - WHERE LENGTHS ARE UNKNOWN IN ADVANCE.
MUST BE FITTED CORRECTLY FOR IP RATING

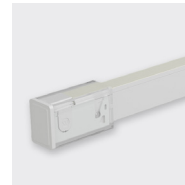


TOP END FEED

01

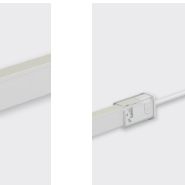


02



END CAP

01



02



300MM FLEXIBLE CONNECTOR

BL-LS-4016

WHITE / DIM TO WARM

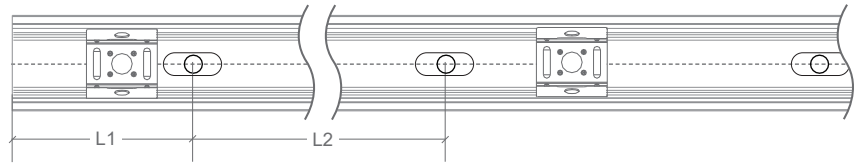
BL-LS-4014

BL-LS-4015

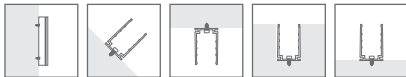
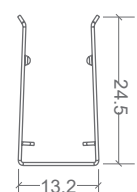
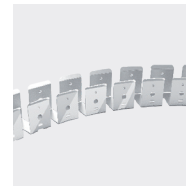
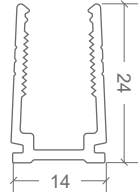
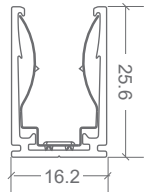
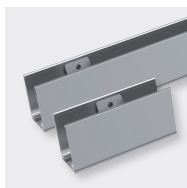
BL-LS-4026

BL-LS-4027

NEON EDGE | MOUNTING ACCESSORIES

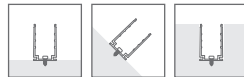


CODE	ACCESSORY	L1	L2	HOLE DIMENSIONS	HOLE NUMBER	CLIP NUMBER
BL-LS-4003	SELF-LOCKING ALUMINIUM V2 PROFILE 2M	100mm	200mm	4 × 10mm	10	9
BL-LS-4004	SELF-LOCKING ALUMINIUM V2 MOUNTING CLIP 35MM	5mm	25mm	4 × 10mm	2	1
BL-LS-4005	PLASTIC PROFILE 2M	100mm	200mm	Ø3.5mm	10	-
BL-LS-4006	PLASTIC PROFILE 1M	100mm	200mm	Ø3.5mm	5	-
BL-LS-4028	BENDABLE STAINLESS STEEL PROFILE 890MM MULTIPLE FIXING LOCATIONS	-	-	-	-	-

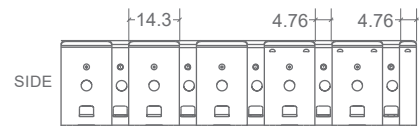


**SELF-LOCKING ALUMINIUM
PROFILE 2M / MOUNTING CLIP**

Not recommend for underwater use



PLASTIC PROFILE



**BENDABLE STAINLESS STEEL
PROFILE 890MM**