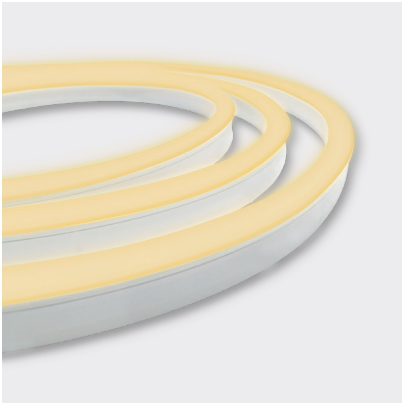


EX-STOCK
PRODUCT

NEON CLASSIC | WHITE | PVC



With the introduction of our indent range of Silicone encapsulated Neon LED ribbon, our local, end of line PVC stock is available with 3 year warranty using local connectors.

Neon Classic is a perfect replacement for traditional glass neon tube with dimensions of W16.5 x H29mm (W11.5mm at the base).

Stock quantities vary - Talk to our team.

For more options consider our indent silicone Neon range - lead times apply.

APPLICATIONS

- Signage & cove lighting
- Architectural features
- Exterior or interior installations

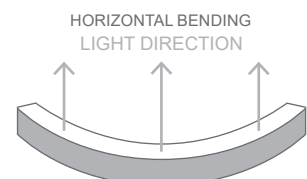
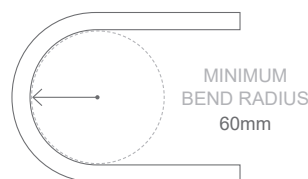
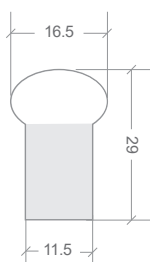
FEATURES

- A perfect replacement for traditional glass neon tube
- UV & flame resistant
- Suitable for use around salt or chlorinated water

COLOUR	CODE	LUMENS	GRI
WARM WHITE 3000K +/- 175K	BL-LS-4500-30	≥340lm/m	≥70
NATURAL WHITE 4000K +/- 275K	BL-LS-4580-40	≥380lm/m	≥80
COOL WHITE 5000K +/- 300K	BL-LS-4500-50	≥380lm/m	≥70

ELECTRICAL & OPTICAL DATA VARIANCE +/- 10%
SOLD BY THE METRE
IES FILES AVAILABLE

LED WATTS	12W/m	MINIMUM BEND RADIUS	60mm
INPUT VOLTS	24V DC constant voltage	BEND DIRECTION	Horizontal bending
OPERATING TEMP.	-20°C ~ +45°C	DIMENSIONS	W16.5 x H29mm (W11.5mm at the base)
MAX. RUN PER POWER FEED	10m using one feed 20m using two feeds (01 & 02 connectors)	INGRESS PROTECTION	Up to IP67 Protection established by use of connection type SEE PAGE 2.
BEAM ANGLE	180°	CUTTING LENGTH	83.3mm
SOURCE LIFE	50,000 hours	HOUSING	UV & flame resistant white PVC
WARRANTY	3 years	MOUNTING	Profile / clips available SEE PAGE 3.
		CONTROL	Dimmable by PWM signal



NEON CLASSIC | WHITE | PVC | CONNECTIONS

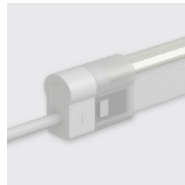
Neon products are IP rated based on the fitted connections (power feed / end caps).

Can be fitted on-site or pre-fitted by Bright Light.

SLEEVE CONNECTIONS | IP40

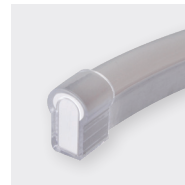


INSTALLATION WITH DOUBLE POWER FEED:
FEED 01 + FEED 02
CONNECTOR TOLERANCE +/-0.5MM



TOP END FEED

01 02



END CAP



INLINE
CONNECTOR



300MM FLEXIBLE
CONNECTOR

WHITE / SINGLE COLOUR

BL-LS-4511

BL-LS-4512

BL-LS-4502

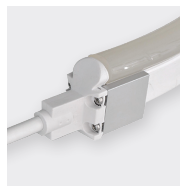
BL-LS-4010

BL-LS-4513

SCREW CONNECTIONS | IP65



NOT AVAILABLE FOR DOUBLE POWER FEED
CONNECTOR TOLERANCE +/-0.5MM



TOP END FEED



END CAP



300MM FLEXIBLE
CONNECTOR

WHITE / SINGLE COLOUR

BL-LS-4508

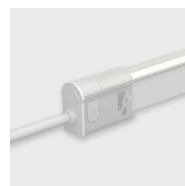
BL-LS-4501

BL-LS-4509

SNAP CONNECTIONS | IP67



FITTING ON-SITE - WHERE LENGTHS ARE UNKNOWN IN ADVANCE.
MUST BE FITTED CORRECTLY FOR IP RATING



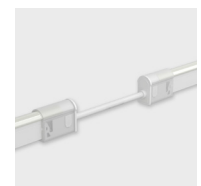
TOP END FEED

01 02



END CAP

01 02



300MM FLEXIBLE
CONNECTOR

WHITE

BL-LS-4514

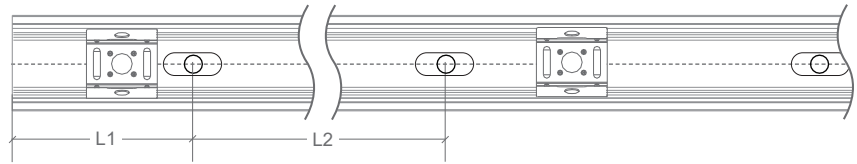
BL-LS-4515

BL-LS-4526

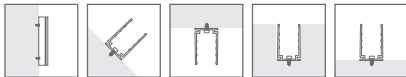
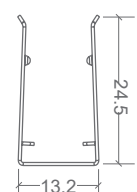
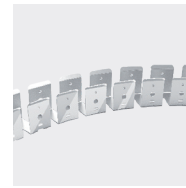
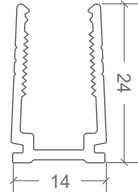
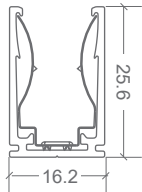
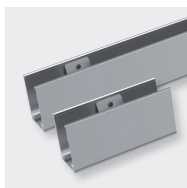
BL-LS-4527

BL-LS-4516

NEON CLASSIC | MOUNTING ACCESSORIES

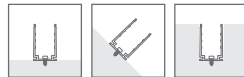


CODE	ACCESSORY	L1	L2	HOLE DIMENSIONS	HOLE NUMBER	CLIP NUMBER
BL-LS-4003	SELF-LOCKING ALUMINIUM PROFILE 2M	100mm	200mm	4 × 10mm	10	9
BL-LS-4004	SELF-LOCKING ALUMINIUM MOUNTING CLIP 35MM	5mm	25mm	4 × 10mm	2	1
BL-LS-4005	PLASTIC PROFILE 2M	100mm	200mm	Ø3.5mm	10	-
BL-LS-4006	PLASTIC PROFILE 1M	100mm	200mm	Ø3.5mm	5	-
BL-LS-4028	BENDABLE STAINLESS STEEL PROFILE 890MM MULTIPLE FIXING LOCATIONS	-	-	-	-	-

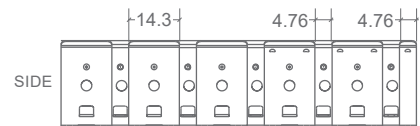


SELF-LOCKING ALUMINIUM PROFILE 2M / MOUNTING CLIP

Not recommend for underwater use



PLASTIC PROFILE



BENDABLE STAINLESS STEEL PROFILE 890MM