

EX-STOCK  
PRODUCT

## NEON CLASSIC | SINGLE COLOUR JACKET | PVC



COLOUR	CODE	LED WATTS	LUMENS	CUTTING LENGTH
RED 615–625nm	BL-LS-4530-R	8W/m	≥80lm/m	125mm
YELLOW 580nm	BL-LS-4530-Y	12W/m	≥260lm/m	83.3mm
RED 620–630nm	BL-LS-4500-R	7.2W/m	≥100lm/m	167mm
GREEN 520–530nm	BL-LS-4500-G	12W/m	≥180lm/m	100mm
BLUE 465–475nm	BL-LS-4500-B	12W/m	≥25lm/m	100mm
YELLOW 587nm	BL-LS-4500-Y	12W/m	≥260lm/m	100mm

ELECTRICAL & OPTICAL DATA VARIANCE +/- 10%. SOLD BY THE METRE. IES FILES AVAILABLE

With the introduction of our indent range of Silicone encapsulated Neon LED ribbon, our local, end of line PVC stock is available with 3 year warranty using local connectors.

Neon Classic is a perfect replacement for traditional glass neon tube with dimensions of W16.5 × H29mm (W11.5mm at the base).

Stock quantities vary - Talk to our team.

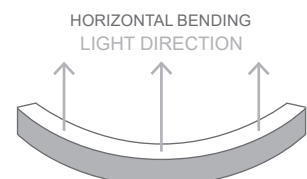
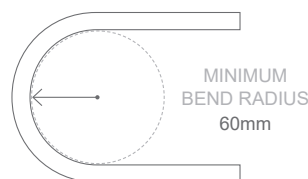
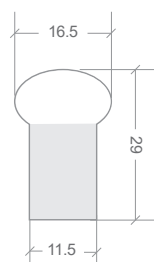
### APPLICATIONS

- Creative colour installations
- Signage & cove lighting
- Architectural features
- Exterior or interior installations

### FEATURES

- A perfect replacement for traditional glass neon tube
- UV & flame resistant
- Suitable for use around salt or chlorinated water

INPUT VOLTS	24V DC constant voltage	MINIMUM BEND RADIUS	60mm
OPERATING TEMP.	-20°C ~ +45°C	BEND DIRECTION	Horizontal bending
MAX. RUN PER POWER FEED	10m (G, B, Y) or 15m (R) using one feed 20m (G, B, Y) or 30m (R) using two feeds	DIMENSIONS	W16.5 × H29mm (W11.5mm at the base)
		INGRESS PROTECTION	Up to IP67 Protection established by use of connection type SEE PAGE 2.
BEAM ANGLE	180°	CUTTING LENGTH	83.3mm
SOURCE LIFE	50,000 hours	HOUSING	UV & flame resistant coloured PVC (R, G, B, Y)
WARRANTY	3 years	MOUNTING	Profile / clips available SEE PAGE 3.
		CONTROL	Dimmable by PWM signal



## NEON CLASSIC | WHITE | PVC | CONNECTIONS

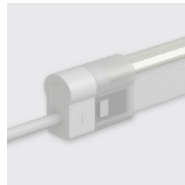
Neon products are IP rated based on the fitted connections (power feed / end caps).

Can be fitted on-site or pre-fitted by Bright Light.

### SLEEVE CONNECTIONS | IP40

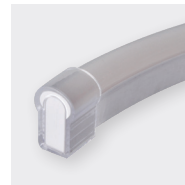


**INSTALLATION WITH DOUBLE POWER FEED:**  
FEED 01 + FEED 02  
CONNECTOR TOLERANCE +/-0.5MM



TOP END FEED

01      02



END CAP



INLINE  
CONNECTOR



300MM FLEXIBLE  
CONNECTOR

WHITE / SINGLE COLOUR

BL-LS-4511

BL-LS-4512

BL-LS-4502

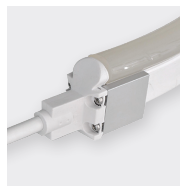
BL-LS-4010

BL-LS-4513

### SCREW CONNECTIONS | IP65



**NOT AVAILABLE FOR DOUBLE POWER FEED**  
CONNECTOR TOLERANCE +/-0.5MM



TOP END FEED



END CAP



300MM FLEXIBLE  
CONNECTOR

WHITE / SINGLE COLOUR

BL-LS-4508

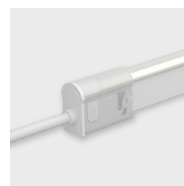
BL-LS-4501

BL-LS-4509

### SNAP CONNECTIONS | IP67



**FITTING ON-SITE - WHERE LENGTHS ARE UNKNOWN IN ADVANCE.**  
MUST BE FITTED CORRECTLY FOR IP RATING



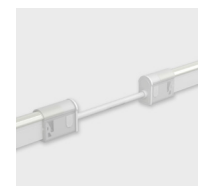
TOP END FEED

01      02



END CAP

01      02



300MM FLEXIBLE  
CONNECTOR

WHITE

BL-LS-4514

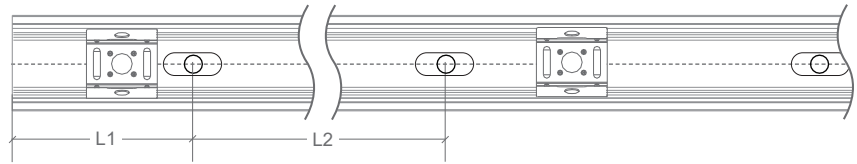
BL-LS-4515

BL-LS-4526

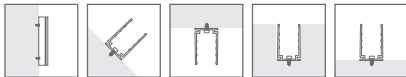
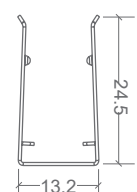
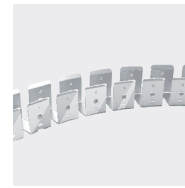
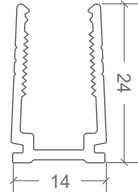
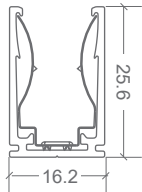
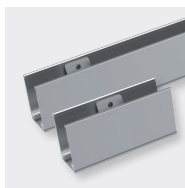
BL-LS-4527

BL-LS-4516

## NEON CLASSIC | MOUNTING ACCESSORIES

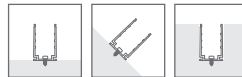


CODE	ACCESSORY	L1	L2	HOLE DIMENSIONS	HOLE NUMBER	CLIP NUMBER
BL-LS-4003	SELF-LOCKING ALUMINIUM PROFILE 2M	100mm	200mm	4 × 10mm	10	9
BL-LS-4004	SELF-LOCKING ALUMINIUM MOUNTING CLIP 35MM	5mm	25mm	4 × 10mm	2	1
BL-LS-4005	PLASTIC PROFILE 2M	100mm	200mm	Ø3.5mm	10	-
BL-LS-4006	PLASTIC PROFILE 1M	100mm	200mm	Ø3.5mm	5	-
BL-LS-4028	BENDABLE STAINLESS STEEL PROFILE 890MM MULTIPLE FIXING LOCATIONS	-	-	-	-	-

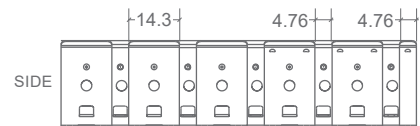


**SELF-LOCKING ALUMINIUM  
PROFILE 2M / MOUNTING CLIP**

*Not recommend for underwater use*



**PLASTIC PROFILE**



**BENDABLE STAINLESS STEEL  
PROFILE 890MM**