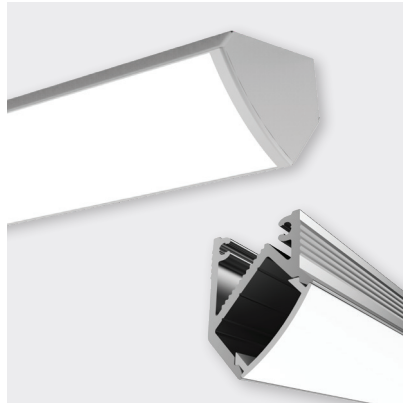
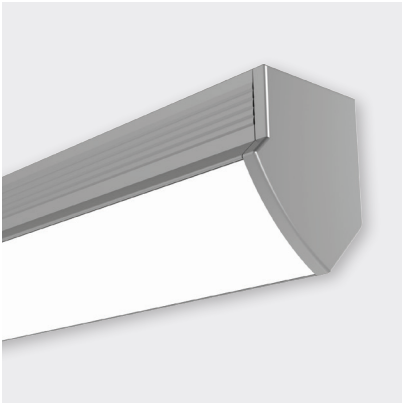
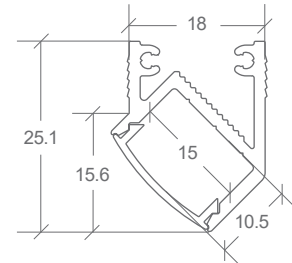


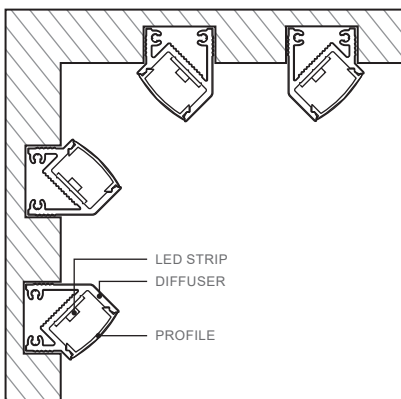
## LOWLINE 03



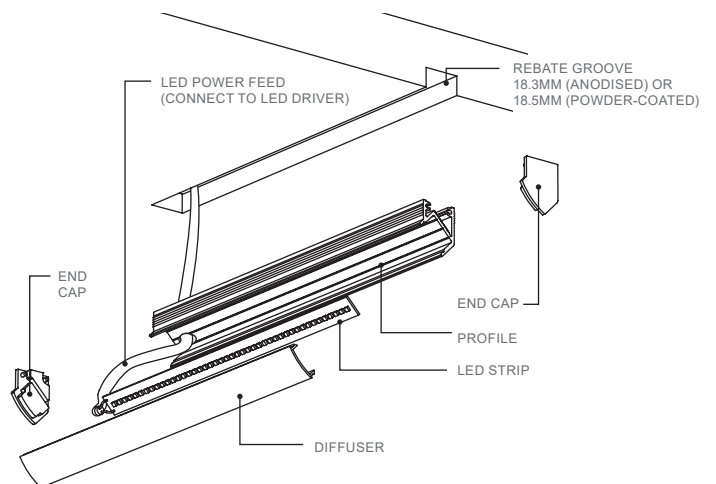
### DIMENSIONS



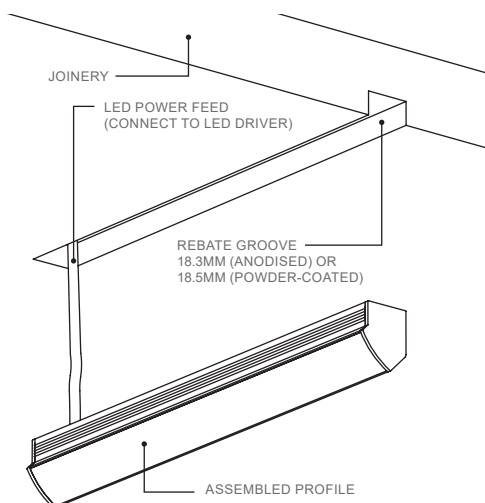
### MOUNTING OPTIONS



### 2. PROFILE AND LED STRIP INSTALLATION



### 3. PROFILE FRICTION-FIT INSTALLATION



1. IMPORTANT - Before mounting LED strip, clean profile using an alcohol based cleaner.
2. Router rebate groove of width 18.3mm (anodised) or 18.5mm (black or white powder-coat). *Bright Light recommends testing first to ensure a good fit.*
3. Drill preferred cable entry hole in joinery - application dependant.
4. Drill cable entry hole in profile for LED power feed. Thread LED power feed through hole, ensuring it is protected from sharp profile edges e.g. heatshrink or similar.
5. Remove 3M paper from LED strip to expose sticky surface. Use the groves at the back of the profile as a guide to insert the LED strip.
6. Attach diffuser to profile by clicking in securely.
7. Secure end caps by pressing into place (*may require a touch of silicone*).

1. Connect LED power feed to LED driver.
2. Slot assembled profile into rebate groove and press firmly until flush with surface. Friction-fit edging will ensure profile is held securely.