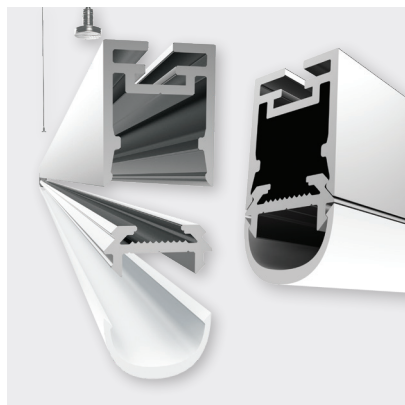
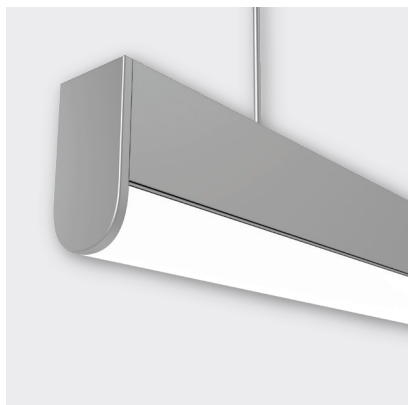




TECHLINE 06



FEATURES

- Curved frosted acrylic diffuser
- Anodised aluminium, black or white powder-coat
- 2-Part Profile Mounting System
- Task, wall, ceiling, or mirror lighting
- Suspend or surface mount

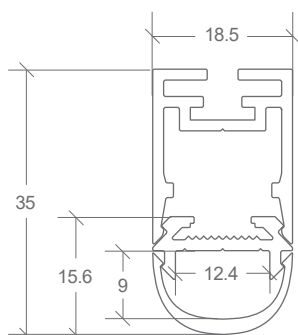
DIFFUSER	FINISH	CODE
OPAL	ANODISED	BL-LP-T06AO-XX
	BLACK	BL-LP-T06BO-XX
	WHITE	BL-LP-T06WO-XX

XX = (2M) 2 METRE OR (4M) 4 METRE LENGTHS
NOT ALL FINISH COLOURS ARE EX. STOCK, LEAD TIMES MAY APPLY.

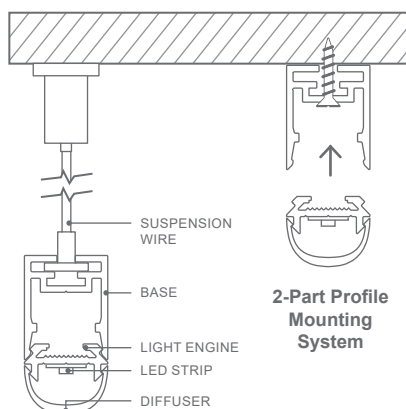
ACCESSORY	CODE
ALUMINIUM END CAP W18.5 x H35 x D2MM (3MM INSERT)	BL-LP-T06X-EC
JOINER STRAIGHT	BL-LP-J101S
JOINER 90° CORNER	BL-LP-J102C
JOINER 120° CORNER	BL-LP-J121C
JOINER VERTICAL TO HORIZONTAL	BL-LP-J103VH
CABLE BASE SURFACE MOUNT	BL-LP-S104X
CABLE BASE RECESSED	BL-LP-S105X
CABLE BASE MINI 38MM	BL-LP-S112X
SUSPENSION WIRE WITH BASE	BL-LP-S106X

END CAPS SOLD INDIVIDUALLY
X = (A) ANODISED, (B) BLACK, OR (W) WHITE

DIMENSIONS



INSTALLATION



ACCESSORIES



BL-LP-T06X-EC*

* A PAIR OF ALUMINIUM END CAPS ARE REQUIRED AS PART OF THE INSTALLATION

The Techline range **2-Part Profile Mounting System** allows for the pre-installation of LED ribbon prior to screw mounting base, then simply 'clip' assembled light engine in.