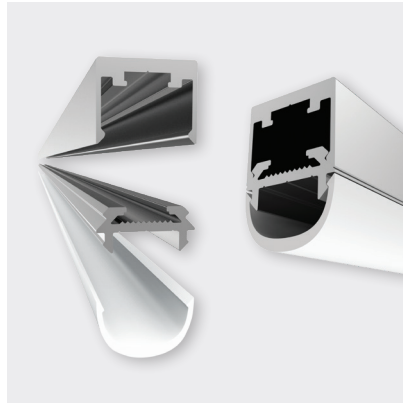




TECHLINE 03



FEATURES

- Curved frosted acrylic diffuser
- Anodised aluminium, black or white powder-coat
- 2-Part Profile Mounting System
- Task, wall, ceiling, or mirror lighting
- Surface mount

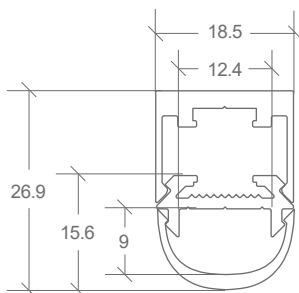
DIFFUSER	FINISH	CODE
OPAL	ANODISED	BL-LP-T03AO-XX
	BLACK	BL-LP-T03BO-XX
	WHITE	BL-LP-T03WO-XX

XX = (2M) 2 METRE OR (4M) 4 METRE LENGTHS
NOT ALL FINISH COLOURS ARE EX. STOCK, LEAD TIMES MAY APPLY.

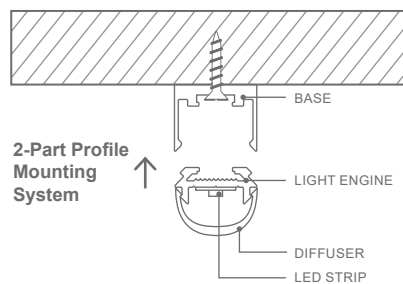
ACCESSORY	CODE
ALUMINIUM END CAP <i>W18.5 × H26.9 × D2MM (3MM INSERT)</i>	BL-LP-T03X-EC
JOINER STRAIGHT	BL-LP-J101S
JOINER 90° CORNER	BL-LP-J102C
JOINER 120° CORNER	BL-LP-J121C
JOINER VERTICAL TO HORIZONTAL	BL-LP-J103VH

END CAPS SOLD INDIVIDUALLY
X = (A) ANODISED, (B) BLACK, OR (W) WHITE

DIMENSIONS



INSTALLATION



The Techline range **2-Part Profile Mounting System** allows for the pre-installation of LED ribbon prior to screw mounting base, then simply 'clip' assembled light engine in.

ACCESSORIES



BL-LP-T03X-EC

* A PAIR OF ALUMINIUM END CAPS ARE REQUIRED AS PART OF THE INSTALLATION