



CRI 95+

R9 80+

## PROLINE | G3 IP65



CODE	WATTS	LENGTH	LUMENS
IR-PL-7G3-NW-808-IP	7W	808mm	700 lm
IR-PL-5G3-NW-868-IP	5.2W	868mm	520 lm
IR-PL-16G3-NW-868-IP-C	15.6W	868mm	1560 lm
IR-PL-7G3-NW-1168-IP	7W	1168mm	700 lm
IR-PL-21G3-NW-1168-IP-C	21W	1168mm	2100 lm
IR-PL-8G3-NW-1468-IP	8.8W	1468mm	880 lm
IR-PL-23G3-NW-1468-IP-C	23W	1468mm	2300 lm

INPUT VOLTS	24V DC Constant Voltage
OPERATING TEMP.	-30°C ~ +50°C
MAXIMUM RUN IN SERIES	3 × light bars

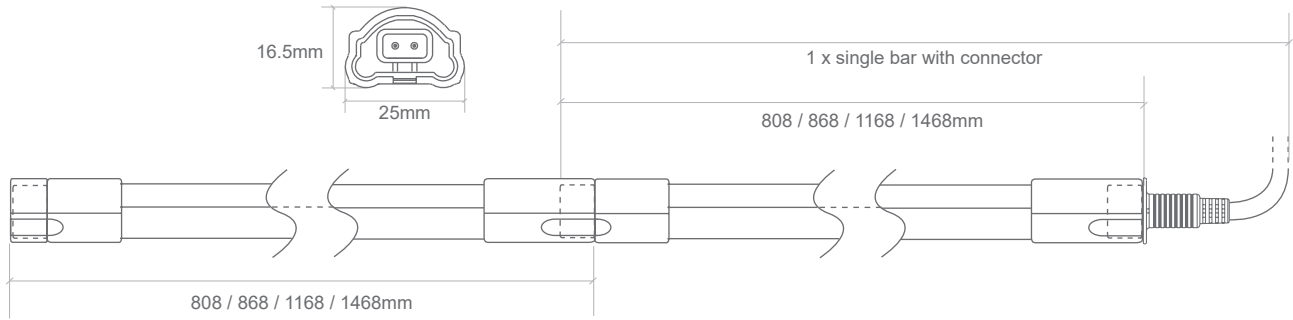
COLOUR	NATURAL WHITE 4000K
EFFICACY	100
CRI	95+
R9	80+
SDCM	2-step MacAdam

HOUSING	IP65 Aluminium profile with moulded end caps and power feeds
MOUNTING	3 × plastic mounting clips per light bar
INGRESS PROTECTION	IP65
B50 RATED LIFE	L85: 50,000 hrs L80: 67,000 hrs
WARRANTY	7 years

# BRIGHTLIGHT

## LED LIGHTING SOLUTIONS

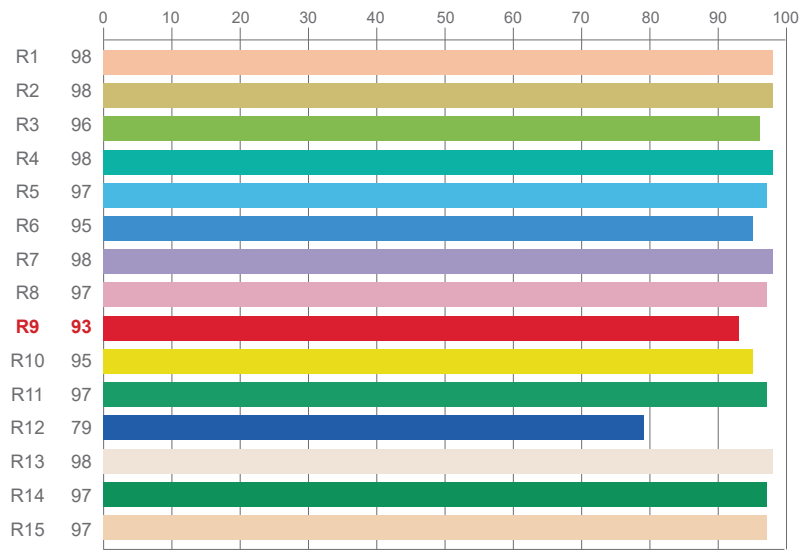
### DIMENSIONS



### CRI CHART

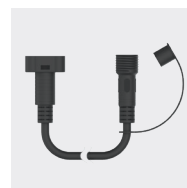
**CRI = 97.7 | R9 = 93.4**

AS TESTED.  
Performance data may vary +/- 10%

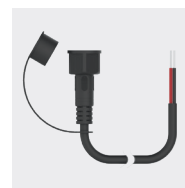


### ACCESSORIES

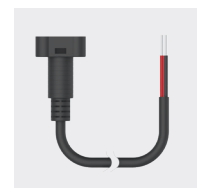
ACCESSORY	LENGTH	CODE
G3 CONNECTOR TO FEMALE IP67 CONNECTOR HARNESS	400mm	IR-PL-HNG301-400
MALE IP67 CONNECTOR HARNESS TO TIN-COATED WIRES	2800mm	IR-PL-HNG310-2800
G3 CONNECTOR TO TIN-COATED WIRES	1500mm 2000mm 2800mm	IR-PL-HNG309-1500 IR-PL-HNG309-2000 IR-PL-HNG309-2800
MALE G3 TO FEMALE G3 CONNECTOR	150mm	IR-PL-HNG307-150
G3 CONNECTOR HARNESS TO HSE MALE IP67 CONNECTOR	300mm	IR-PL-HNG313-300
G3 CONNECTOR TO DC 3.5 FEMALE	150mm	IR-PL-HNG315AG-150
PLASTIC MOUNTING CLIP		IR-PL-CLG3-PL
ADJUSTABLE G3 MOUNTING CLIP WHITE (REQUIRES PLASTIC MOUNTING CLIP)		BL-LP-AMCW



IR-PL-HNG301-400



IR-PL-HNG310-2800



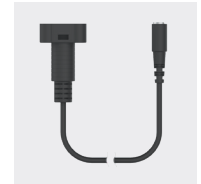
IR-PL-HNG309-XXXX



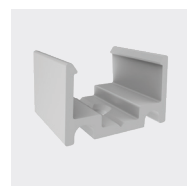
IR-PL-HNG307-150



IR-PL-HNG313-300



IR-PL-HNG315AG-150



IR-PL-CLG3-PL



BL-LP-AMCW

POWER SUPPLY USED WILL BE DEPENDANT ON CONFIGURATION